

# MagnaCleanse®

Advanced central heating  
system flushing

**NEW IMPROVED**  
*MagnaCleanse RapidFlush Filter*

**CORGI**  
**AWARDS**  
WINNER 2010  
Plumbing Manufacturer of the Year

System flush  
could NOW be  
achieved in  
**2 hours!**

**ADEY**

PROFESSIONAL HEATING SOLUTIONS

# MagnaCleanse®

## What is *MagnaCleanse*?

*MagnaCleanse*® has been developed by ADEY Professional Heating Solutions to deliver a fast and effective flushing process for central heating systems.

The process involves ADEY's proven and award winning *MagnaClean*® technology and requires the following components to carry out successfully:

- *MagnaCleanse* hose-to-valve connector (HTV)
- *MagnaClean* domestic filter
- *VibraClean*® radiator agitator
- *MagnaCleanse* RapidFlush Filter

In order to achieve the best protection for the boiler, it is important that the *MagnaCleanse* process is carried out with the *MagnaCleanse* HTV attached to the return pipe of the system.

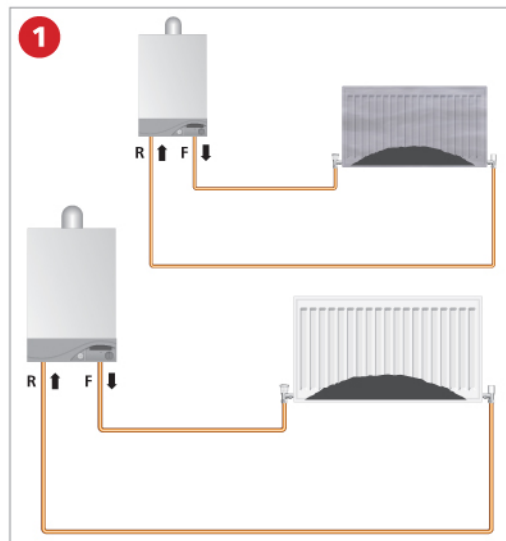
The following instructions are designed to assist engineers in the safe and effective installation and operation of the *MagnaCleanse* process. Any queries, please contact ADEY direct on **01242 546700**. Our Customer Care Team will be happy to assist.

Alternatively, visit our website at [www.adey.co.uk](http://www.adey.co.uk) for full details and a video demonstration.

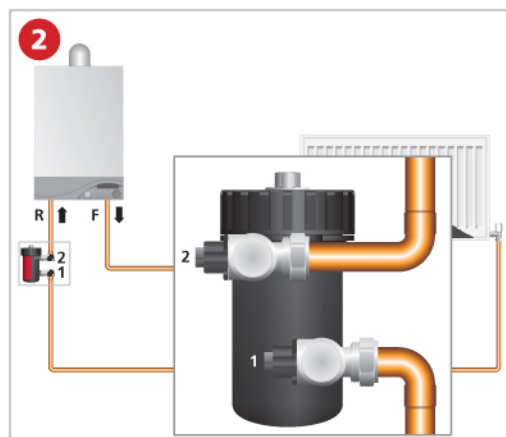


## *MagnaCleanse* STEP BY STEP

**Removal of black iron oxide and non-magnetic material and cleanser for combination/sealed systems**

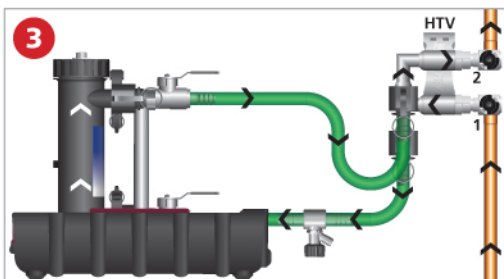


Having completed all relevant preliminary electrical safety checks to boiler and pipework confirming safe isolation and earth path, isolate central heating system and drain.



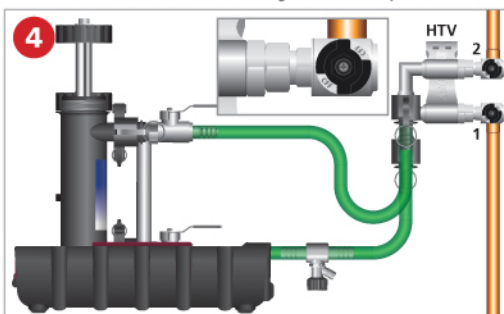
Identify location for installation of *MagnaClean* filter. Prepare pipework, installing *MagnaClean* copper elbows and isolation valves supplied.

N.B. Refer to *MagnaClean* installation instructions.

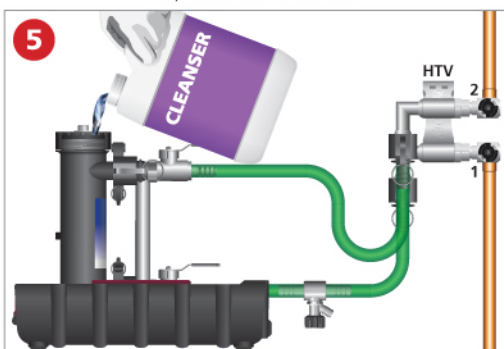


Having completed the installation of the *MagnaClean*, remove the filter and attach the *MagnaClean* hoses between the *RapidFlush* Filter and the *MagnaClean* HTV connector attached to the isolation valve on the pipework.

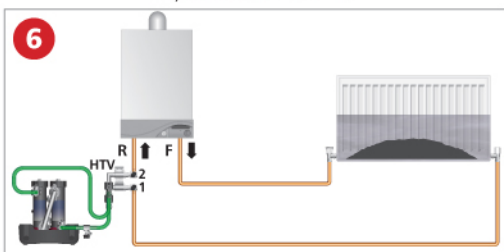
**N.B.** The flow through *MagnaClean RapidFlush Filter* should enter the bottom right and exit top left.



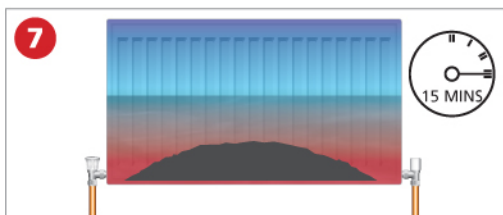
Turn OFF isolation valves on the *RapidFlush Filter*. Loosen and remove the lid assembly from one of the *RapidFlush Filter* canisters.



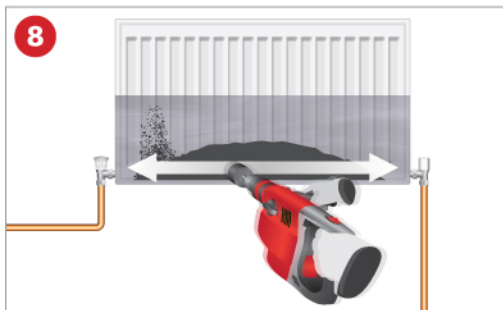
Add a suitable cleanser to the system via the *RapidFlush Filter* canisters.



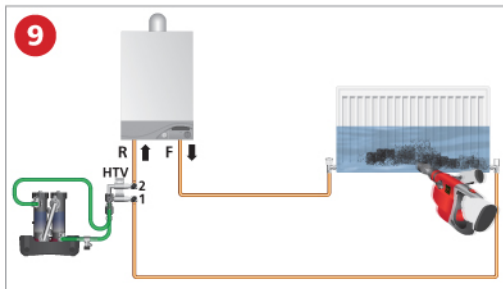
Turn ON isolation valves on the *RapidFlush Filter*. Re-fill and pressurise the central heating system ensuring the radiators are half-full. Check for leaks.



Turn on heating system (all radiators open) for 15 minutes. The radiators should be hot at the bottom, cold at the top.



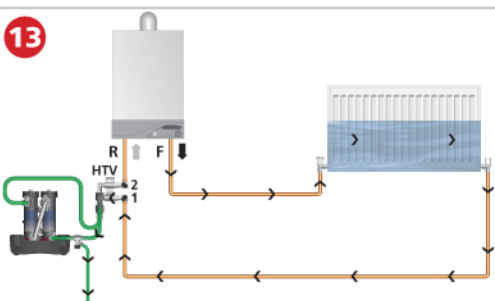
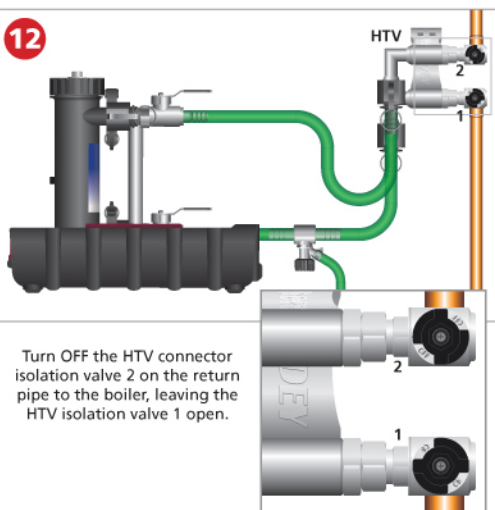
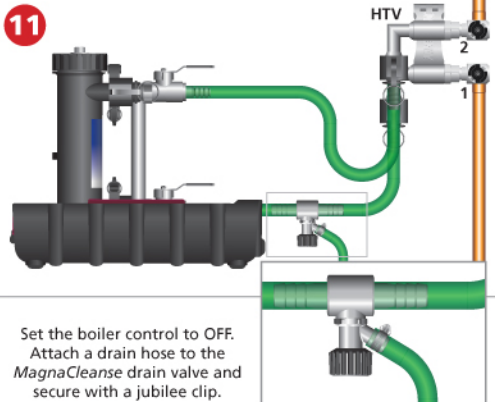
Turn off any by-pass valves and all the radiators, leaving only one radiator open at a time. With the system running, using ADEY's *VibraClean* tool attached to an SDS drill, set to hammer only mode with no rotary action, agitate each radiator for 15-20 seconds.



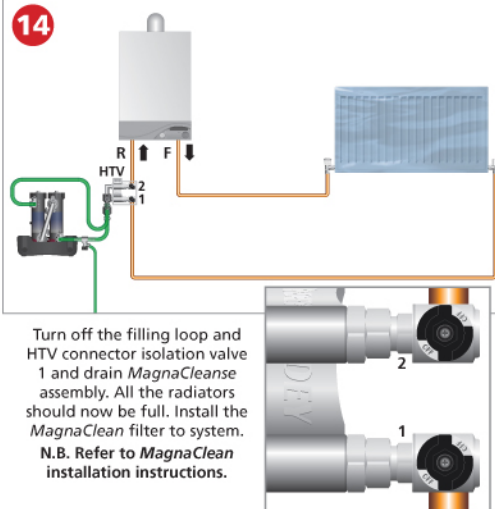
Continue the *VibraClean* radiator agitation to dislodge any sludge deposits until the return hose to the *RapidFlush Filter* runs clear.



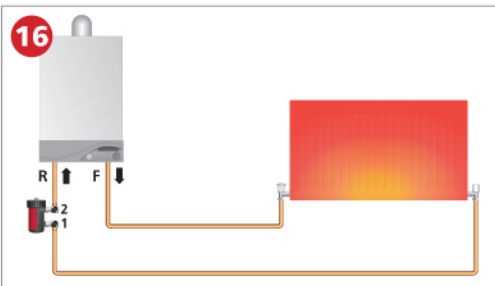
Isolate and clean the *RapidFlush Filter* as required. Using Personal Protective Equipment i.e. gloves and paper towels, wipe off any magnetite into a bucket or waste bag and dispose of correctly. When satisfied, open up the next radiator, turn off the treated radiator and repeat the process until all radiators are clean.



Check that all radiators and bypasses are turned OFF, leaving the furthest radiator from the boiler open. Turn on the filling loop and allow the mains water to flush through the system. Allow the water to drain out to a convenient point outside until clear. When complete, fill and vent the radiator and allow to circulate for 30 seconds. Always open up the next radiator before turning off the cleansed radiator. Repeat this process on each radiator until system flushing is complete.



Add a suitable inhibitor into the canister i.e. use the Pro-Fill bleed valve or remove canister lid assembly and pour into the filter (holds approximately half a litre). Open up the isolation valves and remove any air.



Turn on the system and re-set controls to the customer requirements. Open any by-pass valves previously closed. Commission the system following the manufacturer's instructions. Before leaving the property, carry out the final job – **SERVICE *MagnaClean* FILTER** ensuring a final check is carried out for leaks.



## Another breakthrough in system flushing

*MagnaCleanse* represents another breakthrough in central heating system flushing and is suitable for all domestic systems. ADEY recommends *MagnaCleanse* as the best means of ensuring ongoing system maintenance and protection delivering benefits for installers and homeowners.

The company that pioneered magnetic filtration and the award winning *MagnaClean* technology has developed *MagnaCleanse* to deliver a highly effective approach to system cleansing. It also has the potential to deliver a financial return in time saving and referrals from satisfied customers.

- Removes virtually ALL suspended black iron oxide in ONE pass
- Routine system flushing could be possible in just TWO hours
- Effective flushing results
- Cleanser remains concentrated within the system throughout the process
- Cleanser remains heated within the system throughout the process
- Significant water savings – Disposal ONLY at the end of the process



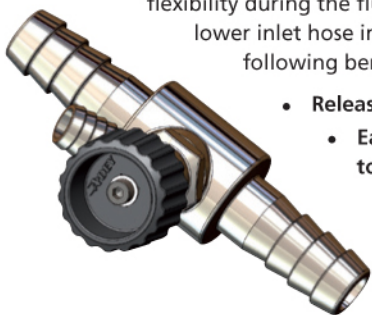
## VibraClean® key to success

ADEY's *VibraClean* radiator agitator is an essential part of the *MagnaCleanse* flushing process. Our experience has shown that it is possible to remove more sludge in 20 seconds than 30 minutes of operation without *VibraClean*. The precision radiator agitator liberates sludge and hardened deposits without the need to remove a radiator again.



## Drain valve delivers greater flushing control

ADEY's drain valve has been introduced to give installers greater control and flexibility during the flushing process. Installed onto the *RapidFlush Filter's* lower inlet hose in a matter of minutes, the drain valve delivers the following benefits:



- Releases system pressure
- Easy *RapidFlush Filter* servicing with water drained to clean and disconnect the product
- Easy flushing of residual cleanser from the system
- Assists in cleansing the system of non-ferrous particles

# MagnaCleanse®

## Lifetime system protection

The damaging effects of black iron oxide on new and existing central heating systems are recognised throughout the industry. Poor system performance, higher energy bills, increased carbon emissions and premature system breakdown are just some of the symptoms.

While power-flushing is extremely effective when carried out by a qualified engineer, it's a fact that the build-up of iron oxide is an ongoing issue within the system.

*MagnaCleanse* delivers a highly effective central heating system flushing solution because it not only removes just as much sludge from the system in the vast majority of cases, it also provides ongoing lifetime protection with the installation of a *MagnaClean* domestic filter. For routine flushing, it is possible to carry out the whole process in as little as two hours giving installers the opportunity to undertake more calls during the working day.

*Note: Extreme system deterioration caused by excessive magnetite sludge build-up and blockage may require further remedial action.*



### IMPORTANT

A *MagnaCleanse RapidFlush Filter* **MUST** be used when carrying out the *MagnaCleanse* process.

Installation of *MagnaClean* filters and carrying out the *MagnaCleanse* process should only be undertaken by competent installers. If in any doubt, consult a qualified heating engineer.

Always follow the Standard Electrical Best Practice guidelines when installing *MagnaClean*.

## Your *MagnaCleanse* kit

The complete *MagnaCleanse* kit gives installers everything they require to carry out the *MagnaCleanse* process or a system power-flush and includes the following:

***MagnaCleanse RapidFlush Filter, VibraClean, MagnaCleanse hose-to-valve connector, hose length (x2), hose clamps (x6), female cam locks (x4), drain valve.***

### CAUTION

**The *MagnaCleanse* hose-to-valve connector may become hot during operation. Handle with caution.**



**PROFESSIONAL HEATING SOLUTIONS**

Telephone: 01242 546700 Email: [info@adey.co.uk](mailto:info@adey.co.uk)

[www.adey.co.uk](http://www.adey.co.uk)



Produced from recycled material