

BAXI
Make it easy



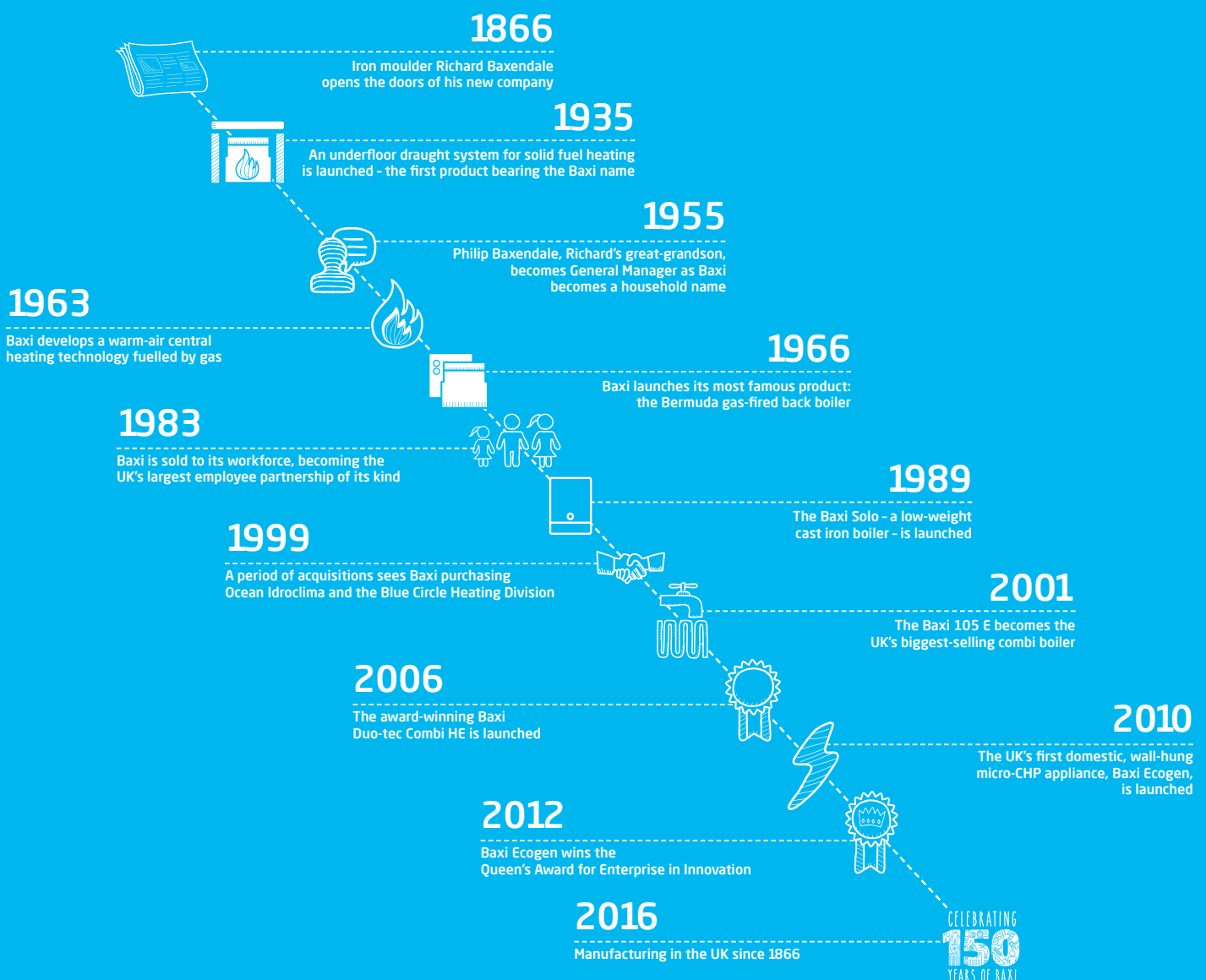
Baxi range guide

A brand you can trust

Baxi has been manufacturing in the UK for over 150 years. It has a heritage of providing cutting edge heating products for homes and is the best known boiler manufacturer amongst homeowners.[†]

We continue to invest in the business to provide reliable, energy efficient heating and hot water products, backed by industry-leading customer support, nationwide availability of parts and training.

A brief history of Baxi



[†]According to independent research.

Baxi make it easy



We are committed to making your experience with Baxi as easy as possible.

Reliability

Every Baxi boiler has to pass a full function test using gas, water and electricity, before it leaves the production line.

Warranty

We are so confident in the reliability of our boilers that we provide industry-leading warranties, providing peace of mind for you and your customers. And our warranty terms and conditions have been approved by the Plain English Campaign so they are easy to understand.

Efficiency

All Baxi boilers are Energy Saving Trust endorsed, helping households to save money on their gas bills.

Support

We are there for you – providing practical training, technical help and genuine parts – when you need us.

Easy to install

Our 200, 400, 600 & 800 boilers come with a wall bracket, complete with preformed copper pipe tails, to save you time and money during installation.



Key features

- Exceptional flow rate up to 16.4 litres per minute (35°C rise)
- Easy-Fill permanent filling link
- Compact Adey Magnaclean Micro 2 magnetic system filter included
- Built in frost thermostat
- Compatible with Multifit flue kits
- OpenTherm interface
- Compatible with Baxi uSense
- Front access to all components

Benefits

- Ideal for homes with high hot water requirements
- Single spring loaded lever enables end user to top up system pressures quickly and easily
- Protects the heating system and boiler
- Suitable for siting in garages and lofts
- Industry leading choice of bends, lengths and accessories
- Gives greater control of the boiler when installed with compatible OpenTherm controls
- Heating can be operated via a smart device
- Easy to service and maintain

* Subject to registration and an annual service. Terms and conditions apply. Visit baxi.co.uk/warranty



I regularly recommend the Platinum Combi. The 10 year warranty means customers trust the product and I know that it won't let them down.

Simon Harrington
Harrington Plumbing & Heating

Baxi Platinum+ 40 Combi

The Baxi Platinum+ 40 Combi boiler has been designed to give premium hot water performance. It delivers a flow rate up to 16.4 litres per minute and comes with a 10 year parts and labour warranty* for complete peace of mind. In the box is a compact Adey Magnaclean Micro2 magnetic system filter to protect the heating system and boiler.

It is British built with tough brass hydraulics and has an OpenTherm interface giving greater control of the boiler when installed with compatible OpenTherm controls

Accessories

The following accessories are compatible with the Baxi Platinum+ 40 Combi



Baxi IFOS (In Flue Outdoor Sensor)
See page 83 for options.



5117391
Baxi wireless programmable room thermostat



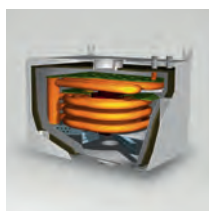
720030501
Baxi seven day programmable room thermostat



720971601
Baxi wired room thermostat



247206
Baxi integral electro-mechanical 24hr timer



720056901
Multifit GasSaver GS1



7649277
Baxi uSense smart thermostat

Technical specifications

HOW WE MAKE IT EASY

Pre-plumbing
jig for quick and
simple installation.



Boiler dimensions

| Width [A] | Height [B] | Depth [C] |
|-----------|------------|-----------|
| 450mm | 780mm | 345mm |

Service clearances

| Side [D] | Upper [E] | Lower [F] | Front [G] |
|----------|--|-----------|---|
| 5mm* | 175mm* (* 300mm if using 80/125 flueing system) | 150mm* | 5mm in operation* (* 450mm for servicing purposes) |

*These are the minimum recommended dimensions.
Greater clearance will aid installation and maintenance.



What's in the box?



Platinum Combi boiler



Pre-plumbing jig



Literature pack



Copper
pipe tails



Adey Magnaclean Micro2
magnetic system filter



Easy-Fill permanent
filling link

Technical details

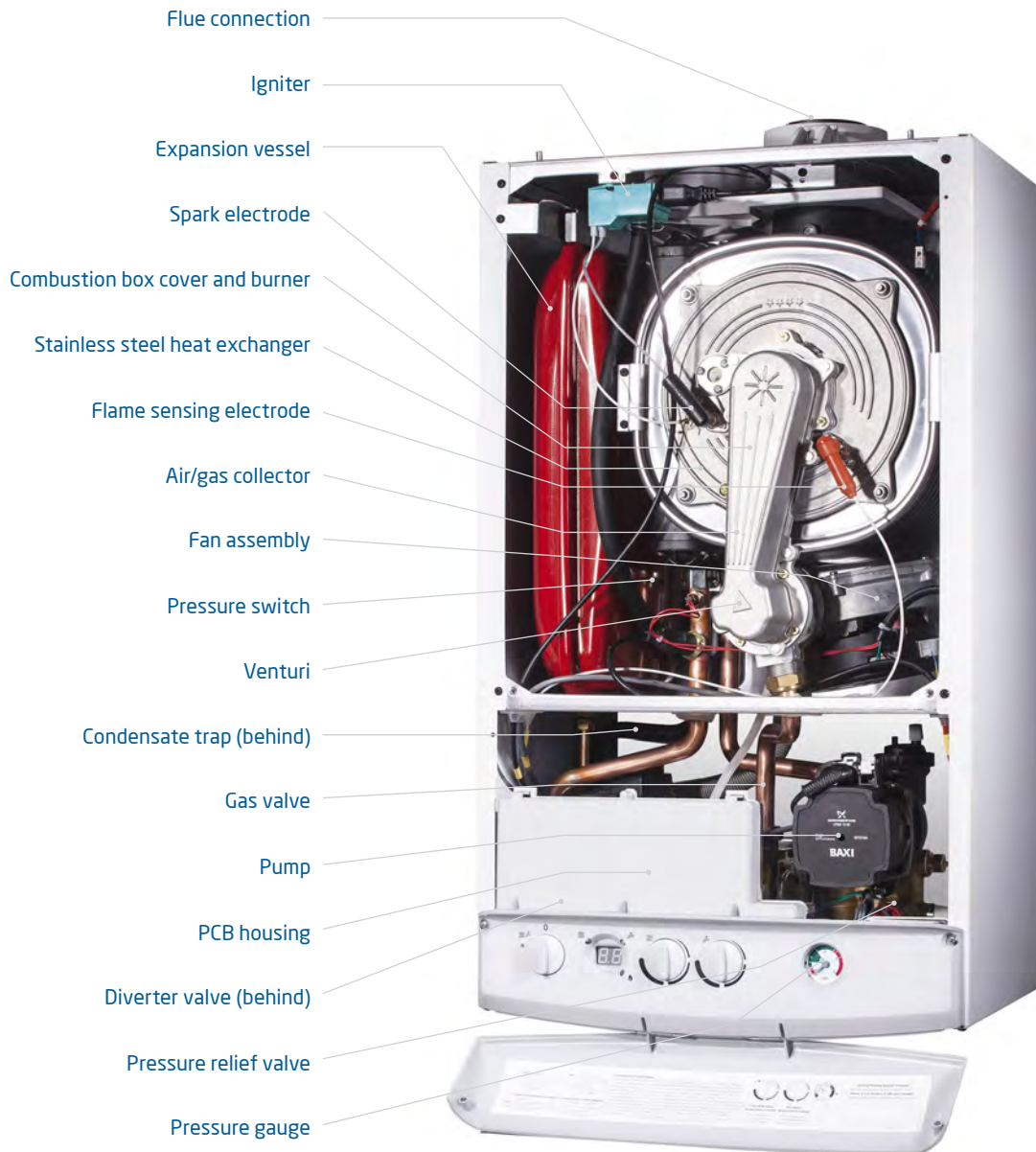
Baxi Platinum+40 Combi ErP

+ 40 Combi

| | | |
|--|------------------------------|-------------------|
| Sales code | Boiler only | 7731616 |
| Controls and accessories | | |
| User adjustable DHW temperature | Range - 30°C to 60°C | ✓ |
| User adjustable CH temperature | Range - 25°C to 80°C | ✓ |
| Temp/status/fault diagnosis display | | LCD Display |
| uSense Wired (optional accessory) | 7649277 | Optional |
| Integral 24 hr Electro-mechanical timer (optional accessory) | | Optional |
| Wired 24 hr Electro-mechanical timer (optional accessory) | 720971401 | Optional |
| 7 day RF Digital Programmable Room Thermostat (optional accessory) | 720030501 | Optional |
| Single Channel Wired Programmable room Thermostat (optional accessory) | 7212438 | Optional |
| Single Channel Wired Timer (optional accessory) | 7212444 | Optional |
| Wired Room Thermostat (optional accessory) | 720971601 | Optional |
| Multifit IFOS weather compensation (optional accessory) | 7724181 | Optional |
| Multifit IFOS Extension (optional accessory) | 7724260 | Optional |
| Ridge Tile IFOS (optional accessory) | 7729943 | Optional |
| Gas | | |
| Natural gas | | ✓ |
| Propane LPG | | N/A |
| Inlet supply pressure (natural gas) | mbar (nominal) | 20 |
| Maximum Gas Rate (G20) Qmax | m3/hr | 4.36 |
| NOx | mg/kWh | 23 |
| NOx Class | | 6 |
| Heat input CH | kW (max) Gross (QnHs) | 36.4 |
| | kW (min) Gross (QnHs) | 11 |
| Heat Output CH (non-condensing) | kW (Max) (Pn) | 32 |
| | kW (Min) (Pn) | 9.6 |
| Heat Output CH (condensing) | kW (Max) (Pnc) | 34.4 |
| | kW (Min) (Pnc) | 12.1 |
| Heat Input Domestic Hot Water (DHW) | kW max gross (QnHs) | 45.7 |
| Heat Output Domestic Hot Water (DHW) | kW max | 40 |
| ErP Product Information | | |
| Seasonal Space Heating Energy Efficiency | | 93% |
| Sound Power Levels, indoors | lWA dB | 50 |
| Space Heating Efficiency Class | | A |
| Water Heating Declared Load Profile | | XL |
| Water Heating Efficiency class | | A |
| Electrical | | |
| Electrical Supply | Volts / Hz | 230 / 50 |
| Permanent Live Required | | ✓ |
| Electrical Cable Supplied | (0.75mm heat resistant flex) | ✓ |
| Power consumption when firing | Watts | 125 |
| External fuse rating | Amps | 3 |
| Internal fuse rating | Amps | F2L |
| Boiler IP rating (electrical protection) without integral timer fixed | Approval category | IPX5D |
| Circulating pump exercise feature | | ✓ |
| Pump Overrun | | ✓ |
| Integral 'boiler only' Frost Thermostat | | ✓ |
| Mechanical | | |
| Hanging method | | Jig |
| Isolating valves with pre-formed copper tails | | ✓ |
| Gas supply Connection | (mm) | 22 |
| Central Heating Connections | (mm) | 22 |
| Domestic Hot Water Connections | (mm) | 15 |
| Condense Discharge Pipe Connections | (mm) | 21.5 |
| Safety Discharge Pipe Connections | (mm) | 15 |
| Remote Secondary PRV kit (optional accessory) | 5121379 | Optional |
| Hydraulic | | |
| Maximum DHW flow rate (Delta T @ 35°C rise) | l/min | 16.4 |
| Minimum DHW flow rate required | l/min | 2 |
| Minimum Operating DHW pressure required | bar | 0.5 |
| Maximum DHW System Pressure | bar | 8 |
| Safety Discharge Pressure | bar | 3 |
| Compartment Ventilation Required | | X |
| Integral Expansion Vessel | Size (litres) | 10 |
| Maximum Capacity of CH System | Litres | 125 |
| Integral Automatic Bypass | | ✓ |
| CH System Inhibitor Required | | ✓ |
| Concentric flue systems | | |
| Concentric Flue Diameters | (mm) | 60/100 and 80/125 |
| Standard telescopic horizontal flue (60/100) | (mm) | 315 - 500 |
| Standard horizontal flue kit (60/100) | (mm) | 685 |
| Max equiv length horizontal / vertical (60/100) | m | 10 |
| Max equiv length horizontal / vertical (80/125) | m | 20 |
| Equivalent length per 135° bend | m | 0.5 |
| Equivalent length per 93° bend | m | 1 |
| Weights | | |
| Installer lift weight (boiler) | (kg) | 42.2 |
| Gross packaged boiler weight | (kg) | 50 |

What's inside the boiler?

Baxi Platinum+ 40 Combi



HOW WE MAKE IT EASY

**An industry-leading
choice of flues.**

Flues

Horizontal concentric flues Ø 60/100mm

Multifit flue group A

| Item description | Colour | Specification | Key and OD dimensions | Sales code |
|---|---------------------------|---------------|-----------------------|------------|
| 1 Horizontal telescopic flue inc. low profile elbow and fixing screws | White pipe/white terminal | 315mm - 500mm | 100mm | 720599401 |
| 2 Horizontal telescopic flue inc. low profile elbow and fixing screws | White pipe/black terminal | 315mm - 500mm | 100mm | 720598701 |
| 3 1m flue extension inc. fixing screws | White | 1000mm | 100mm | 720648801 |
| 4 93° flue bend inc. fixing screws | White | 93° | 100mm | 720648401 |
| 5 135° flue bend inc. fixing screws (pair) | White | 135° | 100mm | 720647901 |
| 6 Standard horizontal flue inc. low profile elbow and fixing screws | White pipe/black terminal | 685mm | 100mm | 7222019 |

Plume displacement kits Ø 60/100mm

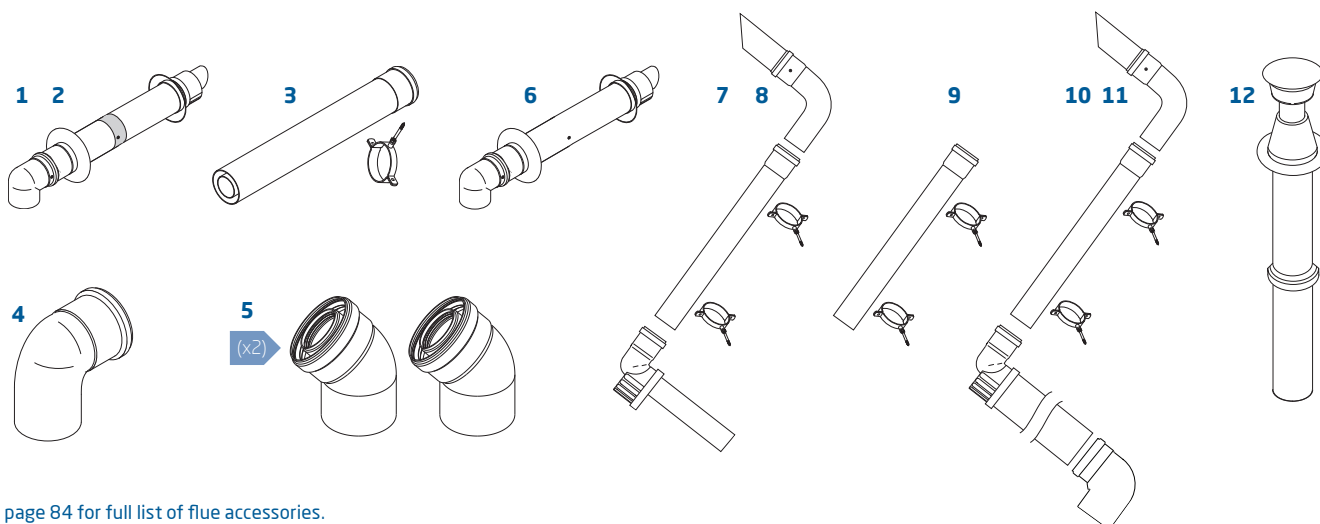
Multifit flue group A

| Item description | Colour | Specification | Key and OD dimensions | Sales code |
|---|--------|---------------|-----------------------|------------|
| 7 Plume displacement terminal kit for telescopic flue inc 1m extension and brackets | White | | 60mm | 720627001 |
| 8 Plume displacement terminal kit for telescopic flue inc 1m extension and brackets | Black | | 60mm | 720622901 |
| 9 Plume displacement kit extension and brackets | White | 1000mm | 60mm | 720643401 |
| 10 Plume displacement terminal kit inc. 1m extension and brackets | White | | 60mm | 7225717 |
| 11 Plume displacement terminal kit inc. 1m extension and brackets | Black | | 60mm | 7225716 |

Vertical concentric flues Ø 60/100mm

Multifit flue group A

| Item description | Colour | Specification | Key and OD dimensions | Sales code |
|--|--------|---------------|-----------------------|------------|
| 12 Vertical flue terminal | Black | | 100mm | 5118576 |
| 3 1m flue extension inc. fixing screws | White | 1000mm | 100mm | 720648801 |
| 4 93° flue bend inc. fixing screws | White | 93° | 100mm | 720648401 |
| 5 135° flue bend inc. fixing screws (pair) | White | 135° | 100mm | 720647901 |



See page 84 for full list of flue accessories.



Key features

Outputs 25kW, 30kW, 36kW

Compact Adey Magnaclean Micro 2 magnetic system filter included

Compact cupboard fit

OpenTherm interface

Compatible with Baxi uSense

Simple hanging bracket

Pipes behind facility within the boiler casing

Top central flue

Benefits

To meet different end user hot water requirements (up to 15 litres per minute)

Protects the heating system and boiler

Can be installed in a 290mm deep cupboard

Gives greater control of the boiler when installed with compatible OpenTherm controls

Heating can be operated via a smart device

Easy to install giving greater flexibility of pipework connections

Save time, space and money by piping behind within the footprint of the boiler

Easy to replace old boiler, saving time

* Subject to registration and an annual service. Terms and conditions apply. Visit baxi.co.uk/warranty



Baxi 800 Combi

The Baxi 800 Combi has a 10 year parts and labour warranty* and includes a compact Adey Magnaclean Micro2 magnetic system filter to protect the boiler and heating system.

The boiler is small enough to fit into a 290mm deep cupboard, has a built in pipes behind facility within the boiler casing and brass hydraulics.

Accessories

The following accessories are compatible with the Baxi 800 Combi



Baxi IFOS (In Flue Outdoor Sensor)
See page 83 for options.



7649277
Baxi uSense smart thermostat



720030501
Baxi 7 day programmable room thermostat



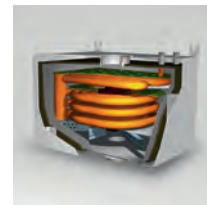
7212444
Baxi single channel wired timer



7212438
Baxi single channel wired programmable room thermostat



720971601
Baxi wired room thermostat



7712941
Multifit GasSaver GS2

Technical specifications

HOW WE MAKE IT EASY

Wall mounted bracket for quick and simple installation.



Boiler dimensions

| Width [A] | Height [B] | Depth [C] |
|-----------|------------|-----------|
| 390mm | 700mm | 285mm |

Service clearances

| Side [D] | Upper [E] | Lower [F] | Front [G] |
|----------|-----------|-----------|--|
| 5mm* | 178mm* | 200mm* | 5mm in operation*, (* 450mm for servicing purposes) |

*These are the minimum recommended dimensions.
Greater clearance will aid installation and maintenance.



What's in the box?



Baxi 800 Combi boiler



Wall mounting bracket



Literature pack



Copper pipe tails



Adey Magnaclean Micro2 magnetic system filter



Easy-Fill permanent filling link

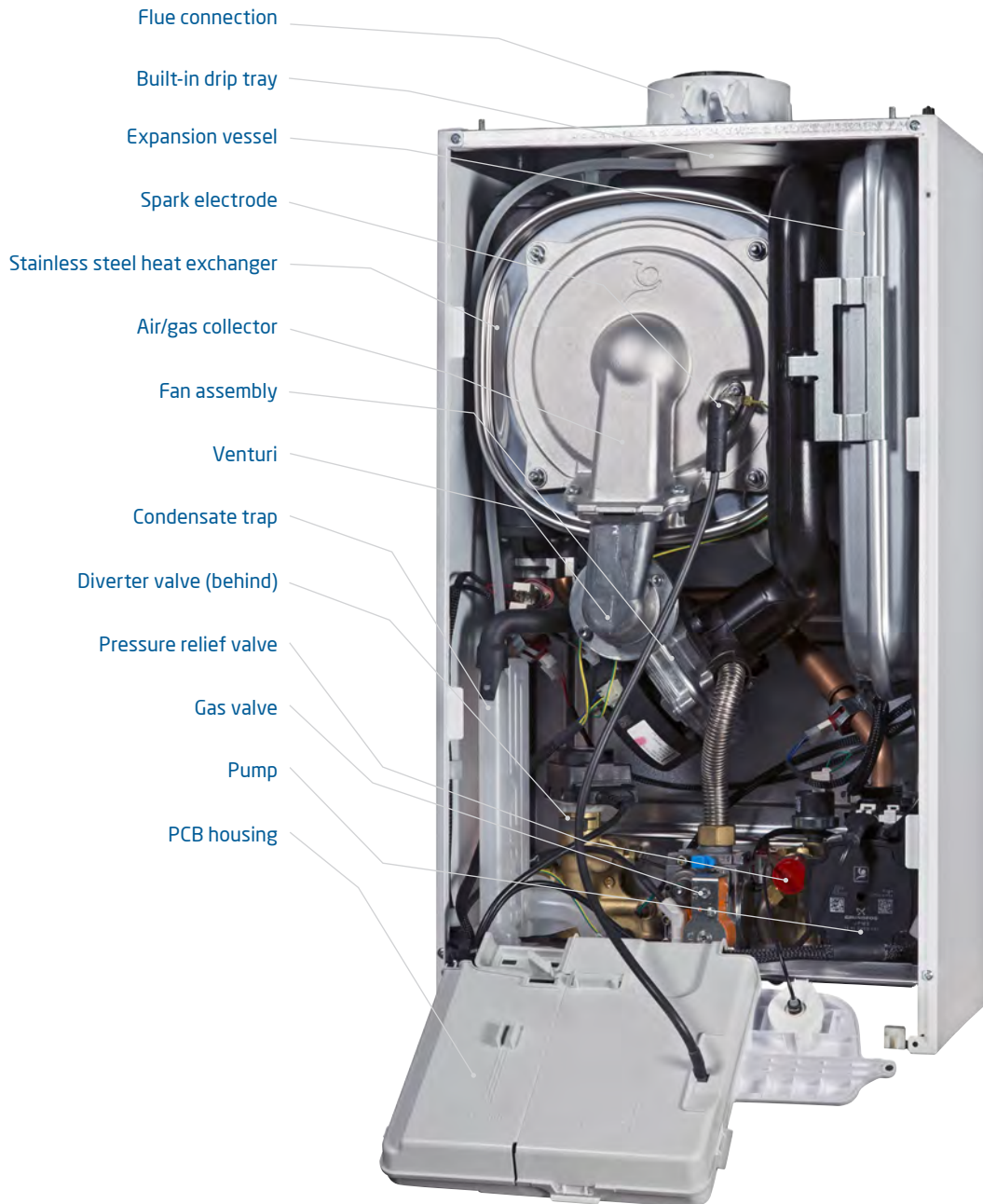
Technical details

Baxi 800 Combi ErP

| | | 825 Combi | 830 Combi | 836 Combi |
|--|------------------------------|-------------------|-------------------|-------------------|
| Sales code | Boiler only | 7732189 | 7731874 | 7731705 |
| Controls and accessories | | | | |
| User adjustable DHW temperature | Range - 30°C to 60°C | ✓ | ✓ | ✓ |
| User adjustable CH temperature | Range - 25°C to 80°C | ✓ | ✓ | ✓ |
| Temp/status/fault diagnosis display | | LCD Display | LCD Display | LCD Display |
| uSense Wired (optional accessory) | 7649277 | Optional | Optional | Optional |
| Wired 24 hr Electro-mechanical timer (optional accessory) | 720971401 | Optional | Optional | Optional |
| 7 day RF Digital Programmable Room Thermostat (optional accessory) | 720030501 | Optional | Optional | Optional |
| Single Channel Wired Programmable room Thermostat (optional accessory) | 7212438 | Optional | Optional | Optional |
| Single Channel Wired Timer (optional accessory) | 7212444 | Optional | Optional | Optional |
| Wired Room Thermostat (optional accessory) | 720971601 | Optional | Optional | Optional |
| Multifit IFOS weather compensation (optional accessory) | 7724181 | Optional | Optional | Optional |
| Multifit IFOS Extension (optional accessory) | 7724260 | Optional | Optional | Optional |
| Ridge Tile IFOS (optional accessory) | 7729943 | Optional | Optional | Optional |
| Gas | | | | |
| Natural gas | | ✓ | ✓ | ✓ |
| Propane LPG | | N/A | N/A | N/A |
| Inlet supply pressure (natural gas) | mbar (nominal) | 20 | 20 | 20 |
| Maximum Gas Rate (G20) Qmax | m3/hr | 2.71 | 3.26 | 3.81 |
| NOx | mg/kWh | 31 | 31 | 39 |
| NOx Class | | 6 | 6 | 6 |
| Heat input CH | kW (max) Gross (QnHs) | 22.9 | 22.9 | 28.6 |
| | kW (min) Gross (QnHs) | 6.9 | 6.9 | 7.4 |
| Heat Output CH (non-condensing) | kW (Max) (Pn) | 20 | 20 | 25 |
| | kW (Min) (Pn) | 6.1 | 6.1 | 6.7 |
| Heat Output CH (condensing) | kW (Max) (Pnc) | 21.2 | 21.2 | 26.4 |
| | kW (Min) (Pnc) | 6.7 | 6.7 | 6.7 |
| Heat Input Domestic Hot Water (DHW) | kW max gross (QnwHs) | 28.6 | 34.3 | 40.8 |
| Heat Output Domestic Hot Water (DHW) | kW max | 25 | 30 | 36 |
| ErP Product Information | | | | |
| Seasonal Space Heating Energy Efficiency | | 93% | 93% | 93% |
| Sound Power Levels, indoors | IWA dB | 48 | 48 | 51 |
| Space Heating Efficiency Class | | A | A | A |
| Water Heating Declared Load Profile | | XL | XL | XL |
| Water Heating Efficiency class | | A | A | A |
| Electrical | | | | |
| Electrical Supply | Volts / Hz | 230 / 50 | 230 / 50 | 230 / 50 |
| Permanent Live Required | | ✓ | ✓ | ✓ |
| Electrical Cable Supplied | (0.75mm heat resistant flex) | ✗ | ✗ | ✗ |
| Power consumption when firing | Watts | 68 | 78 | 110 |
| External fuse rating | Amps | 3 | 3 | 3 |
| Internal fuse rating | Amps | F2A H250V | F2A H250V | F2A H250V |
| Boiler IP rating (electrical protection) without integral timer fixed | Approval category | IPX5D | IPX5D | IPX5D |
| Circulating pump exercise feature | | ✓ | ✓ | ✓ |
| Pump Overrun | | ✓ | ✓ | ✓ |
| Integral 'boiler only' Frost Thermostat | | ✓ | ✓ | ✓ |
| Mechanical | | | | |
| Hanging method | | Bracket | Bracket | Bracket |
| Isolating valves with pre-formed copper tails | | ✓ | ✓ | ✓ |
| Gas supply Connection | (mm) | 22 | 22 | 22 |
| Central Heating Connections | (mm) | 22 | 22 | 22 |
| Domestic Hot Water Connections | (mm) | 15 | 15 | 15 |
| Condense Discharge Pipe Connections | (mm) | 21.5 | 21.5 | 21.5 |
| Safety Discharge Pipe Connections | (mm) | 15 | 15 | 15 |
| Pre-Plumb Jig (optional accessory) | 7682545 | Optional | Optional | Optional |
| Rear Pipework Kit (optional accessory) | 7682790 | Optional | Optional | Optional |
| Remote Secondary PRV kit (optional accessory) | 5121379 | Optional | Optional | Optional |
| Hydraulic | | | | |
| Maximum DHW flow rate (Delta T @ 35°C rise) | l/min | 9.8 | 11.5 | 15.0 |
| Minimum DHW flow rate required | l/min | 2 | 2 | 2 |
| Minimum Operating DHW pressure required | bar | 0.5 | 0.5 | 0.5 |
| Maximum DHW System Pressure | bar | 8 | 8 | 8 |
| Safety Discharge Pressure | bar | 3 | 3 | 3 |
| Compartment Ventilation Required | | ✗ | ✗ | ✗ |
| Integral Expansion Vessel | Size (litres) | 7 | 7 | 7 |
| Maximum Capacity of CH System | Litres | 100 | 100 | 100 |
| Integral Automatic Bypass | | ✓ | ✓ | ✓ |
| CH System Inhibitor Required | | ✓ | ✓ | ✓ |
| Concentric flue systems | | | | |
| Concentric Flue Diameters | (mm) | 60/100 and 80/125 | 60/100 and 80/125 | 60/100 and 80/125 |
| Standard telescopic horizontal flue (60/100) | (mm) | 315 - 500 | 315 - 500 | 315 - 500 |
| Standard horizontal flue kit (60/100) | (mm) | 685 | 685 | 685 |
| Max equiv length horizontal / vertical (60/100) | m | 10 | 10 | 10 |
| Max equiv length horizontal / vertical (80/125) | m | 20 | 20 | 20 |
| Equivalent length per 135° bend | m | 0.5 | 0.5 | 0.5 |
| Equivalent length per 93° bend | m | 1 | 1 | 1 |
| Weights | | | | |
| Installer Lift Weight (boiler) | (kg) | 29.2 | 29.2 | 30.2 |
| Gross packaged boiler weight | (kg) | 35 | 35 | 35 |

What's inside the boiler?

Baxi 800 Combi



HOW WE MAKE IT EASY

**An industry-leading
choice of flues.**

Flues

Horizontal concentric flues Ø 60/100mm

Multifit flue group A

| Item description | Colour | Specification | Key and OD dimensions | Sales code |
|---|---------------------------|---------------|-----------------------|------------|
| 1 Horizontal telescopic flue inc. low profile elbow and fixing screws | White pipe/white terminal | 315mm - 500mm | 100mm | 720599401 |
| 2 Horizontal telescopic flue inc. low profile elbow and fixing screws | White pipe/black terminal | 315mm - 500mm | 100mm | 720598701 |
| 3 1m flue extension inc. fixing screws | White | 1000mm | 100mm | 720648801 |
| 4 93° flue bend inc. fixing screws | White | 93° | 100mm | 720648401 |
| 5 135° flue bend inc. fixing screws (pair) | White | 135° | 100mm | 720647901 |
| 6 Standard horizontal flue inc. low profile elbow and fixing screws | White pipe/black terminal | 685mm | 100mm | 7222019 |

Plume displacement kits Ø 60/100mm

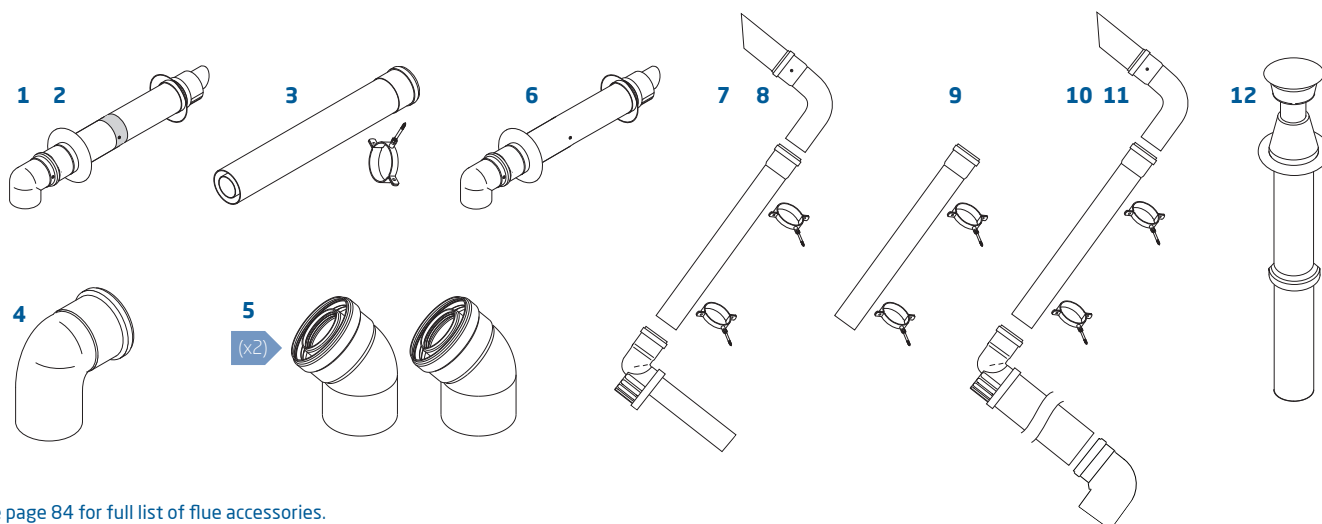
Multifit flue group A

| Item description | Colour | Specification | Key and OD dimensions | Sales code |
|---|--------|---------------|-----------------------|------------|
| 7 Plume displacement terminal kit for telescopic flue inc 1m extension and brackets | White | | 60mm | 720627001 |
| 8 Plume displacement terminal kit for telescopic flue inc 1m extension and brackets | Black | | 60mm | 720622901 |
| 9 Plume displacement kit extension and brackets | White | 1000mm | 60mm | 720643401 |
| 10 Plume displacement terminal kit inc. 1m extension and brackets | White | | 60mm | 7225717 |
| 11 Plume displacement terminal kit inc. 1m extension and brackets | Black | | 60mm | 7225716 |

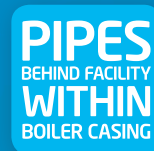
Vertical concentric flues Ø 60/100mm

Multifit flue group A

| Item description | Colour | Specification | Key and OD dimensions | Sales code |
|--|--------|---------------|-----------------------|------------|
| 12 Vertical flue terminal | Black | | 100mm | 5118576 |
| 3 1m flue extension inc. fixing screws | White | 1000mm | 100mm | 720648801 |
| 4 93° flue bend inc. fixing screws | White | 93° | 100mm | 720648401 |
| 5 135° flue bend inc. fixing screws (pair) | White | 135° | 100mm | 720647901 |



See page 84 for full list of flue accessories.



Key features

Outputs 24kW, 30kW and 36kW

Compact cupboard fit

OpenTherm interface

Compatible with Baxi uSense

Simple hanging bracket

Pipes behind facility within the boiler casing

Top central flue

Benefits

To meet different end user hot water requirements (up to 15 litres per minute)

Can be installed in a 290mm deep cupboard

Gives greater control of the boiler when installed with compatible OpenTherm controls

Heating can be operated via a smart device

Easy to install giving greater flexibility of pipework connections

Saves time, space and money by piping behind within the footprint of the boiler

Easier to replace old boiler, saving time

* Subject to registration and an annual service. Terms and conditions apply. Visit baxi.co.uk/warranty

** At 35°C rise



"I've fitted a few of these boilers now, they're very well built with copper and brass hydraulics, easy to install with a hanging bracket and an option to fit pipes down the back without the need for an additional fixing jig and nice, easy user interface that customers like. Easy to commission and with a 7 year warranty great boiler at a good price - will be fitting more of these"

Paul McGrath
Paul McGrath Heating Services

Baxi 600 Combi

The Baxi 600 is small enough to fit into a 290mm deep cupboard, has a built in pipes behind facility within the boiler casing and brass hydraulics. It's compatible with the Baxi uSense smart thermostat and comes with a 7 year extended warranty*.

Accessories

The following accessories are compatible with the Baxi 600 Combi



Baxi IFOS (In Flue Outdoor Sensor)
See page 83 for options.



7649277
Baxi uSense smart thermostat



720030501
Baxi 7 day programmable room thermostat



7212444
Baxi single channel wired timer



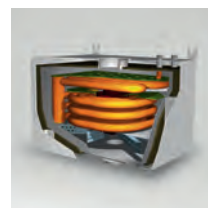
7212438
Baxi single channel wired programmable room thermostat



720971401
Baxi wall mounted timer



720971601
Baxi wired room thermostat



7712941
Multifit GasSaver GS2

Technical specifications

HOW WE MAKE IT EASY

Wall mounted bracket for quick and simple installation.



Boiler dimensions

| Width [A] | Height [B] | Depth [C] |
|-----------|------------|-----------|
| 390mm | 700mm | 285mm |

Service clearances

| Side [D] | Upper [E] | Lower [F] | Front [G] |
|----------|-----------|-----------|--|
| 5mm* | 178mm* | 200mm* | 5mm in operation*, (* 450mm for servicing purposes) |

*These are the minimum recommended dimensions.
Greater clearance will aid installation and maintenance.



What's in the box?



Baxi 600 Combi boiler



Wall mounted bracket



Literature and fitting pack



Easy-Fill permanent filling link



Copper pipe tails

CH 22mm
DHW 15mm
Ga 15mm
Condense 21.5mm
Safety discharge pipe connection 15mm

Technical details

| Baxi 600 Combi ErP | | 624 Combi | 630 Combi | 636 Combi |
|--|------------------------------|--------------------------------|-------------------|-------------------|
| Sales code | Boiler only | 7682194 | 7682101 | 7691350 |
| Controls and accessories | | | | |
| User adjustable DHW temperature | Range - 35°C to 60°C | ✓ | ✓ | ✓ |
| User adjustable CH temperature | Range - 25°C to 80°C | ✓ | ✓ | ✓ |
| Temp/status/fault diagnosis display | | LCD display | LCD display | LCD display |
| uSense Wired (optional accessory) | 7649277 | Optional | Optional | Optional |
| Wired 24hr Electro-mechanical timer (optional accessory) | 720971401 | Optional | Optional | Optional |
| 7 Day RF Digital Programmable Room Thermostat (optional accessory) | 720030501 | Optional | Optional | Optional |
| Single Channel Wired Programmable Room Thermostat (optional accessory) | 7212438 | Optional | Optional | Optional |
| Single Channel Wired Timer (optional accessory) | 7212444 | Optional | Optional | Optional |
| Wired room Thermostat (optional accessory) | 720971601 | Optional | Optional | Optional |
| Wired Outdoor Weather Sensor (optional accessory) | 7703233 | Optional | Optional | Optional |
| Pre-plumbing jig accessory (optional accessory) | 7682545 | ✓ | ✓ | ✓ |
| Rear pipework kit (optional accessory) | 7682790 | ✓ | ✓ | ✓ |
| Remote secondary PRV kit (optional accessory) | 5121379 | ✓ | ✓ | ✓ |
| Baxi IFOS (optional accessory) | 7683084 | Optional | Optional | Optional |
| Gas | | | | |
| Natural gas | | ✓ | ✓ | ✓ |
| Propane LPG | | Refer to LPG models on page 22 | | |
| Inlet supply pressure (natural gas) | mbar (nominal) | 20 | 20 | 20 |
| Maximum Gas Rate (G20) Qmax | m³/hr | 2.71 | 3.26 | 3.81 |
| NOx | mg/kWh | 31 | 31 | 39 |
| NOx class | | 6 | 6 | 6 |
| Heat input CH | kW (Max) Gross (QnHs) | 22.9 | 22.9 | 28.6 |
| | kW (Min) Gross (QnHs) | 6.9 | 6.9 | 7.4 |
| | kW (Max) (Pn) | 20 | 20 | 25 |
| Heat output CH (non condensing) | kW (Min) (Pn) | 6.1 | 6.1 | 6.7 |
| | kW (Max) (Pnc) | 21.2 | 21.2 | 26.4 |
| | kW (Min) (Pnc) | 6.7 | 6.7 | 6.7 |
| Heat input domestic hot water (DHW) | kW max gross (Qnwhs) | 28.6 | 34.3 | 40.8 |
| Heat output domestic hot water (Nominal) | kW max | 25 | 30 | 36 |
| SAP 2009 Annual Efficiency (PCDB/SEDBUK) | | 89% | 89% | 89% |
| ErP Product Information | | | | |
| Seasonal Space Heating Energy Efficiency | | 93% | 93% | 93% |
| Sound power level, indoors | LWA dB | 51 | 51 | 50 |
| Space heating efficiency class | | A | A | A |
| Water heating declared load profile | | XL | XL | XL |
| Water heating efficiency class | | A | A | A |
| Electrical | | | | |
| Electrical supply | Volts / Hz | 230V / 50Hz | 230V / 50Hz | 230V/50Hz |
| Permanent live required | | ✓ | ✓ | ✓ |
| Electrical cable supplied | (0.75mm heat resistant flex) | x | x | x |
| Power consumption when firing | Watts | 68 | 78 | 110 |
| External fuse rating | Amps | 3 | 3 | 3 |
| Internal fuse rating | Amps | F2A H250V | F2A H250V | F2A H250V |
| Boiler IP rating (electrical protection) without integral timer fitted | Approval Category | IPX5D | IPX5D | IPX5D |
| Circulating pump exercise feature | | ✓ | ✓ | ✓ |
| Pump overrun | | ✓ | ✓ | ✓ |
| Integral 'boiler only' frost thermostat | | ✓ | ✓ | ✓ |
| Mechanical | | | | |
| Hanging Bracket | | ✓ | ✓ | ✓ |
| Isolating valves with pre-formed copper tails | | ✓ | ✓ | ✓ |
| Gas supply connection | (mm) | 22 | 22 | 22 |
| Central heating connections | (mm) | 22 | 22 | 22 |
| Domestic Hot Water connections | (mm) | 15 | 15 | 15 |
| Condensate discharge pipe connection | (mm) | 21.5 | 21.5 | 21.5 |
| Safety discharge pipe connection | (mm) | 15 | 15 | 15 |
| Easy-Fill permanent filling link | | ✓ | ✓ | ✓ |
| Hydraulic | | | | |
| Maximum DHW flow rate (Delta T @ 35°C max) | l/min | 10.2 | 12.2 | 15.0 |
| Minimum DHW flow rate required | l/min | 2 | 2 | 2 |
| Minimum operating DHW pressure required | bar | 0.5 | 0.5 | 0.5 |
| Maximum DHW system pressure | bar | 8 | 8 | 8 |
| Safety discharge pressure | bar | 3 | 3 | 3 |
| Compartment ventilation required | | x | x | x |
| Easy-Fill permanent filling link supplied | | ✓ | ✓ | ✓ |
| Integral expansion vessel | Size (litres) | 7 | 7 | 7 |
| Maximum capacity of CH system | Litres | 100 | 100 | 100 |
| Integral automatic bypass | | ✓ | ✓ | ✓ |
| CH System Inhibitor Required | | ✓ | ✓ | ✓ |
| Concentric flue systems | | | | |
| Concentric flue diameters | mm | 60/100 and 80/125 | 60/100 and 80/125 | 60/100 and 80/125 |
| Standard telescopic horizontal flue (60/100mm) | mm | 315-500 | 315-500 | 315-500 |
| Standard horizontal flue kit (60/100mm) | mm | 685 | 685 | 685 |
| Max equiv length horizontal/vertical (60/100mm) | m | 10 | 10 | 10 |
| Max equiv length horizontal/vertical (80/125mm) | m | 20 | 20 | 20 |
| Equivalent length per 135° bend | m | 0.50 | 0.50 | 0.50 |
| Equivalent length per 93° bend | m | 1.00 | 1.00 | 1.00 |
| Weights | | | | |
| Installer lift weight (boiler) | Max (kg) | 29.2 | 29.2 | 30.2 |
| Gross packaged boiler weight | (kg) | 32.2 | 32.2 | 33.5 |

Baxi 600 Combi



Flues

Horizontal concentric flues Ø 60/100mm

Multifit flue group A

| Item description | Colour | Specification | Key and OD dimensions | Sales code |
|---|---------------------------|---------------|-----------------------|------------|
| 1 Horizontal telescopic flue inc. low profile elbow and fixing screws | White pipe/white terminal | 315mm - 500mm | 100mm | 720599401 |
| 2 Horizontal telescopic flue inc. low profile elbow and fixing screws | White pipe/black terminal | 315mm - 500mm | 100mm | 720598701 |
| 3 1m flue extension inc. fixing screws | White | 1000mm | 100mm | 720648801 |
| 4 93° flue bend inc. fixing screws | White | 93° | 100mm | 720648401 |
| 5 135° flue bend inc. fixing screws (pair) | White | 135° | 100mm | 720647901 |
| 6 Standard horizontal flue inc. low profile elbow and fixing screws | White pipe/black terminal | 685mm | 100mm | 7222019 |

Plume displacement kits Ø 60/100mm

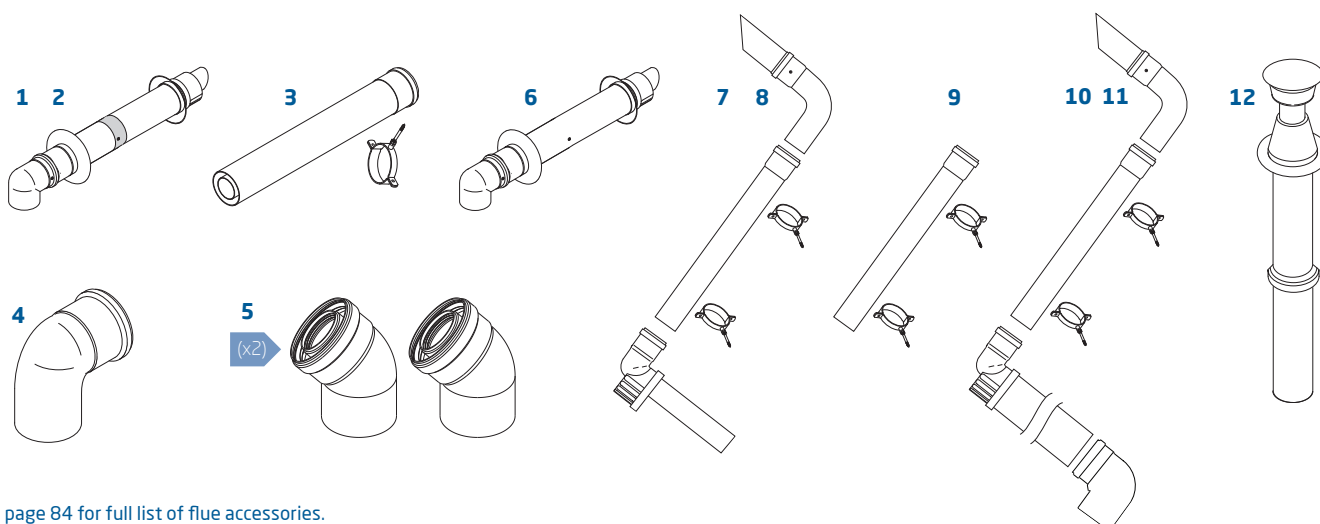
Multifit flue group A

| Item description | Colour | Specification | Key and OD dimensions | Sales code |
|---|--------|---------------|-----------------------|------------|
| 7 Plume displacement terminal kit for telescopic flue inc 1m extension and brackets | White | | 60mm | 720627001 |
| 8 Plume displacement terminal kit for telescopic flue inc 1m extension and brackets | Black | | 60mm | 720622901 |
| 9 Plume displacement kit extension and brackets | White | 1000mm | 60mm | 720643401 |
| 10 Plume displacement terminal kit inc. 1m extension and brackets | White | | 60mm | 7225717 |
| 11 Plume displacement terminal kit inc. 1m extension and brackets | Black | | 60mm | 7225716 |

Vertical concentric flues Ø 60/100mm

Multifit flue group A

| Item description | Colour | Specification | Key and OD dimensions | Sales code |
|--|--------|---------------|-----------------------|------------|
| 12 Vertical flue terminal | Black | | 100mm | 5118576 |
| 3 1m flue extension inc. fixing screws | White | 1000mm | 100mm | 720648801 |
| 4 93° flue bend inc. fixing screws | White | 93° | 100mm | 720648401 |
| 5 135° flue bend inc. fixing screws (pair) | White | 135° | 100mm | 720647901 |



See page 84 for full list of flue accessories.



Key features

Outputs 24kW and 30kW

Compact cupboard fit

OpenTherm interface

Compatible with Baxi uSense

Simple hanging bracket

Pipes behind facility within the boiler casing

Top central flue

Easy-Fill permanent filling link

Benefits

To meet different end user hot water requirements

Can be installed in a 290mm deep cupboard

Gives greater control of the boiler when installed with compatible OpenTherm controls

Heating can be operated via a smart device

Easy to install giving greater flexibility of pipework connections

Saves time, space and money by piping behind within the footprint of the boiler

Easier to replace old boiler, saving time

Single spring loaded lever enables end user to top up system pressures quickly and easily

* Subject to registration and an annual service. Terms and conditions apply. Visit baxi.co.uk/warranty



Baxi 600 Combi LPG

The Baxi 600 Combi LPG is small enough to fit into a 290mm deep cupboard, has a built in pipes behind facility within the boiler casing and brass hydraulics. It's compatible with the Baxi uSense smart thermostat and comes with a 7 year extended warranty*.

Accessories

The following accessories are compatible with the Baxi 600 Combi LPG



Baxi IFOS (In Flue Outdoor Sensor)
See page 83 for options.



7649277
Baxi uSense smart thermostat



720030501
Baxi 7 day programmable room thermostat



7212444
Baxi single channel wired timer



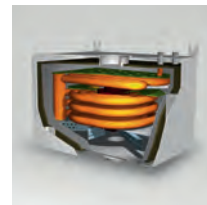
7212438
Baxi single channel wired programmable room thermostat



720971401
Baxi wall mounted timer



720971601
Baxi wired room thermostat



7712941
Multifit GasSaver GS2

Technical specifications

HOW WE MAKE IT EASY

Wall mounted bracket for quick and simple installation.



Boiler dimensions

| Width [A] | Height [B] | Depth [C] |
|-----------|------------|-----------|
| 390mm | 700mm | 285mm |

Service clearances

| Side [D] | Upper [E] | Lower [F] | Front [G] |
|----------|-----------|-----------|--|
| 5mm* | 178mm* | 200mm* | 5mm in operation*, (* 450mm for servicing purposes) |

*These are the minimum recommended dimensions.
Greater clearance will aid installation and maintenance.



What's in the box?



Baxi 600 Combi LPG boiler



Wall mounted bracket



Literature and fitting pack



Easy-Fill permanent filling link



Copper pipe tails

CH 22mm
DHW 15mm
Ga 15mm
Condense 21.5mm
Safety discharge pipe connection 15mm

Technical details

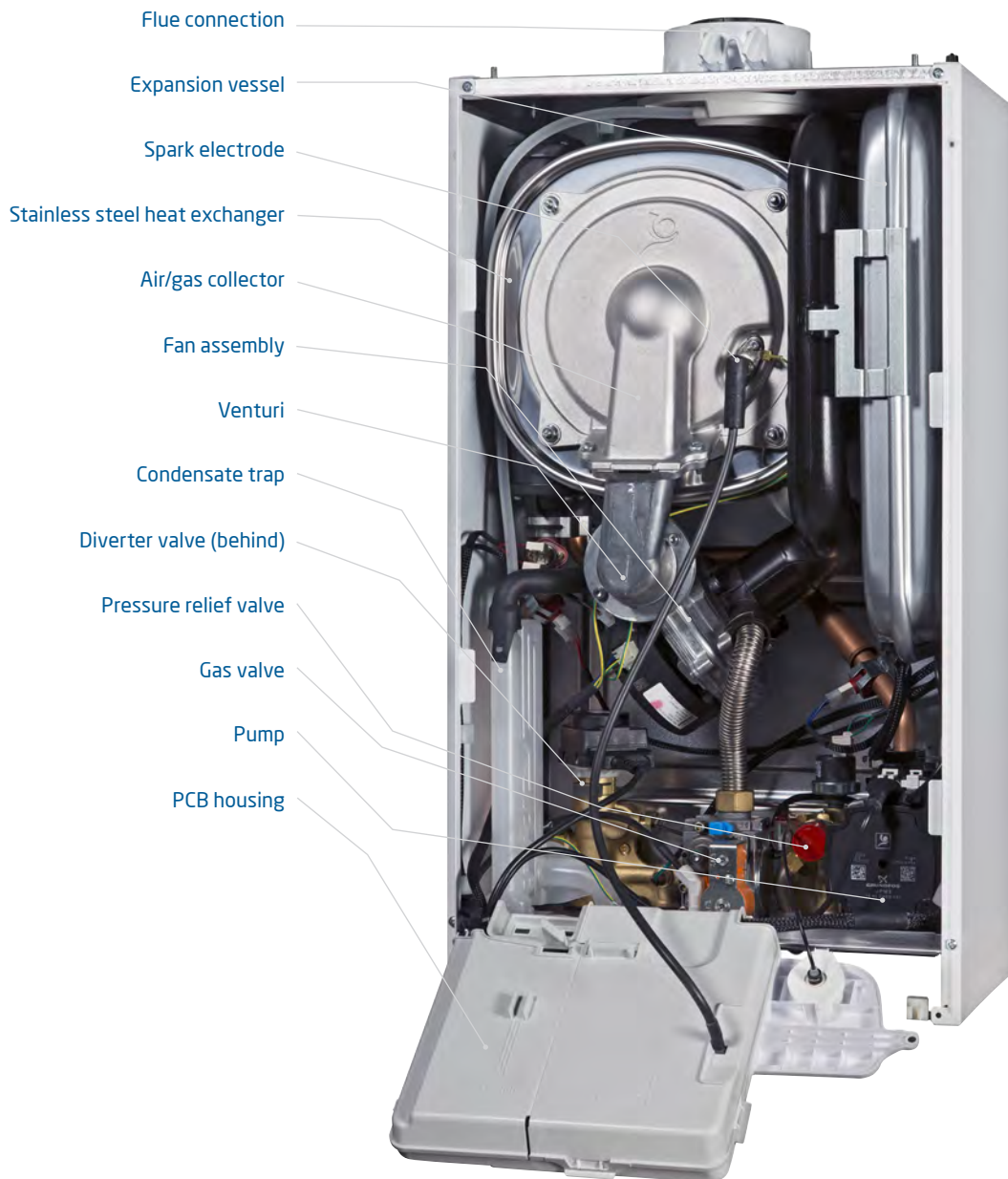
Baxi 600 Combi LPG ErP

624 Combi LPG 630 Combi LPG

| Sales code | Boiler only | 7703803 | 7703804 |
|--|-------------------------------|-------------------|-------------------|
| Controls and accessories | | | |
| User adjustable DHW temperature | Range - 35°C to 60°C | ✓ | ✓ |
| User adjustable CH temperature | Range - 25°C to 80°C | ✓ | ✓ |
| Temp/status/fault diagnosis display | | LCD display | LCD display |
| uSense Wired (optional accessory) | 7649277 | Optional | Optional |
| Wired 24hr Electro-mechanical timer (optional accessory) | 720971401 | Optional | Optional |
| 7 Day RF Digital Programmable Room Thermostat (optional accessory) | 720030501 | Optional | Optional |
| Single Channel Wired Programmable Room Thermostat (optional accessory) | 7212438 | Optional | Optional |
| Single Channel Wired Timer (optional accessory) | 7212444 | Optional | Optional |
| Wired room Thermostat (optional accessory) | 720971601 | Optional | Optional |
| Wired Outdoor Weather Sensor (optional accessory) | 7703233 | Optional | Optional |
| Pre-plumbing jig accessory (optional accessory) | 7682545 | ✓ | ✓ |
| Rear pipework kit (optional accessory) | 7682790 | ✓ | ✓ |
| Remote secondary PRV kit (optional accessory) | 5121379 | ✓ | ✓ |
| Baxi IFOS (optional accessory) | 7683084 | Optional | Optional |
| Gas | | | |
| Natural gas | Refer to NG models on page 10 | | ✓ |
| Propane LPG | | ✓ | ✓ |
| Inlet supply pressure (LPG) | mbar (nominal) | 37 | 37 |
| Maximum Gas Rate (G31) Qmax | m³/hr | 1.98 | 2.38 |
| NOx | mg/kWh | 29.7 | 28.3 |
| NOx class | | 6 | 6 |
| Heat input CH (Nominal) | kW (Max) Gross (QnHs) | 22.9 | 22.9 |
| | kW (Min) Gross (QnHs) | 6.9 | 6.9 |
| | kW (Max) (Pn) | 20 | 20 |
| | kW (Min) (Pn) | 6.1 | 6.2 |
| Heat output CH (condensing) | kW (Max) (Pnc) | 21.2 | 21.2 |
| | kW (Min) (Pnc) | 6.7 | 6.7 |
| | kW max gross (QnwHs) | 28.6 | 34.3 |
| | kW max | 25 | 30 |
| Heat input domestic hot water (Nominal) | | | |
| Heat output domestic hot water | | | |
| SAP 2009 Annual Efficiency (PCDB/SEDBUK) | | 89% | 89% |
| ErP Product Information | | | |
| Seasonal Space Heating Energy Efficiency | | 93% | 93% |
| Sound power level, indoors | LWA dB | 51 | 51 |
| Space heating efficiency class | | A | A |
| Water heating declared load profile | | XL | XL |
| Water heating efficiency class | | A | A |
| Electrical | | | |
| Electrical supply | Volts / Hz | 230V / 50Hz | 230V / 50Hz |
| Permanent live required | | ✓ | ✓ |
| Electrical cable supplied | (0.75mm heat resistant flex) | x | x |
| Power consumption when firing | Watts | 68 | 78 |
| External fuse rating | Amps | 3 | 3 |
| Internal fuse rating | Amps | F2A H250V | F2A H250V |
| Boiler IP rating (electrical protection) without integral timer fitted | Approval Category | IPX5D | IPX5D |
| Circulating pump exercise feature | | ✓ | ✓ |
| Pump overrun | | ✓ | ✓ |
| Integral 'boiler only' frost thermostat | | ✓ | ✓ |
| Mechanical | | | |
| Hanging Bracket | | ✓ | ✓ |
| Isolating valves with pre-formed copper tails | | ✓ | ✓ |
| Gas supply connection | (mm) | 22 | 22 |
| Central heating connections | (mm) | 22 | 22 |
| Domestic Hot Water connections | (mm) | 15 | 15 |
| Condensate discharge pipe connection | (mm) | 21.5 | 21.5 |
| Safety discharge pipe connection | (mm) | 15 | 15 |
| Easy-Fill permanent filling link | | ✓ | ✓ |
| Hydraulic | | | |
| Maximum DHW flow rate (Delta T @ 35°C max) | l/min | 10.2 | 12.2 |
| Minimum DHW flow rate required | l/min | 2 | 2 |
| Minimum operating DHW pressure required | bar | 0.5 | 0.5 |
| Maximum DHW system pressure | bar | 8 | 8 |
| Safety discharge pressure | bar | 3 | 3 |
| Compartment ventilation required | | x | x |
| Easy-Fill permanent filling link supplied | | ✓ | ✓ |
| Integral expansion vessel | Size (litres) | 7 | 7 |
| Maximum capacity of CH system | Litres | 100 | 100 |
| Integral automatic bypass | | ✓ | ✓ |
| CH System Inhibitor Required | | ✓ | ✓ |
| Concentric flue systems | | | |
| Concentric flue diameters | mm | 60/100 and 80/125 | 60/100 and 80/125 |
| Standard telescopic horizontal flue (60/100mm) | mm | 315-500 | 315-500 |
| Standard horizontal flue kit (60/100mm) | mm | 685 | 685 |
| Max equiv length horizontal/vertical (60/100mm) | m | 10 | 10 |
| Max equiv length horizontal/vertical (80/125mm) | m | 20 | 20 |
| Equivalent length per 135° bend | m | 0.50 | 0.50 |
| Equivalent length per 93° bend | m | 1.00 | 1.00 |
| Weights | | | |
| Installer lift weight (boiler) | Max (kg) | 29.2 | 29.2 |
| Gross packaged boiler weight | (kg) | 32.2 | 32.2 |

What's inside the boiler?

Baxi 600 Combi LPG



HOW WE MAKE IT EASY

An industry-leading
choice of flues.

Flues

Horizontal concentric flues Ø 60/100mm

Multifit flue group A

| Item description | Colour | Specification | Key and OD dimensions | Sales code |
|---|---------------------------|---------------|-----------------------|------------|
| 1 Horizontal telescopic flue inc. low profile elbow and fixing screws | White pipe/white terminal | 315mm - 500mm | 100mm | 720599401 |
| 2 Horizontal telescopic flue inc. low profile elbow and fixing screws | White pipe/black terminal | 315mm - 500mm | 100mm | 720598701 |
| 3 1m flue extension inc. fixing screws | White | 1000mm | 100mm | 720648801 |
| 4 93° flue bend inc. fixing screws | White | 93° | 100mm | 720648401 |
| 5 135° flue bend inc. fixing screws (pair) | White | 135° | 100mm | 720647901 |
| 6 Standard horizontal flue inc. low profile elbow and fixing screws | White pipe/black terminal | 685mm | 100mm | 7222019 |

Plume displacement kits Ø 60/100mm

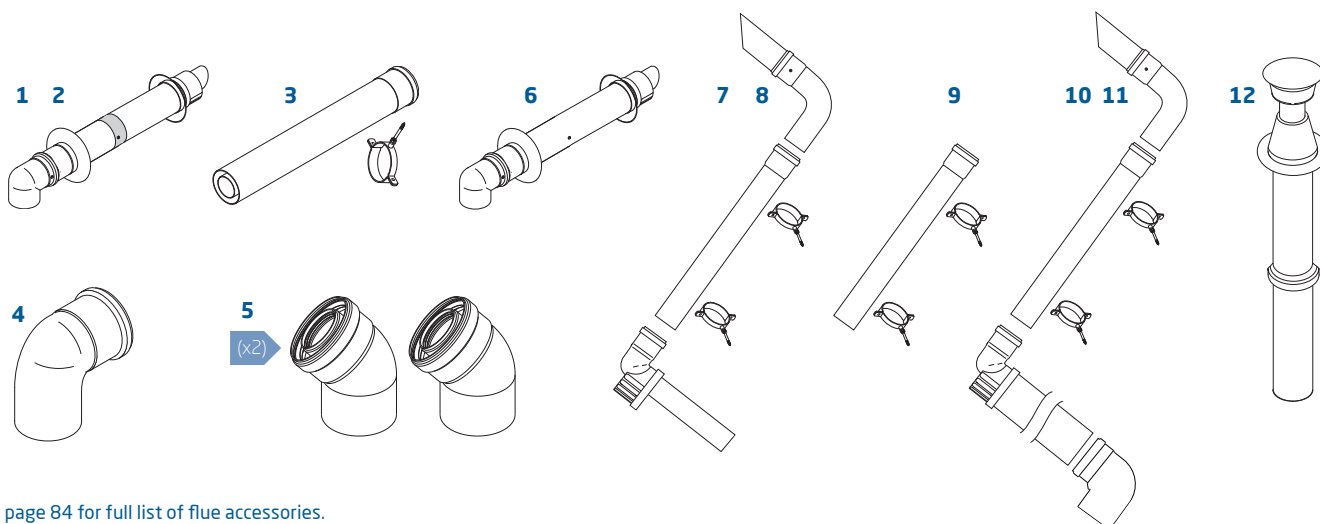
Multifit flue group A

| Item description | Colour | Specification | Key and OD dimensions | Sales code |
|---|--------|---------------|-----------------------|------------|
| 7 Plume displacement terminal kit for telescopic flue inc 1m extension and brackets | White | | 60mm | 720627001 |
| 8 Plume displacement terminal kit for telescopic flue inc 1m extension and brackets | Black | | 60mm | 720622901 |
| 9 Plume displacement kit extension and brackets | White | 1000mm | 60mm | 720643401 |
| 10 Plume displacement terminal kit inc. 1m extension and brackets | White | | 60mm | 7225717 |
| 11 Plume displacement terminal kit inc. 1m extension and brackets | Black | | 60mm | 7225716 |

Vertical concentric flues Ø 60/100mm

Multifit flue group A

| Item description | Colour | Specification | Key and OD dimensions | Sales code |
|--|--------|---------------|-----------------------|------------|
| 12 Vertical flue terminal | Black | | 100mm | 5118576 |
| 3 1m flue extension inc. fixing screws | White | 1000mm | 100mm | 720648801 |
| 4 93° flue bend inc. fixing screws | White | 93° | 100mm | 720648401 |
| 5 135° flue bend inc. fixing screws (pair) | White | 135° | 100mm | 720647901 |



See page 84 for full list of flue accessories.



Key features

Outputs: 24kW and 28kW

Compact size

26kg lift weight

Simple hanging bracket

Modular fan gas air unit

Rigid filling link

Optional stand off frame

Industry leading choice of flue lengths, bends and accessories

Vertical packaging

OpenTherm Interface

Benefits

To suit most property sizes

Can be installed in a 290mm deep cupboard

Easier to manoeuvre

For easy installation

For easy maintenance

For a neater finish

Neater installations for hidden pipework

For versatile siting and easy replacement

Easy to transport and unpack

Compatible with Baxi uSense smart wired thermostat

* Subject to registration and an annual service. Terms and conditions apply. Visit baxi.co.uk/warranty



Baxi listened to the needs of installers and their customers and has designed a compact combi that will fit virtually anywhere, making it easier for installers to site the boiler.

Steve Turner
P&H Services Ltd, Kenilworth

Baxi 400 Combi

The Baxi 400 is a high efficiency boiler; simple to use and provides plenty of heating and hot water. The boiler has a rigid filling loop for a neater finish and is compatible with smart controls that are operated using a smart phone or tablet. The reliable Baxi technology is backed by a five year parts and labour warranty* for extra peace of mind.

Accessories and controls

The following accessories are compatible with the Baxi 400 Combi



Baxi IFOS (In Flue Outdoor Sensor)
See page 83 for options.



7649277
Baxi uSense smart thermostat



7658276
Baxi plug-in 24 hr single channel mechanical timer



7658523
Baxi plug-in 7 day single channel digital timer



7658781
Baxi plug-in receiver 24 hr single channel programmable mechanical room thermostat



7658789
Baxi plug-in receiver 7 day RF digital single channel programmable room thermostat



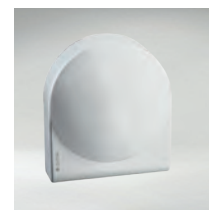
7212438
Baxi single channel wired programmable room thermostat



7212444
Baxi single channel wired timer



720971601
Baxi room thermostat



7703233
Multifit wired outdoor sensor - Combi

Technical specifications

HOW WE MAKE IT EASY

Wall mounted
bracket for quick and
simple installation.



Boiler dimensions

| Width [A] | Height [B] | Depth [C] |
|-----------|------------|-----------|
| 395mm | 700mm | 279mm |

Service clearances

| Side [D] | Upper [E] | Lower [F] | Front [G] |
|----------|-----------|-----------|--|
| 5mm* | 178mm* | 200mm* | 6mm in operation*, (* 450mm for servicing purposes) |

*These are the minimum recommended dimensions.
Greater clearance will aid installation and maintenance.



What's in the box?



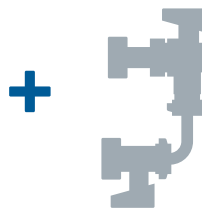
Baxi 400 Combi boiler



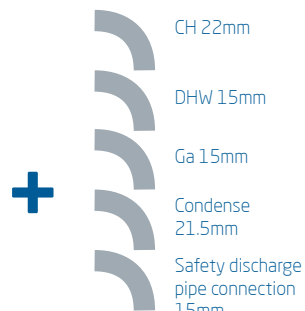
Wall mounted
bracket



Literature and
fitting pack



Filling loop



Copper
pipe tails

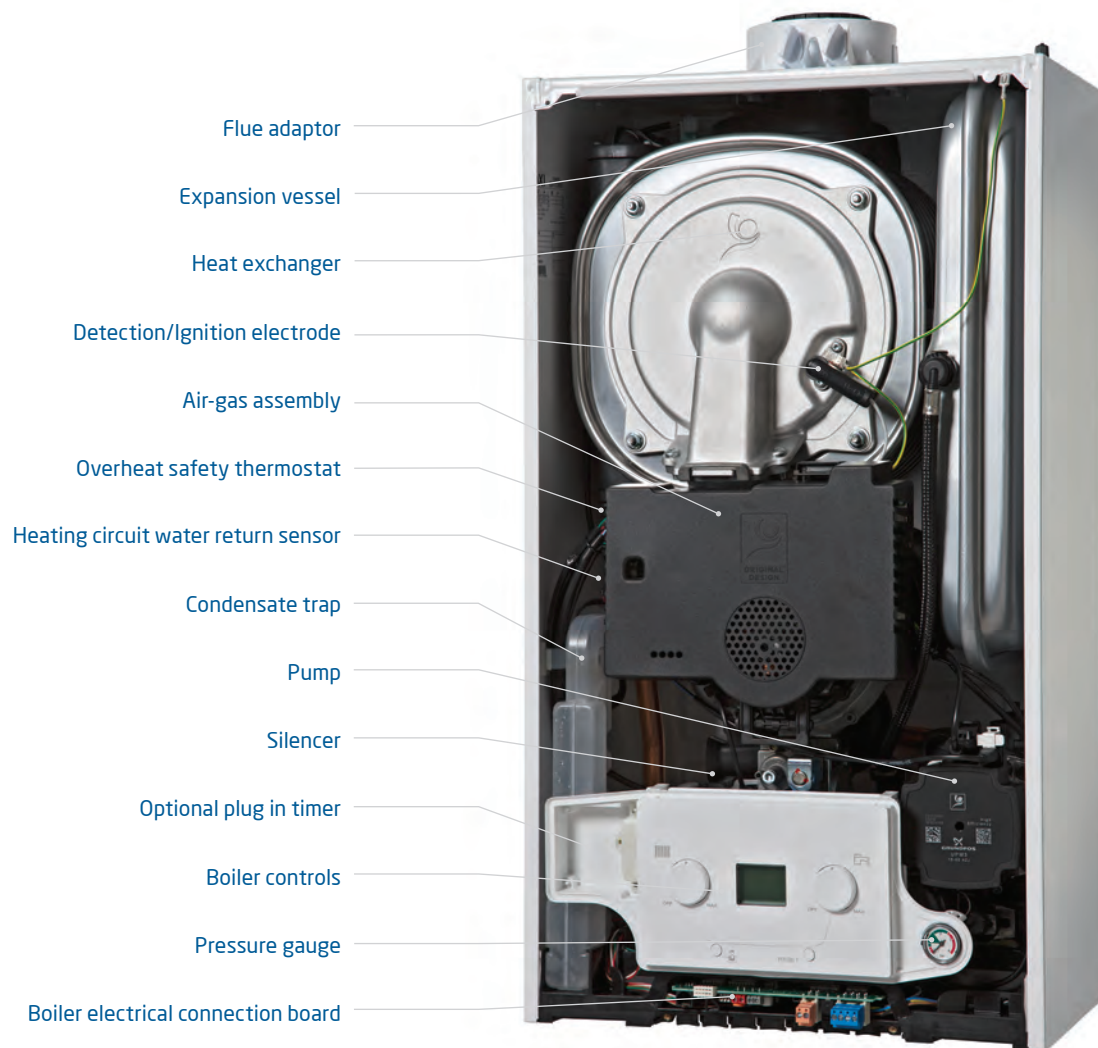
Technical details

Baxi 400 Combi

| | | 24 Combi | 28 Combi |
|---|-----------------------------|-------------|-------------|
| Sales code | Boiler only | 7656162 | 7656163 |
| Accessories and controls | | | |
| Concealed user controls | | x | x |
| Operating mode selector switch with reset | | ✓ | ✓ |
| User adjustable DHW temperature | Range - 35°C to 60°C | ✓ | ✓ |
| User adjustable CH temperature | Range - 25°C to 80°C | ✓ | ✓ |
| Temp/status/fault diagnosis display | | LCD display | LCD display |
| Integral 24 hr electro-mechanical timer (247206) | | Optional | Optional |
| Plug-in 24 hr mechanical timer combi (7658276) | | Optional | Optional |
| Plug-in 7 day digital timer combi (7658523) | | Optional | Optional |
| Plug-in receiver 24 hr RF programmable mechanical room thermostat-combi (7658781) | | Optional | Optional |
| Plug-in receiver 7 day RF digital programmable mechanical room thermostat-combi (7658789) | | Optional | Optional |
| Single channel 7 day wired programmable room thermostat-combi (7212438) | | Optional | Optional |
| Single channel wired timer (7212444) | | Optional | Optional |
| Room thermostat (720971601) | | Optional | Optional |
| Baxi 200 and 400 stand off kit (7659335) | | Optional | Optional |
| Baxi IFOS (7683084) | | Optional | Optional |
| Baxi Easy-Fill (7665482) | | Optional | Optional |
| ErP Product Information | | | |
| Seasonal Space Heating Energy Efficiency | % | 93 | 93 |
| NOx | mg/kWh | 38 | 40 |
| Sound power level, indoors | LWA dB | 48 | 50 |
| Space heating efficiency class | | A | A |
| Water heating declared load profile | | XL | XL |
| Water heating efficiency class | | A | A |
| Heat input CH | kW (Max) Gross (QnHs) | 22.87 | 27.42 |
| | kW (Min) Gross (QnHs) | 5.44 | 5.44 |
| Heat output CH (non condensing) factory setting | kW (Max) (Pn) | 20 | 20 |
| | kW (Min) (Pn) | 4.8 | 4.8 |
| Heat output CH (condensing) factory setting | kW (Max) (Pnc) | 21.8 | 21.8 |
| | kW (Min) (Pnc) | 5.2 | 5.2 |
| Gas | | | |
| Gas supply connection | (mm) | 22 | 22 |
| Inlet supply pressure (natural gas) | mbar (nominal) | 20 | 20 |
| Maximum Gas Rate (nat Gas after 10 mins) | m³/hr | 2.61 | 3.06 |
| SAP 2009 annual efficiency (PCDB / SEDBUK) | % | 89 | 89 |
| NOx class | | 6 | 6 |
| Mechanical and hydraulic | | | |
| Heat input domestic hot water (DHW) | kW max gross (QnWHs) | 27.4 | 32.1 |
| Heat output domestic hot water | kW max | 24 | 28 |
| Maximum DHW flow rate (Delta T @ 35°C max) | l/min | 9.8 | 11.5 |
| Minimum DHW flow rate required | l/min | 2 | 2 |
| Minimum operating DHW pressure required | bar | 0.15 | 0.15 |
| Maximum DHW system pressure | bar | 8 | 8 |
| Safety discharge pressure | bar | 3 | 3 |
| Compartment ventilation required | | x | x |
| Flow/return pipe size | (mm) | 22 | 22 |
| Filling loop supplied | | ✓ | ✓ |
| Integral expansion vessel | Size (litres) | 7 | 7 |
| CH system inhibitor required | | ✓ | ✓ |
| Condensate discharge pipe size | (mm) | 21.5 | 21.5 |
| Electrical | | | |
| Electrical supply | Volts/Hz | 230V/50Hz | 230V/50Hz |
| Permanent live required | | ✓ | ✓ |
| Electrical cable required | core | 3 x 0.75 | 3 x 0.75 |
| Power consumption when firing | Watts | 84 | 94 |
| External fuse rating | Amps | 3 | 3 |
| Internal fuse rating - connection board | Amps | 0.5 | 0.5 |
| Internal fuse rating - Main PCB board | Amps | 1.6 | 1.6 |
| Boiler IP rating (electrical protection) without integral timer fitted | Approval Category | IPX5D | IPX5D |
| Circulating pump exercise feature | | ✓ | ✓ |
| Pump overrun | | ✓ | ✓ |
| Integral 'boiler only' frost thermostat | | ✓ | ✓ |
| Concentric flue system | | | |
| Standard telescopic concentric flue | Length in mm | 315-500 | 315-500 |
| Horizontal and Vertical concentric (60/100mm) | Max equivalent length (m) | 10 | 10 |
| | Reduction Per 135° bend (m) | 0.5 | 0.5 |
| | Reduction Per 93° bend (m) | 1 | 1 |
| Horizontal and Vertical concentric (80/125mm) | Max equivalent length (m) | 20 | 20 |
| Weights | | | |
| Installer lift weight (boiler) | Max (kg) | 26 | 26 |
| Gross packaged boiler weight | (kg) | 30 | 30 |

What's inside the boiler?

Baxi 400 Combi



HOW WE MAKE IT EASY

**Telescopic horizontal
flue option is quick
and easy to fit.**

Flues

Horizontal concentric flues Ø 60/100mm

Multifit flue group A

| Item description | Colour | Specification | Key and OD dimensions | Sales code |
|---|---------------------------|---------------|-----------------------|------------|
| 1 Horizontal telescopic flue inc. low profile elbow and fixing screws | White pipe/white terminal | 315mm - 500mm | 100mm | 720599401 |
| 2 Horizontal telescopic flue inc. low profile elbow and fixing screws | White pipe/black terminal | 315mm - 500mm | 100mm | 720598701 |
| 3 1m flue extension inc. fixing screws and bracket | White | 1000mm | 100mm | 720648801 |
| 4 93° flue bend inc. fixing screws | White | 93° | 100mm | 720648401 |
| 5 135° flue bend inc. fixing screws (pair) | White | 135° | 100mm | 720647901 |
| 6 Standard horizontal flue inc. low profile elbow and fixing screws | White pipe/black terminal | 685mm | 100mm | 7222019 |

Plume displacement kits Ø 60/100mm

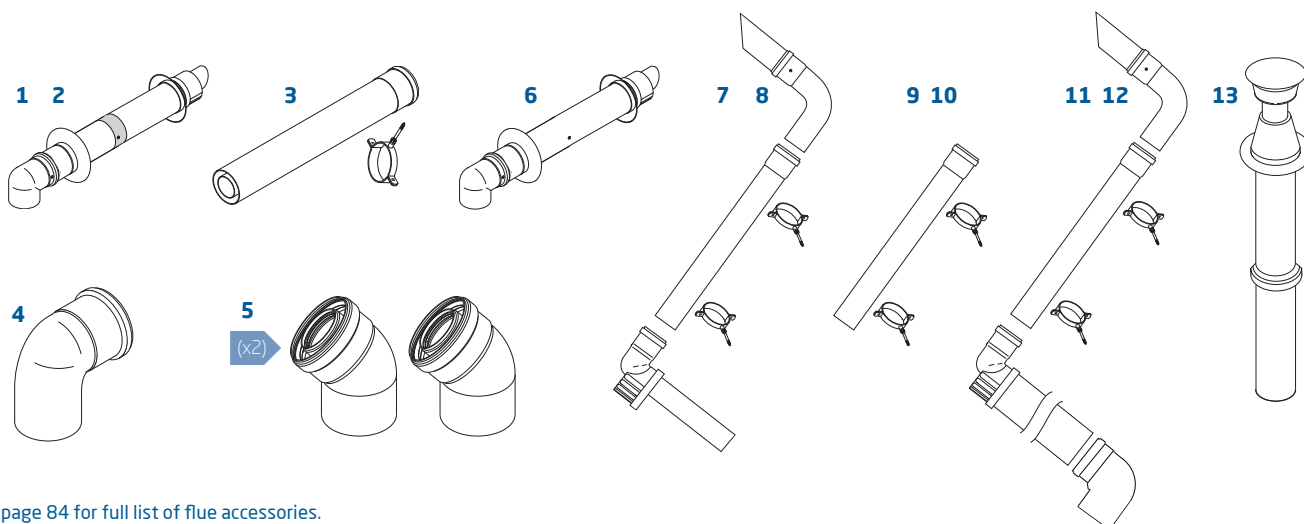
Multifit flue group A

| Item description | Colour | Specification | Key and OD dimensions | Sales code |
|---|--------|---------------|-----------------------|------------|
| 7 Plume displacement terminal kit for telescopic flue inc 1m extension and brackets | White | | 60mm | 720627001 |
| 8 Plume displacement terminal kit for telescopic flue inc 1m extension and brackets | Black | | 60mm | 720622901 |
| 9 Plume displacement kit extension and brackets | White | 1000mm | 60mm | 720643401 |
| 10 Plume displacement kit extension and brackets | Black | 1000mm | 60mm | 720643301 |
| 11 Plume displacement terminal kit inc. 1m extension and brackets | White | | 60mm | 7225717 |
| 12 Plume displacement terminal kit inc. 1m extension and brackets | Black | | 60mm | 7225716 |

Vertical concentric flues Ø 60/100mm

Multifit flue group A

| Item description | Colour | Specification | Key and OD dimensions | Sales code |
|--|--------|---------------|-----------------------|------------|
| 13 Vertical flue terminal | Black | | 100mm | 5118576 |
| 3 1m flue extension inc. fixing screws | White | 1000mm | 100mm | 720648801 |
| 4 93° flue bend inc. fixing screws | White | 93° | 100mm | 720648401 |
| 5 135° flue bend inc. fixing screws (pair) | White | 135° | 100mm | 720647901 |



See page 84 for full list of flue accessories.



Key features

| |
|--|
| Output: 28kW |
| Compact size |
| 26kg lift weight |
| Simple hanging bracket |
| Modular fan gas air unit |
| Rigid filling link |
| Optional stand off frame |
| Industry leading choice of flue lengths, bends and accessories |
| Vertical packaging |
| Opentherm interface |

Benefits

| |
|--|
| Suitable for most properties |
| Can be installed in a 290mm deep cupboard |
| Easier to manoeuvre |
| For easy installation |
| For easy maintenance |
| For a neater finish |
| Neater installations for hidden pipework |
| For versatile siting and easy replacement |
| Easy to transport and unpack |
| Compatible with Baxi uSense Smart Wired Thermostat |

*Subject to registration and an annual service. Terms and conditions apply. Visit baxi.co.uk/warranty



Baxi 400 Combi LPG

The Baxi 400 LPG is a high efficiency boiler; simple to use and provides plenty of heating and hot water. The boiler has a rigid filling loop for a neater finish and has the option to be operated using a smart phone or tablet. The reliable Baxi technology is backed by a five year parts and labour warranty* for extra peace of mind.

Accessories and controls

The following accessories are compatible with the Baxi 400 Combi LPG



Baxi IFOS (In Flue Outdoor Sensor)
See page 83 for options.



7649277
Baxi uSense smart thermostat



7658276
Baxi plug-in 24 hr single channel mechanical timer



7658523
Baxi plug-in 7 day single channel digital timer



7658789
Baxi plug-in receiver 7 day RF digital single channel programmable room thermostat



7212438
Baxi single channel wired programmable room thermostat



7212444
Baxi single channel wired timer



720971601
Baxi room thermostat



720030501
Baxi combi wireless 7 Day programmable room stat

Technical specifications

HOW WE MAKE IT EASY

Wall mounted bracket for quick and simple installation.



Boiler dimensions

| Width [A] | Height [B] | Depth [C] |
|-----------|------------|-----------|
| 395mm | 700mm | 279mm |

Service clearances

| Side [D] | Upper [E] | Lower [F] | Front [G] |
|----------|-----------|-----------|--|
| 5mm* | 178mm* | 200mm* | 6mm in operation*, (* 450mm for servicing purposes) |

*These are the minimum recommended dimensions.
Greater clearance will aid installation and maintenance.



What's in the box?



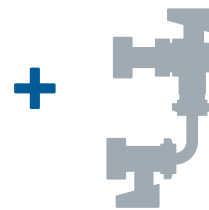
Baxi 400 Combi LPG boiler



Wall mounted bracket



Literature and fitting pack



Filling loop



Copper pipe tails

Technical details

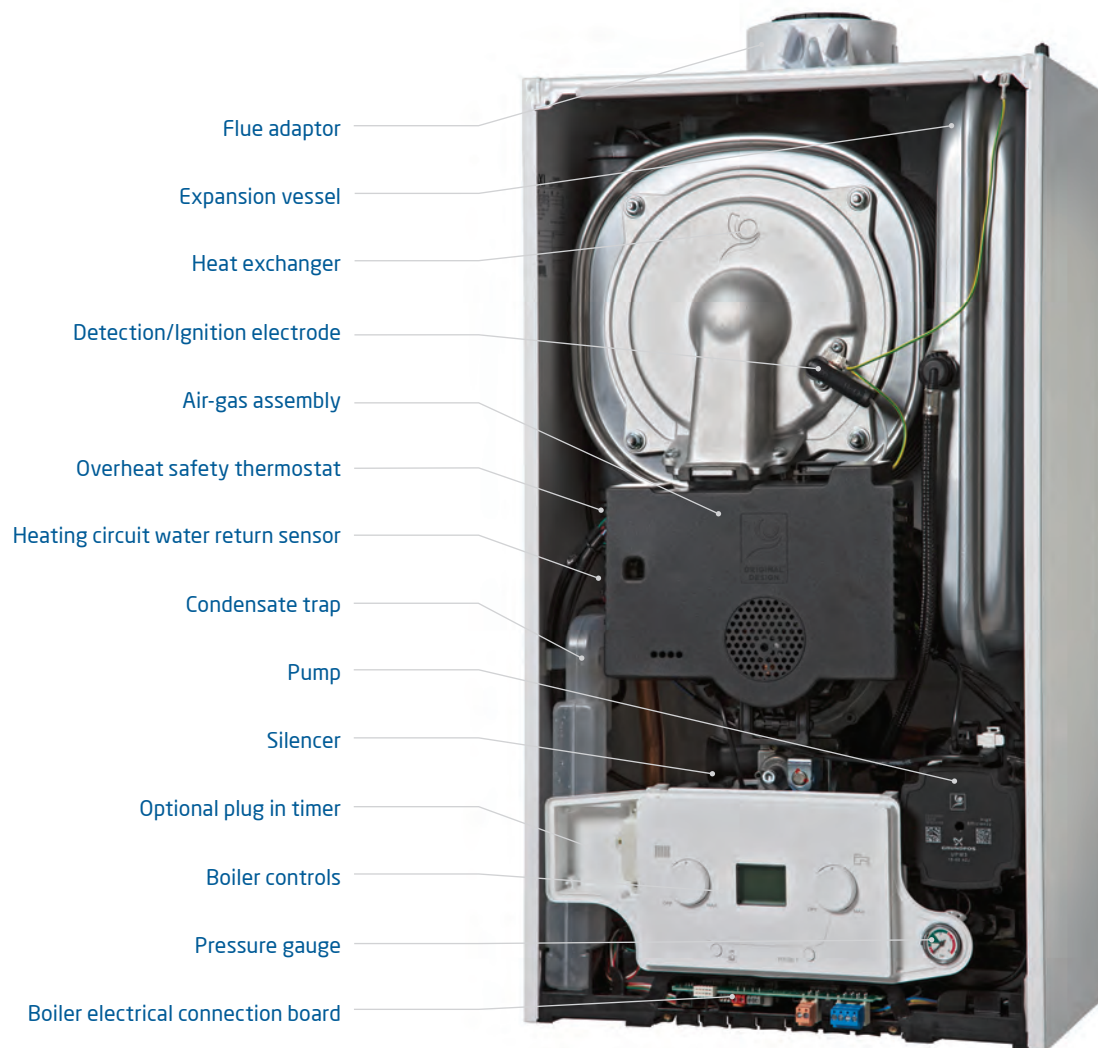
Baxi 400 Combi

28 Combi LPG

| | | |
|---|-----------------------------|-------------|
| Sales code | Boiler only | 7676760 |
| Accessories and controls | | |
| Concealed user controls | | X |
| Operating mode selector switch with reset | | ✓ |
| User adjustable DHW temperature | Range - 35°C to 60°C | ✓ |
| User adjustable CH temperature | Range - 25°C to 80°C | ✓ |
| Temp/status/fault diagnosis display | | LCD display |
| Integral 24 hr electro-mechanical timer (247206) | | Optional |
| Plug-in 24 hr mechanical timer combi (7658276) | | Optional |
| Plug-in 7 day digital timer combi (7658523) | | Optional |
| Plug-in receiver 24 hr RF programmable mechanical room thermostat-combi (7658781) | | Optional |
| Plug-in receiver 7 day RF digital programmable mechanical room thermostat-combi (7658789) | | Optional |
| Single channel 7 day wired programmable room thermostat-combi (7212438) | | Optional |
| Single channel wired timer (7212444) | | Optional |
| Room thermostat (720971601) | | Optional |
| Baxi 200 and 400 stand off kit (7659335) | | Optional |
| Baxi IFOS (7683084) | | Optional |
| ErP Product Information | | |
| Seasonal Space Heating Energy Efficiency | % | 93 |
| NOx | mg/kWh | 40 |
| Sound power level, indoors | LWA dB | 50 |
| Space heating efficiency class | | A |
| Water heating declared load profile | | XL |
| Water heating efficiency class | | A |
| Heat input CH | kW (Max) Gross (QnHs) | 27.42 |
| | kW (Min) Gross (QnHs) | 5.44 |
| Heat output CH (non condensing) factory setting | kW (Max) (Pn) | 20 |
| | kW (Min) (Pn) | 4.8 |
| Heat output CH (condensing) factory setting | kW (Max) (Pnc) | 21.8 |
| | kW (Min) (Pnc) | 5.2 |
| Gas | | |
| Gas supply connection | (mm) | 22 |
| Inlet supply pressure (natural gas) | mbar (nominal) | 20 |
| Maximum Gas Rate (nat Gas after 10 mins) | m³/hr | 3.06 |
| SAP 2009 annual efficiency (PCDB / SEDBUK) | % | 89 |
| NOx class | | 6 |
| Mechanical and hydraulic | | |
| Heat input domestic hot water (DHW) | kW max gross (QnWHs) | 32.1 |
| Heat output domestic hot water | kW max | 28 |
| Maximum DHW flow rate (Delta T @ 35°C max) | l/min | 11.5 |
| Minimum DHW flow rate required | l/min | 2 |
| Minimum operating DHW pressure required | bar | 0.15 |
| Maximum DHW system pressure | bar | 8 |
| Safety discharge pressure | bar | 3 |
| Compartment ventilation required | | X |
| Flow/return pipe size | (mm) | 22 |
| Filling loop supplied | | ✓ |
| Integral expansion vessel | Size (litres) | 7 |
| CH system inhibitor required | | ✓ |
| Condensate discharge pipe size | (mm) | 21.5 |
| Electrical | | |
| Electrical supply | Volts/Hz | 230V/50Hz |
| Permanent live required | | ✓ |
| Electrical cable required | core | 3 x 0.75 |
| Power consumption when firing | Watts | 94 |
| External fuse rating | Amps | 3 |
| Internal fuse rating - connection board | Amps | 0.5 |
| Internal fuse rating - Main PCB board | Amps | 1.6 |
| Boiler IP rating (electrical protection) without integral timer fitted | Approval Category | IPX5D |
| Circulating pump exercise feature | | ✓ |
| Pump overrun | | ✓ |
| Integral 'boiler only' frost thermostat | | ✓ |
| Concentric flue system | | |
| Standard telescopic concentric flue | Length in mm | 315-500 |
| Horizontal and Vertical concentric (60/100mm) | Max equivalent length (m) | 10 |
| | Reduction Per 135° bend (m) | 0.5 |
| | Reduction Per 93° bend (m) | 1 |
| Horizontal and Vertical concentric (80/125mm) | Max equivalent length (m) | 20 |
| Weights | | |
| Installer lift weight (boiler) | Max (kg) | 26 |
| Gross packaged boiler weight | (kg) | 30.5 |

What's inside the boiler?

Baxi 400 Combi LPG



HOW WE MAKE IT EASY

**Telescopic horizontal
flue option is quick
and easy to fit.**

Flues

Horizontal concentric flues Ø 60/100mm

Multifit flue group A

| Item description | Colour | Specification | Key and OD dimensions | Sales code |
|---|---------------------------|---------------|-----------------------|------------|
| 1 Horizontal telescopic flue inc. low profile elbow and fixing screws | White pipe/white terminal | 315mm - 500mm | 100mm | 720599401 |
| 2 Horizontal telescopic flue inc. low profile elbow and fixing screws | White pipe/black terminal | 315mm - 500mm | 100mm | 720598701 |
| 3 1m flue extension inc. fixing screws and bracket | White | 1000mm | 100mm | 720648801 |
| 4 93° flue bend inc. fixing screws | White | 93° | 100mm | 720648401 |
| 5 135° flue bend inc. fixing screws (pair) | White | 135° | 100mm | 720647901 |
| 6 Standard horizontal flue inc. low profile elbow and fixing screws | White pipe/black terminal | 685mm | 100mm | 7222019 |

Plume displacement kits Ø 60/100mm

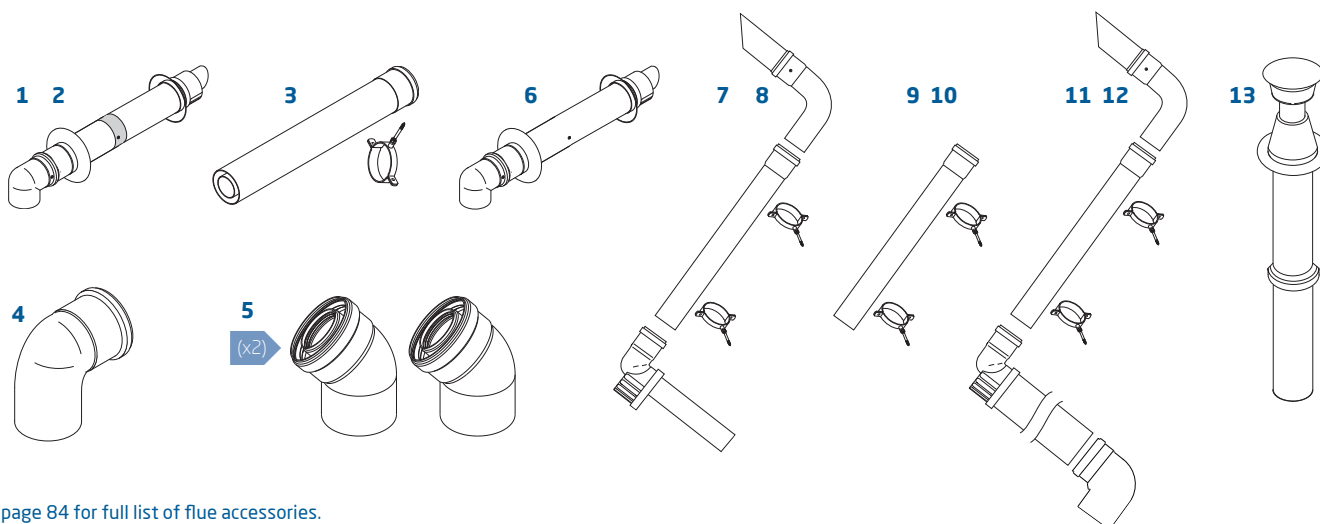
Multifit flue group A

| Item description | Colour | Specification | Key and OD dimensions | Sales code |
|---|--------|---------------|-----------------------|------------|
| 7 Plume displacement terminal kit for telescopic flue inc 1m extension and brackets | White | | 60mm | 720627001 |
| 8 Plume displacement terminal kit for telescopic flue inc 1m extension and brackets | Black | | 60mm | 720622901 |
| 9 Plume displacement kit extension and brackets | White | 1000mm | 60mm | 720643401 |
| 10 Plume displacement kit extension and brackets | Black | 1000mm | 60mm | 720643301 |
| 11 Plume displacement terminal kit inc. 1m extension and brackets | White | | 60mm | 7225717 |
| 12 Plume displacement terminal kit inc. 1m extension and brackets | Black | | 60mm | 7225716 |

Vertical concentric flues Ø 60/100mm

Multifit flue group A

| Item description | Colour | Specification | Key and OD dimensions | Sales code |
|--|--------|---------------|-----------------------|------------|
| 13 Vertical flue terminal | Black | | 100mm | 5118576 |
| 3 1m flue extension inc. fixing screws | White | 1000mm | 100mm | 720648801 |
| 4 93° flue bend inc. fixing screws | White | 93° | 100mm | 720648401 |
| 5 135° flue bend inc. fixing screws (pair) | White | 135° | 100mm | 720647901 |



See page 84 for full list of flue accessories.



3yr
WARRANTY*

COMPACT
SIZE

OPTIONAL
STAND
OFF
FRAME

SIMPLE
HANGING
BRACKET

Key features

Outputs: 24kW and 28kW

Compact size

26kg lift weight

Simple hanging bracket

Modular fan gas air unit

Easily accessible electrical connections

Optional stand off frame

Industry leading choice of flue lengths, bends and accessories

Vertical packaging

Opentherm interface

Benefits

To suit most property sizes

Can be installed in a 290mm deep cupboard

Easier to manoeuvre

For easy installation

For easy maintenance

For easy installation

Neater installations for hidden pipework

For versatile siting and easy replacement

Easy to transport and unpack

Compatible with Baxi uSense Smart Wired Thermostat

*Subject to registration and an annual service. Terms and conditions apply. Visit baxi.co.uk/warranty



I really like the way this boiler is put together. Everything lined up really well and I had it on the wall in no time. It is light and easy to handle, and provided plenty of hot water very quickly.

Andrew Lynch

A Lynch Plumbing and Heating Ltd, Chorley

Baxi 200 Combi

The Baxi 200 is a high efficiency boiler; simple to use and provides plenty of heating and hot water. The boiler is compact and small enough to fit in a kitchen cupboard and has the option to be operated using a smart phone or tablet. The reliable Baxi technology is backed by a three year parts and labour warranty* for peace of mind.

Accessories and controls

The following accessories are compatible with the Baxi 200 Combi



Baxi IFOS (In Flue Outdoor Sensor)
See page 83 for options.



7649277
Baxi uSense smart thermostat



7658276
Baxi plug-in 24 hr single channel mechanical timer



7658523
Baxi plug-in 7 day single channel digital timer



7658781
Baxi plug-in receiver 24 hr single channel programmable mechanical room thermostat



7658789
Baxi plug-in receiver 7 day RF digital single channel programmable room thermostat



7212438
Baxi single channel wired programmable room thermostat



7212444
Baxi single channel wired timer



720971601
Baxi room thermostat

Technical specifications

HOW WE MAKE IT EASY

Easy to manoeuvre at only 26kg.



Boiler dimensions

| Width [A] | Height [B] | Depth [C] |
|-----------|------------|-----------|
| 395mm | 700mm | 279mm |

Service clearances

| Side [D] | Upper [E] | Lower [F] | Front [G] |
|----------|-----------|-----------|--|
| 5mm* | 178mm* | 200mm* | 6mm in operation*, (* 450mm for servicing purposes) |

*These are the minimum recommended dimensions. Greater clearance will aid installation and maintenance.



What's in the box?



Baxi 200 Combi boiler



Wall mounted bracket



Literature and fitting pack



Copper pipe tails

CH 22mm
 DHW 15mm
 Ga 15mm
 Condense 21.5mm
 Safety discharge pipe connection 15mm

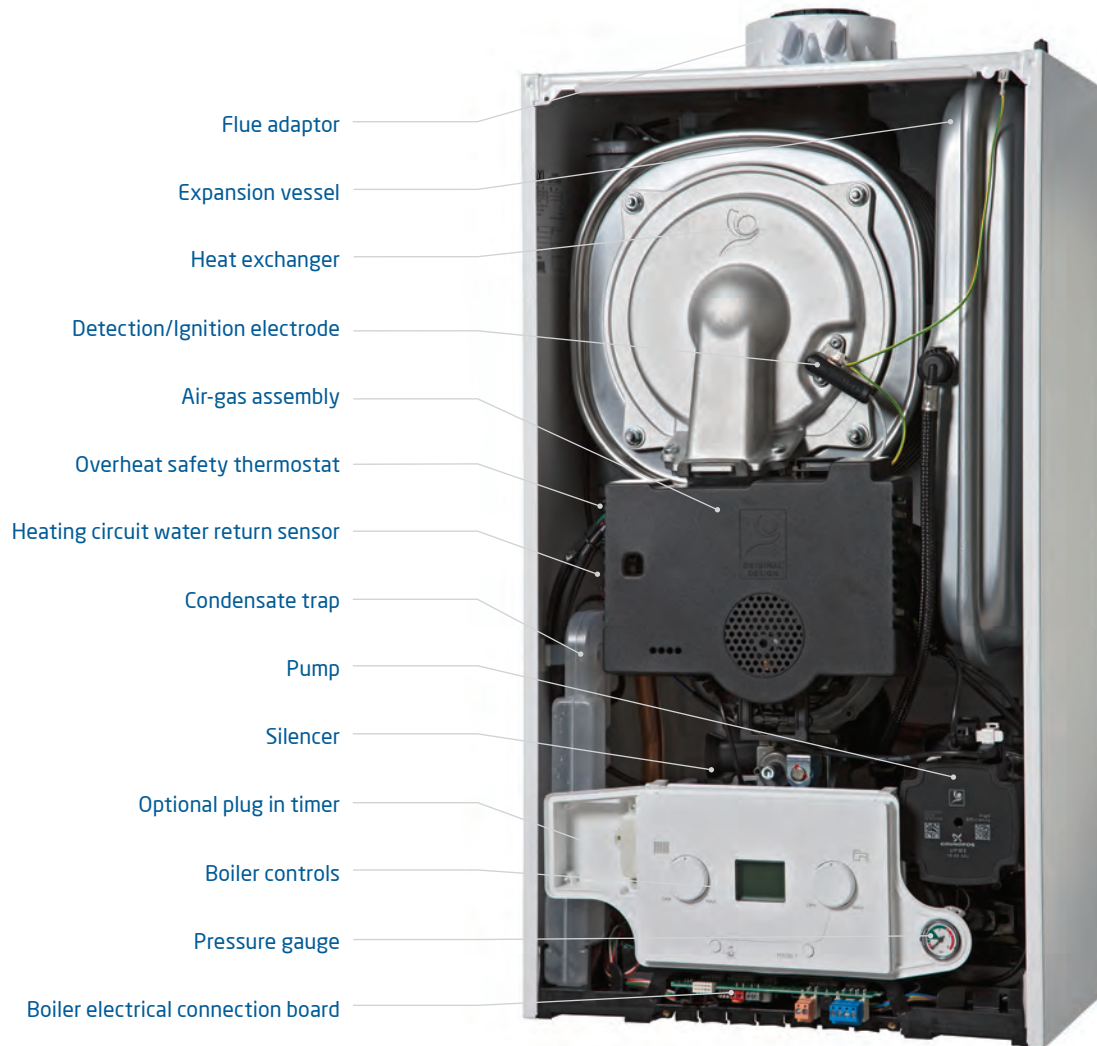
Technical details

Baxi 200 Combi

| | | 24 Combi | 28 Combi |
|---|-----------------------------|-------------|-------------|
| Sales code | Boiler only | 7656160 | 7656161 |
| Accessories and controls | | | |
| Concealed user controls | | x | x |
| Operating mode selector switch with reset | | ✓ | ✓ |
| User adjustable DHW temperature | Range - 35°C to 60°C | ✓ | ✓ |
| User adjustable CH temperature | Range - 25°C to 80°C | ✓ | ✓ |
| Temp/status/fault diagnosis display | | LCD display | LCD display |
| Integral 24 hr electro-mechanical timer (247206) | | Optional | Optional |
| Plug-in 24 hr mechanical timer combi (7658276) | | Optional | Optional |
| Plug-in 7 day digital timer combi (7658523) | | Optional | Optional |
| Plug-in receiver 24 hr RF programmable mechanical room thermostat-combi (7658781) | | Optional | Optional |
| Plug-in receiver 7 day RF digital programmable mechanical room thermostat-combi (7658789) | | Optional | Optional |
| Single channel 7 day wired programmable room thermostat-combi (7212438) | | Optional | Optional |
| Single channel wired timer (7212444) | | Optional | Optional |
| Room thermostat (720971601) | | Optional | Optional |
| Baxi 200 and 400 stand off kit (7659335) | | Optional | Optional |
| Multifit filling loop (248221) | | Optional | Optional |
| Multifit Rigid Filling Link (7689034) | | Optional | Optional |
| Baxi IFOS (7683084) | | Optional | Optional |
| Baxi Easy-Fill (7665482) | | Optional | Optional |
| ErP Product Information | | | |
| Seasonal Space Heating Energy Efficiency | % | 93 | 93 |
| NOx | mg/kWh | 38 | 40 |
| Sound power level, indoors | LWA dB | 48 | 50 |
| Space heating efficiency class | | A | A |
| Water heating declared load profile | | XL | XL |
| Water heating efficiency class | | A | A |
| Heat input CH | kW (Max) Gross (QnHs) | 22.87 | 27.42 |
| | kW (Min) Gross (QnHs) | 5.44 | 5.44 |
| | kW (Max) (Pn) | 20 | 20 |
| Heat output CH (non condensing) factory setting | kW (Min) (Pn) | 4.8 | 4.8 |
| | kW (Max) (Pnc) | 21.8 | 21.8 |
| | kW (Min) (Pnc) | 5.2 | 5.2 |
| Gas | | | |
| Gas supply connection | (mm) | 22 | 22 |
| Inlet supply pressure (natural gas) | mbar (nominal) | 20 | 20 |
| Maximum Gas Rate (nat Gas after 10 mins) | m³/hr | 2.61 | 3.06 |
| SAP 2009 annual efficiency (PCDB / SEDBUK) | % | 89 | 89 |
| NOx class | | 6 | 6 |
| Mechanical and hydraulic | | | |
| Heat input domestic hot water (DHW) | kW max gross (QnHs) | 27.4 | 32.1 |
| Heat output domestic hot water | kW max | 24 | 28 |
| Maximum DHW flow rate (Delta T @ 35°C max) | l/min | 9.8 | 11.5 |
| Minimum DHW flow rate required | l/min | 2 | 2 |
| Minimum operating DHW pressure required | bar | 0.15 | 0.15 |
| Maximum DHW system pressure | bar | 8 | 8 |
| Safety discharge pressure | bar | 3 | 3 |
| Compartment ventilation required | | x | x |
| Flow/return pipe size | (mm) | 22 | 22 |
| Temporary filling loop supplied | | x | x |
| Integral expansion vessel | Size (litres) | 7 | 7 |
| CH system inhibitor required | | ✓ | ✓ |
| Condensate discharge pipe size | (mm) | 21.5 | 21.5 |
| Electrical | | | |
| Electrical supply | Volts/Hz | 230V/50Hz | 230V/50Hz |
| Permanent live required | | ✓ | ✓ |
| Electrical cable required | core | 3 x 0.75 | 3 x 0.75 |
| Power consumption when firing | Watts | 84 | 94 |
| External fuse rating | Amps | 3 | 3 |
| Internal fuse rating - connection board | Amps | 0.5 | 0.5 |
| Internal fuse rating - Main PCB board | Amps | 1.6 | 1.6 |
| Boiler IP rating (electrical protection) without integral timer fitted | Approval Category | IPX5D | IPX5D |
| Circulating pump exercise feature | | ✓ | ✓ |
| Pump overrun | | ✓ | ✓ |
| Integral 'boiler only' frost thermostat | | ✓ | ✓ |
| Concentric flue system | | | |
| Standard telescopic concentric flue | Length in mm | 315-500 | 315-500 |
| Horizontal and Vertical concentric (60/100mm) | Max equivalent length (m) | 10 | 10 |
| | Reduction Per 135° bend (m) | 0.5 | 0.5 |
| | Reduction Per 93° bend (m) | 1 | 1 |
| | Max equivalent length (m) | 20 | 20 |
| Horizontal and Vertical concentric (80/125mm) | Max equivalent length (m) | 20 | 20 |
| Weights | | | |
| Installer lift weight (boiler) | Max (kg) | 26 | 26 |
| Gross packaged boiler weight | (kg) | 30 | 30 |

What's inside the boiler?

Baxi 200 Combi



HOW WE MAKE IT EASY

**An industry-leading
choice of flues.**

Flues

Horizontal concentric flues Ø 60/100mm

Multifit flue group A

| Item description | Colour | Specification | Key and OD dimensions | Sales code |
|---|---------------------------|---------------|-----------------------|------------|
| 1 Horizontal telescopic flue inc. low profile elbow and fixing screws | White pipe/white terminal | 315mm - 500mm | 100mm | 720599401 |
| 2 Horizontal telescopic flue inc. low profile elbow and fixing screws | White pipe/black terminal | 315mm - 500mm | 100mm | 720598701 |
| 3 1m flue extension inc. fixing screws and bracket | White | 1000mm | 100mm | 720648801 |
| 4 93° flue bend inc. fixing screws | White | 93° | 100mm | 720648401 |
| 5 135° flue bend inc. fixing screws (pair) | White | 135° | 100mm | 720647901 |
| 6 Standard horizontal flue inc. low profile elbow and fixing screws | White pipe/black terminal | 685mm | 100mm | 7222019 |

Plume displacement kits Ø 60/100mm

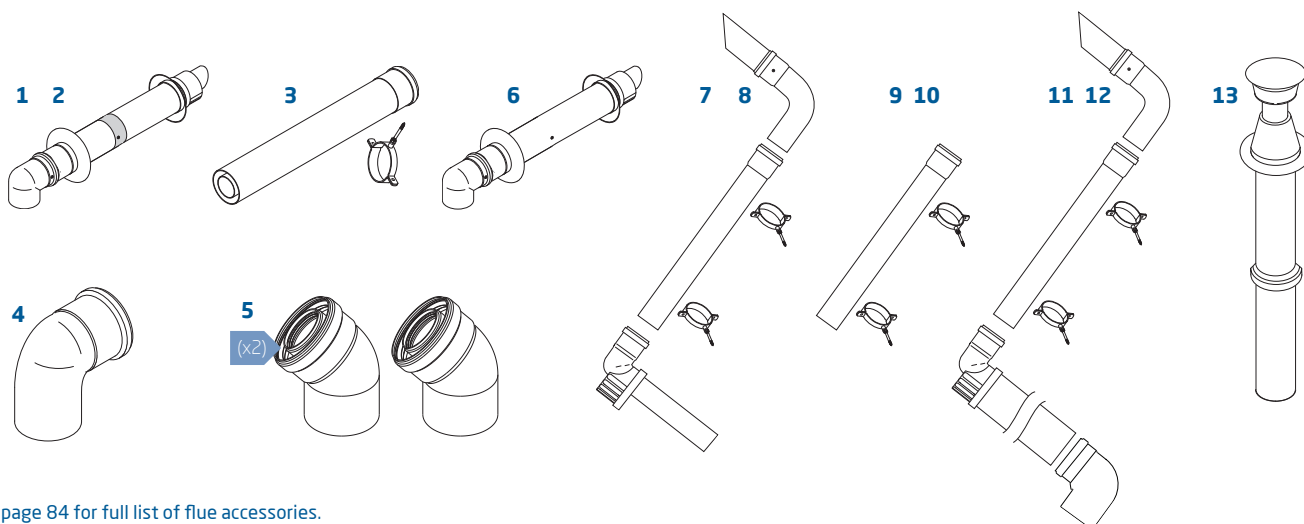
Multifit flue group A

| Item description | Colour | Specification | Key and OD dimensions | Sales code |
|---|--------|---------------|-----------------------|------------|
| 7 Plume displacement terminal kit for telescopic flue inc 1m extension and brackets | White | | 60mm | 720627001 |
| 8 Plume displacement terminal kit for telescopic flue inc 1m extension and brackets | Black | | 60mm | 720622901 |
| 9 Plume displacement kit extension and brackets | White | 1000mm | 60mm | 720643401 |
| 10 Plume displacement kit extension and brackets | Black | 1000mm | 60mm | 720643301 |
| 11 Plume displacement terminal kit inc. 1m extension and brackets | White | | 60mm | 7225717 |
| 12 Plume displacement terminal kit inc. 1m extension and brackets | Black | | 60mm | 7225716 |

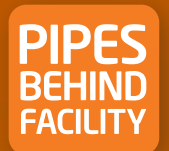
Vertical concentric flues Ø 60/100mm

Multifit flue group A

| Item description | Colour | Specification | Key and OD dimensions | Sales code |
|--|--------|---------------|-----------------------|------------|
| 13 Vertical flue terminal | Black | | 100mm | 5118576 |
| 3 1m flue extension inc. fixing screws | White | 1000mm | 100mm | 720648801 |
| 4 93° flue bend inc. fixing screws | White | 93° | 100mm | 720648401 |
| 5 135° flue bend inc. fixing screws (pair) | White | 135° | 100mm | 720647901 |



See page 84 for full list of flue accessories.



Feature

| |
|--|
| Outputs of 18kW and 24kW |
| Compact Adey Magnaclean Micro2 magnetic system filter included |
| Compact cupboard fit |
| Simple hanging bracket |
| Pipes behind facility within the boiler casing |
| Fully modulating and highly efficient |
| Top central flue |
| Brass hydraulics block |
| Front access to all components |
| Compatible with Multifit flue kits |

Benefit

| |
|---|
| An output and model for most sizes of property |
| Protects the heating system and boiler |
| Can be installed in a 290mm deep cupboard |
| Easy to install giving greater flexibility of pipework connections |
| Save time, space and money by piping behind within the footprint of the boiler |
| Boiler intelligently uses the right amount of fuel to meet the set central heating temperatures, saving money on fuel bills |
| Easier to replace old boiler, saving time |
| Trusted and robust |
| Saves time when servicing |
| Industry leading choice of bends, lengths and accessories |

*Subject to registration and an annual service. Terms and conditions apply. Visit baxi.co.uk/warranty



Baxi 800 System

The Baxi 800 System has a 10 year parts and labour warranty* and includes a compact Adey Magnaclean Micro2 magnetic system filter to protect the boiler and heating system.

The boiler is small enough to fit into a 290mm deep cupboard, has a built in pipes behind facility within the boiler casing and brass hydraulics. It is compatible with Megaflo Eco cylinders, making it the perfect choice for homes with high demand for hot water.

Accessories and controls

The following accessories are compatible with the Baxi 800 System



Baxi IFOS System
(In Flue Outdoor
Sensor)
*See page 83
for options.*



7211473
Potterton EP
series 2



7212443
Baxi twin channel
wired programmer



720971601
Baxi wired room
thermostat



Megaflo Eco cylinder
*See www.heatraesadia.com
for range of cylinders.*

Technical specifications

HOW WE MAKE IT EASY

Easy to manoeuvre at only 28.1kg.



Boiler dimensions

| Width [A] | Height [B] | Depth [C] |
|-----------|------------|-----------|
| 390mm | 700mm | 285mm |

Service clearances

| Side [D] | Upper [E] | Lower [F] | Front [G] |
|----------|-----------|-----------|--|
| 5mm* | 178mm* | 200mm* | 5mm in operation*, (* 450mm for servicing purposes) |

*These are the minimum recommended dimensions. Greater clearance will aid installation and maintenance.



What's in the box?



Baxi 800 System boiler



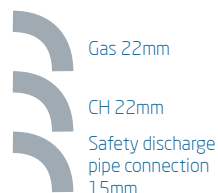
Wall mounted bracket



Adey Magnaclean Micro2 magnetic system filter



Literature and fitting pack



Copper pipe tails

Gas 22mm

CH 22mm

Safety discharge pipe connection 15mm

Technical details

Baxi 800 System

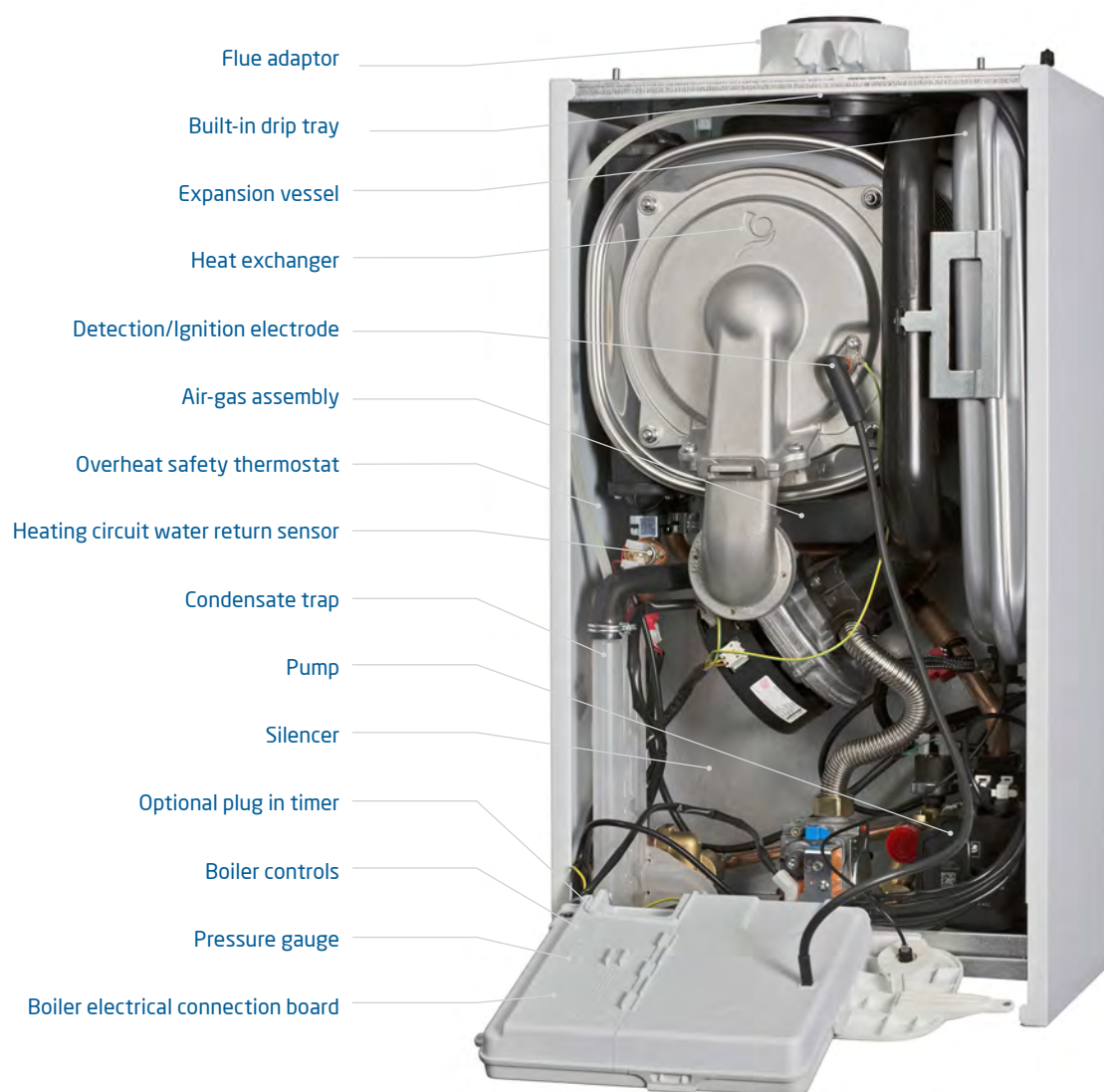
818 System

824 System

| | | | |
|---|------------------------------|-------------------|-------------------|
| Sales code | Boiler only | 7728645 | 7728289 |
| Controls and accessories | | | |
| User adjustable DHW temperature | Range - 30°C to 60°C | N/A | N/A |
| User adjustable CH temperature | Range - 25°C to 80°C | ✓ | ✓ |
| Temp/status/fault diagnosis display | | LCD Display | LCD Display |
| Wired Room Thermostat (optional accessory) | 720971601 | Optional | Optional |
| Multifit Twin Channel Wired Programmer (optional accessory) | 7212443 | Optional | Optional |
| Multifit IFOS weather compensation (optional accessory) | 7724181 | Optional | Optional |
| Multifit IFOS Extension (optional accessory) | 7724260 | Optional | Optional |
| Multifit IFOS System (optional accessory) | 7729979 | Optional | Optional |
| Ridge Tile IFOS (optional accessory) | 7729943 | Optional | Optional |
| Pre-Plumb Jig (optional accessory) | 7682545 | Optional | Optional |
| Rear Pipework Kit (optional accessory) | 7682790 | Optional | Optional |
| Remote Secondary PRV kit (optional accessory) | 5121379 | Optional | Optional |
| Gas | | | |
| User adjustable DHW temperature | | ✓ | ✓ |
| Inlet supply pressure (natural gas) | | N/A | N/A |
| | mbar (nominal) | 20 | 20 |
| Maximum Gas Rate (G20) Qmax | m³/hr | 1.96 | 2.61 |
| NOx | mg/kWh | 30 | 28 |
| NOx Class | | 6 | 6 |
| Heat input CH | kW (max) Gross (QnHs) | 20.6 | 27.4 |
| | kW (min) Gross (QnHs) | 5.2 | 5.2 |
| Heat Output CH (non-condensing) | kW (Max) (Pn) | 18 | 24 |
| | kW (Min) (Pn) | 4.5 | 4.5 |
| Heat Output CH (condensing) | kW (Max) (Pnc) | 19.4 | 25.8 |
| | kW (Min) (Pnc) | 4.9 | 4.9 |
| Heat Input Domestic Hot Water (DHW) | kW max gross (QnWHs) | N/A | N/A |
| Heat Output Domestic Hot Water (DHW) | kW max | N/A | N/A |
| ErP Product Information | | | |
| Seasonal Space Heating Energy Efficiency | | 93% | 93% |
| Sound Power Levels, indoors | lWA dB | 48 | 48 |
| Space Heating Efficiency Class | | A | A |
| Water Heating Declared Load Profile | | N/A | N/A |
| Water Heating Efficiency class | | N/A | N/A |
| Electrical | | | |
| Electrical Supply | Volts / Hz | 230 / 50 | 230 / 50 |
| Permanent Live Required | | ✓ | ✓ |
| Electrical Cable Supplied | (0.75mm heat resistant flex) | ✗ | ✗ |
| Power consumption when firing | Watts | 70 | 100 |
| External fuse rating | Amps | 3 | 3 |
| Internal fuse rating | Amps | F2A H250V | F2A H250V |
| Boiler IP rating (electrical protection) without integral timer fixed | Approval category | IPX5D | IPX5D |
| Circulating pump exercise feature | | ✓ | ✓ |
| Pump Overrun | | ✓ | ✓ |
| Integral 'boiler only' Frost Thermostat | | ✓ | ✓ |
| Mechanical | | | |
| Hanging Bracket | | ✓ | ✓ |
| Isolating valves with pre-formed copper tails | | ✓ | ✓ |
| Gas supply Connection | (mm) | 22 | 22 |
| Central Heating Connections | (mm) | 22 | 22 |
| Domestic Hot Water Connections | (mm) | N/A | N/A |
| Condense Discharge Pipe Connections | (mm) | 21.5 | 21.5 |
| Safety Discharge Pipe Connections | (mm) | 15 | 15 |
| Hydraulic | | | |
| Maximum DHW flow rate (Delta T @ 35°C rise) | l/min | N/A | N/A |
| Minimum DHW flow rate required | l/min | N/A | N/A |
| Minimum Operating DHW pressure required | bar | 0.5 | 0.5 |
| Maximum DHW System Pressure | bar | N/A | N/A |
| Safety Discharge Pressure | bar | 3 | 3 |
| Compartment Ventilation Required | | ✗ | ✗ |
| Integral Expansion Vessel | Size (litres) | 7 | ✗ |
| Maximum Capacity of CH System | Litres | 100 | 100 |
| Integral Automatic Bypass | | N/A | N/A |
| CH System Inhibitor Required | | ✓ | ✓ |
| Concentric flue systems | | | |
| Concentric Flue Diameters | (mm) | 60/100 and 80/125 | 60/100 and 80/125 |
| Standard telescopic horizontal flue (60/100) | (mm) | 315 - 500 | 315 - 500 |
| Standard horizontal flue kit (60/100) | (mm) | 685 | 685 |
| Max equiv length horizontal / vertical (60/100) | m | 10 | 10 |
| Max equiv length horizontal / vertical (80/125) | m | 20 | 20 |
| Equivalent length per 135° bend | m | 0.5 | 0.5 |
| Equivalent length per 93° bend | m | 1 | 1 |
| Weights | | | |
| Installer Lift Weight (boiler) | (kg) | 27.7 | 27.7 |
| Gross packaged boiler weight | (kg) | 33 | 33 |

What's inside the boiler?

Baxi 800 System



HOW WE MAKE IT EASY

**An industry-leading
choice of flues.**

Flues

Horizontal concentric flues Ø 60/100mm

Multifit flue group A

| Item description | Colour | Specification | Key and OD dimensions | Sales code |
|---|---------------------------|---------------|-----------------------|------------|
| 1 Horizontal telescopic flue inc. low profile elbow and fixing screws | White pipe/white terminal | 315mm - 500mm | 100mm | 720599401 |
| 2 Horizontal telescopic flue inc. low profile elbow and fixing screws | White pipe/black terminal | 315mm - 500mm | 100mm | 720598701 |
| 3 1m flue extension inc. fixing screws | White | 1000mm | 100mm | 720648801 |
| 4 93° flue bend inc. fixing screws | White | 93° | 100mm | 720648401 |
| 5 135° flue bend inc. fixing screws (pair) | White | 135° | 100mm | 720647901 |
| 6 Standard horizontal flue inc. low profile elbow and fixing screws | White pipe/black terminal | 685mm | 100mm | 7222019 |

Plume displacement kits Ø 60/100mm

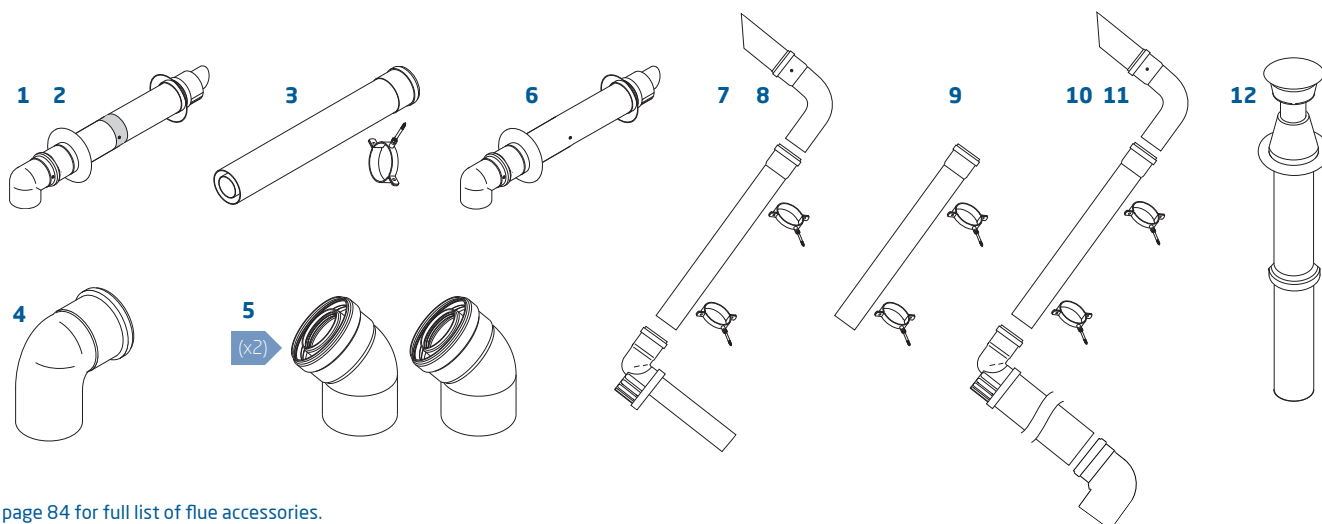
Multifit flue group A

| Item description | Colour | Specification | Key and OD dimensions | Sales code |
|---|--------|---------------|-----------------------|------------|
| 7 Plume displacement terminal kit for telescopic flue inc 1m extension and brackets | White | | 60mm | 720627001 |
| 8 Plume displacement terminal kit for telescopic flue inc 1m extension and brackets | Black | | 60mm | 720622901 |
| 9 Plume displacement kit extension and brackets | White | 1000mm | 60mm | 720643401 |
| 10 Plume displacement terminal kit inc. 1m extension and brackets | White | | 60mm | 7225717 |
| 11 Plume displacement terminal kit inc. 1m extension and brackets | Black | | 60mm | 7225716 |

Vertical concentric flues Ø 60/100mm

Multifit flue group A

| Item description | Colour | Specification | Key and OD dimensions | Sales code |
|--|--------|---------------|-----------------------|------------|
| 12 Vertical flue terminal | Black | | 100mm | 5118576 |
| 3 1m flue extension inc. fixing screws | White | 1000mm | 100mm | 720648801 |
| 4 93° flue bend inc. fixing screws | White | 93° | 100mm | 720648401 |
| 5 135° flue bend inc. fixing screws (pair) | White | 135° | 100mm | 720647901 |



See page 84 for full list of flue accessories.



Feature

Outputs of 15kW, 18kW and 24kW

Compact cupboard fit

Simple hanging bracket

Pipes behind facility within the boiler casing

Fully modulating and highly efficient

Top central flue

Brass hydraulics block

Front access to all components

Compatible with Multifit flue kits

Extensive flue options up to 20 metres

Benefit

An output and model for most sizes of property

Can be installed in a 290mm deep cupboard

Easy to install giving greater flexibility of pipework connections

Save time, space and money by piping behind within the footprint of the boiler

Boiler intelligently uses the right amount of fuel to meet the set central heating temperatures, saving money on fuel bills

Easier to replace old boiler, saving time

Trusted and robust

Saves time when servicing

Industry leading choice of bends, lengths and accessories

Allowing greater flexibility of siting and easy replacement

*Subject to registration and an annual service. Terms and conditions apply. Visit baxi.co.uk/warranty



Baxi 600 System

The Baxi 600 System has a 7 year parts and labour warranty* and is small enough to fit into a 290mm deep cupboard. It has a built in pipes behind facility within the boiler casing and brass hydraulics and is compatible with Megaflo Eco cylinders, making it the perfect choice for homes with high demand for hot water.

Accessories and controls

The following accessories are compatible with the Baxi 600 System



Baxi IFOS System
(In Flue Outdoor
Sensor)
*See page 83
for options.*



7211473
Potterton EP
series 2



7212443
Baxi twin channel
wired programmer



720971601
Baxi wired room
thermostat



Megaflo Eco cylinder
*See www.heatraesadia.com
for range of cylinders.*

Technical specifications

HOW WE MAKE IT EASY

Easy to manoeuvre at only 28.1kg.



Boiler dimensions

| Width [A] | Height [B] | Depth [C] |
|-----------|------------|-----------|
| 390mm | 700mm | 285mm |

Service clearances

| Side [D] | Upper [E] | Lower [F] | Front [G] |
|----------|-----------|-----------|--|
| 5mm* | 178mm* | 200mm* | 5mm in operation*, (* 450mm for servicing purposes) |

*These are the minimum recommended dimensions.
Greater clearance will aid installation and maintenance.



What's in the box?



Baxi 600 System boiler



Wall mounted bracket



Literature and fitting pack



Copper pipe tails

Gas 22mm
CH 22mm
Safety discharge pipe connection 15mm

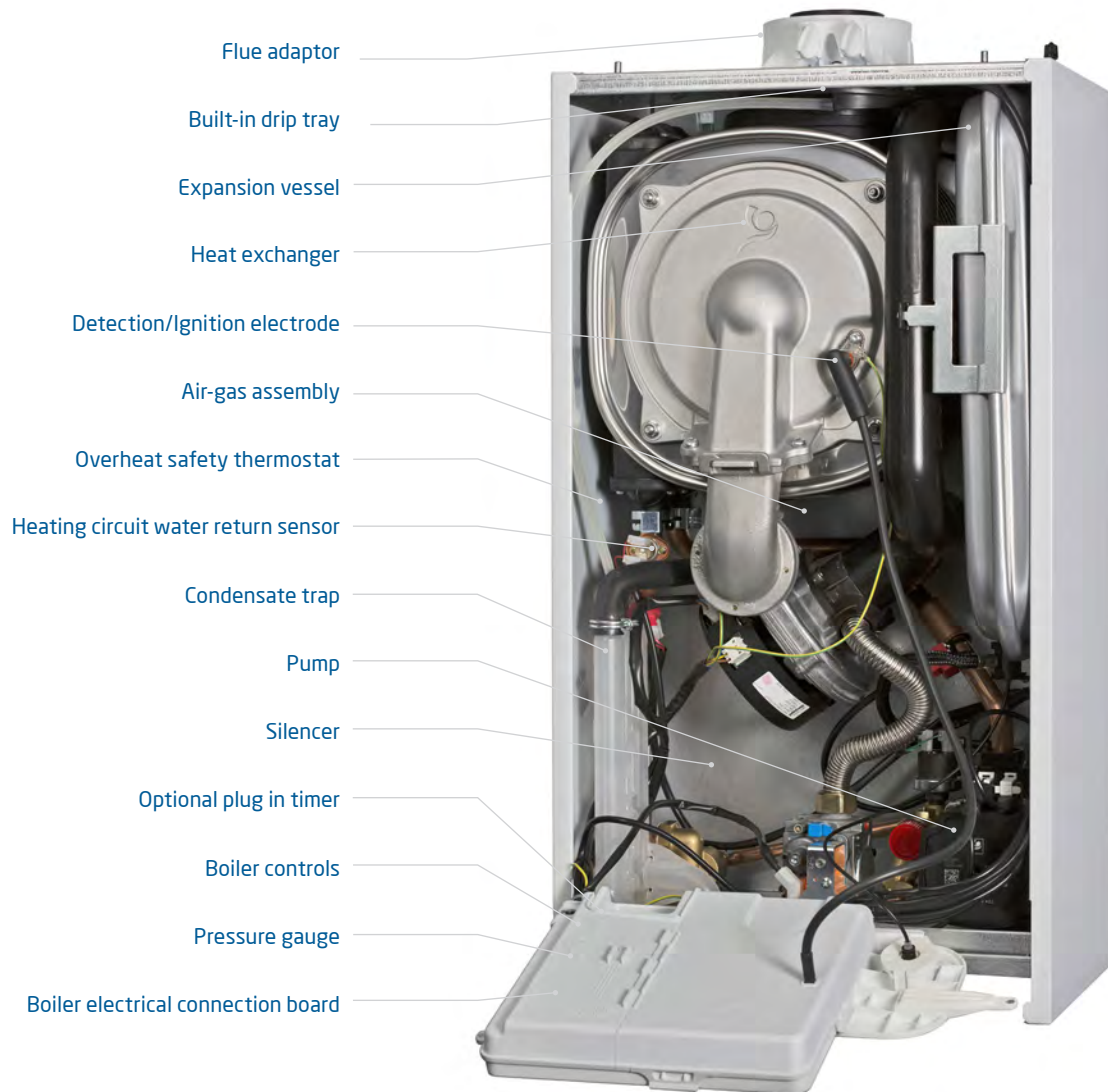
Technical details

Baxi 600 System

| | | 15 System | 18 System | 24 System |
|--|-----------------------------|-------------|-------------|-------------|
| Sales code | Boiler only | 7682196 | 7716064 | 7716061 |
| Accessories and controls | | | | |
| Concealed user controls | | ✓ | ✓ | ✓ |
| Operating mode selector switch with reset | | ✓ | ✓ | ✓ |
| User adjustable DHW temperature | Range - 35°C to 60°C | ✓ | ✓ | ✓ |
| User adjustable CH temperature | Range - 25°C to 80°C | ✓ | ✓ | ✓ |
| Temp/status/fault diagnosis display | | LCD display | LCD display | LCD display |
| Wired outdoor weather sensor & relay kit (7683087) | | Optional | Optional | Optional |
| Baxi wired room thermostat (720971601) | | Optional | Optional | Optional |
| Baxi twin channel wired programmer (7212443) | | Optional | Optional | Optional |
| Multifit rear pipework kit (7682790) | | Optional | Optional | Optional |
| Pre-plumb jig (7682545) | | Optional | Optional | Optional |
| ErP Product Information | | | | |
| Seasonal Space Heating Energy Efficiency | % | 93 | 93 | 93 |
| NOx | mg/kWh | 29.0 | 30.0 | 28.0 |
| Sound power level, indoors | LWA dB | 46 | 48 | 51 |
| Space heating efficiency class | | A | A | A |
| Heat input CH | kW (Max) Gross (QnHs) | 17.2 | 20.6 | 27.4 |
| | kW (Min) Gross (QnHs) | 5.2 | 5.2 | 5.2 |
| Heat output CH (non condensing) factory setting | kW (Max) (Pn) | 15 | 18 | 24 |
| | kW (Min) (Pn) | 4.5 | 4.5 | 4.5 |
| Heat output CH (condensing) factory setting | kW (Max) (Pnc) | 16.2 | 19.4 | 25.8 |
| | kW (Min) (Pnc) | 4.9 | 4.9 | 4.9 |
| Gas | | | | |
| Gas supply connection | (mm) | 22 | 22 | 22 |
| Inlet supply pressure (natural gas) | mbar (nominal) | 20 | 20 | 20 |
| Maximum Gas Rate (nat Gas after 10 mins) | m³/hr | 1.64 | 1.96 | 2.61 |
| SAP 2009 annual efficiency (PCDB / SEDBUK) | % | 89 | 89 | 89 |
| NOx class | | 6 | 6 | 6 |
| Mechanical and hydraulic | | | | |
| Heat input central heating (CH) | kW max gross (Qnwhs) | 17.2 | 20.6 | 27.4 |
| Safety discharge pressure | bar | 3 | 3 | 3 |
| Compartment ventilation required | | ✓ | ✓ | ✓ |
| Flow/return pipe size | (mm) | 22 | 22 | 22 |
| Temporary filling loop supplied | | ✓ | ✓ | ✓ |
| Integral expansion vessel | Size (litres) | 7 | 7 | 7 |
| CH system inhibitor required | | ✓ | ✓ | ✓ |
| Condensate discharge pipe size | (mm) | 21.5 | 21.5 | 21.5 |
| Electrical | | | | |
| Electrical supply | Volts/Hz | 230V/50Hz | 230V/50Hz | 230V/50Hz |
| Permanent live required | | ✓ | ✓ | ✓ |
| Electrical cable required | core | 3 x 0.75 | 3 x 0.75 | 3 x 0.75 |
| Power consumption when firing | Watts | 65 | 70 | 100 |
| External fuse rating | Amps | 3 | 3 | 3 |
| Internal fuse rating - connection board | Amps | F2HA250V | F2HA250V | F2HA250V |
| Internal fuse rating - Main PCB board | Amps | 1.6 | 1.6 | 1.6 |
| Boiler IP rating (electrical protection) | Approval Category | IPX5D | IPX5D | IPX5D |
| Circulating pump exercise feature | | ✓ | ✓ | ✓ |
| Pump overrun | | ✓ | ✓ | ✓ |
| Integral 'boiler only' frost thermostat | | ✓ | ✓ | ✓ |
| Concentric flue system | | | | |
| Standard telescopic concentric flue | Length in mm | 315-500 | 315-500 | 315-500 |
| Horizontal and Vertical concentric (60/100mm) | Max equivalent length (m) | 10 | 10 | 10 |
| | Reduction Per 135° bend (m) | 0.5 | 0.5 | 0.5 |
| | Reduction Per 93° bend (m) | 1 | 1 | 1 |
| | Max equivalent length (m) | 20 | 20 | 20 |
| Horizontal and Vertical concentric (80/125mm) | | | | |
| Weights | | | | |
| Installer lift weight (boiler) | Max (kg) | 28.1 | 28.1 | 28.1 |
| Gross packaged boiler weight | (kg) | 30.6 | 30.6 | 30.6 |

What's inside the boiler?

Baxi 600 System



HOW WE MAKE IT EASY

**An industry-leading
choice of flues.**

Flues

Horizontal concentric flues Ø 60/100mm

Multifit flue group A

| Item description | Colour | Specification | Key and OD dimensions | Sales code |
|---|---------------------------|---------------|-----------------------|------------|
| 1 Horizontal telescopic flue inc. low profile elbow and fixing screws | White pipe/white terminal | 315mm - 500mm | 100mm | 720599401 |
| 2 Horizontal telescopic flue inc. low profile elbow and fixing screws | White pipe/black terminal | 315mm - 500mm | 100mm | 720598701 |
| 3 1m flue extension inc. fixing screws | White | 1000mm | 100mm | 720648801 |
| 4 93° flue bend inc. fixing screws | White | 93° | 100mm | 720648401 |
| 5 135° flue bend inc. fixing screws (pair) | White | 135° | 100mm | 720647901 |
| 6 Standard horizontal flue inc. low profile elbow and fixing screws | White pipe/black terminal | 685mm | 100mm | 7222019 |

Plume displacement kits Ø 60/100mm

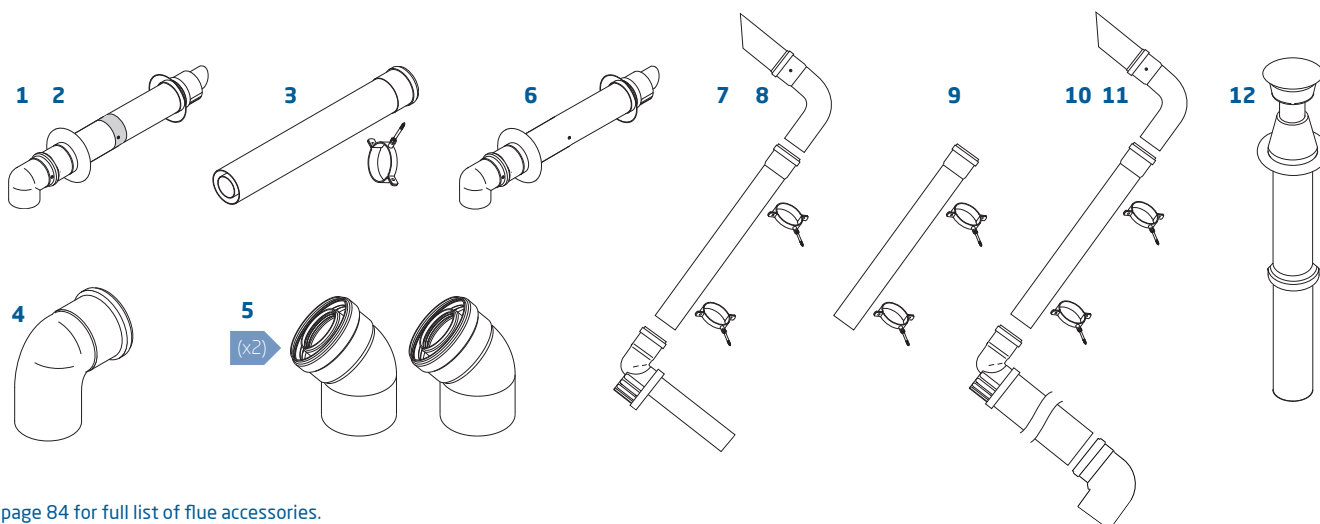
Multifit flue group A

| Item description | Colour | Specification | Key and OD dimensions | Sales code |
|---|--------|---------------|-----------------------|------------|
| 7 Plume displacement terminal kit for telescopic flue inc 1m extension and brackets | White | | 60mm | 720627001 |
| 8 Plume displacement terminal kit for telescopic flue inc 1m extension and brackets | Black | | 60mm | 720622901 |
| 9 Plume displacement kit extension and brackets | White | 1000mm | 60mm | 720643401 |
| 10 Plume displacement terminal kit inc. 1m extension and brackets | White | | 60mm | 7225717 |
| 11 Plume displacement terminal kit inc. 1m extension and brackets | Black | | 60mm | 7225716 |

Vertical concentric flues Ø 60/100mm

Multifit flue group A

| Item description | Colour | Specification | Key and OD dimensions | Sales code |
|--|--------|---------------|-----------------------|------------|
| 12 Vertical flue terminal | Black | | 100mm | 5118576 |
| 3 1m flue extension inc. fixing screws | White | 1000mm | 100mm | 720648801 |
| 4 93° flue bend inc. fixing screws | White | 93° | 100mm | 720648401 |
| 5 135° flue bend inc. fixing screws (pair) | White | 135° | 100mm | 720647901 |



See page 84 for full list of flue accessories.



Feature

Output of 24kW

Compact cupboard fit

Simple hanging bracket

Pipes behind facility within the boiler casing

Fully modulating and highly efficient

Top central flue

Brass hydraulics block

Front access to all components

Compatible with Multifit flue kits

Benefit

Suitable for most properties

Can be installed in a 290mm deep cupboard

Easy to install giving greater flexibility of pipework connections

Save time, space and money by piping behind within the footprint of the boiler

Boiler intelligently uses the right amount of fuel to meet the set central heating temperatures, saving money on fuel bills

Easier to replace old boiler, saving time

Trusted and robust

Saves time when servicing

Industry leading choice of bends, lengths and accessories

*Subject to registration and an annual service. Terms and conditions apply. Visit baxi.co.uk/warranty



Baxi 600 System LPG

The Baxi 600 System LPG offers an energy efficient solution for properties that are off the mains gas network. Its brass hydraulics, pipes behind facility, ease of installation and servicing and seven year warranty make it a firm favourite with both installers and householders.

Accessories and controls

The following accessories are compatible with the Baxi 600 System



Baxi IFOS System
(In Flue Outdoor
Sensor)
*See page 893
for options.*



7211473
Potterton EP
series 2



7212443
Twin channel
wired programmer



720971601
Baxi wired room
thermostat



MegaFlo Eco cylinder
*See www.heatraesadia.com
for range of cylinders.*

Technical specifications

HOW WE MAKE IT EASY

Easy to manoeuvre at only 28.1kg.



Boiler dimensions

| Width [A] | Height [B] | Depth [C] |
|-----------|------------|-----------|
| 390mm | 700mm | 285mm |

Service clearances

| Side [D] | Upper [E] | Lower [F] | Front [G] |
|----------|-----------|-----------|--|
| 5mm* | 178mm* | 200mm* | 5mm in operation*, (* 450mm for servicing purposes) |

*These are the minimum recommended dimensions.
Greater clearance will aid installation and maintenance.



What's in the box?



Baxi 600 System boiler



Wall mounted bracket



Literature and fitting pack



Copper pipe tails

Gas 22mm
CH 22mm
Safety discharge pipe connection 15mm

Technical details

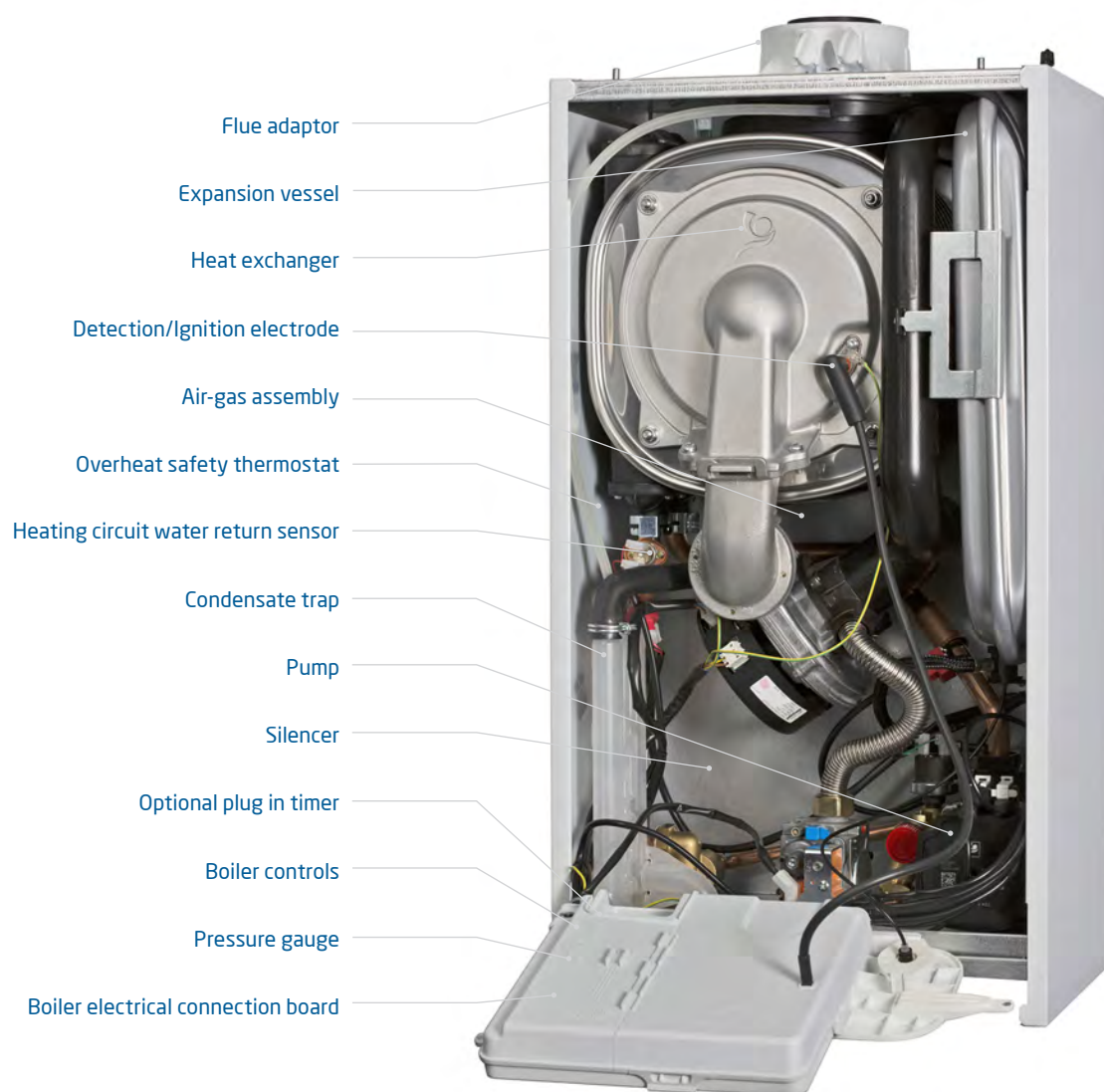
Baxi 600 System LPG

24 System LPG

| | | |
|--|-----------------------------|-------------|
| Sales code | Boiler only | 7716065 |
| Accessories and controls | | |
| Concealed user controls | | x |
| Operating mode selector switch with reset | | ✓ |
| User adjustable DHW temperature | Range - 35°C to 60°C | ✓ |
| User adjustable CH temperature | Range - 25°C to 80°C | ✓ |
| Temp/status/fault diagnosis display | | LCD display |
| Wired outdoor weather sensor & relay kit (7683087) | | Optional |
| Baxi wired room thermostat (720971601) | | Optional |
| Baxi twin channel wired programmer (7212443) | | Optional |
| Multifit rear pipework kit (7682790) | | Optional |
| Pre-plumb jig (7682545) | | Optional |
| ErP Product Information | | |
| Seasonal Space Heating Energy Efficiency | % | 93 |
| NOx | mg/kWh | 28.0 |
| Sound power level, indoors | LWA dB | 51 |
| Space heating efficiency class | | A |
| Heat input CH | kW (Max) Gross (QnHs) | 27.4 |
| | kW (Min) Gross (QnHs) | 5.2 |
| Heat output CH (non condensing) factory setting | kW (Max) (Pn) | 24 |
| | kW (Min) (Pn) | 4.5 |
| Heat output CH (condensing) factory setting | kW (Max) (Pnc) | 25.8 |
| | kW (Min) (Pnc) | 4.9 |
| Gas | | |
| Gas supply connection | (mm) | 22 |
| Inlet supply pressure (LPG) | mbar (nominal) | 37 |
| Maximum Gas Rate | m³/hr | 4.95 |
| SAP 2009 annual efficiency (PCDB / SEDBUK) | % | 89 |
| NOx class | | 6 |
| Mechanical and hydraulic | | |
| Heat input central heating (CH) | kW max gross (QnHs) | 27.4 |
| Safety discharge pressure | bar | 3 |
| Compartment ventilation required | | x |
| Flow/return pipe size | (mm) | 22 |
| Temporary filling loop supplied | | x |
| Integral expansion vessel | Size (litres) | 7 |
| CH system inhibitor required | | ✓ |
| Condensate discharge pipe size | (mm) | 21.5 |
| Electrical | | |
| Electrical supply | Volts/Hz | 230V/50Hz |
| Permanent live required | | ✓ |
| Electrical cable required | core | 3 x 0.75 |
| Power consumption when firing | Watts | 100 |
| External fuse rating | Amps | 3 |
| Internal fuse rating - connection board | Amps | 2HA250V |
| Internal fuse rating - Main PCB board | Amps | 1.6 |
| Boiler IP rating (electrical protection) without integral timer fitted | Approval Category | IPX5D |
| Circulating pump exercise feature | | ✓ |
| Pump overrun | | ✓ |
| Integral 'boiler only' frost thermostat | | ✓ |
| Concentric flue system | | |
| Standard telescopic concentric flue | Length in mm | 315-500 |
| Horizontal and Vertical concentric (60/100mm) | Max equivalent length (m) | 10 |
| | Reduction Per 135° bend (m) | 0.5 |
| | Reduction Per 93° bend (m) | 1 |
| | Max equivalent length (m) | 20 |
| Horizontal and Vertical concentric (80/125mm) | Max equivalent length (m) | 20 |
| Weights | | |
| Installer lift weight (boiler) | Max (kg) | 28.1 |
| Gross packaged boiler weight | (kg) | 30.6 |

What's inside the boiler?

Baxi 600 System LPG



HOW WE MAKE IT EASY

**An industry-leading
choice of flues.**

Flues

Horizontal concentric flues Ø 60/100mm

Multifit flue group A

| Item description | Colour | Specification | Key and OD dimensions | Sales code |
|---|---------------------------|---------------|-----------------------|------------|
| 1 Horizontal telescopic flue inc. low profile elbow and fixing screws | White pipe/white terminal | 315mm - 500mm | 100mm | 720599401 |
| 2 Horizontal telescopic flue inc. low profile elbow and fixing screws | White pipe/black terminal | 315mm - 500mm | 100mm | 720598701 |
| 3 1m flue extension inc. fixing screws | White | 1000mm | 100mm | 720648801 |
| 4 93° flue bend inc. fixing screws | White | 93° | 100mm | 720648401 |
| 5 135° flue bend inc. fixing screws (pair) | White | 135° | 100mm | 720647901 |
| 6 Standard horizontal flue inc. low profile elbow and fixing screws | White pipe/black terminal | 685mm | 100mm | 7222019 |

Plume displacement kits Ø 60/100mm

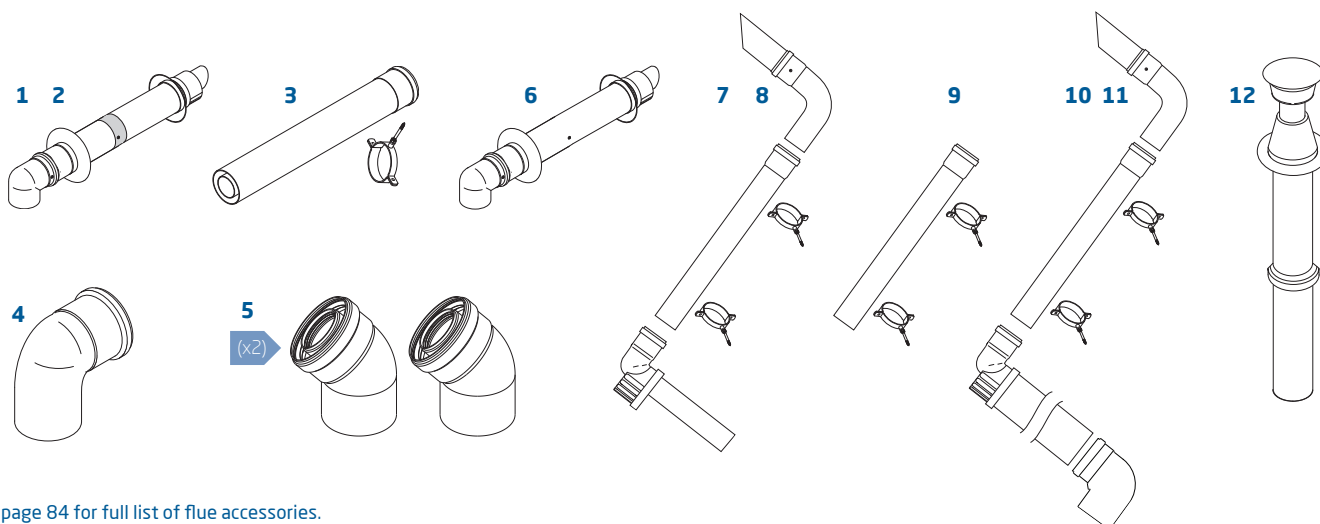
Multifit flue group A

| Item description | Colour | Specification | Key and OD dimensions | Sales code |
|---|--------|---------------|-----------------------|------------|
| 7 Plume displacement terminal kit for telescopic flue inc 1m extension and brackets | White | | 60mm | 720627001 |
| 8 Plume displacement terminal kit for telescopic flue inc 1m extension and brackets | Black | | 60mm | 720622901 |
| 9 Plume displacement kit extension and brackets | White | 1000mm | 60mm | 720643401 |
| 10 Plume displacement terminal kit inc. 1m extension and brackets | White | | 60mm | 7225717 |
| 11 Plume displacement terminal kit inc. 1m extension and brackets | Black | | 60mm | 7225716 |

Vertical concentric flues Ø 60/100mm

Multifit flue group A

| Item description | Colour | Specification | Key and OD dimensions | Sales code |
|--|--------|---------------|-----------------------|------------|
| 12 Vertical flue terminal | Black | | 100mm | 5118576 |
| 3 1m flue extension inc. fixing screws | White | 1000mm | 100mm | 720648801 |
| 4 93° flue bend inc. fixing screws | White | 93° | 100mm | 720648401 |
| 5 135° flue bend inc. fixing screws (pair) | White | 135° | 100mm | 720647901 |



See page 84 for full list of flue accessories.



Key features

Outputs: 15kW, 18kW, 24kW, 28kW and 32kW

Pre-plumbing jig

Built-in frost thermostat

Integral automatic bypass

Compatible with Multifit flue kits

Compatible with the market-leading Megaflo cylinders

Suitable for use with Baxi Solarflo solar thermal

Benefits

To suit most property sizes

Easy to install and maintain

Suitable for siting in garages and lofts

Suitable for systems with TVRs on every radiator

Industry-leading choice of lengths, bends, accessories

Made by our sister company Heatrae Sadia

Hot water from solar energy reduces energy bills

* Subject to registration and an annual service. Terms and conditions apply. Visit baxi.co.uk/warranty



*I regularly install the Megaflo boiler.
It is a great boiler, easy to work on
and good value for money.*

Jack Sowden
Royston Engineering

Baxi Megaflo System

Designed for fully pumped sealed systems, the Baxi Megaflo System can be installed with an unvented cylinder. It will satisfy the hot water and heating requirements of most homes, including larger properties with more than one bathroom.

Accessories

The following accessories are compatible with the Baxi Megaflo System



7211473
Potterton EP
series 2



7212443
Baxi twin channel
wired programmer



720971601
Baxi wired room
thermostat



Megaflo Eco cylinder
See www.heatraesadia.com
for range of cylinders.

Technical specifications

HOW WE MAKE IT EASY

Front access to all components makes servicing simple.



Boiler dimensions

| Width [A] | Height [B] | Depth [C] |
|-----------|------------|-----------|
| 450mm | 780mm | 345mm |

Service clearances

| Side [D] | Upper [E] | Lower [F] | Front [G] |
|----------|--|-----------|--|
| 5mm* | 200mm* (* 300mm if using 80/125 flueing system) | 150mm* | 5mm in operation*, (* 450mm for servicing purposes) |

*These are the minimum recommended dimensions. Greater clearance will aid installation and maintenance.



What's in the box?



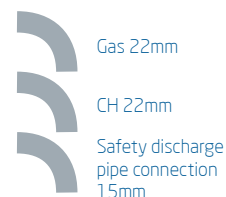
Megaflo System boiler



Pre-plumbing jig



Fitting instructions, template, user instructions, warranty



Copper pipe tails

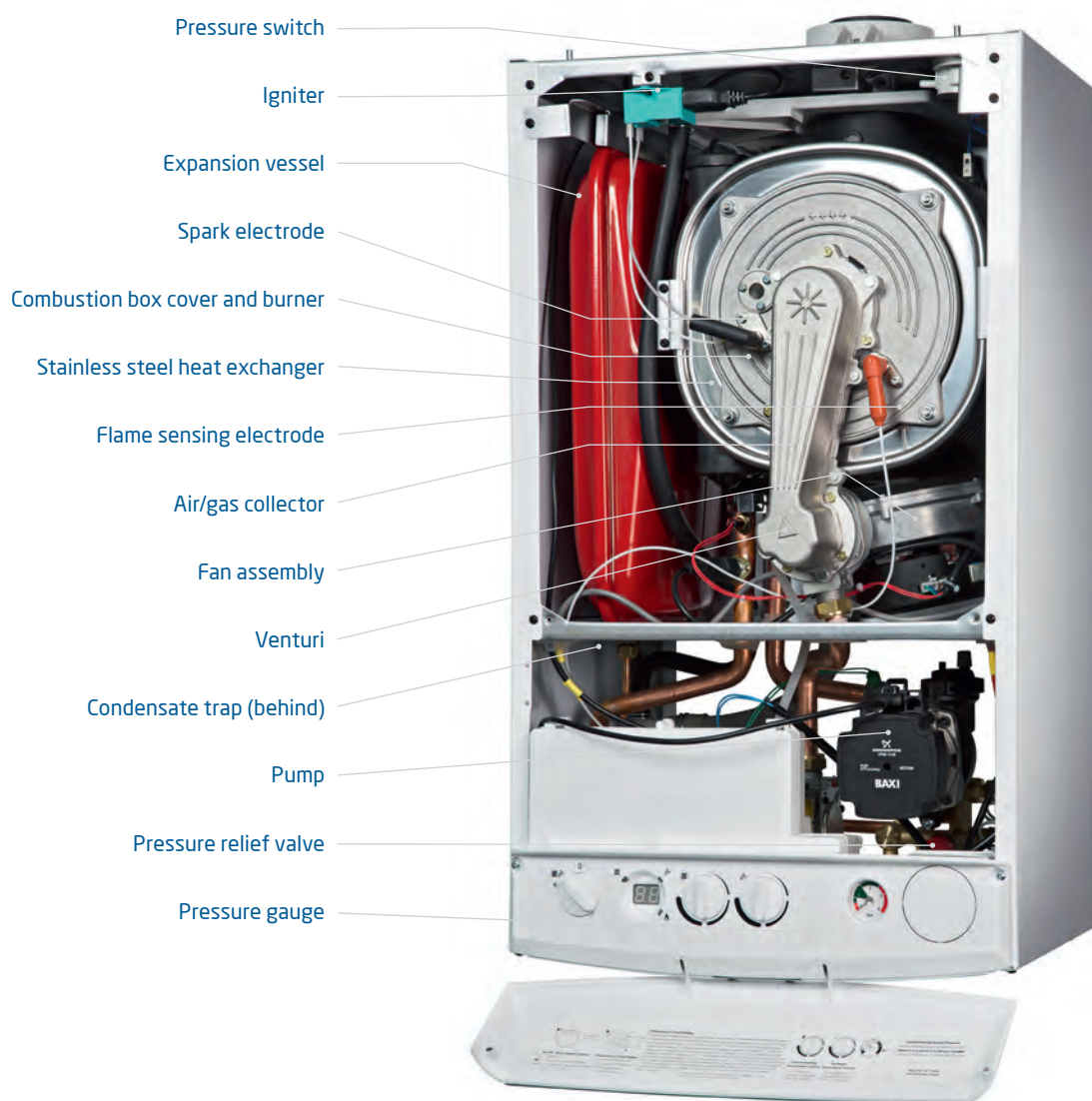
Technical details

Baxi Megaflo System ErP

| Baxi Megaflo System ErP | | 15 System | 18 System | 24 System | 28 System | 32 System |
|--|---------------------|-------------------------------------|-----------|-----------|-----------|-----------|
| Sales code | Boiler only | 7219444 | 7219445 | 7219446 | 7219447 | 7219448 |
| Controls | | | | | | |
| Concealed user controls | | ✓ | ✓ | ✓ | ✓ | ✓ |
| On/off switch with reset | | ✓ | ✓ | ✓ | ✓ | ✓ |
| User adjustable CH temperature | | ✓ | ✓ | ✓ | ✓ | ✓ |
| LED temp/status/fault diagnosis display | | 2 digits/3 LEDs on all models | | | | |
| Gas | | | | | | |
| Gas supply connection | mm | 22 | 22 | 22 | 22 | 22 |
| Natural gas | | ✓ | ✓ | ✓ | ✓ | ✓ |
| Nominal inlet supply pressure | mbar | 20 | 20 | 20 | 20 | 20 |
| Maximum gas rate NG | m³/hr | 1.69 | 1.95 | 2.61 | 3.1 | 3.48 |
| Heat input central heating | kW max gross (QnHs) | 17.1 | 20.5 | 27.4 | 32.1 | 36.4 |
| | kW min gross (QnHs) | 4.4 | 4.8 | 7.8 | 10.8 | 10.8 |
| Heat output CH non condensing | kW max (Pn) | 15 | 18 | 24 | 28 | 32 |
| | kW min (Pn) | 3.9 | 4.2 | 6.8 | 9.4 | 9.4 |
| Heat output CH condensing | kW max (Pnc) | 16.2 | 19.4 | 25.9 | 30.3 | 34.4 |
| | kW min (Pnc) | 4.2 | 4.5 | 7.4 | 10.2 | 10.2 |
| Boiler Plus ErP | % | 92.0 | 92.0 | 92.0 | 92.0 | 92.0 |
| SAP 2009 Annual Efficiency (PCDB/SEDBUK) | % | 88.6 | 88.6 | 88.6 | 88.5 | 88.5 |
| NOx class | | 6 | 6 | 6 | 6 | 6 |
| ErP Product Information | | | | | | |
| NOx | mg/kWh | 25 | 29 | 20 | 20 | 24 |
| Sound power level, indoors | LWA dB | 52 | 53 | 58 | 53 | 54 |
| Space heating efficiency class | | A | A | A | A | A |
| Electrical | | | | | | |
| Electrical supply | Volts/Hz | 230V/50Hz | 230V/50Hz | 230V/50Hz | 230V/50Hz | 230V/50Hz |
| Permanent live required | | ✓ | ✓ | ✓ | ✓ | ✓ |
| Fitted electrical cable | | 1m x 3 core x 0.75mm² on all models | | | | |
| Power consumption | Watts | 130 | 140 | 150 | 160 | 160 |
| External fuse rating | Amps | 3 | 3 | 3 | 3 | 3 |
| Internal fuse rating | Amps | F2L | F2L | F2L | F2L | F2L |
| Ingress protection rating (without electro-mechanical timer fitted) | | IPX 5D | IPX 5D | IPX 5D | IPX 5D | IPX 5D |
| 24 hour pump exercise | | ✓ | ✓ | ✓ | ✓ | ✓ |
| Pump overrun | | ✓ | ✓ | ✓ | ✓ | ✓ |
| Integral 'boiler only' frost thermostat | | ✓ | ✓ | ✓ | ✓ | ✓ |
| Mechanical and hydraulic | | | | | | |
| Compartment ventilation requirement | | None | None | None | None | None |
| Pre-plumbing/wall mounting jig | | ✓ | ✓ | ✓ | ✓ | ✓ |
| Flow and return pipe size | mm | 22 | 22 | 22 | 22 | 22 |
| Condensate discharge pipe size | mm | 21.5 | 21.5 | 21.5 | 21.5 | 21.5 |
| Integral automatic bypass | | ✓ | ✓ | ✓ | ✓ | ✓ |
| Safety discharge pressure | bar | 3 | 3 | 3 | 3 | 3 |
| Integral expansion vessel | litres | 8 | 8 | 8 | 10 | 10 |
| Max capacity of central heating system | litres | 125 | 125 | 125 | 125 | 125 |
| CH system inhibitor required | | ✓ | ✓ | ✓ | ✓ | ✓ |
| Concentric Flue System | | | | | | |
| Standard telescopic horizontal flue kit length | mm | 315 - 500 | 315 - 500 | 315 - 500 | 315 - 500 | 315 - 500 |
| Max equiv length horizontal/vertical (60/100mm) | m | 10 | 10 | 10 | 10 | 10 |
| Max equiv length horizontal/vertical (80/125mm) | m | 20 | 20 | 20 | 20 | 20 |
| Equivalent length per 135° bend | m | 0.5 | 0.5 | 0.5 | 0.5 | 0.5 |
| Equivalent length per 93° bend | m | 1 | 1 | 1 | 1 | 1 |
| Weights | | | | | | |
| Installer lift weight (boiler) (max) | kg | 36.4 | 36.4 | 37.9 | 37.9 | 38.4 |
| Gross packaged boiler weight | kg | 41.5 | 41.5 | 43 | 43 | 43.5 |

What's inside the boiler?

Baxi Megaflo System



HOW WE MAKE IT EASY

Telescopic horizontal flue option is quick and easy to fit.

Flues

Horizontal concentric flues Ø 60/100mm

Multifit flue group A

| Item description | Colour | Specification | Key and OD dimensions | Sales code |
|---|---------------------------|---------------|-----------------------|------------|
| 1 Horizontal telescopic flue inc. low profile elbow and fixing screws | White pipe/white terminal | 315mm - 500mm | 100mm | 720599401 |
| 2 Horizontal telescopic flue inc. low profile elbow and fixing screws | White pipe/black terminal | 315mm - 500mm | 100mm | 720598701 |
| 3 1m flue extension inc. fixing screws | White | 1000mm | 100mm | 720648801 |
| 4 93° flue bend inc. fixing screws | White | 93° | 100mm | 720648401 |
| 5 135° flue bend inc. fixing screws (pair) | White | 135° | 100mm | 720647901 |
| 6 Standard horizontal flue inc. low profile elbow and fixing screws | White pipe/black terminal | 685mm | 100mm | 7222019 |

Plume displacement kits Ø 60/100mm

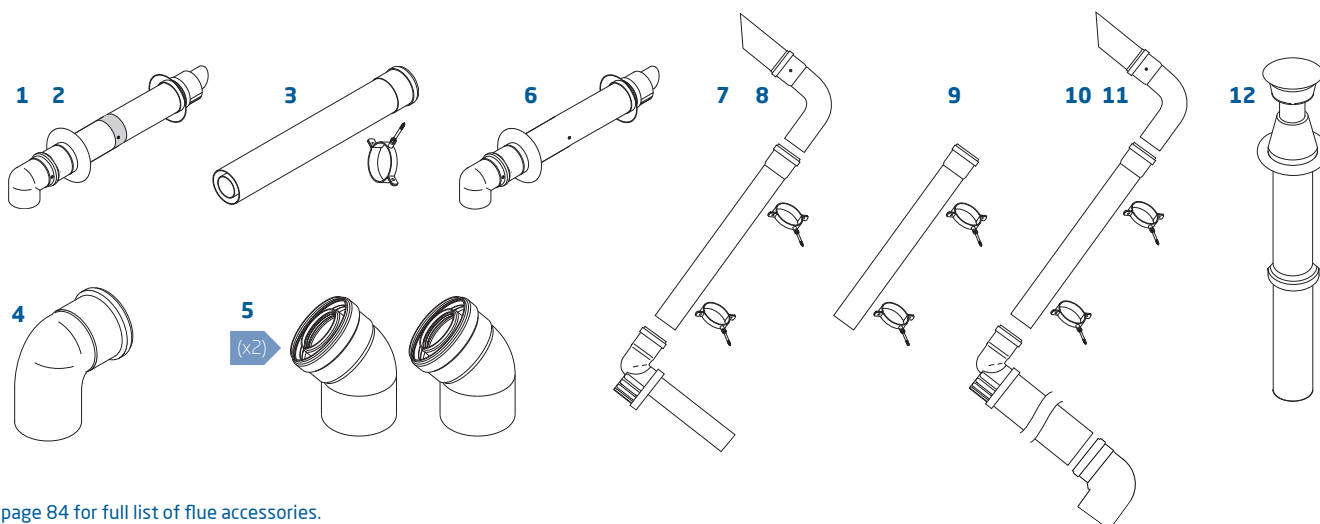
Multifit flue group A

| Item description | Colour | Specification | Key and OD dimensions | Sales code |
|---|--------|---------------|-----------------------|------------|
| 7 Plume displacement terminal kit for telescopic flue inc 1m extension and brackets | White | | 60mm | 720627001 |
| 8 Plume displacement terminal kit for telescopic flue inc 1m extension and brackets | Black | | 60mm | 720622901 |
| 9 Plume displacement kit extension and brackets | White | 1000mm | 60mm | 720643401 |
| 10 Plume displacement terminal kit inc. 1m extension and brackets | White | | 60mm | 7225717 |
| 11 Plume displacement terminal kit inc. 1m extension and brackets | Black | | 60mm | 7225716 |

Vertical concentric flues Ø 60/100mm

Multifit flue group A

| Item description | Colour | Specification | Key and OD dimensions | Sales code |
|--|--------|---------------|-----------------------|------------|
| 12 Vertical flue terminal | Black | | 100mm | 5118576 |
| 3 1m flue extension inc. fixing screws | White | 1000mm | 100mm | 720648801 |
| 4 93° flue bend inc. fixing screws | White | 93° | 100mm | 720648401 |
| 5 135° flue bend inc. fixing screws (pair) | White | 135° | 100mm | 720647901 |



See page 84 for full list of flue accessories.



Feature

Outputs 13kW, 16kW, 19kW, 25kW and 30kW

Only 19.5kg installer lift weight

Compact cupboard fit

No pump overrun or permanent live required

Suitable for fully pumped open vent or sealed systems

Very quiet in operation

Easy fit wall mounting bracket

Front and side access

Central top flue or in case rear flue option

Industry leading choice of flue lengths, bends and accessories

Central heating temperature control

Benefit

To suit most property sizes

The lightest boiler available in the UK**

Can be installed in a 290mm deep cupboard

Saves time and money during installation, and less disruption for the householder

For installation flexibility

Minimal disturbance during use

Robust with a positive fix and audible lock so you know it's secure

Servicing is easier and quicker, and no special tools are required

For reduced boiler footprint and improved look

Extensive flue option up to 12 meters for versatile siting and easy replacement

For ease of use maximising comfort

*Subject to registration and an annual service. Terms and conditions apply. Visit baxi.co.uk/warranty

**As at April 2018



The rear flue option on the Baxi 600 Heat made it the perfect choice when I had to replace an old balanced flue boiler. So light, an easy lift weight, compact and easy to use for both installer and customer. The homeowner was very pleased.

George Drake
Installer

Baxi 600 Heat

With an output to suit every size of home, top or rear flue option, no need for a pump overrun or permanent live and a lift weight of just 19.5 kg, this powerful boiler can be installed on open vent or sealed systems, making it the perfect choice for homes with a high demand for hot water.

Accessories and controls

The following accessories are compatible with the Baxi 600 Heat



7211473
Potterton EP
series 2



7212443
Twin channel
wired programmer



720971601
Baxi wired room
thermostat



Megafluo Eco cylinder
See www.heatraesadia.com
for range of cylinders.

Technical specifications

HOW WE MAKE IT EASY

The lightest boiler available in the UK



Boiler dimensions

| Width [A] | Height [B] | Depth [C] |
|-----------|------------|-----------|
| 370mm | 625mm | 270mm |

Service clearances

| Side [D] | Upper [E] | Lower [F] | Front [G] |
|----------|--------------------------|-----------------------------------|------------------------------------|
| 5mm* | 190mm* | 120mm* | 5mm* |
| | 35mm* if using rear flue | 35mm* in 300mm deep wall cupboard | in operation, 500mm* for servicing |

*These are the minimum recommended dimensions. Greater clearance will aid installation and maintenance.



What's in the box?



Baxi 600 Heat Boiler



Wall bracket



Literature pack



Power lead



Top flue adaptor



Copper tail (gas connection) and fibre washer

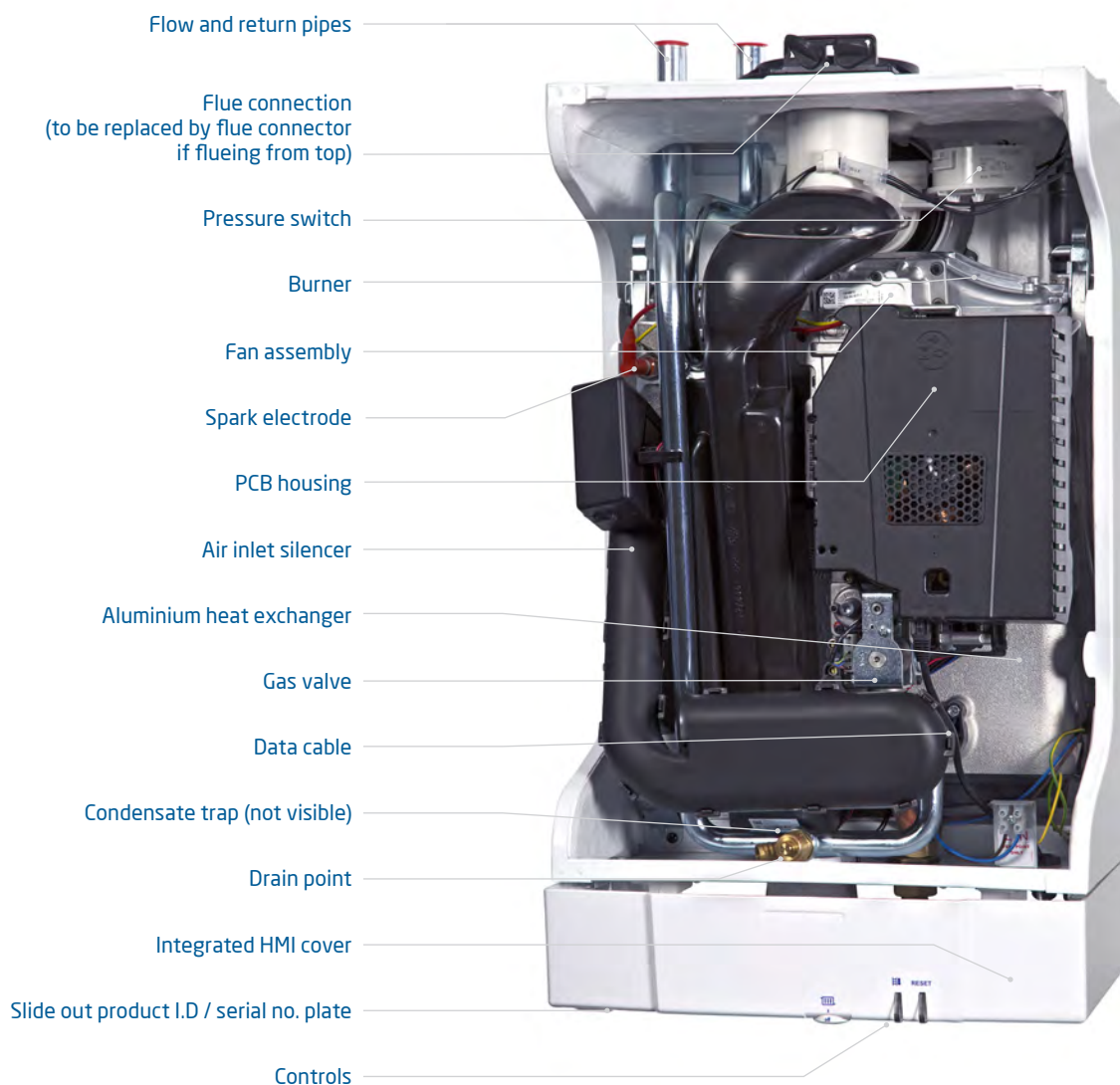
Technical details

Baxi 600 Heat

| | | 13 Heat | 16 Heat | 19 Heat | 25 Heat | 30 Heat |
|--|-----------------------------|-------------|-------------|-------------|-------------|-------------|
| Sales code | Boiler only | 7711998 | 7711999 | 7712020 | 7712022 | 7712023 |
| Controls and accessories | | | | | | |
| Operating mode selector switch with reset | Yes / no | ✓ | ✓ | ✓ | ✓ | ✓ |
| User adjustable CH temperature | Range - e.g. 45°C to 82°C | ✓ | ✓ | ✓ | ✓ | ✓ |
| LED temp/status/fault diagnosis display | Yes / no | ✓ | ✓ | ✓ | ✓ | ✓ |
| Baxi twin channel wired programmer | 7212443 | Optional | Optional | Optional | Optional | Optional |
| Baxi room thermostat | 720971601 | Optional | Optional | Optional | Optional | Optional |
| Gas | | | | | | |
| Boiler Plus ErP | % | 93.0 | 93.0 | 93.0 | 93.0 | 93.0 |
| SAP 2009 annual efficiency (PCDB/SEDBUK) | % | 89.2 | 89.2 | 89.2 | 89.1 | 89.1 |
| NOx class | 1 - 6 | 6 | 6 | 6 | 6 | 6 |
| ErP Product Information | | | | | | |
| NOx | mg/kWh | 18 | 20 | 21 | 24 | 24 |
| Sound power level, indoors | LWA dB | 37 | 39 | 41 | 45 | 49 |
| Space heating efficiency class | | A | A | A | A | A |
| Heat input CH | kW max gross (QnHs) | 14.88 | 18.32 | 21.75 | 28.62 | 34.35 |
| | kW min gross (QnHs) | 8.59 | 8.59 | 8.59 | 8.59 | 8.59 |
| | kW max (Pn) | 13 | 16 | 19 | 25 | 30 |
| Heat output CH (non condensing) | kW min (Pn) | 7.5 | 7.5 | 7.5 | 7.5 | 7.5 |
| | | | | | | |
| Gas supply connection | (mm) | 22 | 22 | 22 | 22 | 22 |
| Inlet supply pressure (natural gas) | mbar | 20 | 20 | 20 | 20 | 20 |
| Maximum gas rate | m³/hr | 1.42 | 1.75 | 2.07 | 2.73 | 3.27 |
| Mechanical and hydraulic | | | | | | |
| Compartment ventilation required | Yes / no | ✗ | ✗ | ✗ | ✗ | ✗ |
| Flow / return pipe size | (mm) | 22 | 22 | 22 | 22 | 22 |
| Condensate discharge pipe size | (mm) | 21.50 | 21.50 | 21.50 | 21.50 | 21.50 |
| Electrical | | | | | | |
| Electrical supply | Volts / Hz | 230V / 50Hz | 230V / 50Hz | 230V / 50Hz | 230V / 50Hz | 230V / 50Hz |
| Permanent live required | Yes / no | ✗ | ✗ | ✗ | ✗ | ✗ |
| Switched live | Yes / no | ✓ | ✓ | ✓ | ✓ | ✓ |
| Electrical power cable fitted as standard | 1m of 3 core | ✓ | ✓ | ✓ | ✓ | ✓ |
| Power consumption | Watts | 17 | 20 | 23 | 33 | 44 |
| External fuse rating | Amps | 3 | 3 | 3 | 3 | 3 |
| Internal fuse rating | | 1.6T | 1.6T | 1.6T | 1.6T | 1.6T |
| Boiler IP rating (electrical protection) | Approval category | IPX4D | IPX4D | IPX4D | IPX4D | IPX4D |
| Pump overrun | Yes / no | ✗ | ✗ | ✗ | ✗ | ✗ |
| Concentric flue system | | | | | | |
| Standard telescopic concentric flue | Length in mm | 315-500 | 315-500 | 315-500 | 315-500 | 315-500 |
| Horizontal and Vertical concentric (60/100 mm) | Max equivalent length (m) | 6 | 6 | 6 | 6 | 6 |
| | Reduction per 135° bend (m) | 0.5 | 0.5 | 0.5 | 0.5 | 0.5 |
| | Reduction per 93° bend (m) | 1 | 1 | 1 | 1 | 1 |
| Horizontal and Vertical concentric (80/125 mm) | Max equivalent length (m) | 12 | 12 | 12 | 12 | 12 |
| Weight | | | | | | |
| Installer lift weight | Max (kg) | 19.5 | 19.5 | 19.5 | 19.5 | 19.5 |
| Gross packaged boiler weight | (kg) | 21.5 | 21.5 | 21.5 | 21.5 | 21.5 |

What's inside the boiler?

Baxi 600 Heat



HOW WE MAKE IT EASY

Servicing is easier and quicker, and no special tools are required

Flues

Horizontal concentric flues Ø 60/100mm

Multifit Flue Group A

| Item description | Colour | Specification | Key and OD dimensions | Sales code |
|---|---------------------------|---------------|-----------------------|------------|
| 1 Horizontal telescopic flue inc. low profile elbow and fixing screws | White pipe/white terminal | 315mm - 500mm | 100mm | 720599401 |
| 2 Horizontal telescopic flue inc. low profile elbow and fixing screws | White pipe/black terminal | 315mm - 500mm | 100mm | 720598701 |
| 3 1m flue extension inc. fixing screws | White | 1000mm | 100mm | 720648801 |
| 4 93° flue bend inc. fixing screws | White | 93° | 100mm | 720648401 |
| 5 135° flue bend inc. fixing screws (pair) | White | 135° | 100mm | 720647901 |
| 6 Standard horizontal flue inc. low profile elbow and fixing screws | White pipe/black terminal | 685mm | 100mm | 7222019 |
| 7 Horizontal telescopic in case rear flue inc. fixing screws | White pipe/black terminal | | 100mm | 7210434 |

Plume displacement kits Ø 60/100mm

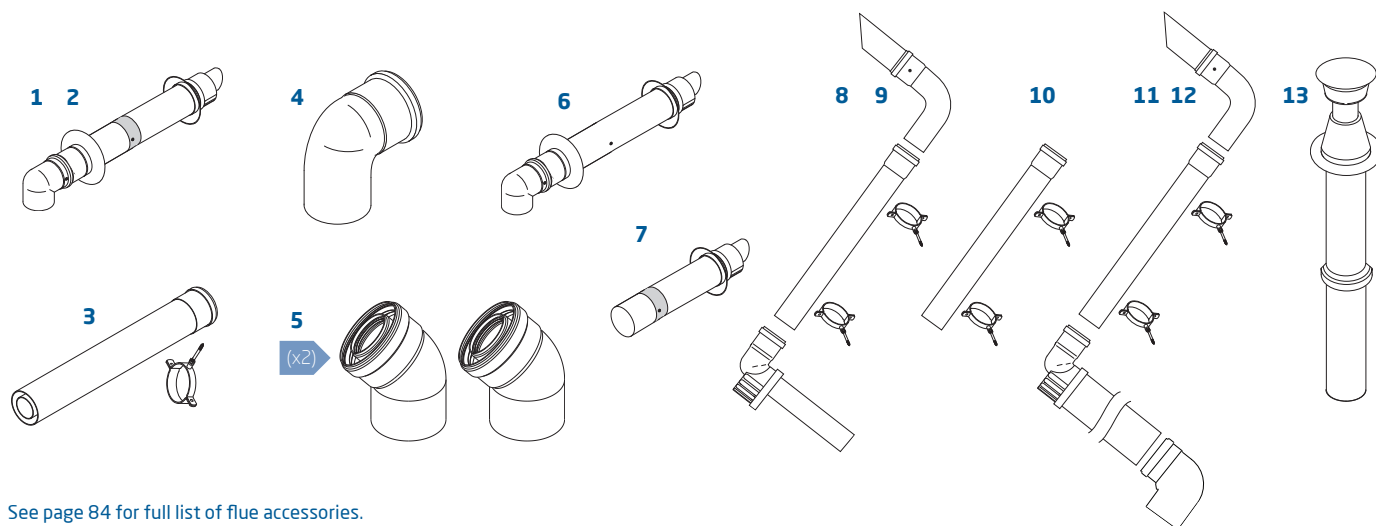
Multifit Flue Group A

| Item description | Colour | Specification | Key and OD dimensions | Sales code |
|---|--------|---------------|-----------------------|------------|
| 8 Plume displacement terminal kit for telescopic flue inc 1m extension and brackets | White | | 60mm | 720627001 |
| 9 Plume displacement terminal kit for telescopic flue inc 1m extension and brackets | Black | | 60mm | 720622901 |
| 10 Plume displacement kit extension and brackets | White | 1000mm | 60mm | 720643401 |
| 11 Plume displacement terminal kit inc. 1m extension and brackets | White | | 100mm | 7225717 |
| 12 Plume displacement terminal kit inc. 1m extension and brackets | Black | | 100mm | 7225716 |

Vertical concentric flues Ø 60/100mm

Multifit Flue Group A

| Item description | Colour | Specification | Key and OD dimensions | Sales code |
|--|--------|---------------|-----------------------|------------|
| 13 Vertical flue terminal | Black | | 100mm | 5118576 |
| 3 1m flue extension inc. fixing screws | White | 1000mm | 100mm | 720648801 |
| 4 93° flue bend inc. fixing screws | White | 93° | 100mm | 720648401 |
| 5 135° flue bend inc. fixing screws (pair) | White | 135° | 100mm | 720647901 |



See page 84 for full list of flue accessories.



Key features

Outputs: 12kW, 15kW, 18kW, 24kW and 30kW

Only 19.5kg installer lift weight

Cupboard fit

Easy fit wall mounting bracket

One metre lead included

Top or rear flue option

Simple fixing of rear flue

No pump overrun or permanent live required

Front and side access

Wide choice of flue lengths, bends and accessories

Benefits

To suit most property sizes

The lightest boiler available in UK**

Can be installed discreetly

Robust with a positive fix and audible lock so you know it's secure

Easy to install and you don't need access to the control box

For ease of installation

For easy and fail-safe flue fixing

Saves time and money during installation, and less disruption for the householder

Servicing is easier and quicker, and no special tools are required

For versatile siting

* Subject to registration and an annual service. Terms and conditions apply. Visit baxi.co.uk/warranty ** As at October 2018.



Baxi 400 Heat



The rear flue option on the Baxi 400 Heat made it the perfect choice when I had to replace an old balanced flue boiler. So light, an easy lift weight, compact and easy to use for both installer and customer. The homeowner was very pleased.

George Drake
Installer

The Baxi 400 Heat is, at only 19.5kg, the lightest boiler available on the UK market.** It has a rear and central flue option and does not need a pump overrun or permanent live, making it suitable as a replacement for old boilers.

Small enough to fit into a cupboard, the Baxi 400 Heat has a contemporary style that will also fit with any modern interior.

Accessories

The following accessories are compatible with the Baxi 400 Heat



7212443
Baxi twin channel
wired programmer



720971601
Baxi room
thermostat



7211473
Potterton EP
series 2



MegaFlo Eco cylinder
See www.heatraesadia.com
for range of cylinders.

Technical specifications

HOW WE MAKE IT EASY

The lightest boiler available in the UK



Boiler dimensions

| Width [A] | Height [B] | Depth [C] |
|-----------|------------|-----------|
| 370mm | 625mm | 270mm |

Service clearances

| Side [D] | Upper [E] | Lower [F] | Front [G] |
|----------|-----------------------------|--------------------------------------|---------------------------------------|
| 5mm* | 190mm* | 120mm* | 5mm* |
| | (* 35mm if using rear flue) | (* 35mm in 300mm deep wall cupboard) | (* in operation, 500mm for servicing) |

*These are the minimum recommended dimensions. Greater clearance will aid installation and maintenance.



What's in the box?



Baxi 400 Heat boiler



Wall bracket



Literature pack



Power lead



Top flue adaptor



Copper tail (gas connection) and fibre washer

Technical details

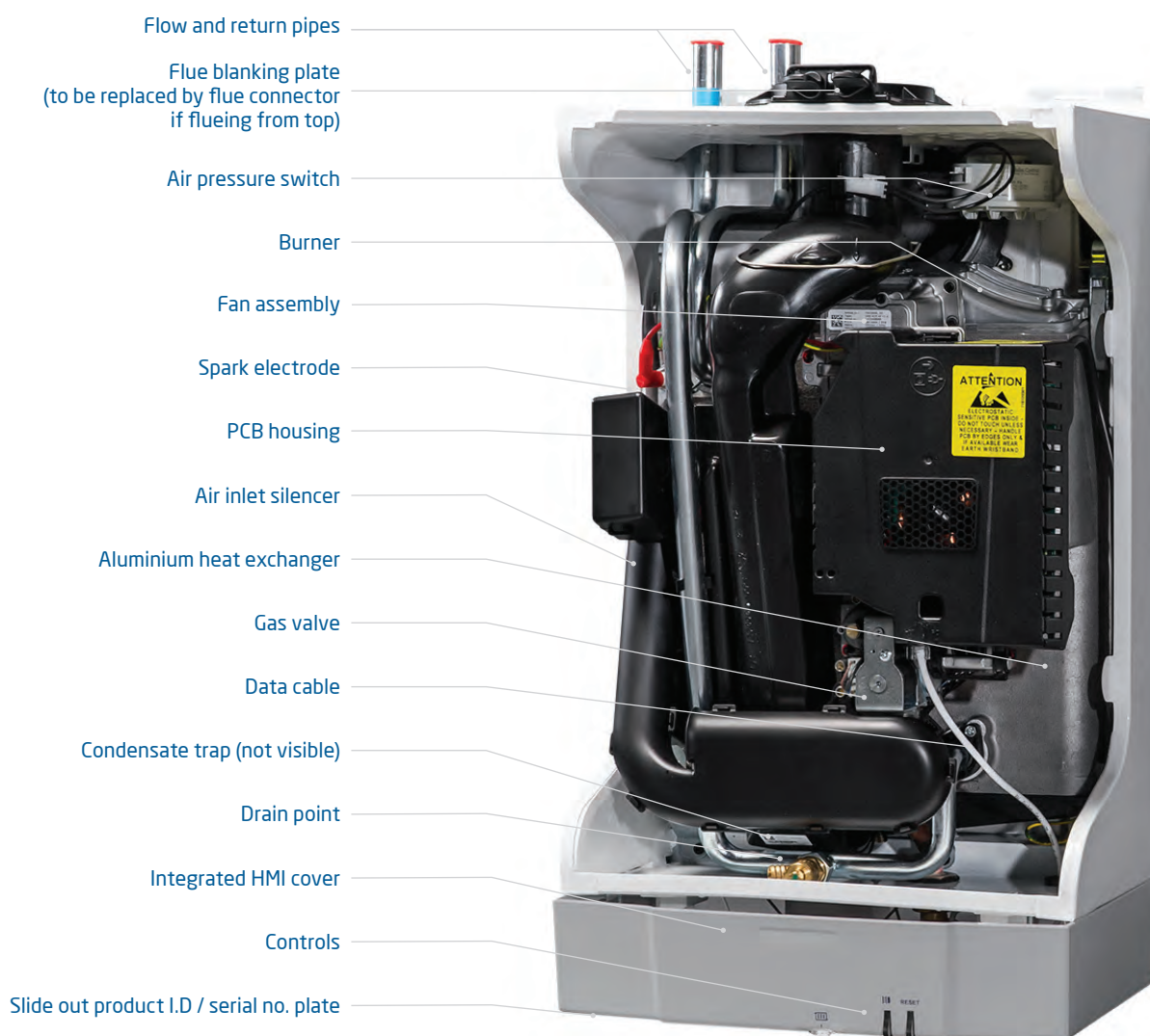
Baxi 400 Heat ErP

415 Heat 418 Heat 424 Heat

| Sales code | Boiler only | 7668933 | 7668934 | 7668935 |
|--|-----------------------------|-------------|-------------|-------------|
| Controls and accessories | | | | |
| Operating mode selector switch with reset | Yes / no | ✓ | ✓ | ✓ |
| User adjustable CH temperature | Range - e.g. 45°C to 82°C | ✓ | ✓ | ✓ |
| LED temp/status/fault diagnosis display | Yes / no | ✓ | ✓ | ✓ |
| Baxi twin channel wired programmer | 7212443 | Optional | Optional | Optional |
| Baxi room thermostat | 720971601 | Optional | Optional | Optional |
| Gas | | | | |
| Boiler Plus ErP | % | 93.0 | 93.0 | 93.0 |
| SAP 2009 annual efficiency (PCDB/SEDBUK) | % | 89.2 | 89.2 | 89.1 |
| NOx class | 1 - 5 | 6 | 6 | 6 |
| ErP Product Information | | | | |
| NOx | mg/kWh | 20 | 21 | 23 |
| Sound power level, indoors | LWA dB | 33 | 34 | 35 |
| Space heating efficiency class | | A | A | A |
| Heat input CH | kW max gross (QnHs) | 18.32 | 21.75 | 28.62 |
| | kW min gross (QnHs) | 8.59 | 8.59 | 8.59 |
| | kW max (Pn) | 16 | 19 | 25 |
| | kW min (Pn) | 7.5 | 7.5 | 7.5 |
| Gas supply connection | (mm) | 22 | 22 | 22 |
| Inlet supply pressure (natural gas) | mbar | 20 | 20 | 20 |
| Maximum gas rate | m³/hr | 1.75 | 2.07 | 2.73 |
| Mechanical and hydraulic | | | | |
| Compartment ventilation required | | X | X | X |
| Flow / return pipe size | (mm) | 22 | 22 | 22 |
| Condensate discharge pipe size | (mm) | 21.50 | 21.50 | 21.50 |
| Electrical | | | | |
| Electrical supply | Volts / Hz | 230V / 50Hz | 230V / 50Hz | 230V / 50Hz |
| Permanent live required | Yes / no | X | X | X |
| Switched live | Yes / no | ✓ | ✓ | ✓ |
| Electrical power cable fitted as standard | 1m of 3 core | ✓ | ✓ | ✓ |
| Power consumption | Watts | 20 | 23 | 33 |
| External fuse rating | Amps | 3 | 3 | 3 |
| Internal fuse rating | | 1.6T | 1.6T | 1.6T |
| Boiler IP rating (electrical protection) | Approval category | IPX4D | IPX4D | IPX4D |
| Pump overrun | Yes / no | X | X | X |
| Concentric flue system | | | | |
| Standard telescopic concentric flue | Length in mm | 315-500 | 315-500 | 315-500 |
| Standard in-case rear telescopic concentric flue | Length in mm | 220 - 345 | 220 - 345 | 220 - 345 |
| Horizontal and Vertical concentric (60/100 mm) | Max equivalent length (m) | 6 | 6 | 6 |
| | Reduction per 135° bend (m) | 0.5 | 0.5 | 0.5 |
| | Reduction per 93° bend (m) | 1 | 1 | 1 |
| Horizontal and Vertical concentric (80/125 mm) | Max equivalent length (m) | 12 | 12 | 12 |
| Weight | | | | |
| Installer lift weight | Max (kg) | 19.5 | 19.5 | 19.5 |
| Gross packaged boiler weight | (kg) | 21.5 | 21.5 | 21.5 |

What's inside the boiler?

Baxi 400 Heat



HOW WE MAKE IT EASY

Servicing is easier and quicker, and no special tools are required

Flues

Horizontal concentric flues Ø 60/100mm

Multifit Flue Group A

| Item description | Colour | Specification | Key and OD dimensions | Sales code |
|---|---------------------------|---------------|-----------------------|------------|
| 1 Horizontal telescopic flue inc. low profile elbow and fixing screws | White pipe/white terminal | 315mm - 500mm | 100mm | 720599401 |
| 2 Horizontal telescopic flue inc. low profile elbow and fixing screws | White pipe/black terminal | 315mm - 500mm | 100mm | 720598701 |
| 3 1m flue extension inc. fixing screws and bracket | White | 1000mm | 100mm | 720648801 |
| 4 93° flue bend inc. fixing screws | White | 93° | 100mm | 720648401 |
| 5 135° flue bend inc. fixing screws (pair) | White | 135° | 100mm | 720647901 |
| 6 Standard horizontal flue inc. low profile elbow and fixing screws | White pipe/black terminal | 685mm | 100mm | 7222019 |
| 7 Horizontal telescopic in case rear flue inc. fixing screws | White pipe/black terminal | | 100mm | 7210434 |

Plume displacement kits Ø 60/100mm

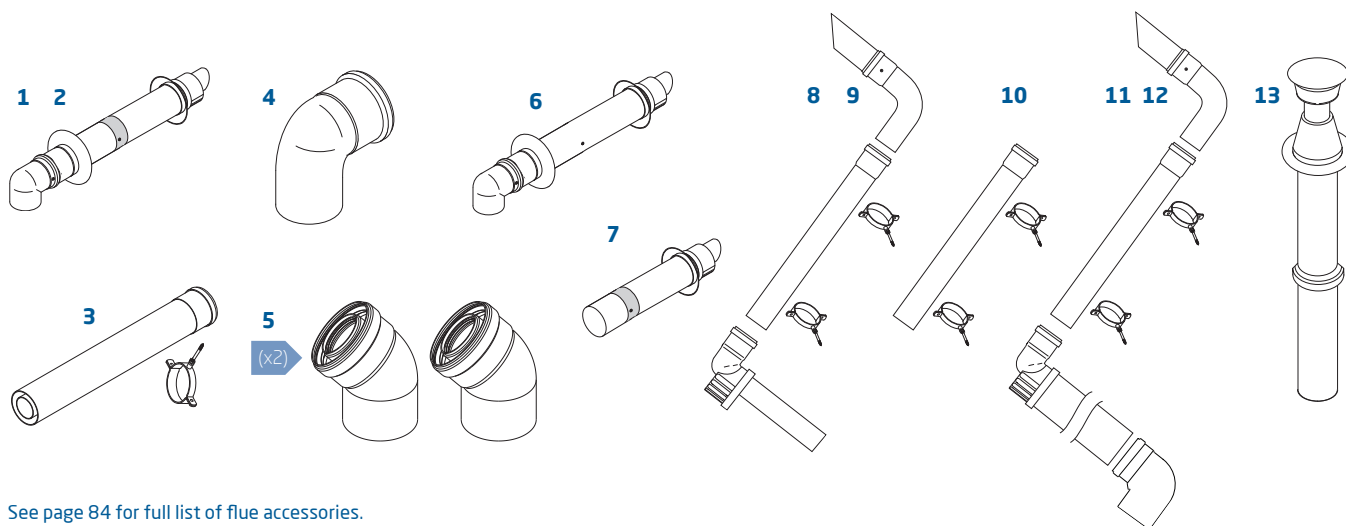
Multifit Flue Group A

| Item description | Colour | Specification | Key and OD dimensions | Sales code |
|---|--------|---------------|-----------------------|------------|
| 8 Plume displacement terminal kit for telescopic flue inc 1m extension and brackets | White | | 60mm | 720627001 |
| 9 Plume displacement terminal kit for telescopic flue inc 1m extension and brackets | Black | | 60mm | 720622901 |
| 10 Plume displacement kit extension and brackets | White | 1000mm | 60mm | 720643401 |
| 11 Plume displacement terminal kit inc. 1m extension and brackets | White | | 100mm | 7225717 |
| 12 Plume displacement terminal kit inc. 1m extension and brackets | Black | | 100mm | 7225716 |

Vertical concentric flues Ø 60/100mm

Multifit Flue Group A

| Item description | Colour | Specification | Key and OD dimensions | Sales code |
|--|--------|---------------|-----------------------|------------|
| 13 Vertical flue terminal | Black | | 100mm | 5118576 |
| 3 1m flue extension inc. fixing screws and bracket | White | 1000mm | 100mm | 720648801 |
| 4 93° flue bend inc. fixing screws | White | 93° | 100mm | 720648401 |
| 5 135° flue bend inc. fixing screws (pair) | White | 135° | 100mm | 720647901 |



See page 84 for full list of flue accessories.



| Feature | Benefit |
|--|--|
| Sensor housing clips into the air duct of a horizontal or vertical flue terminal | Quick and easy, takes minutes to fit |
| Fits under the air duct | Kept out of direct sunlight, so no need to fit on a north/north west wall; no height restrictions |
| Free flow of air over the sensor | More accurate temperature sensing, ensuring best possible operation |
| Two wire cable runs back to the boiler down the flue air duct | Extremely simple to fit, with no drilling or disruption |
| A connector block that is suitable to be installed within the flue air duct | When used with the Extension Kit, the wire can be extended to any length of flue, for more versatile siting of boiler |
| A resistor for high heat loss houses | The flow temperature can be set higher for high heat loss properties |
| SAP benefit for new builds | Helps to maximise the SAP rating of the property |
| Multifit IFOS System relay simply clips onto the board | Compatible with Baxi 600 System, Main Eco Compact System, Potterton Assure System so that an IFOS can be installed |
| Multifit IFOS Extension kit | It can safely extend the length of the Multifit IFOS Combi, Multifit IFOS System and Multifit IFOS Ridge Tile kit by up to 5 metres. |
| Multifit IFOS Ridge Tile with connector | Pre-fitted to make installation as easy as possible; IFOS can be extended to suit any length of flue |



Great product easy add on for boiler plus
Simple wiring, it routes nicely from flue
down the inside of the boiler, the
cheapest way to get Boiler Plus -

Approved Technical Services Ltd

Multifit IFOS In Flue Outdoor Sensor

Baxi has made it even easier to comply with Boiler Plus!

- Now available for horizontal and vertical flues
- Multifit IFOS System kit for use with Baxi 600 System, Potterton Assure System and Main Eco Compact System
- Multifit IFOS Ridge Tile - reduces the time spent working at height

| | | | |
|---|---|---|--|
|  |  |  |  |
| Multifit IFOS Combi 7724181 | Multifit IFOS System 7729979 | Multifit IFOS Extension 7724260 | Multifit IFOS Ridge Tile 7729943 |

Flue solutions

Multifit flue kits now come with positive screw fixings for all connections and are available in a choice of lengths to reduce the need for onsite cutting. By popular demand we offer a choice of colours for the terminals to match existing rainwater systems.

| | Flue type | Group A | Group G |
|--|-----------------------|-----------------------|------------|
| Maximum permissible equivalent flue lengths for Baxi combi, system boilers are: | Horizontal concentric | 10m | 20m |
| | Vertical concentric | 10m | 20m |
| Maximum permissible equivalent flue lengths for Baxi heat only boilers are: | Horizontal concentric | 6m | 12m |
| | Vertical concentric | 6m | 12m |
| Where inline bends are required in a flue system, the overall length must be reduced by the following amounts: | Concentric pipes | 135° bend 93° bend | 0.5m 1m |

Horizontal concentric flues Ø 60/100mm

Multifit Flue Group A

| Item | Description (multifit) flue system | Colour | Specification | Key and OD dimensions | Sales code |
|------|---|-------------------------------|--|-----------------------|------------|
| 1 | Horizontal telescopic flue inc. low profile elbow and fixing screws | White pipe/ white terminal | 315mm - 500mm | 60/100mm | 720599401 |
| 2 | Horizontal telescopic flue inc. low profile elbow and fixing screws | White pipe/ black terminal | 315mm - 500mm | 60/100mm | 720598701 |
| 3 | Horizontal telescopic flue inc. low profile elbow and fixing screws | White pipe/ brown terminal | 315mm - 500mm | 60/100mm | 720642701 |
| 4 | Standard horizontal flue inc. low profile elbow and fixing screws* | White pipe/ black terminal | 685mm | 100mm | 7222019 |
| 5 | Flue terminal deflector | White | | 60mm | 720644201 |
| 6 | Flue terminal deflector | Black | | 60mm | 5111068 |
| 7 | Flue terminal deflector | Brown | | 60mm | 720644301 |
| 8 | 1m flue extension inc. fixing screws | White | 1000mm | 100mm | 720648801 |
| 9 | 0.5m flue extension inc. fixing screws | White | 500mm | 100mm | 720643001 |
| 10 | 0.25m flue extension inc. fixing screws | White | 250mm | 100mm | 720643101 |
| 11 | 93° flue bend inc. fixing screws | White | 93° | 100mm | 720648401 |
| 12 | 135° flue bend inc. fixing screws | White | 135° | 100mm | 720648501 |
| 13 | 135° flue bend inc. fixing screws (pair) | White | 135° | 100mm | 720647901 |
| 14 | Offset adaptor elbow | White | EcoBlue Advance Combi and Ecoblue 32 System only | 100mm | 720635501 |
| 15 | Stainless steel terminal guard - Ø 60/100 | S/S | Stainless steel | 100mm | 720627901 |

Plume displacement kits Ø 60/100mm

Multifit Flue Group A

| Item | Description (multifit) flue system | Colour | Specification | Key and OD dimensions | Sales code |
|------|--|--------|---------------|-----------------------|------------|
| 16 | Plume displacement terminal kit for telescopic flue inc. 1m extension and brackets | White | | 60mm | 720627001 |
| 17 | Plume displacement kit extension and brackets | White | 1000mm | 60mm | 720643401 |
| 18 | Plume displacement kit bend | White | 93° | 60mm | 5121369 |
| 19 | Plume displacement kit bend - pair | White | 135° | 60mm | 5121370 |
| 20 | Plume displacement terminal kit for telescopic flue inc. 1m extension and brackets | Black | | 60mm | 720622901 |
| 21 | Plume displacement kit extension and brackets | Black | 1000mm | 60mm | 720643301 |
| 22 | Plume displacement kit bend | Black | 93° | 60mm | 720648701 |
| 23 | Plume displacement kit bend - pair | Black | 135° | 60mm | 720648601 |
| 24 | Plume displacement terminal kit inc. 1m extension and brackets | White | | 60mm | 7225717 |
| 25 | Plume displacement terminal kit inc. 1m extension and brackets | Black | | 60mm | 7225716 |

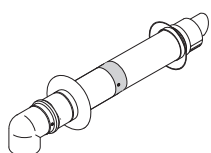
* Not compatible with items 16 and 20

Vertical concentric flues Ø 60/100mm

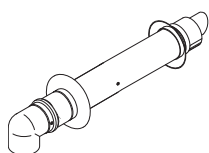
Multifit Flue Group A

| Item | Description (multifit) flue system | Colour | Specification | Key and OD dimensions | Sales code |
|------|--|--------|---------------|-----------------------|------------|
| 26 | Under balcony eaves flue kit | White | 135° | 60mm | 7211039 |
| 27 | Under balcony eaves flue kit | Black | 135° | 60mm | 7211041 |
| 28 | Vertical flue terminal | Black | | 100mm | 5118576 |
| 29 | Vertical ridge flue terminal | Brown | | 100mm | 720647101 |
| 30 | Roof cover plate | | | 125mm | 246143 |
| 8 | 1m flue extension inc. fixing screws | White | 1000mm | 100mm | 720648801 |
| 9 | 0.5m flue extension inc. fixing screws | White | 500mm | 100mm | 720643001 |
| 10 | 0.25m flue extension inc. fixing screws | White | 250mm | 100mm | 720643101 |
| 11 | 93° flue bend inc. fixing screws | White | 93° | 100mm | 720648401 |
| 12 | 135° flue bend inc. fixing screws | White | 135° | 100mm | 720648501 |
| 13 | 135° flue bend (pair) inc. fixing screws | White | 135° | 100mm | 720647901 |
| 31 | Pitched roof flashing | | 25°/50° | 125mm | 5122151 |
| 32 | Flat roof flashing | | | 125mm | 246144 |

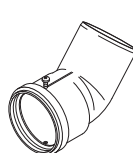
1 2 3



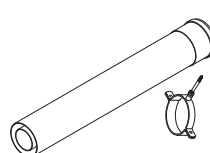
4



5 6 7



8 9 10



11



12

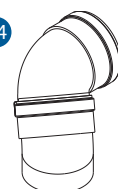


13

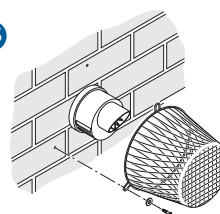
(x2)



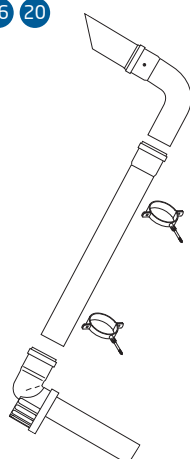
14



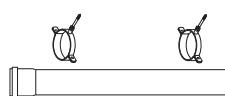
15



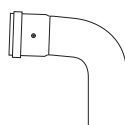
16 20



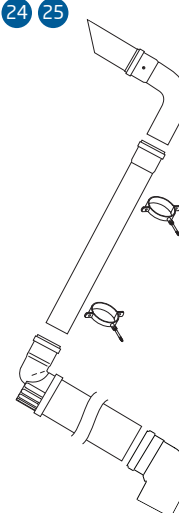
17 21



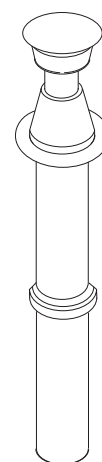
18 22



24 25



28



19 23

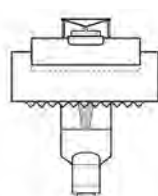
(x2)



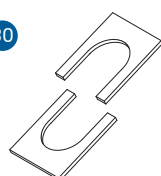
26 27



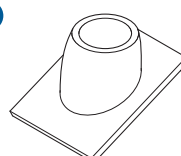
29



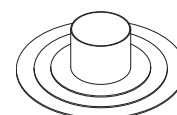
30



31



32



Flue solutions

Horizontal concentric flues Ø 80/125mm

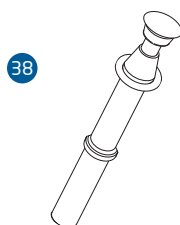
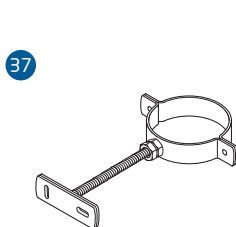
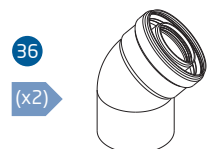
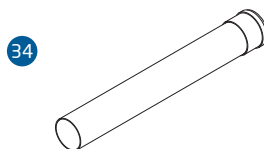
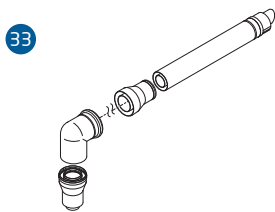
Multifit Flue Group G

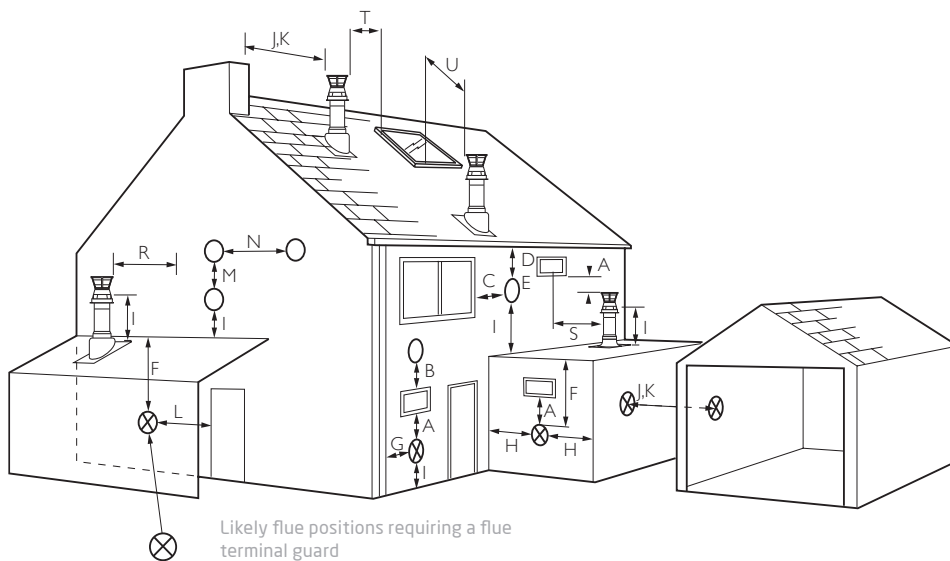
| Item | Description (multifit) flue system | Colour | Specification | Key and OD dimensions | Sales code |
|------|---|--------|------------------|-----------------------|------------|
| 33 | Horizontal flue inc. boiler and terminal adaptors | Black | | 125mm | 5118580 |
| 34 | 1m flue extension | White | 1000mm | 125mm | 5118584 |
| 35 | Flue bend | White | 91.5° | 125mm | 5118588 |
| 36 | Flue bend (pair) | White | 135° | 125mm | 5118597 |
| 37 | Pipe support bracket | White | 125mm flue pipes | 125mm | 5118610 |

Vertical concentric flues Ø 80/125mm

Multifit Flue Group G

| Item | Description (multifit) flue system | Colour | Specification | Key and OD dimensions | Sales code |
|------|------------------------------------|--------|------------------|-----------------------|------------|
| 38 | Vertical flue terminal | Black | | 125mm | 5111078 |
| 34 | 1m flue extension | White | 1000mm | 125mm | 5118584 |
| 35 | Flue bend | White | 91.5° | 125mm | 5118588 |
| 36 | Flue bend (pair) | White | 135° | 125mm | 5118597 |
| 30 | Roof cover plate | | | 125mm | 246143 |
| 39 | Flue vertical adaptor | White | | 100/125mm | 5111070 |
| 31 | Pitched roof flashing | | 25°/55° | 125mm | 5122151 |
| 32 | Flat roof flashing | | | 125mm | 246144 |
| 36 | Pipe support brackets | White | 125mm flue pipes | 125mm | 5118610 |





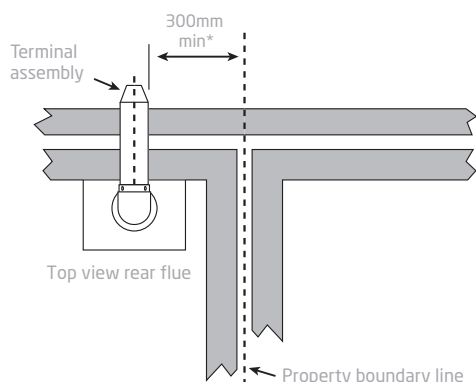
Terminal position with minimum distance

- A¹ Directly below an opening, air brick, opening windows etc
 B¹ Above an opening, air brick, opening window etc
 C¹ Horizontally to an opening, air brick, opening window etc
 D² Below gutters, soil pipes or drain pipes
 E² Below eaves
 F² Below balconies or car port roof
 G² From a vertical drain pipe or soil pipe
 H² From an internal or external corner
 I Above ground, roof or balcony level
 J From a surface or boundary line facing a terminal
 K From a terminal facing a terminal (Horizontal flue)
 L From a terminal facing a terminal (Vertical flue)

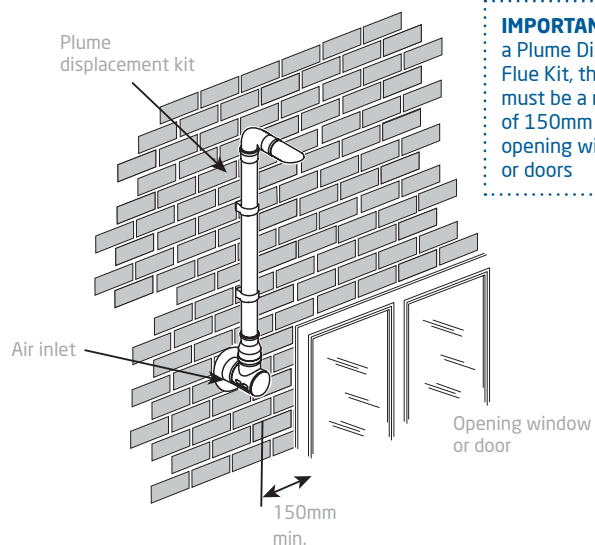
(mm)

| | | |
|---|--|------|
| L | From an opening in a carport (e.g. door, window) into the dwelling | 1200 |
| M | Vertically from a terminal on the same wall | 1500 |
| N | Horizontally from a terminal on the same wall | 300 |
| R | From adjacent wall to flue (vertical only) | 300 |
| S | From an adjacent opening window (vertical only) | 300 |
| T | Adjacent to windows or openings on pitched and flat roofs | 600 |
| U | Below windows or openings on pitched roofs | 2000 |

- In addition, the terminal should be no nearer than 150mm to an opening in the building fabric formed for the purpose of accommodating a built-in element such as a window frame.
- Only ONE 25mm clearance is allowed per installation. If one of the dimensions D, E, F, G or H is 25mm then the remainder MUST be as B.S.5440-1.



NOTE: The distance from a fanned draught appliance terminal installed parallel to a boundary may not be less than 300mm in accordance with the diagram.



IMPORTANT: If fitting a Plume Displacement Flue Kit, the air inlet must be a minimum of 150mm from any opening windows or doors

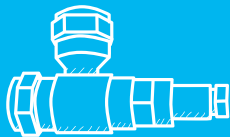
How we can help



Baxi Customer Support

- Team of experts with products at hand to support installation, service and repair
- Further technical support and how-to videos available at **baxi.co.uk**

Call us on **0344 871 1525**



Baxi Genuine Parts

- Approved parts for Baxi products
- Guaranteed quality, safety and reliability
- Nationwide network of approved stockists
- Lifetime support for Baxi products
- Range of heating essentials available

Call our knowledgeable and helpful team on **0344 871 1540** or visit **baxi.co.uk/baxi-genuine-parts.htm** to identify parts and find your nearest stockist



Training

- Practical, hands on training
- Free of charge product training
- A range of specialist courses
- Expert trainers, all accredited, former heating engineers
- Training centres across the UK

Visit **baxi.co.uk/training** or call **0344 335 4207**



Baxi Works

Sign up to **Baxi Works**, Baxi's online loyalty scheme for installers. Benefits include:

- Same or next day engineer call out from Baxi Customer Support*
- Free Gas Safe notification and easy warranty registration
- Scan your barcodes using the Baxi Toolbelt App
- Free annual service reminders sent to your customers on your behalf
- Free listing on baxi.co.uk to receive homeowner leads
- Earn points for every boiler you register

Visit **baxiworks.co.uk** to find out more



Events

Visit Baxi Area Sales Managers at your local merchant for an opportunity to get your hands on the latest Baxi boilers and discuss developments in the heating industry.

For more information and to join us at a merchant local to you, visit **baxievents.co.uk**



Literature

You can order all the literature you need for you and your customers, including:

- Range guides
- Product brochures for consumers
- Installation instructions
- User guides
- Instructions for discontinued products

Call the Baxi literature hotline on **0344 871 1525** or contact your local Baxi Area Sales Manager.

All our literature can be downloaded from our website **baxi.co.uk**



0344 871 1525

Opening hours

Monday - Friday, 8.00am - 6.00pm

Weekends and bank holidays, 8.30am - 2.00pm

We are open 365 days a year.

Please note calls may be monitored or recorded.



baxi.co.uk



info@baxi.co.uk



Baxi

Brooks House

Coventry Road

Warwick CV34 4LL

Follow us



This brochure is printed on paper sourced from well managed forests and other controlled sources, using vegetable based inks. Please recycle this brochure when you have finished with it.

Baxi policy is one of continual improvement and development. The right to change specification and appearance without prior notice is reserved. The reproduction of colours is as accurate as photographic and printing processes allow. The consumer's statutory rights are not affected. e&oe

Baxi range guide/Jun20

BAXI
Make it easy