

D

D

C

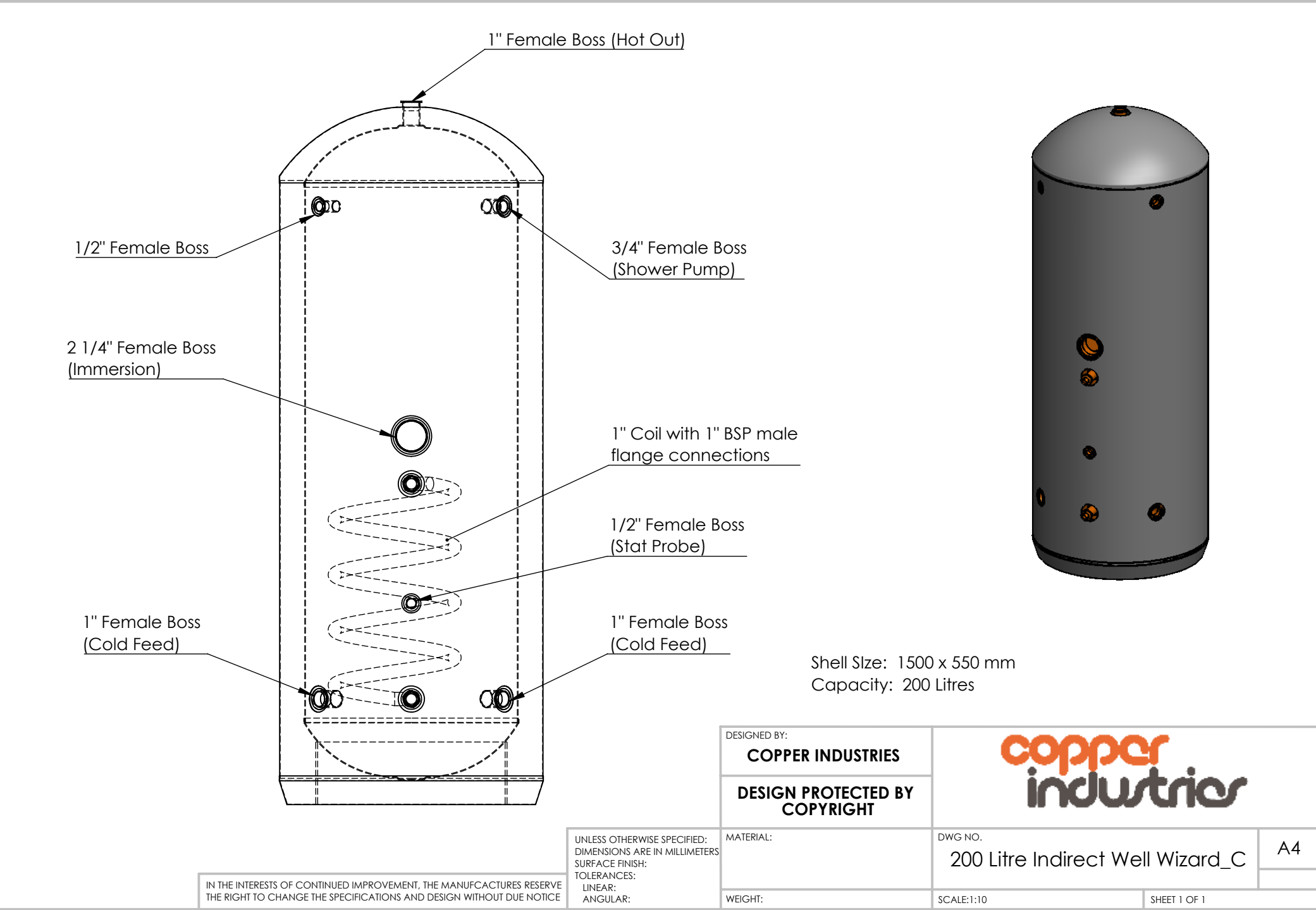
C

B

B

A

A



1/2" Female Boss

1" Female Boss (Hot Out)

3/4" Female Boss
(Shower Pump)

2 1/4" Female Boss
(Immersion)

1" Coil with 1" BSP male
flange connections

1/2" Female Boss
(Stat Probe)

1" Female Boss
(Cold Feed)

1" Female Boss
(Cold Feed)

Shell Size: 1500 x 550 mm
Capacity: 200 Litres

DESIGNED BY:
COPPER INDUSTRIES

**DESIGN PROTECTED BY
COPYRIGHT**

**copper
industries**

MATERIAL:

WEIGHT:

DWG NO.

200 Litre Indirect Well Wizard_C

SCALE:1:10

SHEET 1 OF 1

A4

IN THE INTERESTS OF CONTINUED IMPROVEMENT, THE MANUFACTURES RESERVE
THE RIGHT TO CHANGE THE SPECIFICATIONS AND DESIGN WITHOUT DUE NOTICE

UNLESS OTHERWISE SPECIFIED:
DIMENSIONS ARE IN MILLIMETERS
SURFACE FINISH:
TOLERANCES:
LINEAR:
ANGULAR: