

Doc M Contour 21+ Close Coupled Pack LH

ILLUSTRATED

**S0683** Doc M Contour 21+ close coupled left hand corner pack, WC pan, water saving delay fill cistern with spatula lever, basin, grab rails, hinged support rail with toilet roll holder, seat no cover with retaining buffers, copper tails on TMV3 mixer tap

ILLUSTRATED PRODUCT DETAILS

Weights

**S0683** 69.65 KG

Finishes

**S0683**  White (AC)

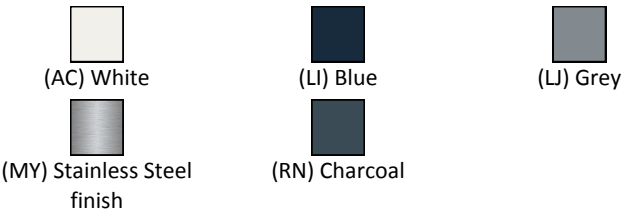
Materials

**S0683** Mixed Material

Capacity

**S0683** 5 litres

FINISH OPTIONS



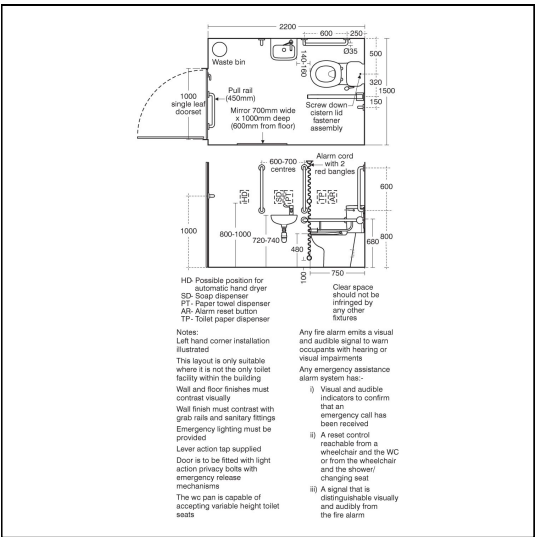
Standards

Vitreous china to BS 3402

BS8300 compliant

Special Notes

Doc M packs are available both right and left hand corner arrangement, illustrated is left hand arrangement. Supplied with layout drawings, detailing the fixing positions necessary for Doc M compliance



ACCREDITATIONS



FEATURES

