

A child in a striped shirt and jeans is jumping rope on a floor with chalkboard patterns. The child is in the middle of a jump, with one foot on the ground and the other in the air. The floor is covered in chalk-drawn numbers and lines, resembling a chalkboard. The child is wearing a white and blue striped long-sleeved shirt and light blue jeans with patches. They are wearing black sneakers. The background is dark and out of focus, showing another person's leg and shoe in the upper right corner.

# Heat Merchants

## SCHOOL SUMMER WORKS SCHEME

---

Tailored Product Solutions

## OUR SERVICES

- School product estimation for pricing and tenders
- Specification team offering specialist advice
- Stock available from 30 branches nationwide
- Staged stock drawdown
- Leading brands and exclusive ranges

The Heat Merchants estimation and specification team have specialist expertise to assist with tailored heating and plumbing product specification for any renovation, build or maintenance works in school settings.

We offer a wide range of solutions from leading brands in the industry to ensure the quality, performance and assurance

that the materials and guarantees provided will last the test of time and will meet all technical requirements.

Speak with your local branch to find out more about our product range and our specialist support services for any School's Summer Works projects.

# Solutions for Schools

## Heat Source

Gas Boilers  
Oil Boilers  
Air to Water Heat Pumps

## Pump Solutions

Grundfos

## Hot Water Solutions

Gas Fired Water Heaters  
Instant Water Heaters  
Hot Water Storage  
Electric Water Heaters

## Heat Emitter

Low Surface Temperature Radiators  
Convactor Radiators  
Underfloor Heating

## Piping Systems

## Wash Room Solutions

Showering  
BasinTaps  
Thermostatic Mixing Valves  
Sanitary Ware  
Accessible Bathrooms

# Heat Merchants

## Contact Us

Contact your local branch for more details or to request a quote.

[commercial@heatmerchants.ie](mailto:commercial@heatmerchants.ie)  
090 6424000

### Business Development Manager

Sanitary Ware, Showering, Brassware  
☞ Accessible Bathrooms

Mark McLoughlin  
086 0402068

[mark.mcloughlin@bathroommerchants.ie](mailto:mark.mcloughlin@bathroommerchants.ie)

**Bathroom  
Merchants**

### Business Development Manager

Heating, Renewables, Hot Water  
Plumbing

Dan Brady  
086 173 6038

[dan.brady@heatmerchants.ie](mailto:dan.brady@heatmerchants.ie)

**Heat  
Merchants**

### National Sales Manager

Your key contact for any enquiries  
or concerns

John O'Shaughnessy  
087 3506119

[john.oshaughnessy@heatmerchants.ie](mailto:john.oshaughnessy@heatmerchants.ie)

**Heat  
Merchants**



## Gas Boilers

We offer a wide range of gas boilers from leading global manufacturers who are renowned for their quality, performance and reliability.

### BAXI Quintia Ace

- 30kW - 160kW (up to 1,200kW cascade)
- Aluminium or stainless steel heat exchanger
- Up to 7 year warranty



### IDEAL Evomax 2

- 30kW - 150kW (up to 900kW cascade)
- Available with an aluminium silicon alloy heat exchanger
- 5 year warranty



### BOSCH Condens 7000 Series

- 50kW - 14kW (up to 860kW cascade)
- ALU-PLUS® heat exchanger with plasmapolymised surface
- 5 year parts and labour warranty





## Oil Boilers



The Firebird Envirogreen Popular high efficiency condensing oil boiler range features a patented heat exchanger design and includes a high performance low NOx Elco burner.

Firebird boilers are built in Ireland from premium quality steel, offering SEDBUK Band A efficiency. The sturdy well-insulated casing minimises heat loss and the compact design has 4 tapping points for ease of installation.

- 44kW - 100kW (up to 400kW cascade)
- High efficiency SEAI HARP 'A' rating
- Up to 5 year warranty



Grant Vortex condensing oil boilers are highly efficient and reliable. The Vortex range is available in 22 models with an award winning heat exchanger to provide some of the highest efficiencies in the market.

Grant oil fired boilers are manufactured in Ireland.

- 15kW - 70kW
- High efficiency SEAI HARP 'A' rating
- Up to 5 year warranty



## Heat Pumps

**Panasonic**  
heating & cooling solutions

Panasonic Aquarea Air to Water heat pumps provide a highly efficient solution for heating and hot water.

The Aquarea M Series offers improved operating performance, even at very low temperatures. This range is the ideal choice for renovations with heating output temperatures of up to 75°C meaning existing radiators can be retained.

The Aquarea M Series utilises the natural refrigerant R290, which has a low GWP of 3 for a sustainable solution.

- 20, 25 and 30kW (up to 300kW cascade)
- Up to 7 year warranty

## Pumping Solutions

**GRUNDFOS**

Grundfos is the global leader within the pump industry, delivering energy-efficient water solutions for use in schools, homes, buildings, industries, utilities, and agriculture.

Grundfos pump systems are designed to fit your application needs, from standard pump kits and units to complete pressure booster packages, and engineered-to-order pumping systems.

Our technical team will design your pump systems to provide maximum reliability, ensuring you get an optimised, energy-efficient and intelligent solution.

- Pumps
- Pressurisation Units
- Expansion Vessels



## Hot Water Solutions

Our range of gas fired water heaters, instantaneous water heaters and calorifiers have high recovery rates, storage options, and flexible flue arrangements for easy installation.

### ANDREWS GAS FIRED WATER HEATERS

- MAXXflo, ECOflo, COMBIflo and SUPAFlo
- Fully modulating stainless steel and glass lined
- Up to 380 litres storage
- Recovery rates of up to 9257 litres at  $\Delta T 50^{\circ}\text{C}$ .
- Low NO<sub>x</sub>, high efficiency and low running costs
- 2 years parts and labour warranty



### HOT WATER STORAGE

We stock a wide range of stainless steel direct, indirect, pre-plumbed and heat pump cylinders to suit any project.



## Electric Water Heaters

### POINT OF USE WATER HEATERS

We can offer a wide range of instantaneous point of use water heaters with under-sink, over-sink and storage models available in various sizes which are ideal for use in canteens and offices.

- Capacity options from 10 to 100 litres

### INSTANT BOILING WATER HEATERS

Instant boiling water heaters are an energy efficient, convenient option for canteens and catering facilities.

- Capacity options from 1.5 - 40 litres





## Heat Emitters

### LOW SURFACE TEMPERATURE RADIATORS



The ISAN Ecolite LSK wall mounted, low water content radiators have been designed to meet the current guidelines for installation in schools. The heat exchanger allows for fast efficient heat up whilst the casing has a smooth front panel finish with rounded edges and corners. The surface temperature of the casing will not exceed 43°C. A pencil proof top grille prevents any objects falling inside the casing.

- Standard steel thickness 1.5mm (2mm also available)
- Standard heights 165/200/300/400/500/600mm
- Standard lengths from 400mm to 2800mm with 100mm increments on request
- Same end connections suitable for wall or floor connection
- Standard RAL9016 other colours on request
- 5 year warranty

### CONVECTOR RADIATORS



Merriott Precision radiators are horizontal or vertical tubular radiators that offer a high quality, robust design manufactured and tested in accordance with EN442 with a standard wall thickness of 1.5mm. Precision radiators offer heat outputs ranging from 74 watts to 7902 watts at  $\Delta T 50^{\circ}\text{C}$ .

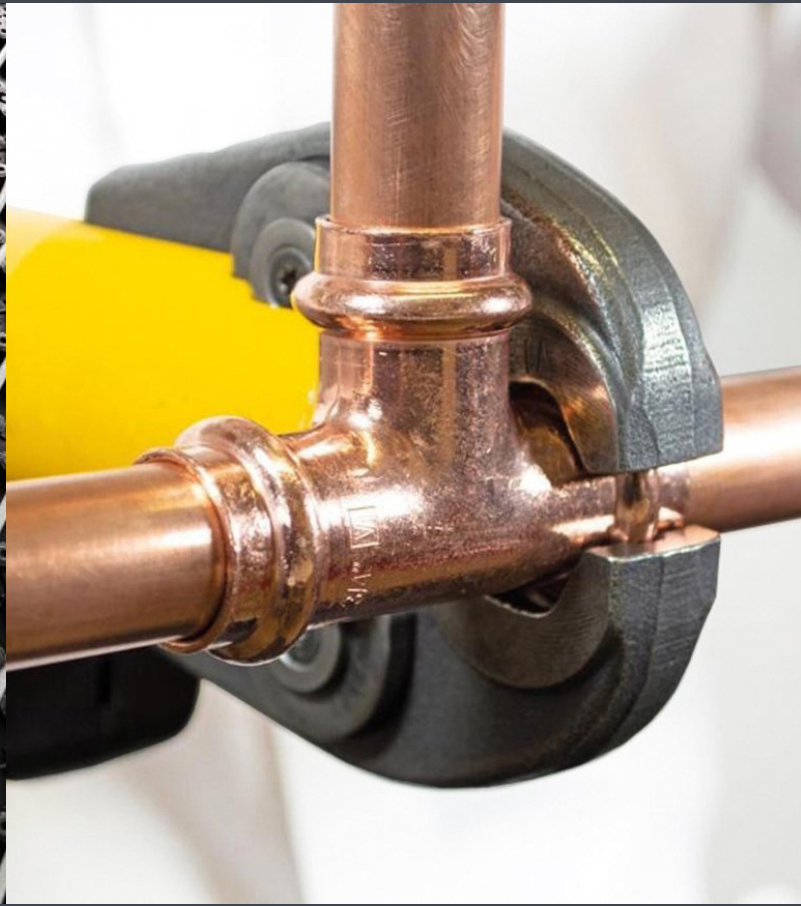
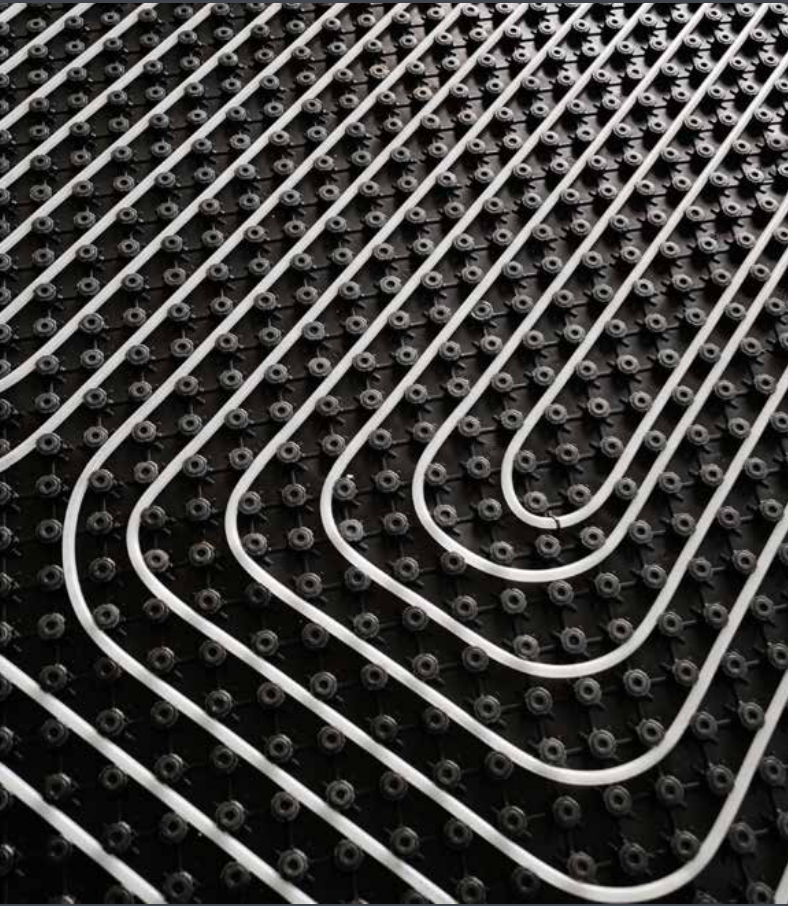
#### Horizontal Sizes

- Heights from 143mm - 868mm
- Lengths 500mm to a max of 3000mm

#### Vertical Sizes

- Heights from 600mm - 3000mm
- Length from 288mm - 868mm
- 10 year warranty





## Underfloor Heating

Heat Merchants can design and supply underfloor heating systems to the residential, commercial and industrial sectors.

Our expert team of design engineers, CAD technicians and system specialists will design a quality system which will provide maximum efficiency and comfort for any new build or retrofit.

Underfloor heating is ideal for sports halls and gyms as it means there are no hazardous projections and wall space is kept free. It integrates easily with company BMS and is compatible with renewable energy sources. The even spread of heat provides a high level of comfort and reduces the quantity of dust particles suspended in the air which benefits those with allergies and breathing difficulties.

## Piping Systems

We offer a complete range of pipe, including copper, stainless steel, multi-layer MLCP and GB tube.

We also offer fluid controls products and quality components for heating, plumbing, air conditioning, heat metering and renewables systems for use in domestic and industrial plants.





## Wash Room Solutions

### SHOWERS

A school changing room calls for safe, efficient, hygienic facilities with shower valves that have been carefully designed to prevent scalding and use water efficiently.

Our extensive range of thermostatic push button, time control showers are suitable for individual or group showers. We also offer vandal resistant shower heads, shower panels and grab rails.

### BASIN TAPS

We have a range of non-concussive, timed flow taps, and electronic taps with infra red sensors which will conserve water and save on the energy required to heat the water. We can also supply a range of thermostatic taps including lever operated ones which are designed to be easy to use for people of all abilities.

### THERMOSTATIC MIXING VALVES

We stock a range of thermostatic mixing valves that offer reliability and easy maintenance.





## Wash Room Solutions

### SANITARY WARE

A school's washrooms must be designed to be safe, easy to clean and functional while also tough and durable. We offer a wide range of sanitary ware to fit any type of installation, with many specialised products from Ideal Standard, that meet the unique demands of the education sector.

### PART M COMPLIANT BATHROOMS

Accessible showering and washroom facilities must be available for students and staff. We can provide a complete range of Doc M compliant WC and shower packs to meet required standards.



## Specialised Bathroom Estimation Service

The Bathroom Merchants Estimation team can provide specification, technical information and pricing which is tailored according to individual project requirements.

Our team will propose solutions that will meet all criteria as set out in building regulations and department guidelines.



**ORDER ONLINE**  
[www.heatmerchants.ie](http://www.heatmerchants.ie)

# Heat Merchants

## HAVE A QUERY?

Contact us on 090 6424000  
[enquiries@heatmerchants.ie](mailto:enquiries@heatmerchants.ie)

## OUR LOCATIONS

Visit [www.heatmerchants.ie](http://www.heatmerchants.ie) for contact details and branch locations



# Bathroom Merchants

a **WOLSELEY** company

Bathroom Merchants provides trade customers with a complete bathroom and showering product range which is readily available through our network of Heat Merchants branches nationwide.

A wide range of stock is on hand for immediate collection or delivery from your local branch with the extended range available from our central warehouse for collection or delivery as soon as the day after you place your order.