

# Fittings & Valves

## Chrome Plated Fittings

U96908	15mm 610	U96912	15mm 618
U96909	22mm 610	U96913	22mm 618
U42293	15mm 612	U42295	15mm 321
U42292	1" x 22mm 612	U80301	15mm 651
U96910	15mm 615	U80302	22mm 651
U96911	22mm 615	U80297	22 x 22 x 15 618
U42294	15mm 617		

## Metric Brass Fittings

U96896	15mm 610	U96906	22 x 15 x 15 618
U96897	22mm 610	U96907	22 x 15 x 22 618
U96898	28mm 610	U10264	28 x 22 x 22 618
U75015	22 x 15 610	U10265	28 x 22 x 28 618
U96899	15mm 615	U10266	28 x 28x 22 618
U96900	22mm 615	U10270	15mm 678A
U96901	28mm 615	U10271	22mm 678A
U96902	15mm 618	U10272	28mm 678A
U96903	22mm 618	U10274	15mm 678B
U96904	28mm 618	U10275	22mm 678B
U96905	22 x22 x 15 618	U10276	28mm 378B

## Brass Microbore Fittings

U84939	10mm 610	U84944	8mm 611
U84943	10 x 8 610	U84946	1/4 x 10 611
U84948	1/2 x 10 610	U84940	10mm 611
U84949	1/2 x 12 610	U96884	1/2 x 10 611
U85141	8mm 610	U88733	1/4 x 10 616
U96889	12mm 610	U96887	10mm 616
U80287	1/2 x 8 610	U41681	1/2 x 10 616
U84941	10mm 615	U84952	10mm 651
U96886	8mm 615	U84953	8mm 651
U96890	12mm 615	U84950	10mm 617
U84942	10mm 618	U96892	8mm 678A
U96888	8mm 618	U96893	10mm 678A
U96891	12mm 618	U96894	8mm 678B
U84945	1/4 x 8 612	U96895	10mm 678B
U84947	1/4 x 10 612	U84955	1/4 Nozzle F
U84951	10mm 612	U84956	1/4 Nozzle M
U96885	1/2 x 10 612		

## Problem Solvers

### Plugs

505112	1/2"
505113	3/4"
505114	1"

### Brass Nipples

U87308	1/2"
U87309	3/4"
U87310	1"
U88729	1/2" x 3"
U88730	1/2" x 6"

### Brass Sockets

505101	3/8"
505102	1/2"
505103	3/4"
505104	1"

### Manual Vent

U87301	112" BSP
U87320	118" BSP
U41551	112" 372RV

### Brass Bushings

505057	1/4" x 1/8"
505059	3/8" x 1/4"
505060	1/2" x 1/8"
505061	1/2" x 1/4"
505055	1/2" x 3/8"
505056	1" x 1/2"
505050	3/4" x 1/2"
505051	1" x 3/4"
505052	1 1/4" x 1"
505053	1 1/2" x 1 1/4"
505063	1 1/4" x 3/4"
505066	1 1/2" x 1"
U88732	2" x 1 1/2"

### Lead Loc

U88731	1/2" x 7lb lead loc
--------	---------------------

## Lever Action Ballvalves

### Heat Merchants – Lever Action Ballvalves For Copper

U83772	1/2" C&C
U83773	3/4" C&C
U83774	1" C&C



### Lever Action Ballvalves For Copper

U41552	1 1/4" C x C
U41553	1 1/2" C x C
U41554	2" C x C

### Lever Action Gas Ballvalves F+F

327901	-
327902	"
327903	3/4"
327904	1"
327905	1 1/4"
327906	1 1/2"
327907	2



### Recessed Gas Ballvalve

U88331	8/10mm Box
U88332	Spare Cover

### Heat Merchants – Compression Gas Ballvalves

U83769	1/2"
U83770	3/4"
U83771	1"



### Gas Ballvalves

U41686	15mm x 8mm
U86432	15mm x 10mm
U41685	10mm
U41686	1/2" x 8mm
U86432	1/2" x 10mm
U41688	8mm x 10mm
U41684	8mm
U41687	8mm Angled
U74499	15mm



### Heat Merchants – Lever Action Female Ballvalves

U83775	1/2"
U83776	3/4"
U83777	1"
U83778	1 1/4"
U83779	1 1/2"



# Fittings & Valves

## Gate Valves & Stopcocks

### Heat Merchants – Gate Valves 367's

U83755	1/2"
U83756	3/4"
U83757	1"



### Gun Barrel (FXF)

U84772	1/2"
U84773	3/4"
U42391	1"
U84775	1.1/4"
U84776	1.1/2"
U84777	2"



### Heat Merchants – 367 CXC Heavy Valve BS5154

U88974	1/2"
U88975	3/4"
U88976	1"



### Heat Merchants – Stop Cocks

U83781	1/2"
U83782	3/4"



### Pegler 1068 Gate Valves

414400	1/2"
414401	3/4"
414402	1"
414403	1 1/4"
414404	1 1/2"
414405	2"



## Service & Isolating Valves

### Isolating Valves

U81222	15mm heavy isolating valve
U81223	15mm isolating valve
U81218	3/4" CxC isolating valve
U83760	1/2" CxC isolating valve angled



### Service Valves

U81215	15mm & 1/2" Angle
U81217	15mm & 1/2" Straight



## Non Return Valves

### Heat Merchants – Non Return Valves (flap)

U84778	1/2"
U84779	3/4"
U84780	1"



### Heat Merchants - Non Return Valves (spring)

U84781	1/2"
U84782	3/4"
U84783	1"



### Heat Merchants - Non Return Valves For Copper (spring)

U65159	1/2"
U65160	3/4"
U65161	1"



## Circulating Pump Valves

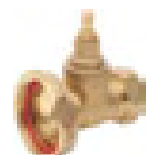
### Heat Merchants – Circulating Pump Valves

U83767	3/4" CxC
U83768	1" CxC



### Heat Merchants – Circulating Gate Pump Valves

U83906	3/4"
U83907	1"



## BSS Ballvalves

### Ballvalves

U42397	1/2" x 3" Tail
U42396	3/4"
U88330	1/2"
U87852	1"



## Fire Valves, Safety Valves, Vents & Filters

### Firevalves

412080	10mm 3/8" wheel head firevalve
--------	--------------------------------



### KBB Firevalves

469179	Teddington 1.5m fire valve
468184	Teddington 2m fire valve
469185	Teddington 3m fire valve
469186	Teddington 6m fire valve
469187	Teddington 9m fire valve



### Tiger Loops

U68997	Tiger loop de aerator
--------	-----------------------



### Safety Valves

U64924	1/2" side outlet 3 bar
U64925	1/2" side outlet 6 bar
U64926	3/4" side outlet 3 bar
U84067	1/2" no 2 c/w gauge 3 bar



### Oil Filters

U64874	Oil filter
--------	------------



### Auto Air Vent

U84364	1/2"
U87302	1/8"
N01011	1/2"



### Draw Off Cocks

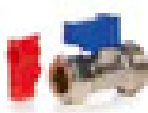
U82548	1/2"
--------	------



## Washing Machine Valves

### Heat Merchants – Washing Machine Valves

U83763	1/2" Straight
U83764	1/2" Angled
U83765	1/2" Tee



# Fittings & Valves

## Hose Union Taps

### Heat Merchants – Hose Union Tap

U83783	1/2"
U83784	3/4"
U10441	1/2 HU Nut + Tail
U87322	3/4" HU Nut +Tail



### Lever Action Hose Union

U84932	1/2"
U84933	3/4"



## Flexible Tap Connectors

### Heat Merchants – Flexible Tap Connectors

U83798	1/2" x 300mm
U83799	3/4" x 300mm
U83800	1/2" x 500mm
U83801	3/4" x 500mm
U83802	1/2" x 300mm c/w Isolating Valve
U83803	3/4" x 300mm c/w Isolating Valve
U83804	1/2" x 500mm c/w Isolating Valve
U83805	3/4" x 500mm c/w Isolating Valve



## Foot Valves & Y Strainers

### Foot Valves

U88726	1"
U88727	1 1/4"
U88728	1 1/2"



### Y Strainers

U88720	1/2"
U88721	3/4"
U88722	1"
U88723	1 1/4"
U88724	1 1/2"
U88725	2"



## Screwed Steel Fittings

### Nipple

#### Black

#### Galv

3/8"	U87607	U87427
1/2"	U87608	U87428
3/4"	U87609	U87429
1"	U87610	U87430
1 1/4"	U87611	U87431
1 1/2"	U87612	U87432
2"	U87613	U87433

### Female Elbow

#### Black

#### Galv

1/2"	U87555	U87339
3/4"	U87556	U87340
1"	U87557	U87341
1 1/4"	U87558	U87342
1 1/2"	U87559	U87343
2"	U87560	U87344

### Socket

#### Black

#### Galv

1/2"	U87600	U87420
3/4"	U87601	U87421
1"	U87602	U87422
1 1/4"	U87603	U87423
1 1/2"	U87604	U87424
2"	U87605	U87425

### Tee

#### Black

#### Galv

3/8"	U87568	U87365
1/2"	U87569	U87366
3/4"	U87570	U87367
1"	U87571	U87368
1 1/4"	U87572	U87369
1 1/2"	U87573	U87370
2"	U87574	U87371

## Screwed Steel Fittings

Union	Black	Galv
½"	U87627	U87448
¾"	U87628	U87449
1"	U87629	U87550
1 ¼"	U87630	U87551
1 ½"	U87631	U87552
2"	U87632	U87553

MF Elbow	Black	Galv
½"	U87562	U87347
¾"	U87563	U87348
1"	U87564	U87349
1 ¼"	U87565	U87350
1 ½"	U87566	U87351
2"	U87567	U87352

Plug	Black	Galv
½"	U87615	U87436
¾"	U87616	U87437
1"	U87617	U87438
1 ¼"	U87618	U87439
1 ½"	U87619	U87440
2"	U87620	U87441

Cap	Black	Galv
½"	U87621	U87442
¾"	U87622	U87443
1"	U87623	U87444

Reducing Nipple	Black	Galv
1" x ½"	U87594	U87411
1" x ¾"	U87595	U87412
½" x 3/8"	U87592	U87409
¾" x ½"	U87593	U87410

Reducing Bushing	Black	Galv
¾" x ½"	U87639	U87393
1" x ¾"	U87640	U87395
1 ¼" x ¾"	U87583	U87397
1 ½" x ¾"	U87584	U87400
1 ½" x 1"	U87585	U87401
2" x 1"	U87589	U87405
2" x 1 ¼"	U87590	U87406
1" x ½"	U87582	U87394
2" x 1 ½"	U87591	U87407

Reducing Tee	Black	Galv
¾" x ½"	U87575	U87374
1" x ½"	U87576	U87375
1" x ¾"	U87577	U87376



# SECTION 3

## RADIATORS, CONVECTORS, TOWEL WARMERS AND RADIATOR VALVES

### Contents:

Heat Merchants Savanna Radiators.....	43	Myson Premier HE.....	50
Stelrad Compact with Style.....	44	Solo Convectors & Myson Kickspace Heaters.....	51
Stelrad LST.....	45	Towel Warmers.....	52-53
Stelrad Planar.....	46	Heat Merchants Radiator Valves.....	54
Stelrad Classic Column.....	47	Pegler Radiator Valves.....	54
Heat Merchants Comby Tubular Steel Radiators.....	48	Myson Radiator Valves.....	54
Myson Premier Compact.....	49	Danfoss Radiator Valves.....	54

## Heat Merchants Savanna

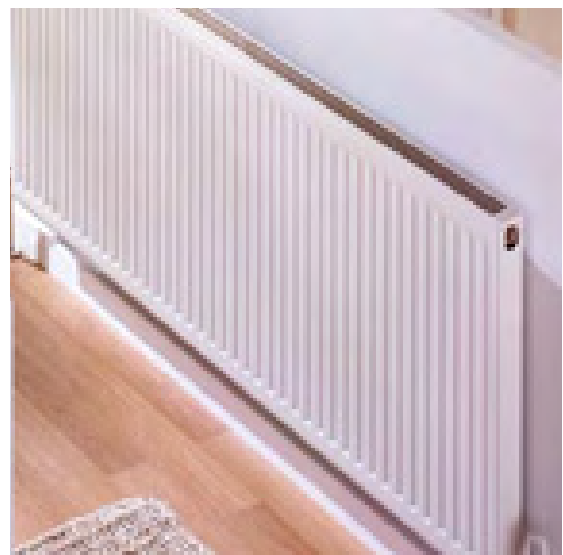
### Range and Output Information

Height	Length mm	Sections	K1				K2					
			Cat No.	Watts ΔT50°C	BTU/HR ΔT50°C	Watts ΔT62°C	BTU/HR ΔT62°C	Cat No.	Watts ΔT50°C	BTU/HR ΔT50°C	Watts ΔT62°C	BTU/HR ΔT62°C
300 (12")	400	12	U85112	204	695	271	923	U85412	393	1340	522	1783
	600	18	U85118	305	1042	406	1385	U85418	589	2010	784	2674
	800	24	U85124	407	1389	541	1846	U85424	786	2680	1045	3566
	1000	30	U85130	509	1737	676	2308	U85430	982	3351	1306	4457
	1200	36	U85136	611	2084	812	2769	U85436	1178	4021	1567	5348
	1400	42	U85142	713	2431	947	3231	U85442	1375	4691	1829	6240
	1600	48	U85148	814	2779	1082	3692	U85448	1571	5361	2090	7131
	1800	54	U85154	916	3126	1217	4154	U85454	1768	6031	2351	8022
2000	60	U85160	1018	3473	1353	4616	U85460	1964	6701	2612	8914	
500 (151/2")	400	12	U85212	333	1137	441	1504	U85512	598	2039	796	2715
	500	15	U85215	417	1421	551	1880	U85515	747	2549	995	3394
	600	18	U85218	500	1705	661	2256	U85518	896	3059	1194	4073
	700	21	U85221	583	1990	772	2633	U85521	1046	3568	1393	4752
	800	24	U85224	666	2274	882	3009	U85524	1195	4078	1592	5431
	900	27	U85227	750	2558	992	3385	U85527	1345	4588	1791	6110
	1000	30	U85230	833	2842	1102	3761	U85530	1494	5098	1990	6789
	1100	33	U85233	916	3126	1212	4137	U85533	1643	5607	2189	7468
	1200	36	U85236	1000	3411	1323	4513	U85536	1793	6117	2388	8146
	1300	39	U85239	1083	3695	1433	4889	U85539	1942	6627	2587	8825
	1400	42	U85242	1166	3979	1543	5265	U85542	2092	7137	2786	9504
	1500	45	U85245	1250	4265	1653	5640	U85545	2241	7646	2984	10181
1600	48	U85248	1333	4548	1764	6017	U85548	2390	8156	3183	10862	
1800	54	U85254	1499	5116	1984	6769	U85554	2689	9176	3581	12220	
2000	60	U85260	1666	5684	2204	7521	U85560	2988	10195	3979	13577	
600 (24")	400	12	U85312	392	1338	518	1767	U85612	693	2365	923	3149
	500	15	U85315	490	1672	647	2207	U85615	866	2955	1154	3937
	600	18	U85318	588	2006	776	2649	U85618	1039	3546	1385	4725
	700	21	U85321	686	2341	906	3090	U85621	1212	4137	1616	5512
	800	24	U85324	784	2675	1035	3532	U85624	1386	4728	1846	6300
	900	27	U85327	882	3009	1165	3973	U85627	1559	5319	2077	7087
	1000	30	U85330	980	3344	1294	4415	U85630	1732	5910	2308	7875
	1100	33	U85333	1078	3678	1423	4856	U85633	1905	6501	2539	8662
	1200	36	U85336	1176	4013	1553	5298	U85636	2078	7092	2770	9450
	1400	42	U85342	1372	4681	1812	6181	U85642	2425	8273	3231	11025
1600	48	U85348	1568	5350	2070	7064	U85648	2771	9455	3693	12600	
1800	54	U85354	1764	6019	2329	7947	U85654	3118	10637	4154	14175	
2000	60	U85360	1960	6688	2588	8830	U85660	3464	11819	4616	15750	
900 (36")	400	12	-	-	-	-	-	U85712	958	3269	1280	4367
	600	18	-	-	-	-	-	U85718	1437	4903	1920	6550
	800	24	-	-	-	-	-	U85724	1916	6537	2560	8733

All radiator outputs are calculated @DT50°C inline with the European BS EN 442 testing standard.

Strictly controlled independent laboratory testing ensures that all Savanna radiators are guaranteed to perform to a maximum working pressure of 116 psi (8 bar) and conform to BS EN 442 - the European Standard for radiators.

As a measure of the all round dependable quality and performance, the Savanna comes complete with a 10 year manufacturer's warranty



## Stelrad Compact with Style

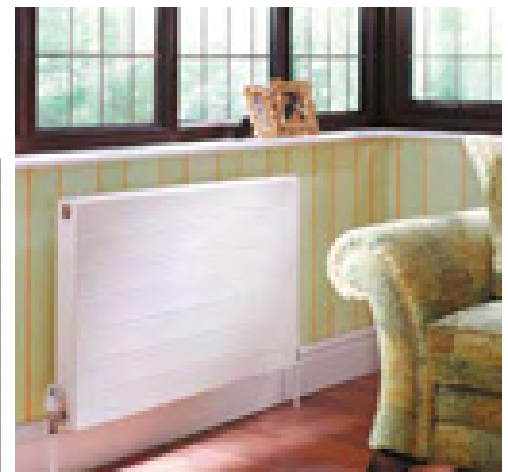
### Range and Output Information



Height	Length mm	Sections	K1				K2					
			Cat No.	Watts $\Delta T50^{\circ}\text{C}$	BTU/HR $\Delta T50^{\circ}\text{C}$	Watts $\Delta T62^{\circ}\text{C}$	BTU/HR $\Delta T62^{\circ}\text{C}$	Cat No.	Watts $\Delta T50^{\circ}\text{C}$	BTU/HR $\Delta T50^{\circ}\text{C}$	Watts $\Delta T62^{\circ}\text{C}$	BTU/HR $\Delta T62^{\circ}\text{C}$
300 (12")	500	15	273000	235	802	312	1065	273030	449	1532	596	2035
	1000	30	273001	470	1604	624	2130	273031	898	3064	1193	4070
	1400	42	273002	658	2245	874	2982	273032	1257	4289	1669	5697
	2000	60	273003	940	3207	1248	4260	273033	1796	6128	2385	8140
500 (151/2")	400	12	273010	298	1017	396	1351	273040	555	1894	737	2515
	600	18	273011	448	1529	595	2030	273041	833	2842	1106	3775
	800	24	273012	597	2037	793	2706	273042	1110	3787	1474	5031
	1000	30	273013	746	2545	991	3381	273043	1388	4736	1843	6291
	1200	36	273014	895	3054	1189	4056	273044	1666	5684	2212	7551
	1400	42	273015	1044	3562	1386	4732	273045	1943	6630	2580	8806
	1600	48	273016	1194	4074	1586	5411	273046	2221	7578	2949	10066
	1800	54	273017	1343	4582	1784	6087	273047	2498	8523	3317	11321
	2000	60	273018	1492	5091	1981	6762	273048	2776	9472	3687	12581
600 (24")	400	12	273020	348	1187	462	1577	273050	640	2184	850	2901
	600	18	273021	522	1781	693	2366	273051	961	3279	1276	4355
	800	24	273022	696	2375	924	3154	273052	1281	4371	1701	5806
	1000	30	273023	870	2968	1155	3943	273053	1601	5463	2126	7256
	1200	36	273024	1044	3562	1386	4732	273054	1921	6554	2551	8706
	1400	42	273025	1218	4156	1618	5520	273055	2241	7646	2976	10157
	1600	48	273026	1392	4750	1849	6309	273056	2562	8742	3402	11611
	1800	54	273027	1566	5343	2080	7097	273057	2882	9833	3827	13062
2000	60	273028	1740	5937	2311	7886	273058	3202	10925	4252	14512	

Height	Length mm	Sections	P+				K2					
			Cat No.	Watts $\Delta T50^{\circ}\text{C}$	BTU/HR $\Delta T50^{\circ}\text{C}$	Watts $\Delta T62^{\circ}\text{C}$	BTU/HR $\Delta T62^{\circ}\text{C}$	Cat No.	Watts $\Delta T50^{\circ}\text{C}$	BTU/HR $\Delta T50^{\circ}\text{C}$	Watts $\Delta T62^{\circ}\text{C}$	BTU/HR $\Delta T62^{\circ}\text{C}$
200 (8")	500	15	273080	242	824	321	1094	273090	307	1047	408	1390
	1000	30	273081	483	1648	641	2189	273091	614	2095	815	2782
	1400	42	273082	676	2307	898	3064	273092	860	2933	1142	3895
	2000	60	273083	966	3296	1283	4377	273093	1228	4190	1631	5564

Height	Length mm	Sections	Vertical P2				
			Cat No.	Watts $\Delta T50^{\circ}\text{C}$	BTU/HR $\Delta T50^{\circ}\text{C}$	Watts $\Delta T62^{\circ}\text{C}$	BTU/HR $\Delta T62^{\circ}\text{C}$
1600 (64")	300	9	273060	707	2412	939	3204
	500	15	273061	1062	3624	1410	4813
	600	18	273062	1228	4190	1631	5566
1800 (72")	300	9	273065	785	2678	1042	3558
	500	15	273066	1180	4026	1567	5348
	600	18	273067	1364	4654	1811	6182
2000 (80")	300	9	273070	862	2941	1145	3907
	500	15	273071	1295	4419	1720	5869
	600	18	273072	1498	5111	1989	6789
2400 (96")	300	9	273075	1011	3450	1343	4582
	500	15	273076	1520	5186	2019	6889
	600	18	273077	1757	5995	2333	7963



The new Compact Radiator with Style bridges the gap between standard radiators and the more expensive designer models.

If you are working to a tight budget but require a radiator that is different, and can add a new dimension to a room, then you have found it with the Compact with Style.

Underneath the good looks is a radiator guaranteed to provide the superb performance you would expect from the market leader.

Strictly controlled independent laboratory testing ensures that all radiators are guaranteed to perform to a maximum working pressure of 116 psi (8 bar), and conform to BSEN 442, the European Standard for radiators.

As a measure of the all round dependable quality and performance, the Compact with Style comes complete with a 5 Year Warranty.

There are 44 models in the standard range, with heights of 300mm, 500mm and 600mm and lengths from 400mm to 2000mm.

For applications where space utilisation is more difficult there is a range of 12 vertical models with 4 heights from 1600mm to 2400mm, and a range of 8 Lo-line models with one height of 200mm and four lengths from 500mm to 2000mm.

With the Compact with Style range, you should find a size and style to fit the most challenging application.

## Stelrad LST (Low Surface Temperature)

### Range and Output Information

Height	Emitter Height mm	Overall Length mm	K1			P+			K2		
			Cat No.	Watts	BTU/HR	Cat No.	Watts	BTU/HR	Cat No.	Watts	BTU/HR
500 (20")	300	560	216000	196	668	216008	284	969	216016	348	1188
	300	760	216001	293	1001	216009	426	1454	216017	522	1781
	300	960	216002	391	1335	216010	568	1938	216018	696	2375
	300	1160	216003	489	1669	216011	710	2423	216019	870	2969
	300	1360	216004	587	2003	216012	852	2908	216020	1044	3563
	300	1560	216005	685	2336	216013	994	3392	216021	1218	4157
	300	1760	216006	782	2670	216014	1136	3877	216022	1392	4751
650 (26")	450	560	216024	290	990	216032	386	1319	216040	478	1631
	450	760	216025	435	1485	216033	580	1978	216041	717	2447
	450	960	216026	580	1979	216034	773	2637	216042	956	3263
	450	1160	216027	725	2474	216035	966	3297	216043	1195	4078
	450	1360	216028	870	2969	216036	1159	3956	216044	1434	4894
	450	1560	216029	1015	3464	216037	1352	4615	216045	1673	5710
	450	1760	216030	1160	3959	216038	1546	5275	216046	1912	6525
800 (32")	600	560	216048	365	1246	216056	501	1709	216064	615	2098
	600	760	216049	548	1870	216057	751	2564	216065	922	3147
	600	960	216050	730	2493	216058	1002	3418	216066	1230	4196
	600	1160	216051	913	3116	216059	1252	4273	216067	1537	5245
	600	1360	216052	1096	2739	216060	1502	5127	216068	1844	6295
	600	1560	216053	1278	4362	216061	1753	5982	216069	2152	7344
	600	1760	216054	1461	4985	216062	2003	6837	216070	2459	8393
	600	1960	216055	1643	5609	216063	2254	7691	216071	2767	9442

All radiator outputs are calculated @DT50°C inline with the European BS EN 442 testing standard.

	K1			P+			K2		
	500	650	800	500	650	800	500	650	800
Overall Height	500	650	800	500	650	800	500	650	800
Emitter Height	300	400	500	300	400	500	300	450	500
W/m at 75/65/20	507	661	839	727	969	1153	904	1141	1395
n-coefficients	1.26	1.35	1.32	1.32	1.32	1.34	1.31	1.34	1.36
Heated Surface Area (m2)	2.09	2.95	3.8	2.44	3.37	4.31	3.51	4.92	6.33
Weight (kg/m)	9.31	12.78	16.24	14.29	19.46	24.63	16.18	22.87	28.93
Water Contents (l/m)	1.89	2.34	2.8	3.7	4.67	5.63	3.7	4.67	5.63

Overall Height	Emitter Height	SURFACE (m <sup>2</sup> ) (average per section)			VOLUME (litres) (average per section)			DRY WEIGHT (kg) (average per section)		
		K1	P+	K2	K1	P+	K2	K1	P+	K2
500	300	0.06196	0.08646	0.12392	0.056	0.11	0.11	0.28	0.5	0.56
650	450	0.09839	0.13444	0.19678	0.084	0.17	0.17	0.43	0.76	0.86
800	600	0.13485	0.18246	0.2697	0.097	0.19	0.19	0.58	1.02	1.16

The LST Standard is a new low surface temperature product that offers installers flexibility and simple product selection significantly reducing cost.

Safety grilles are supplied as standard and can be assembled to run full width, or simply to cover pipes on one side only.

Each Stelrad LST Standard has an attractive, flat panel outer casing which is totally reversible to allow piping flexibility. Simple and quick to install, the casing is held by security fittings to prevent unauthorised access to the emitter accommodated inside with a unique seam fixing bracket system.

The emitter itself provides high outputs through convection, for outstanding heating performance.



# Radiators

## Stelrad Planar

### Range and Output Information

			K1				K2					
Height	Length mm	Sections	K1				K2					
			Cat No.	Watts ΔT50°C	BTU/HR ΔT50°C	Watts ΔT62°C	BTU/HR ΔT62°C	Cat No.	Watts ΔT50°C	BTU/HR ΔT50°C	Watts ΔT62°C	BTU/HR ΔT62°C
300 (12")	500	15	212015	235	802	312	1065	212415	465	1587	618	2107
	1000	30	212030	469	1600	623	2125	212430	929	3170	1234	4209
	1400	42	212042	657	2242	872	2977	212442	1301	4439	1728	5895
	2000	60	212060	938	3200	1246	4250	212460	1858	6339	2467	8419
400 (16")	400	12	212112	250	853	332	1133	212512	471	1607	625	2134
	600	18	212118	376	1283	499	1704	212518	706	2409	938	3199
	800	24	212124	501	1709	665	2270	212524	942	3214	1251	4268
	1000	30	212130	626	2136	831	2836	212530	1177	4016	1563	5333
	1200	36	212136	751	2562	997	3403	212536	1412	4818	1875	6398
	1400	42	212142	876	2989	1163	3969	212542	1648	5623	2189	7467
	1600	48	212148	1002	3419	1331	4540	212548	1883	6425	2501	8532
	1800	54	212154	1127	3845	1497	5107	212554	2119	7230	2814	9601
500 (15 1/2")	400	12	212212	310	1058	412	1405	212612	564	1924	749	2556
	600	18	212218	464	1583	616	2102	212618	847	2890	1125	3838
	800	24	212224	619	2112	822	2805	212624	1129	3852	1499	5116
	1000	30	212230	774	2641	1028	3507	212630	1411	4814	1874	6393
	1200	36	212236	929	3170	1234	4209	212636	1693	5777	2248	7671
	1400	42	212242	1084	3699	1440	4912	212642	1975	6739	2623	8949
	1600	48	212248	1238	4224	1644	5610	212648	2258	7704	2999	10231
	1800	54	212254	1393	4753	1850	6312	212654	2540	8666	3373	11509
600 (24")	400	12	212312	364	1242	483	1649	212712	654	2231	869	2963
	600	18	212318	547	1866	726	2479	212718	980	3344	1301	4441
	800	24	212324	729	2487	968	3303	212724	1307	4459	1736	5922
	1000	30	212330	911	3108	1210	4128	212730	1634	5575	2170	7404
	1200	36	212336	1093	3729	1452	4953	212736	1961	6691	2604	8886
	1400	42	212342	1275	4350	1693	5777	212742	2288	7807	3038	10367
	1600	48	212348	1458	4975	1936	6606	212748	2614	8919	3471	11844
	1800	54	212354	1640	5596	2178	7431	212754	2941	10035	3906	13326
2000	60	212360	1822	6217	2420	8256	212760	3286	11212	4364	14889	

All radiator outputs are calculated @DT50°C inline with the European BS EN 442 testing standard.

The attractive flat, smooth surface and elegant integrated top grilles and side panels of the Planar hide imaginative features that provide extra flexibility and ease of installation.

With 6 tappings the Planar range allows the addition of integrated valve systems, giving multiple flexibility on any application and to make installation quick and simple there are 50mm centre connections on all radiator sizes.

For commercial environments where flexibility of piping is an important facility the Planar is the perfect solution. The additional tappings and pipework are flush with the base of the radiator so that they cannot be seen when normal piping such as Top Bottom Opposite End (TBOE) is required.

Convectors are precision welded directly onto the waterways to give greater efficiency and economy. All tappings are perfectly aligned, with best quality nickel-plated plugs and vents and the high definition pressings ensure smooth edges and corners.

The perfect solution for all prestigious heating applications, the Planar comes complete with a 5 year Manufacturers Warranty as a measure of the all round dependable quality and performance.



## Stelrad Classic Column

### Range and Output Information

Height mm	Length mm	Sections	Columns	Cat No.	Watts ΔT50°C	BTU/HR ΔT50°C	Watts ΔT62°C	BTU/HR ΔT62°C	
300 (12")	414	9	3	273500	288	983	377	1286	
	598	13	3	273501	416	1420	544	1856	
	828	18	3	273502	576	1966	754	2573	
	1012	22	3	273503	704	2403	921	3142	
	1242	27	3	273504	864	2949	1131	3859	
	1426	31	3	273505	992	3385	1298	4429	
	1840	40	3	273506	1280	4368	1675	5715	
	414	9	4	273510	377	1287	493	1682	
	598	13	4	273511	545	1859	713	2433	
	828	18	4	273512	754	2574	987	3368	
	1012	22	4	273513	922	3146	1206	4115	
	1242	27	4	273514	1131	3861	1480	5050	
500 (20")	598	13	2	273521	499	1704	653	2228	
	828	18	2	273522	691	2359	904	3084	
	1012	22	2	273523	845	2883	1105	3770	
	1242	27	2	273524	1037	3538	1357	4630	
	414	9	3	273530	464	1585	608	2074	
	598	13	3	273531	671	2289	878	2996	
	828	18	3	273532	929	3170	1215	4146	
	1012	22	3	273533	1135	3874	1485	5067	
	1242	27	3	273534	1393	4755	1823	6220	
	1426	31	3	273535	1600	5459	2093	7141	
	1840	40	3	273536	2064	7044	2701	9216	
	414	9	4	273540	608	2076	798	2723	
	598	13	4	273541	879	2999	1152	3931	
	828	18	4	273542	1217	4153	1596	5446	
	1012	22	4	273543	1487	5076	1950	6653	
	1242	27	4	273544	1825	6229	2393	8165	
600 (24")	598	13	2	273551	589	2010	771	2631	
	828	18	2	273552	815	2783	1067	3641	
	1012	22	2	273553	997	3401	1304	4449	
	1242	27	2	273554	1223	4174	1600	5459	
	414	9	3	273560	548	1871	719	2453	
	598	13	3	273561	792	2702	1038	3542	
	828	18	3	273562	1096	3741	1437	4903	
	1012	22	3	273563	1340	4572	1757	5995	
	1242	27	3	273564	1644	5612	2156	7356	
	1426	31	3	273565	1888	6443	2476	8448	
	1840	40	3	273566	2436	8314	3194	10898	
	414	9	4	273550	718	2451	944	3221	
	598	13	4	273571	1037	3540	1363	4651	
	828	18	4	273572	1436	4902	1888	6442	
	1012	22	4	273573	1756	5992	2307	7871	
	1242	27	4	273574	2155	7353	2831	9659	
	750 (30")	828	18	3	273580	1337	4564	1754	5985
		1012	22	3	273581	1635	5579	2143	7312
1242		27	3	273582	2006	6846	2631	8977	
1426		31	3	273583	2303	7861	3020	10304	
1840		40	3	273584	2972	10143	3897	13297	
414		9	4	273590	877	2992	1152	3931	
598		13	4	273591	1266	4321	1664	5678	
828		18	4	273592	1753	5983	2304	7861	
1012		22	4	273593	2143	7313	2816	9608	
1242	27	4	273594	2630	8975	3456	11792		
1800 (72")	322	7	2	273620	868	2962	1151	3927	
	414	9	2	273621	1116	3809	1479	5046	
2000 (80")	322	7	2	273600	966	3297	1280	4367	
	414	9	2	273601	1242	4239	1646	5616	
2500 (100")	322	7	2	273610	1197	4085	1583	5401	
	414	9	2	273611	1539	5252	2036	6947	

All radiator outputs are calculated @DT50°C inline with the European BS EN 442 testing standard.

For a chic solution that can accentuate the use of traditional materials, enhance a contemporary or period appearance, the Classic Column is the perfect choice. The strength of steel construction is matched by outstanding heating performance, whilst a wide choice of colour options is available to harmonise with the boldest or most neutral of décors.



## Heat Merchants Comby Tubular Steel Radiators

### Range and Output Information

Code	Nr of Columns	Height (mm)	Nr of sections	Width (mm)	Depth (mm)	Weight (mm)	Thermal output in Watt
U80786	3	500	14	630	107	16.8	732
U80787	3	500	18	810	107	21.6	941
U80788	3	500	22	990	107	26.4	1150
U80789	3	500	26	1170	107	31.2	1360
U80790	3	500	30	1350	107	36	1569
U80791	2	2000	8	360	66	22.32	1110
U80792	2	2000	12	540	66	33.48	1664
U80793	4	500	27	1215	148	44.55	1836
U80794	4	500	31	1395	148	51.15	2108

Extra Sections							
U80795	3	500	extra 2	90	107	2.4	104
U80796	2	2000	extra 2	90	66	5.58	277
U80797	4	500	extra 2	90	148	3.3	136

Thermal outputs - here expressed in W or At 50°C - are certified according to European standard EN442 and CE

Accessories	
U80798	Standard blister pack complete
U80799	Rad wall brackets white
U80802	Floor mounted brackets per pair
U80803	Internal thread nipples
U80804	O'ring gasket



### Heat Merchants Comby® Elegance & Innovation

The Comby radiator is always up to the task. The Comby range of radiators is available in a number of colours to suit your needs. It is easy to assemble, without seal problems and with many possibilities of changes through the years. This innovating and glossy radiator is manufactured using techniques that guarantee an invisible welding and an enduring and resistant paint.

#### Essential Characteristics

**Linearity:** The Comby will fit with any household furnishing with neat lines and very well-finished details. Every house has its proper solution. The essential, rounded and glossy aesthetics blends with any household furnishings.

**Composable and decomposable:** Comby can be assembled immediately, easily and rapidly.

**Manufacturing:** Welding is invisible. The final product does not show any interruption in its neat and elegant lines.

**Painting:** The powder coating painting protects from the outside aggressions and helps the radiator to remain perfect for years.

**Details:** The polishing of the o-ring guarantees a perfect seal and a full connection of each element to the next.

**Colours:** Many colours are available so that even the most classic radiator becomes sophisticated and special. Basic colour is white RAL 9010.

### Manufacturing Characteristics

- Tubular steel radiator Comby is manufactured with pressed steel heads, that are 1.5mm thick, and with steel pipes that are 25mm in diameter and 1.2mm thick.
- Each element is individually threaded with a hub of the nominal dimension of 1" gaz in diameter.
- The heads have a bending radius of 20mm.
- The seal is tested twice along the production cycle: once on the single element and once on the complete battery at 10.5 bar as requested by Euronorm EN 442.
- Maximum working pressure is 8 bar.
- Maximum working temperature is 95°C or 203°F.
- Each element is protected and cleaned thanks to a phosphatizing treatment; then, it is painted by epoxy powder coating.
- The battery is protected against shocks by packing it with 8 corners and then by wrapping it in shrink wrap.
- Every Comby® radiator is CE certified.

## Myson Premier Compact

### Range and Output Information

Height	Length mm	Single Convector Type 11					Double Convector Type 22				
		Cat No.	Watts T50deg C	BTU/HR T50deg C	Watts T62 degC	BTU/HR T62 degC	Cat No.	Watts T50deg C	BTU/HR T50deg C	Watts T62 degC	BTU/HR T62 degC
300 (12")	400	U86964	191	652	252	861	U87069	357	1217	471	1606
	800	U86965	392	1338	517	1766	U87070	732	2496	966	3297
	1200	U86966	593	2023	783	2670	U87071	1106	3775	1460	4983
	1600	U86967	794	2709	1048	3576	U87072	1482	5055	1956	6673
	2000	U86968	994	3393	1312	4479	U87073	1856	6333	2450	8360
450 (18")	400	U86982	313	1068	413	1410	U87087	570	1946	752	2569
	500	U86983	396	1350	523	1782	U87088	721	2459	952	3246
	600	U86984	478	1631	631	2153	U87089	871	2972	1150	3923
	700	U86985	560	1910	739	2521	U87090	1020	3480	1346	4594
	800	U86986	642	2192	847	2893	U87091	1170	3993	1544	5271
	900	U86987	724	2470	956	3260	U87092	131	4501	1741	5941
	1000	U86988	807	2752	1065	3633	U87093	1470	5014	1940	6618
	1100	U86989	889	3034	1173	4005	U87094	1620	5527	2138	7296
	1200	U86990	971	3312	1282	4372	U87095	1769	6035	2335	7966
	1300	U86991	1053	3594	1390	4744	U87096	1919	6548	2533	8643
	1400	U86992	1135	3873	1498	5112	U87097	2068	7056	2730	9314
	1600	U86993	1300	4436	1716	5856	U87098	2369	8082	3127	10668
	1800	U86994	1464	4996	1932	6595	U87099	2668	9103	3522	12016
2000	U86995	1629	5557	2150	7335	U87100	2967	10124	3916	13364	
600 (24")	400	U86996	347	1184	458	1563	U87101	634	2164	837	2856
	500	U86997	439	1497	579	1976	U87102	801	2735	1057	3610
	600	U86998	530	1809	700	2388	U87103	969	3305	1279	4363
	700	U86999	621	2118	820	2796	U87104	1134	3870	1497	5108
	800	U87000	712	2430	940	3208	U87105	1301	4440	1717	5861
	900	U87001	803	2739	1060	3615	U87106	1467	5005	1936	6607
	1000	U87002	894	3051	1180	4027	U87107	1634	5575	2157	7359
	1100	U87003	986	3364	1302	4440	U87108	1801	6146	2377	8113
	1200	U87004	1076	3673	1420	4848	U87109	1967	6711	2596	8859
	1400	U87005	1258	4294	1661	5668	U87110	2300	7846	3036	10357
	1600	U87006	1441	4918	1902	642	U87111	2634	8987	3477	11863
	1800	U87007	1624	5540	2144	7313	U87112	2967	10122	3916	13361
	2000	U87008	1806	6161	2384	8133	U87113	3299	11257	4355	14859

All radiator outputs are calculated @DT50°C inline with the European BS EN 442 testing standard.

The design of the Myson Premier Compact has created a look that will reshape thinking in interior design. We're talking about a smooth, rounded styling, incorporating a top grille and side panels allowing the radiator to blend effortlessly into the room.

Even at the packaging stage, Myson apply the highest standards to ensure that Myson Premier Compact radiators reach you in perfect condition. Durable full-face cardboard covers, plastic corner pieces and a polythene outer wrap provide dependable protection.



## Myson Premier HE

### Range and Output Information

Height	Length mm	Single Convector Type					Double Convector Type 22				
		Cat No	Watts T50deg C	BTU/HR T50deg C	Watts T62 degC	BTU/HR T62 degC	Cat No	Watts T50deg C	BTU/HR T50deg C	Watts T62 degC	BTU/HR T62 degC
390 (12")	540 - 21	<b>298102</b>	340	1160	451	1539	<b>298162</b>	655	2234	869	2965
	641 - 25	<b>298103</b>	404	1379	536	1830	<b>298163</b>	778	2654	1032	3522
	743 - 29	<b>298104</b>	468	1597	621	2119	<b>298164</b>	901	3075	1196	4081
	946 - 37	<b>298106</b>	596	2034	791	2699	<b>298166</b>	1148	3916	1523	5197
	1047 - 41	<b>298107</b>	660	2252	876	2988	<b>298167</b>	1271	4336	1687	5754
	1149 - 45	<b>298108</b>	724	2471	961	3279	<b>298168</b>	1394	4757	1850	6313
	1251 - 49	<b>298109</b>	788	2689	1046	3568	<b>298169</b>	1517	5177	2013	6870
	1352 - 53	<b>298110</b>	852	2907	1131	3858	<b>298170</b>	1641	5598	2178	7429
	1454 - 57	<b>298111</b>	916	3126	1216	4148	<b>298171</b>	1764	6018	2341	7986
	1556 - 61	<b>298112</b>	980	3344	1300	4437	<b>298172</b>	1887	6439	2504	8545
	1759 - 69	<b>298113</b>	1108	3781	1470	5017	<b>298173</b>	2134	7280	2832	9661
1962 - 77	<b>U91011</b>	1236	4218	1640	5597	<b>298174</b>	2380	8121	3158	10777	
2165 - 85	-	-	-	-	-	<b>298175</b>	2670	8962	3543	11893	
530 (18")	438 - 17	<b>298121</b>	365	1244	484	1651	<b>298181</b>	688	2347	913	3114
	540 - 21	<b>298122</b>	449	1532	596	2033	<b>298182</b>	847	2891	1124	3836
	641 - 25	<b>298123</b>	534	1821	709	2416	<b>298183</b>	1007	3436	1336	4560
	743 - 29	<b>298124</b>	618	2109	820	2799	<b>298184</b>	1166	3980	1547	5281
	844 - 33	<b>298125</b>	703	2397	933	3181	<b>298185</b>	1326	4524	1760	6003
	946 - 37	<b>298126</b>	787	2686	1044	3564	<b>298186</b>	1485	5068	1971	6725
	1047 - 41	<b>298127</b>	872	2974	1157	3946	<b>298187</b>	1645	5613	2183	7448
	1149 - 45	<b>298128</b>	956	3263	1269	4330	<b>298188</b>	1804	6157	2394	8170
	1251 - 49	<b>298129</b>	1041	3551	1381	4712	<b>298189</b>	1964	6701	2606	8892
	1352 - 53	<b>298130</b>	1125	3840	1493	5096	<b>298190</b>	2124	7245	2819	9614
	1454 - 57	<b>298131</b>	1210	4128	1606	5478	<b>298191</b>	2283	7790	3030	10337
	1556 - 61	<b>298132</b>	1294	4416	1717	5860	<b>298192</b>	2443	8334	3242	11059
	1759 - 69	<b>298133</b>	1463	4993	1941	6626	<b>298193</b>	2762	9422	3665	12503
1962 - 77	<b>298134</b>	1633	5570	2167	7391	<b>298194</b>	3081	10511	4088	13948	
2165 - 85	<b>298135</b>	1802	6147	2391	8157	<b>298195</b>	3400	11599	4512	15392	
690 (27")	286 - 11	<b>298140</b>	301	1026	399	1362	<b>298200</b>	553	1886	734	2503
	438 - 17	<b>298141</b>	461	1573	612	2087	<b>298201</b>	847	2891	1124	3836
	540 - 21	<b>298142</b>	568	1937	754	2570	<b>298202</b>	1044	3562	1385	4727
	641 - 25	<b>298143</b>	675	2302	896	3055	<b>298203</b>	1240	4232	1645	5616
	743 - 29	<b>298144</b>	782	2667	1038	3539	<b>298204</b>	1437	403	1907	535
	844 - 33	<b>298145</b>	888	3031	1178	4022	<b>298205</b>	1633	5573	2167	7395
	946 - 37	<b>298146</b>	995	3396	1320	4506	<b>298206</b>	1830	6243	2428	8284
	1047 - 41	<b>298147</b>	1102	3761	1462	4991	<b>298207</b>	2026	614	2689	815
	1149 - 45	<b>298148</b>	1209	4126	1604	5475	<b>298208</b>	2223	7584	2950	10064
	1352 - 53	<b>298150</b>	1423	4855	1888	6443	<b>298210</b>	2616	8925	3471	11843
	1556 - 61	<b>298152</b>	1637	5584	2172	7410	<b>298212</b>	3009	10266	3993	13623
	1759 - 69	<b>U91039</b>	1850	6314	2455	8379	<b>298213</b>	3402	11607	4514	15402

All radiator outputs are calculated @DT50°C inline with the European BS EN 442 testing standard.

The Myson Premier HE round-top range, one of the UK's most popular radiator designs, provides a combination of high heat output with stylish design to complement any environment - traditional or modern. The famous round top is a safety conscious design, with no sharp edges to pose a potential danger particularly to young children or elderly people.

The high quality white gloss paint finish needs no further painting and suits all types of decor. Available in a wide range of sizes and heat outputs to meet all requirements, whichever you chose. For versatility, dependability, good looks and proven performance, the Myson Premier HE round top radiator is a wise and popular choice.



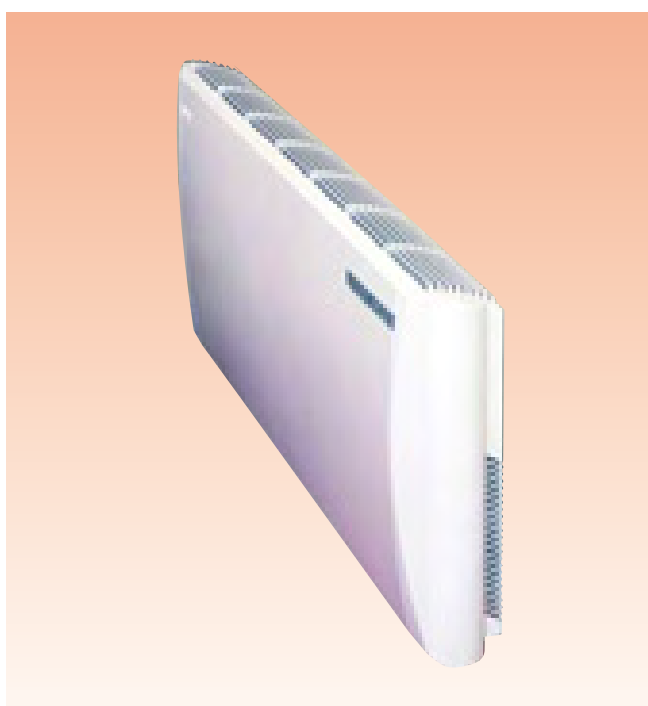
## Solo Convector & Myson Kickspace Heaters



### Wall Mounted Solo 0-3kw.

Max output of 3kw heat  
 Variable output can be achieved using same unit  
 Digital read out where room temperature can be set. Unit will keep room at this temperature, thus saving energy  
 No valves used to control unit, fan slows down as temperature in room is reached  
 High head pump must be used with systems using Solo units  
 Can be used in conjunction with a heat pump

Code: U84544



### Wall mounted Solo 0-6kw.

Max output of 6kw heat  
 Variable output can be achieved using same unit  
 Digital read out where room temperature can be set. Unit will keep room at this temperature, thus saving energy  
 No valves used to control unit, fan slows down as temperature in room is reached  
 High head pump must be used with systems using Solo units  
 Can be used in conjunction with a heat pump

Code: U84545

### Hideaway 0-3kw.

Max output of 3kw heat  
 Skirting/kickspace type unit  
 Variable output can be achieved using same unit  
 High head pump must be used with systems using Solo units  
 Can be used in conjunction with a heat pump

Code: U24143



### Air Curtain

Available in 2 sizes 4kw & 9kw max output  
 Used as Air Curtains over doors & walkways  
 Variable output can be achieved using same unit  
 High head pump must be used with systems using Solo units  
 Can be used in conjunction with a heat pump

U24152	Air Curtain 0-4kw
U24153	Air Curtain 0-9kw

### Myson Kickspace

U41520	500 c/w White Grille
U41521	600 c/w White Grille
U41522	800 c/w White Grille

## Towel Warmers



### Surety Towel Warmer Straight - White

Height x Width	Tapping Centres	Output	Code
760mm x 600mm	550	1416	U41797
1170mm x 600mm	550	2081	U41798
1700mm x 600mm	550	2945	U41799

### Surety Towel Warmer Straight - White

Height x Width	Tapping Centres	Output	Code
760mm x 500mm	450	1229	U83704
1170mm x 500mm	450	1781	U83707
1700mm x 500mm	450	2525	U83710



### Surety Towel Warmer Curved - Chrome

Height x Width	Tapping Centres	Output	Code
760mm x 600mm	550	949	U83706
1170mm x 600mm	550	1436	U83709
1700mm x 600mm	550	1914	U83712

### Surety Towel Warmer Straight - Chrome

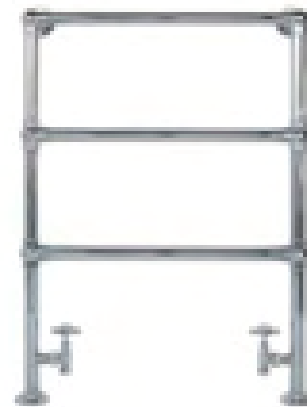
Height x Width	Tapping Centres	Output	Code
760mm x 500mm	450	750	U83705
1170mm x 500mm	450	1153	U83708
1700mm x 500mm	450	1730	U83711

## Towel Warmers



**Electric Led Towel Ladder - Chrome**

Height x Width	Tapping Centres	Output	Code
985mm x 600mm	–	Electric	U86050



**Delgado Towel Warmer - Chrome**

Height x Width	Tapping Centres	Output	Code
952mm x 686mm	435	864	U79387



**Electric LED S-Shaped Towel Warmer - Chrome**

Height x Width	Tapping Centres	Output	Code
600mm x 544mm	Electric		U86051



**Gustav Towel Warmer - Chrome**

Height x Width	Tapping Centres	Output	Code
958mm x 686mm	420	3520	U79386

# Radiator Valves

## Heat Merchants Radiator Valves

### Heat Merchants TRV

U87163	½ TRV Only
U88972	½ TRV + LS Pack



### Heat Merchants Manual Valves

U82867	Cosmos ½" WH/LS
U83806	Radiator Valve ½" WH/LS
U88973	Pre Taped ½" Rad Valve WH/LS



## Pegler Radiator Valves

### Pegler TRV

250932	Terrier CP TRV + LS Pack Angled
250934	Terrier CP TRV + LS Pack Straight
U79190	Terrier WH/CP TRV + LS Pack Angled
U84108	Terrier WH/CP TRV + LS D/OFF Pack Angled



### Pegler Manual Valves

U12383	Terrier LS Valve
U12382	Terrier WH Valve
U12361	Mercia Contract WH/LS
250928	Terrier CP WH + LS Pack Angled
250930	Terrier CP WH + LS Pack Straight



## Myson Radiator Valves

### Myson Fullflow

U86653	Myson 15mm / 1/2" fullflow WH angle valve CP
U86654	Myson 15mm / 1/2" fullflow LS angle valve CP



### Myson TRV

U86657	Myson ½" Contract TRV
U88530	Myson ½" Pushfit Contract TRV
U86728	Myson ½" TRV Body Only F/I
U86729	Myson ¾" TRV Body Only F/I
U86658	Myson Contract TRV Head Only



### Myson Matchmaster

U86649	Myson Matchmaster 15mm WH valve CP
U86650	Myson Matchmaster 15mm LS valve CP
U88651	½" Matchmaster W/H for GB
U86652	½" Matchmaster L/S for GB



### Myson Radiator Valves

U86644	Myson Matchmate 15mm WH valve NP
U86645	Myson Matchmate 15mm LS valve NP
U86646	Myson Matchmate LS valve c/w drain off
U86647	Myson Matchmate 15mm straight WH valve CP
U86648	Myson Matchmate 15mm straight LS valve CP
U88526	½" Matchmate Pushfit W/H
U88527	½" Matchmate Pushfit L/S
U86730	Matchmate W/H Cap
U86734	Matchmate L/S Cap



## Danfoss Radiator Valves

### Danfoss Thermostatic Radiator Valves

246110	Danfoss RAS-C2 15mm angle TRV
--------	-------------------------------



### Danfoss Radiator Valves

246005	Ras-D Sensor
246145	Ra-FN15 Angle Valve



# SECTION 4

## BOILERS AND GAS FIRES

### Contents:

Firebird Oil Boilers .....	56	Baxi Gas Boilers .....	60
Warmflow Oil Boilers .....	57	Ideal Gas Boilers.....	61
Worcester Bosch Oil Boilers.....	58	Vokera Gas Boilers.....	61
Riello Burners .....	58	Worcester Bosch Gas Boilers.....	62
IMIT Stats.....	58	Valor Gas Fires.....	63-64
Heat Merchants PRO Twinwall Flue.....	59	Focal Point Fires.....	65

# Oil Boilers

## Firebird Oil Boilers

FIREBIRD OUTPUT	OUTDOOR C/W RDB	INDOOR ONLY	HEATPAC	INDOOR COMBI	INDOOR SYSTEM	HEAT COMBI	HEATPAC SYSTEM	HEATPAC PUMPED
<b>HIGH EFFICIENCY BAND A</b>								
26KW	U42249	U84743	U86134	U84745	U82963	U86139	U86137	U41439
FLUE	U84747	U84747		U84747	U84747			
35KW	U42250	U84744	U86136	U84746	U86135	U86140	U86138	U41440
FLUE	U84747	U84747		U84747	U84747			
44KW	U41430	U41433	U41436		U41435		U41438	
FLUE								
58KW	U41432	U41434	U41437					
FLUE								
73KW	U42251	U42252	U42253					
FLUE	U42254	U42254	U42254					



FIREBIRD OUTPUT	OUTDOOR RIELLO	OUTDOOR RDB	INDOOR ONLY	INDOOR C/W TIMER	INDOOR C/W FLUE	INDOOR C/W TIMER AND FLUE	HEATPAC TURRET	HEATPAC SLIM	INDOOR COMBI	INDOOR SYSTEM	HEATPAC COMBI	HEATPAC SYSTEM	HEATPAC PUMPED
<b>STANDARD EFFICIENCY BAND C</b>													
26KW	U39816	U79683	U41543	U41542	U74303	U74269	U38008	U74004	U74453	U79658	U79660	U79662	U41424
FLUE	U79663	U79663	U79663	U79663						U79663			
35KW	U39817	U79684	U41544		U74449	U81958	U38010	U87848	U79656	U79659	U79661	U86605	U41425
FLUE	U79663	U79663	U79663							U79663			
44KW	U39818	U79685	U41545		U20126		U20124						
FLUE	U79664	U79664	U79664										
58KW	U39819	U79686	U41546		U25575		U84770						
FLUE	U79664	U79664	U79664		U79664								
73KW	U39820	U79687	U41547		U86362		U86364						
FLUE	U79665	U79665	U79665		U79665								
88KW	U39821	U79688	U41548		U86363		U86365						
FLUE	U79665	U79665	U79665		U79665								

## Warmflow Oil Boilers

WARMFLOW OUTPUT	OUTDOOR C/W RDB	U SERIES	U SERIES PUMPED	U SERIES SYSTEM	U SERIES COMBI	K SERIES	K SERIES COMBI	K SERIES PUMPED	K SERIES SYSTEM
<b>HIGH EFFICIENCY BAND A</b>									
<b>20KW</b>		U86579	U82303	U82305	U82307	U82315	U82322	U82318	U82320
<b>FLUE</b>		U82332	U82332	U82332	U82332				
<b>26KW</b>		U86580	U82304	U82306	U82308	U82316	U82323	U82319	U82321
<b>FLUE</b>		U82332	U82332	U82332	U82332				
<b>44KW</b>		U86581				U82317			
<b>FLUE</b>		U82332							

WARMFLOW OUTPUT	OUTDOOR C/W RDB	U SERIES	U SERIES PUMPED	U SERIES SYSTEM	U SERIES COMBI	K SERIES	K SERIES COMBI	K SERIES PUMPED	K SERIES SYSTEM
<b>STANDARD EFFICIENCY BAND C</b>									
<b>20KW</b>	U20992	U86579	U82303	U82305	U82307	U82324	U82330	U82326	U82328
<b>FLUE</b>	U26650	U26650	U26650	U26650	U26650				
<b>26KW</b>	U20993	U86580	U82304	U82306	U82308	U82325	U82331	U82327	U82329
<b>FLUE</b>	U26650	U26650	U26651	U26650	U26650				
<b>44KW</b>	U20994	U86581				U22182			
<b>FLUE</b>	U26650	U26650							



U Series



K Series



HE Condensing Boiler

# Oil Boilers

## Worcester Bosch



WORCESTER BOSCH OUTPUT	GREENSTAR UTILITY	GREENSTAR UTILITY SYSTEM	GREENSTAR EXTERNAL	GREENSTAR INDOOR <sup>III</sup>
<b>HE BAND A</b>				
<b>25KW</b>	100404	100407	100410	100401
<b>FLUE</b>	100760	100760		100760
<b>32KW</b>	100405	100408	100411	100402
<b>FLUE</b>	100760	100760		100760
<b>50KW</b>	100711			
<b>FLUE</b>	100770			
<b>70KW</b>	100712			
<b>FLUE</b>	100770			

## Boiler Accessories

### Riello Burners



U38031	G3B Burner
U38033	Gst Burner
U38032	G5 Burner
U12090	G10 Burner
U12092	G20 Burner

### IMIT Stats



U22975	Single Boiler Stat
U86525	Dual Boiler Stat
U86526	Pipe Stat
U86527	Room Stat
U86528	Dual Boiler Stat c/w long capillary
U41806	Cylinder stat

## Heat Merchants PRO Twinwall Flue

### Description of 5" Twin Wall Flue Pipe

U42326	HM Pro 130mm X 1000mm Twin Wall Flue
U42327	HM Pro 130mm X 500mm Twin Wall Flue
U42328	HM Pro 130mm X 250mm Twin Wall Flue
U42329	HM Pro 130mm Adj. 270-375mm Twin Wall Flue
U42330	HM Pro 130mm Twin Wall Draught Stabiliser
U42331	HM Pro 130mm Twin Wall Rain Cap
U42332	HM Pro 130mm Twin Wall 90 Degree Tee
U42333	HM Pro 130mm T/W Appliance Connector
U42334	HM Pro 130mm Twin Wall Bracket Adj.
U42335	HM Pro 130mm Twin Wall 90 Degree Bend
U42336	HM Pro 130mm Twin Wall 45 Degree Bend
U42337	HM Pro 130mm T/W Anti Downdraught Cowl
U42338	HM Pro 130mm T/W Tee Plug With Drain
U42339	HM Pro 130mm Baxi Pellet Boiler Adaptor

### Description of 6" Twin Wall Flue Pipe

U42340	HM Pro 150mm X 1000mm Twin Wall Flue
U42341	HM Pro 150mm X 500mm Twin Wall Flue
U42342	HM Pro 150mm X 250mm Twin Wall Flue
U42343	HM Pro 150mm Adj 270-375mm Twin Wall Flue
U42344	HM Pro 150mm Twin Wall Draught Stabiliser
U42345	HM Pro 150mm Twin Wall Rain Cap
U42346	HM Pro 150mm Twin Wall 90 Degree Tee
U42347	HM Pro 150mm T/W Appliance Connector
U42348	HM Pro 150mm Twin Wall Bracket Adj.
U42349	HM Pro 150mm Twin Wall 90 Degree Bend
U42350	HM Pro 150mm Twin Wall 45 Degree Bend
U42351	HM Pro 150mm T/W Anti Downdraught Cowl
U42352	HM Pro 150mm T/W Tee Plug With Drain



# Gas Boilers

## Baxi Gas Boilers

### High Efficiency Heat Only Boilers Sedbuk A

MODEL	NG	LPG	FLUE CODE	LPG KIT	KW	HEIGHT	WIDTH	DEPTH
SOLO 12	U41887	N/A	118310	N/A	12	600	390	320
SOLO 15	U41888	N/A	118310	N/A	15	600	390	320
SOLO 18	U41889	U41892	118310	N/A	18	600	390	320
SOLO 24	U41890	U41893	118310	N/A	24	600	390	320
SOLO 30	U41891	N/A	118310	N/A	30	600	390	320

### High Efficiency System Boilers Sedbuk A

MODEL	NG	LPG	FLUE CODE	LPG KIT	KW	HEIGHT	WIDTH	DEPTH
MEGAFLO 15	U41887	N/A	118270	N/A	15	780	450	345
MEGAFLO 18	U41888	N/A	118270	N/A	18	780	450	345
MEGAFLO 24	U41889	U41892	118270	N/A	24	780	450	345
MEGAFLO 28	U41890	U41893	118270	N/A	28	780	450	345
MEGAFLO 32	U41891	N/A	118270	N/A	32	780	450	345

### High Efficiency Combi Boilers Sedbuk A

MODEL	NG	LPG	FLUE CODE	LPG KIT	KW	HEIGHT	WIDTH	DEPTH
DUOTEC 24	118640	N/A	118270	N/A	24	780	450	345
DUOTEC 28	118641	N/A	118271	N/A	28	780	450	345
DUOTEC 32	118642	N/A	118272	N/A	32	780	450	345
DUOTEC 40	118643	N/A	118273	N/A	40	780	450	345

### Standard Efficiency Heat Only Boilers

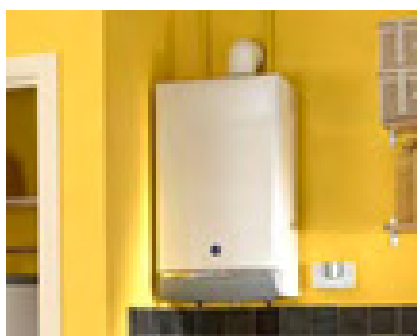
MODEL	NG	LPG	FLUE CODE	LPG KIT	KW	HEIGHT	WIDTH	DEPTH
SOLO 50	118002	N/A	118020	N/A	15	600	350	287
SOLO 60	118003	N/A	118020	N/A	18	600	462	287
SOLO 80	118005	N/A	118020	N/A	24	600	462	287

### Standard Efficiency Combi Boilers

MODEL	NG	LPG	FLUE CODE	LPG KIT	KW	HEIGHT	WIDTH	DEPTH
80E	118401	N/A	118420	118432	24	780	450	345
105E	118405	N/A	118420		30	780	450	345

### Standard Efficiency System Boilers

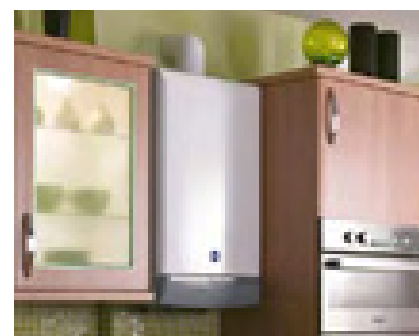
MODEL	NG	LPG	FLUE CODE	LPG KIT	KW	HEIGHT	WIDTH	DEPTH
35/80	U83902	U83903	118420	118432	24	780	450	345
60/100	U83904	U83905	118420	118434	30	780	450	345



Megaflo



Baxi Solo



Baxi Combi

## Ideal Gas Boilers

### High Efficiency System Boiler

MODEL	NG	LPG	FLUE CODE	LPG KIT	KW	SEDBUK	HEIGHT	WIDTH	DEPTH
ICOS 24	123056	N/A	123900	N/A	24	A	582	397	290
ICOS 15	123057	N/A	123900	N/A	15	A	582	397	290

### Standard Efficiency Heat Only Boilers

MODEL	NG	LPG	FLUE CODE	LPG KIT	KW	SEDBUK	HEIGHT	WIDTH	DEPTH
CLASSIC 50	123202	N/A	104130	N/A	15	D	700	380	300
CLASSIC 60	123203	N/A	104130	N/A	18	D	700	380	300
CLASSIC 80	123205	N/A	104130	N/A	24	D	700	380	300
CLASSIC 100	123206	N/A	104130	N/A	30	D	700	380	300

### Standard Efficiency System Boilers

MODEL	NG	LPG	FLUE CODE	LPG KIT	KW	SEDBUK	HEIGHT	WIDTH	DEPTH
MINI S24	123080	N/A	123700	N/A	24	D	703	400	310
MINI S28	123081	N/A	123700	N/A	28	D	703	400	310

### Standard Efficiency Combi Boilers

MODEL	NG	LPG	FLUE CODE	LPG KIT	KW	SEDBUK	HEIGHT	WIDTH	DEPTH
MINI C 24	123070	N/A	123700	N/A	24	D	703	400	310
MINI C 28	123071	N/A	123700	N/A	28	D	703	400	310



Ideal Mini S24



Ideal Classic



Ideal Icos

## Vokera Gas Boilers



Vokera HE

### High Efficiency

MYNUTE	12HE	U96964	25HE	U96967
MYNUTE	15HE	U96965	30HE	U96968
MYNUTE	20HE	U96966	35HE	U96969

### Standard Efficiency

MYNUTE	24M	U87780
MYNUTE	24M	U87781

# Gas Boilers

## Worcester Bosch Gas Boilers

### High Efficiency Heat Only Boilers Sedbuk A

MODEL	NG	LPG	FLUE CODE	LPG KIT	KW	SEDBUK	HEIGHT	WIDTH	DEPTH
GREENSTAR 12RI	100240	100235	100850	100245	12	A	600	390	270
GREENSTAR 15RI	100242	100236	100850	100246	15	A	600	390	270
GREENSTAR 18RI	100243	100237	100850	N/A	18	A	600	390	270
GREENSTAR 24RI	100241	100237	100850	100330	24	A	600	390	270
GREENSTAR 30CDI	100321	100322	100850		30	A	760	440	360
GREENSTAR 40CDI	100323	100324	100850		40	A	760	440	360

### High Efficiency System Boilers Sedbuk A

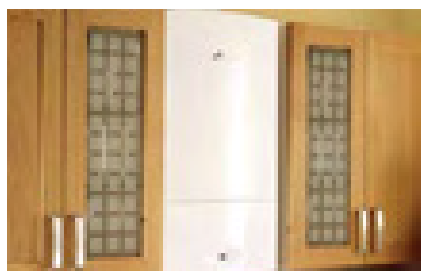
MODEL	NG	LPG	FLUE CODE	LPG KIT	KW	SEDBUK	HEIGHT	WIDTH	DEPTH
GREENSTAR 12I	100290	100295	100850	N/A	12	A	710	400	330
GREENSTAR 24I	100291	100296	100850	N/A	24	A	710	400	330
GREENSTAR 30CDI	100325	100326	100850		30	A	760	400	360

### High Efficiency Combi Boilers Sedbuk A

MODEL	NG	LPG	FLUE CODE	LPG KIT	KW	SEDBUK	HEIGHT	WIDTH	DEPTH
GREENSTAR JUNIOR 24I	100280	100285	100850	N/A	24	A	710	400	330
GREENSTAR JUNIOR 28I	100281	100286	100850	N/A	28	A	710	400	330
GREENSTAR 30CDI HE	100352	N/A	100850	N/A	30	A	760	440	360
GREENSTAR 37CDI HE	100354	N/A	100850	N/A	37	A	760	440	360
GREENSTAR 42CDI HE	100356	N/A	100850	N/A	42	A	760	440	360

### Standard Efficiency Combi Boilers

MODEL	NG	LPG	FLUE CODE	LPG KIT	KW	SEDBUK	HEIGHT	WIDTH	DEPTH
JUNIOR 24I	105730	105731	105900	N/A	24	D	600	400	325
JUNIOR 28I	105740	N/A	105900	105741	28	D	600	400	325



Greenstar SI



Greenstar i System



Greenstar RI condensing

Valor Gas Fires



**Blenheim Hotbox**

135355	Brass
--------	-------

**Features**

- Compatible with standard chimney
- Compatible with prefabricated flue
- Available in natural gas and LPG
- Min heat input (kW) = 2.3 with natural gas and 4.0 with LPG
- Max heat input (kW) = 6.85 with natural gas and 6.7 with LPG
- Min heat output (kW) = 0.9 with natural gas and 2.1 with LPG
- Max heat output (kW) = 3.4 with natural gas and 3.7 with LPG
- Controls situated beneath ash pan
- Coal effect fuel bed



**Blenheim Slimline**

135360	Brass
135780	Chrome
135781	Black

**Features**

- Compatible with standard chimney
- Compatible with prefabricated and precast flues
- Available in natural gas and LPG
- Min heat input (kW) = 2.3 with natural gas and 3.8 with LPG
- Max heat input (kW) = 6.0 with natural gas and 6.1 with LPG
- Min heat output (kW) = 1.1 with natural gas and 2.0 with LPG
- Max heat output (kW) = 3.0 with natural gas and 3.2 with LPG
- Controls situated beneath ash pan
- Coal effect fuel bed



**Dream Convector**

135340	Gold
135341	Chrome
135342	Black

**Features**

- Compatible with standard chimney
- Compatible with prefabricated flue
- Available in natural gas and LPG
- Min heat input (kW) = 2.7 with natural gas and 4.3 with LPG
- Max heat input (kW) = 6.85 with natural gas and 6.7 with LPG
- Min heat output (kW) = 1.3 with natural gas and 2.2 with LPG
- Max heat output (kW) = 4.0 with natural gas and 3.9 with LPG
- Black option available
- Fireside controls
- Coal effect fuel bed



**Dream Convector Slimline**

135345	Gold
135346	Chrome
135347	Black

**Features**

- Compatible with standard chimney
- Compatible with prefabricated and precast flues
- Available in natural gas and LPG
- Min heat input (kW) = 2.3 with natural gas and 3.8 with LPG
- Max heat input (kW) = 6.0 with natural gas and 6.1 with LPG
- Min heat output (kW) = 1.15 with natural gas and 1.9 with LPG
- Max heat output (kW) = 3.4 with natural gas and 3.5 with LPG
- Black option available
- Fireside controls
- Coal effect fuel bed



**Dream Powerflue**

135350	Gold
135351	Chrome
135352	Black

**Features**

- Compatible with no chimney
- Available in natural gas and LPG
- Min heat input (kW) = 2.2 with natural gas and 3.6 with LPG
- Max heat input (kW) = 6.0 with natural gas and 6.1 with LPG
- Min heat output (kW) = 1.1 with natural gas and 1.8 with LPG
- Max heat output (kW) = 3.1 with natural gas and 3.6 with LPG
- Black option available
- Fireside controls
- Coal effect fuel bed

# Gas Fires

## Valor Gas Fires



### Dream Hotbox

### Features

135300	Gold
135301	Chrome
135302	Black

- Compatible with standard chimney
- Compatible with prefabricated and precast flues
- Available in natural gas and LPG
- Min heat input (kW) = 2.2 with natural gas and 4.3 with LPG
- Max heat input (kW) = 6.9 with natural gas and 6.7 with LPG
- Min heat output (kW) = 1.1 with natural gas and 1.9 with LPG
- Max heat output (kW) = 3.4 with natural gas and 3.0 with LPG
- Black option available
- Fireside controls
- Coal effect fuel bed



### Icon Coal

### Features

135321	Champagne with coals
--------	----------------------

- Compatible with standard chimney
- Compatible with prefabricated and precast flues
- Available in natural gas and LPG
- Min heat input (kW) = 2.7 with natural gas and 4.3 with LPG
- Max heat input (kW) = 6.85 with natural gas and 6.7 with LPG
- Min heat output (kW) = 1.3 with natural gas and 2.2 with LPG
- Max heat output (kW) = 4.0 with natural gas and 3.9 with LPG
- Fireside controls
- Fuel effect type



### Icon Pebble

### Features

135322	Silver with pebbles
--------	---------------------

- Compatible with standard chimney
- Compatible with prefabricated and precast flues
- Available in natural gas and LPG
- Min heat input (kW) = 2.7 with natural gas and 4.3 with LPG
- Max heat input (kW) = 6.85 with natural gas and 6.7 with LPG
- Min heat output (kW) = 1.3 with natural gas and 2.2 with LPG
- Max heat output (kW) = 4.0 with natural gas and 3.9 with LPG
- Fireside controls
- Fuel effect type



### Majestic DGF Inset Coal

### Features

135240	Coals
--------	-------

- Compatible with standard chimney
- Compatible with prefabricated flue
- Available in natural gas only
- Min heat input (kW) = 2.3
- Max heat input (kW) = 5
- Min heat output (kW) = 1.7
- Max heat output (kW) = 4
- Top fireslide controls
- Coal effect fuel bed.
- 89% Nett Efficient



### Majestic DGF Inset Pebbles

### Features

135241	
--------	--

- Compatible with standard chimney
- Compatible with prefabricated flue
- Available in natural gas only
- Min heat input (kW) = 2.3
- Max heat input (kW) = 5
- Min heat output (kW) = 1.7
- Max heat output (kW) = 4
- Top fireslide controls
- Coal effect fuel bed.
- 89% Nett Efficient

## Focal Point Fires



### Excelsior Radiant Flueless Inset

### Features

U79198 Manual silver  
 U79460 Manual brass  
 U80246 Remote silver

- No chimney required
- Compatible with prefabricated and precast flues
- Catalytic flueless
- Available in natural gas
- Requires ventilation
- Ultrasonic remote control option
- Energy input (kW) = 2.6
- Max heat output (kW) = 2.3
- Min heat output (kW) = 1.9
- % Efficiency (net) = 100



### Excelsior Radiant Powaflue Fire

### Features

U75216 Powaflue fire Coals  
 U75217 Powaflue fire pebbles

- No chimney required
- Available in natural gas
- Requires an electrical supply
- Energy input (kW) = 6.8
- Max heat output (kW) = 3.75
- Min heat output (kW) = 1.9
- % Efficiency (net) = 55



### Excelsior Radiant Gas Fire

### Features

U39828 c/w pebbles  
 U39829 c/w coal

- Compatible with standard chimney
- Compatible with prefabricated and precast flues
- Available in natural gas
- Ultrasonic remote control option
- Energy input (kW) = 6.8
- Max heat output (kW) = 3.75
- Min heat output (kW) = 1.9
- % Efficiency (net) = 55



### Excelsior Slimline Gas Fire

### Features

U74035 Manual c/w pebbles  
 U74037 Manual c/w coals  
 U74038 Remote c/w pebbles  
 U74039 Remote c/w coals  
 U74796 LPG c/w coals

- Compatible with standard chimney
- Compatible with prefabricated and precast flues
- Available in natural gas and LPG
- Ultrasonic remote control option
- Energy input (kW) = 6.2
- Max heat output (kW) = 3.1
- Min heat output (kW) = 1.75
- % Efficiency (net) = 50



# SECTION 5

## CYLINDERS, VALVES, PUMPS

### Contents:

Copper Cylinders.....	67	Pressure Reducing Valves.....	68
Cylinder Jackets.....	67	Mixing Valves.....	68
Immersion.....	68	Circulating Pumps.....	69
Stainless Steel Cylinders.....	68	Booster Pumps.....	69
Pressure & Temperature Relief Valves.....	68	Saniflo Macerators.....	69

## Copper Cylinders

### Indirect Cylinders

PLAIN			INSULATED		
LYCRIS BYRNE	COPPERCRAFT	SIZE	CAPACITY (LITRES)	LYCRIS BYRNE	COPPERCRAFT
U11921	U13023	30 X 18	98	U11922	U13026
U11923	U13027	36 X 15	94	U11924	U13028
U11925	U20004	36 X 18	120	U11926	U20005
U11927	U20008	42 X 15	117	U11928	U80658
U11929	U13030	42 X 18	144	U11930	U13031
U75638	-	48 X 15	140	U74278	-
U11931	-	48 X 18	166	U11932	U13029
U11936	-	54 X 18	196	U11934	-
U11935	U20007	60 X 18	210	U11933	U23671

### Dual Coil Cylinders

PLAIN			INSULATED		
LYCRIS BYRNE	COPPERCRAFT	SIZE	CAPACITY (LITRES)	LYCRIS BYRNE	COPPERCRAFT
U11945	U13010	30 X 18	98	U11946	U13011
U11947	U13013	36 X 15	94	U11948	U13014
U11949	U13009	36 X 18	120	U11950	U80635
U11951	U80659	42 X 15	117	U11952	U80660
U11953	U13015	42 X 18	144	U11954	U13016
U83739	-	48 X 15	140	U83741	-
U11955	U80641	48 X 18	166	U11956	U80642
U11957	-	54 X 18	196	U11958	-
U11959	U80648	60 X 18	210	U11960	U80649

### Rapid Recovery/Indirect Cylinders

INSULATED		
SIZE	LYCRIS BYRNE	CAPACITY (LITRES)
98	U83745	30 X 18
94	-	36 X 15
120	U83746	36 X 18
117	U83747	42 X 15
144	U83754	42 X 18
140	U83748	48 X 15
166	U83749	48 X 18
196	U83749	54 X 18
210	U83751	60 X 18

### Pre Plumbed Cylinders

LYCRIS BYRNE		
SIZE	CYLINDER ONLY	C/W M330 PUMP
50/30 ESB	U84625	U84629
50/30 Indirect	U84622	U84628
60/35 ESB	U84626	U84631
60/35 Indirect	U84623	U84630
70/40 ESB	U84627	U84633
70/40 Indirect	U84624	U84632

COPPERCRAFT		
SIZE	IND	ESB
227/120	U42296	U42304
227/144	U42297	U42305
317/120	U42298	U42306
317/144	U42299	U42307
317/180	U42303	U42308

### GOLD SHIELD ESB CYLINDERS

LYCRIS BYRNE	COPPERCRAFT	SIZE
U11916	U80636	36x18
U11917	U80639	42x18
U11918	U80645	48x18

### Cylinder Jackets

177072	30 x 18
177077	36 x 18
177080	42 x 18



# Immersion

## Immersion

U47240	11"
U47237	24"
U47238	27"
U47239	36"
U47241	Willis type Immersion
U47242	14" for Unvented Cylinders



## Stainless Steel Cylinders

Item No.	Description
U80098	150l Single Coil
U80099	200l Single Coil
U80101	300l Single Coil
U80102	500l Single Coil
U80103	300l Dual Coil
U80104	500l Dual Coil
U82896	200l Dual Coil
U87847	Top Hat Cover for Cylinder



## Pressure & Temperature Relief Valves

### Pressure and Temperature Relief Valves

U80385	1/2"
U25440	3/4"
U25441	1"

Features: ■ \*Valve settings 95°



### Accessories

U25447	Core Unit
U25442	Tundish

Features: ■ \*Valve settings 95°

## Pressure Reducing Valves

### Pressure Reducing Valves

U25443	1/2"
U64923	1/2" Caleffi c/w gauge
U25444	3/4"
U25445	1"



### Mixing Valves

U87291	Reliance 22mm mixing valve
U87292	Reliance 28mm mixing valve

## Grundfos Pumps

### Grundfos Hot Water

144018	Uo 20/30N 3PH Bronze Pump
144413	Up 20/15N 1PH HWS 3/4"
U88714	Bronze Pumps Unions



### Grundfos Circulators

114217	25/50	1"
144414	25/60	1"
144441	25/80	1"
144436	32/80	1 1/4"
U22994	Alpha 25/60	1"
U88715	Unions	1 1/4"



### Wilo Pumps

U33600	Star - RS 25/4 130mm
U33601	Star - RS 25/6 130mm

## Heat Merchants Circulation Pumps

U81194	Heat Merchants 5 Metre Circulating Pump
U41491	Heat Merchants 6 Metre Circulating Pump



## Booster Pumps

### Wilco Cold Water Booster Pumps

U25580	MP303
U25581	MP603
U25582	Fluid Control

### Grundfos Cold Water Booster Pumps

U23224	Grundfos MQ3-35 Booster Pump
U23225	Grundfos MQ3-45 Booster Pump

## Shower Booster Pumps

### Monsoon Twin Pump PVC body

U11001	ST55 1.4 bar twin pump PVC body
U22872	1.8 bar Showermate



### Monsoon Negative Head Brass Body Shower Pump

U79084	M330 1.5 bar
U80771	M550N 3 bar
U40998	2.0 bar



### Monsoon Negative Head Brass Body Shower Pump

U11330	3 bar
U11331	4 bar
U84291	1.5 bar MFL250



## Saniflo Macerators

U41336	Saniflo WC
U41337	Sanitop WC, Basin
U41338	Sanipro WC, Basin, Shower
U41339	Saniplus WC, Basin, Shower, Bath
U41340	Sanipack WC, Basin, Shower
U41341	Sanislim WC, Basin, Shower
U41342	Sanibest WC, Basin, Shower, Bath
U41343	Sanishower Shower, Basin
U41344	Sanivite Basin, W/Machine, Dish Washer, Sink





# SECTION 6

## TANKS & VESSELS

### Contents:

Harlequin Oil Tanks.....	71	PVC Water Storage Tanks.....	73
Titan Oil Tanks.....	72	Expansion Vessels.....	74
Titan Potable & Eco Safe Oil Tanks.....	72	Auto Filling Valves and Filling Loops.....	74
Oil Tank Gauges and Accessories.....	72		

# Oil Tanks

## Harlequin

HM Code	Description	Product Code	Nominal Capacity (L)	Weight (kg)	Maximum Dimension			Base Requirements*	
					Length	Width	Height	Length	Width
U87886	920 SLIMLINE TANK	920SL	885	55	1530	715	1165	2130	1315
419240	1100 SLIMLINE TANK	1100SL	1040	60	1650	690	1420	2250	1290
419310	1200 LOW PROFILE TANK	1200LP	1251	50	1740	1320	825	2340	1920
U87890	1300 SLIMLINE TANK	1300SL	1335	85	1915	745	1370	2515	1345
419211	1400 HORIZONTAL TANK	1400HZ	1380	55	1805	1095	1135	2405	1695
419212	2000 HORIZONTAL TANK	2100HZ	1994	68	2140	1240	1270	2740	1840
419214	2500 HORIZONTAL TANK	2500HZ	2497	75	2180	1385	1410	2780	1985
419205	1450 VERTICAL TANK	1450VT	1406	40	1350		1260	1950	1950
419206	2500 VERTICAL TANK	2500VT	2450	65	1700		1345	2300	2300
419250	3900 VERTICAL TANK	3900VT	3733	100	2020		1420	2620	262
419255	5400 VERTICAL TANK	5400VT	5042	150	2020		1920	2620	2620
U87892	10000 VERTICAL TANK	10000VT	9595	250	2260		3200	2860	2860
U84158	350 BUNDED TANK	350 ENV/BND	333	45	980		1155	1580	1580
419320	1000 BUNDED TANK	1000 ENV/BND	1003	130	2150	710	1420	2750	1310
419243	1100 BUNDED TANK	1100 ENV/BND	1040	124	1880	920	1605	2480	1520
U87888	1300 BUNDED TANK	1300 ENV/BND	1335	160	2150	950	1540	2750	1550
419238	1400 BUNDED TANK	1400 ENV/BND	1380	130	1900	1250	1420	2500	1850
419241	1450 BUNDED TANK	1450 ENV/BND	1413	105	1540		1590	2140	2140
419330	2000 BUNDED TANK	2000 ENV/BND	2005	180	2360	1320	1415	2960	1920
419248	2700 BUNDED TANK	2700 ENV/BND	2656	190	2395	1720	1650	2995	2320
419259	5400 BUNDED TANK	5400 ENV/BND	5042	325	2575		2125	3175	3175
U87894	10000 BUNDED TANK	10000 ENV/BND	9595	725	3250	2800	3350	3850	3400
419340	1400 Fuel Station 240V	1400 FS	1413	147	1570		1850	2170	2170
		2500 FS	2580	200	2090		1800	2690	2690
		5000 FS	5042	380	2950	2520	2500	3550	3120
		5400 FS	5042	390	2985	2575	2125	3585	3175
U87896	10000 Fuel Station 240V	10000 FS	9595	725	3250	2800	3350	3850	3400
		350 ORB	333	48	980		1300	1580	1580
		1400 ORB	1380	135	1900	1250	1420	2500	1850
		2700 ORB	2656	200	2395	1720	1810	2995	2320

	Width	Depth	Height	Capacity*
CB 1	770	595	670	150 kg
CB 2	880	750	980	300 kg
CB 3	1080	840	1055	500 kg

\* OFTEC and BS 5410 require a base that is 300mm greater than the maximum dimensions of the tank on all sides and is constructed of flat, fireproof material (eg 100mm thick concrete).

\*\* All bunker capacities are approximate and assume storage of group 2 household coal. Actual capacity will vary with type/density of coal and level of fill.

All dimensions in mm  
Dimensions in inches = dimension in mm divided by 25.4

