

Commercial Controls Guide

HEAT
MERCHANTS



Dear Customer,

Welcome to the first edition of the Heat Merchants Commercial Controls Guide. Heat Merchants has been at the forefront of spare parts supplies since the early 90's. Our knowledge and experience throughout the years has lead to our stock profile of spare parts being built around your needs. You can have peace of mind that all our spare parts are genuine products direct from the boiler manufacturers. With an excellent track record of protecting the trade you will find that our product range, price and customer service has been rivaled but never beaten. Just take a look at some of the reasons why Heat Merchants have been so successful throughout the years:

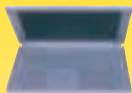
- Branches nationwide
- All branches hold the top selling spare parts for today's market.
- Each branch can change their spare parts stock profile to suit your needs.
- Daily delivery to all branches.
- Access to over 60,000 parts between our Irish and UK distribution networks
- Direct access to all major parts suppliers across Ireland, UK & Europe.
- In-branch experts trained and certified on gas spares.
- Our online and in branch parts identification system (Parts Arena) available for all customers. Every boiler type and model listed with exploded diagrams for easy look-ups.
- On-line access for all account holders to Parts Arena.
- New commercial boiler range also available from 40kw to 200kw.

We hope you find our guide beneficial, if you have any questions please don't hesitate to contact us, our details are on the back of this brochure, or pop in to see us. We look forward to seeing you soon.

Kind regards,

The Heat Merchants Team

Ordering is easy, just follow these simple 3 steps!



Step 1

Choose your parts from this catalogue or check our commercial controls catalogue online at www.gasandoilpartsdirect.ie



Step 2

Call our dedicated order line 0818 212220.

We can deliver direct to your door or to your local branch

Remember if the part is highlighted in red it's already on the shelf in the following locations:

Heat Merchants Donabate - 01 8950000

Heat Merchants Finglas - 01 8110081

Heat Merchants Rialto - 01 4541900

Heat Merchants Turners Cross, Cork - 021 4968134

Step 3

That's it!



Dear Customer,

Welcome to the first edition of the Heat Merchants Commercial Controls Guide. Heat Merchants has been at the forefront of spares parts supplies since the early 90's. Our knowledge and experience throughout the years has lead to our stock profile of spare parts being built around your needs. You can have peace of mind that all our spare parts are genuine products direct from the boiler manufacturers. With an excellent track record of protecting the trade you will find that our product range, price and customer service has been rivaled but never beaten. Just take a look at some of the reasons why Heat Merchants have been so successful throughout the years:

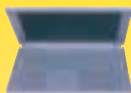
- Branches nationwide
- All branches hold the top selling spare parts for today's market.
- Each branch can change their spare parts stock profile to suit your needs.
- Daily delivery to all branches.
- Access to over 60,000 parts between our Irish and UK distribution networks
- Direct access to all major parts suppliers across Ireland, UK & Europe.
- In-branch experts trained and certified on gas spares.
- Our online and in branch parts identification system (Parts Arena) available for all customers. Every boiler type and model listed with exploded diagrams for easy look-ups.
- On-line access for all account holders to Parts Arena.
- New commercial boiler range also available from 40kw to 200kw.

We hope you find our guide beneficial, if you have any questions please don't hesitate to contact us, our details are on the back of this brochure, or pop in to see us. We look forward to seeing you soon.

Kind regards,

The Heat Merchants Team

Ordering is easy, just follow these simple 3 steps!



Step 1

Choose your parts from this catalogue or check our commercial controls catalogue online at **www.gasandoilpartsdirect.ie**



Step 2

Call our dedicated order line **0818 212220**.
We can deliver direct to your door or to your local branch

Remember if the part is highlighted in red it's already on the shelf in the following locations:

Heat Merchants Donabate - 01 8950000

Heat Merchants Finglas - 01 8110081

Heat Merchants Rialto - 01 4541900

Heat Merchants Turners Cross, Cork - 021 4968134

Step 3

That's it!



Table of contents	Page No.
General Purpose Solenoid Valves	3
Gas Safety Shut Off Valves	4 - 5
Valves and Actuators	6- 8
Danfoss Commercial Products	9 -12
3 Port Rotary Valves	13
Flow Switches & Thermostats	14 -15
Pressure Switches	16
Controls and Sensors	17 -18
Replacement Pump Heads	19 - 21
Damper Motors	22
Free Fall Fire Valves	23
Oil and Water Meters	24
Energy Meters	25
Time Switches	26
Magnahelic Gauge	27
Own Brand Gauges	28
Boiler and Gas Analyzers	29 - 30

General Purpose Solenoid Valves



General Purpose Solenoid Valve

General Solenoid Valve – Nitrile Seal

For use with non-combustion gases, air, oil, water and other non to mildly aggressive media

Cat No	Size	Voltage	Operating Pressure
301430	3/8"	240v	0-15 Bar
301431	1/2"	240v	0-15 Bar
301432	3/4"	240v	0-15 Bar
301433	1"	240v	0-15 Bar
301434	1.25"	240v	0-5 Bar
301435	1.5"	240v	0-5 Bar
301436	2"	240v	0-5 Bar
301440	3/8"	110v	0-15 Bar
301441	1/2"	110v	0-15 Bar
301442	3/4"	110v	0-15 Bar
301443	1"	110v	0-15 Bar
301444	1.25"	110v	0-5 Bar
301445	1.5"	110v	0-5 Bar
301446	2"	110v	0-5 Bar



General Purpose Solenoid Valve

Water Solenoid Valve – EPDM Seal

WRAS approved for use with coldwater and other non to mildly aggressive media

Cat No	Size	Voltage	Operating Pressure
301450	3/8"	240v	0-15 Bar
301451	1/2"	240v	0-15 Bar
301452	3/4"	240v	0-15 Bar
301453	1"	240v	0-15 Bar
301454	1.25"	240v	0-5 Bar
301455	1.5"	240v	0-5 Bar
301456	2"	240v	0-5 Bar
301460	A230V COIL KIT	240v	0-15 Bar
301461	A110V COIL KIT	110v	0-15 Bar
301462	A24V COIL KIT	24v AC	0-15 Bar

HEAT MERCHANTS

The Heat Merchants Promise

Our commitment is providing you, our customer, with the widest range of top quality products at the right price, coupled with an after sales programme that is second to none.

With a network of just over 40 branches in the Republic of Ireland and over 60,000 computerised parts and 5000 ex-stock lines, ordering through Heat Merchants could not be easier. Each branch is linked via a central computer system, providing access to stock availability nationwide, in addition we hold stock in our state of the art feeder warehouse for central distribution.

Our experience, knowledgeable team of staff are always on hand to provide you with expert assistance and help you identify the spare part you need.

Our branch staff will be happy to assist with your queries, as will our friendly Call Centre staff. To locate your nearest branch, simply turn to the branch list at the back of this catalogue.

*** Products highlighted in red are stocked centrally for fast delivery**



VE 1" Gas Valve

Solenoid Operated

Own Brand Screwed

Cat No	Size	Voltage
365430	1/2"	240v
365432	3/4"	240v
365433	1"	240v
365434	1.25"	240v
365435	1.5"	240v
365436	2"	240v
365437	2.5"	240v
365438	3"	240v



2000 Gas Valves

Solenoid Operated

Black Screwed

Cat No	Size	Voltage
301740	3/4"	240v
301743	1"	240v
301746	1.25"	240v
301749	1.5"	240v
301752	2"	240v

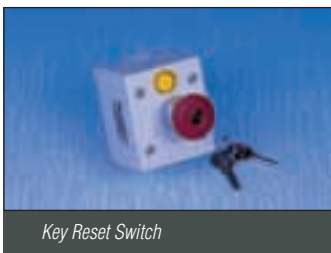


VE 4" Gas Valve

Solenoid Operated

Flanged

Cat No	Size	Voltage
311328	65mm	240v
311338	80mm	240v
311339	100mm	240v



Key Reset Switch

Accessories

Cat No	Description
301555	EMERGENCY KNOCK OFF BUTTON
301561	EMERGENCY KNOCK OFF BUTTON KEY RESET
301556	ELECTRO - THERMAL LINK

HEAT
MERCHANTS

* Products highlighted in red are stocked centrally for fast delivery

Gas Safety Shut-Off Valves



668 Powerseat Gas Valve

Blacks Electro Hydraulic Valves – Screwed

Screwed

Cat No	Size	Voltage	Part No
301520	1.5"	240v	BC6683
301522	2"	240v	BC6684
301525	2.5"	240v	BC6685
301526	3"	240v	BC6686
301521	1.5"	110v	BC6683
301523	2"	110v	BC6684
301527	2.5"	110v	BC6685
301528	3"	110v	BC6686



668 Powerseat Gas Valve

Blacks Electro-Hydraulic Valves – Flanged

Flanged

Cat No	Size	Voltage	Part No
301510	65mm	240v	BC6685
301511	80mm	240v	BC6686
301512	100mm	240v	BC6687
301540	150mm	240v	BC6689
301544	200mm	240v	BC66810
301547	250mm	240v	BC66811
301516	65mm	110v	BC6685
301517	80mm	110v	BC6686
301518	100mm	110v	BC6687
301542	150mm	110v	BC6689
301546	200mm	110v	BC66810
301548	250mm	110v	BC66811

Superseal & Powerseat Spare Actuators

Cat No	Fitted To	Voltage	Part No
301345	Actuator for 6683, 6684, 6663 & 6664 Models	240V 1ph	BC 668/S
301346	Actuator for 6685, 6686, 6665 & 6666 Models	240V 1ph	BC 668/LS
301348	Actuator for 6685-FL4, 6686-FL4 Flanged Models	240V 1ph	BC 668/HS
301349	Actuator for 6687-FL4 Flanged Model	240V 1ph	BC 6687/S
301350	Actuator for 6689-FL4 Flanged Model	240V 1ph	BC 6689/S
301333	Actuator for 6685-FL4, 6686-FL4 Flanged Models	110V 1ph	BC 668/HS
301334	Actuator for 6687-FL4 Flanged Model	110V 1ph	BC 6687/S
301335	Actuator for 6689-FL4 Flanged Model	110V 1ph	BC 6689/S

Coming soon!

Coming soon and new to Heat Merchants is

www.gasandoilpartsdirect.ie

our website dedicated to our range of gas and oil parts.

Log on regularly to keep up to date on special offers and new products.

You can also view our brochure online and contact us via email for a quote on any products you need.

www.gasandoilpartsdirect.ie





VBG Screwed Valve

Rotary Shoe – Screwed

3 PORT SCREWED					ACTUATORS TO SUIT		
Cat No	Size	Part No	Cat No	Linkage	Cat No	Part No	Voltage
303163	3/4"	VBI 31-20		N/R	305614	SQK34	240v
303164	1"	VBI 31-25		N/R	305616	SQK84	24v
303165	1.25"	VBI 31-32		N/R			
303166	1.5"	VBI 31-40		N/R			
303223	3/4"	VBG31-20	303447	ASK32	303462	SQK33	240v
303224	1"	VBG31-25	303447	ASK32	303157	SQL33	240v
303474	1.25"	VBG31.32	303447	ASK32	303618	SQL83	24v
303475	1.5"	VBG31-40	303447	ASK32			



SQL Actuator

HEAT
MERCHANTS



SQL Actuator

Rotary Shoe – Flanged

3 PORT FLANGED					ACTUATORS TO SUIT		
Cat No	Size	Part No	Cat No	Linkage	Cat No	Part No	Voltage
303225	1.5"	VBF21-40		N/R	305614	SQK34	240v
303226	2"	VBF21-50		N/R	305616	SQK84	24v
303225	1.5"	VBF21-40	303447	ASK32	303462	SQK33	240v
303226	2"	VBF21-50	303447	ASK32	303157	SQL33	240v
303227	2.5"	VBF21-65	303446	ASK31	303618	SQL83	24v
303228	3"	VBF21-80	303446	ASK31	303157	SQL33	240v
303229	4"	VBF21-100	303446	ASK31	303155	SQL33.03	240v
303230	5"	VBF21-125	303446	ASK31	303618	SQL83	24v
303231	6"	VBF21-150	303446	ASK31			

Did you know?

You can use your Heat Merchants account in any of our Wolseley Ireland branches throughout Ireland.

You can use your account at branches of our sister companies, Brooks or Tubs and Tiles.

Choose from Brooks quality Timber and Building Materials, or Tubs and Tiles, Ireland's leading Bathroom and Tiles Specialists.

Siemens Valves & Actuators



VP 47 Valves



SSP Actuator



VXG 3 Port Valve



VVG 2 Port Valves



SQX Actuator

Siemens 3 Port Valves

3 PORT SCREWED					ACTUATORS TO SUIT		
Cat No	Size	Part No	Cat No	Linkage	Cat No	Part No	Voltage
303795	3/4"	VXP45-20		N/R	303479	SSC31	240v
303796	1"	VXP45-25/6.3		N/R	303484	SSC81	24v
303797	1"	VXP45-25/10		N/R	303483	SSC61	0-10v
303798	1.25"	VXP45-32		N/R			
303799	1.5"	VXP45-40		N/R			
303736	1"	VXG44.20		N/R	303710	SQS35	240v
303737	1"	VXG44.25		N/R	303584	SQS85	24v
303738	1.25"	VXG44.32		N/R	303714	SQS65	0-10v
303739	1.5"	VXG44.40		N/R	303546	SQX32	240v
303239	3/4"	VXG41.20		N/R	303545	SQX82	24v
303240	1"	VXG41.25		N/R	303548	SQX62	0-10v
303241	1.25"	VXG41.32		N/R	303149	SKD32.5	240v
303242	1.5"	VXG41.40		N/R	303144	SKD82.5	24v
303243	2"	VXG41.50		N/R	303633	SKD60	0-10v

TO ORDER YOUR PARTS
TODAY SIMPLY CALL OUR
DESIGNATED TEAM ON

0818-212220



Siemens 2 Port Valves

2 PORT SCREWED					ACTUATORS TO SUIT		
Cat No	Size	Part No	Cat No	Linkage	Cat No	Part No	Voltage
303726	3/4"	VVG44.20		N/R	303710	SQS35	240v
303727	1"	VVG44.25		N/R	303584	SQS85	24v
303728	1.25"	VVG44.32		N/R	303714	SQS65	0-10v
303729	1.5"	VVG44.40		N/R	303546	SQX32	240v
303233	3/4"	VVG41.20		N/R	303545	SQX82	24v
303234	1"	VVG41.25		N/R	303548	SQX62	0-10v
303235	1.25"	VVG41.32		N/R	303149	SKD32.5	240v
303236	1.5"	VVG41.40		N/R	303144	SKD82.5	24v
303237	2"	VVG41.50		N/R	303633	SKD60	0-10v

* Products highlighted in red are stocked centrally for fast delivery

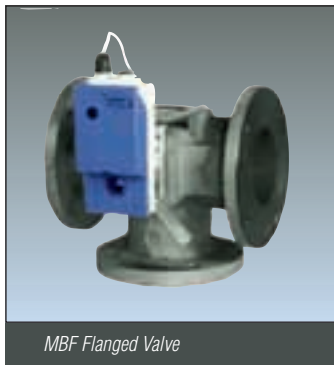


MB Screwed Valve



AR Rotary Actuators

Rotary Shoe						
3 PORT SCREWED			LINKAGE KIT		ACTUATORS TO SUIT	
Cat No	Size	Part No	Cat No	Linkage	Cat No	Description
302641	3/4"	MBX4451				
OR						
302611	3/4"	MB 1452	323945	LK2702		
302642	1"	MBX4501			323907	TAC/SWL MD10B-230 10NM DAMPER 230V
OR					OR	
302612	1"	MB 1502	323945	LK2702	323910	TAC/SWL MD20B-230 20NM DAMPER 230V
302643	1.1/4"	MBX4551			323908	TAC/SWL MD10B-24 10NM DAMPER 24V
OR					OR	
302613	1.1/4"	MB 1552	323945	LK2702	323912	TAC/SWL MD20B-24 20NM DAMPER 24V
302644	1.1/2"	MBX4601			323909	TAC/SWL MD10A-24 10NM DAMPER 24V 0-10DC
OR					OR	
302614	1.1/2"	MB 1602	323945	LK2702	323913	TAC/SWL MD20A-24 20NM DAMPER 24V 0-10DC
302645	2"	MBX4651				
OR						
302615	2"	MB 1652	323945	LK2702		



MBF Flanged Valve



AR Rotary Actuators

Rotary Shoe						
3 PORT FLANGED			LINKAGE KIT		ACTUATORS TO SUIT	
Cat No	Size	Part No	Cat No	Linkage	Cat No	Description
			TAC 9141071000			
			LINKAGE KIT LK2702 MBF			
302621	65mm	MBF4732	323944	LK2701	323910	TAC/SWL MD20B-230 20NM DAMPER 230V
302622	80mm	MBF4782	323944	LK2701	323912	OR TAC/SWL MD20B-24 20NM DAMPER 24V
302633	100mm	MBF4857	323944	LK2701	323913	OR TAC/SWL MD20A-24 20NM DAMPER 24V 0-10DC

Auxillary Switches for all above Actuators	
Cat No	Description
323921	TAC/SWL AUX SWITCH MD-S1
323922	TAC/SWL AUX SWITCH MD-S2

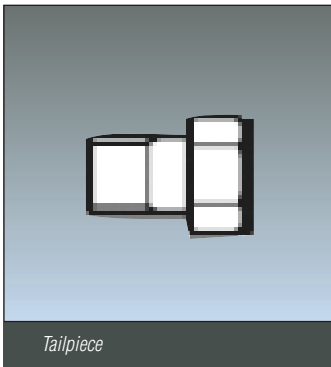
* Products highlighted in red are stocked centrally for fast delivery



Pressure Independent 2 Port Balancing/Control Valves (PIBCV)

Complete with measuring test points

Ucode	Part No.	Description
K75661	003Z0211	AB-QM TN10 threaded Qmax = 55 - 275 lph
K75660	003Z0261	AB-QM TN10 (low flow) threaded Qmax = 30 -150 lph
K75662	003Z0262	AB-QM TN15 (low flow) threaded Qmax = 55 -275 lph
K75663	003Z0212	AB-QM TN15 threaded Qmax = 90 - 450 lph
K75664	003Z0213	AB-QM TN20 threaded Qmax = 180 - 900 lph
K75665	003Z0214	AB-QM TN25 threaded Qmax = 340 - 1700 lph
K75666	003Z0215	AB-QM TN32 threaded Qmax = 640 - 3200 lph
K75667	003Z0701	AB-QM TN40/50 threaded Qmax = 2000 - 10000 lph
K75669	003Z0702	AB-QM TN65 Flanged Qmax = 8000 - 20000 lph
K75670	003Z0703	AB-QM TN80 Flanged Qmax = 112000 - 28000 lph
K75671	003Z0704	AB-QM TN100 Flanged Qmax = 15200 - 38000 lph
K75689	003Z0705	AB-QM TN125 Flanged Qmax = 36000 - 90000 lph
K75690	003Z0706	AB-QM TN150 Flanged Qmax = 58000 - 145000 lph



Pressure Independent 2 Port Balancing/Control Valves (PIBCV)

Complete with measuring test points

Ucode	Part No.	Description
K75672	003Z0231	DN10 Tailpiece (2 req'd per ABQM valve)
K75673	003Z0232	DN15 Tailpiece (2 req'd per ABQM valve)
K75674	003Z0233	DN20 Tailpiece (2 req'd per ABQM valve)
K75675	003Z0234	DN25 Tailpiece (2 req'd per ABQM valve)
K75676	003Z0235	DN32 Tailpiece (2 req'd per ABQM valve)
K75677	003Z0277	DN40 Tailpiece (2 req'd per ABQM valve)
K75678	003Z0278	DN50 Tailpiece (2 req'd per ABQM valve)
K75678	003Z0279	DN50 Tailpiece (2 req'd per ABQM valve)



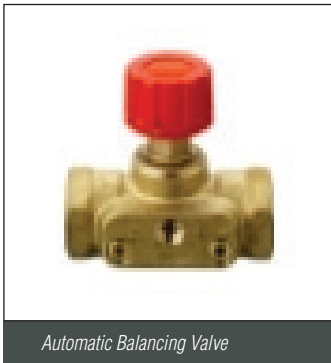
Pressure Independent 2 Port Balancing/Control Valves (PIBCV)

Complete with measuring test points

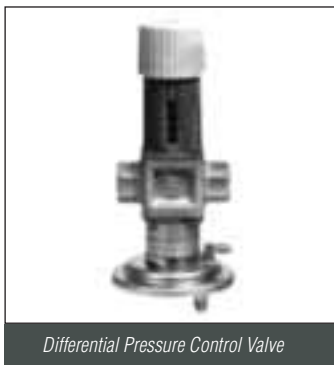
Ucode	Part No.	Description
K75649	082H8056	AMV110 NL 24V, 24 s/mm, 3-point. For valve size DN10 to DN32
U48273	082H8076	AMV110 NL 24V, 24 s/mm, 3-point 5m cable. For valve size DN10 to DN33
U48274	082H8086	AMV110 NL 24V, 24 s/mm, 3-point 10m cable. For valve size DN10 to DN34
K75636	082H8058	AMV120 NL 24V, 24 s/mm, 3-point. For valve size DN10 to DN32
K75650	082H8057	AME110 NL 24V, 24 s/mm, 0-10V. For valve size DN10 to DN32
U48275	082H8077	AME110 NL 24V, 24 s/mm, 0-10V. 5m cable. For valve size DN10 to DN33
U48276	082H8087	AME110 NL 24V, 24 s/mm, 0-10V. 10m cable. For valve size DN10 to DN34
K75635	082H8059	AME120 NL 24V, 12 s/mm, 0-10V. For valve size DN10 to DN32
U48277	082H8048	AMI140 NL 24V, 12 s/mm, 2-point. For valve size DN10 to DN32
K75680	082H3075	AME15QM 24V, 11 s/mm, 0-10V. For valve size DN40/50 to DN100
U48278	082H3078	AME55QM 24V, 8 s/mm, 0-10V. For valve size DN125 to DN150
K75647	082F1222	TWA-Z 24V, on/off, NC. For valve size DN10 TO DN20. Restrictions apply for DN25 & DN32
U48279	082F1094	ABNM-Z 24V, 0-10V. For valve size DN10 to DN32 only. Use together with adapter 082F107200
U48280	082F1072	Adapter for ABNM-Z M30x1.5mm



Automatic Balancing Valves		
Ucode	Part No.	Description
K80773	003L7601	ASV-PV 15 Internal thread PN16
K80774	003L7602	ASV-PV 20 Internal thread PN16
K80775	003L7603	ASV-PV 25 Internal thread PN16
K80776	003L7604	ASV-PV 32 Internal thread PN16
K80777	003L7605	ASV-PV 40 Internal thread PN16



Automatic Balancing Valves		
Ucode	Part No.	Description
K80793	003L7691	ASV-M 15 Internal thread PN16
K80794	003L7692	ASV-M 20 Internal thread PN16
K80795	003L7693	ASV-M 25 Internal thread PN16
K80796	003L7694	ASV-M 32 Internal thread PN16
K80797	003L7695	ASV-M 40 Internal thread PN16



Differential Pressure Control Valves (Auto Bypass)		
Ucode	Part No.	Description
306350	003N0038	AVDA 15 Int Thread, 0.1 - 1.2bar DP, Kvs 1.9, PN10
306351	003N0039	AVDA 20 Int Thread, 0.1 - 1.2bar DP, Kvs 3.4, PN10
306352	003N0040	AVDA 25 Int Thread, 0.1 - 1.2bar DP, Kvs 5.5, PN10
306363	003N8204	AVDSA 15 Int Thread, 0.05 - 0.5 bar DP, Kvs 1.9, PN16
306364	003N8205	AVDSA 20 Int Thread, 0.05 - 0.5 bar DP, Kvs 3.4, PN16
306365	003N8206	AVDSA 25 Int Thread, 0.05 - 0.5 bar DP, Kvs 5.5, PN16
U48281	003H6599	AVPA 32 Ext Thread, 0.2 - 1.0 bar DP, Kvs 12.5, PN25
U48282	003H6600	AVPA 40 Ext Thread, 0.2 - 1.0 bar DP, Kvs 16.0, PN25
U48283	003H6601	AVPA 50 Ext Thread, 0.2 - 1.0 bar DP, Kvs 20.0, PN25

Finding the right part to order is easier than you thought!

Parts Arena allows you to find and order your spare parts quickly and efficiently by utilising line drawings of components for easy identification and purchase.

Drop in to your local Heat Merchants or log on to www.heatmerchants.ie

parts arena[®]
Find and order your spare parts quickly and efficiently by utilising line drawings of components for easy identification and purchase



Motorised Control Valve

Motorised Control Valves - Commercial

HRB Rotary (shoe) 3 Port Valve, Internal Thread, DN15-50 = DZR Brass, >DN50 = CI use with AMB162 / AMB182 Actuator

Ucode	Part No.	Description
U48284	065B2225	HRB 3 PN10 20/6,3 3-way rotary int.thr
U48285	065B2227	HRB 3 PN10 25/10 3-way rotary int.thr
U48286	065B2228	HRB 3 PN10 32/16 3-way rotary int.thr
U48287	065B2229	HRB 3 PN10 40/25 3-way rotary int.thr
U48288	065B2230	HRB 3 PN10 50/40 3-way rotary int.thr
K80622	065B5165	HFE 3 PN6 65/90 3-way rotary flange
K80623	065B5180	HFE 3 PN6 80/150 3-way rotary flange
K80624	065B5200	HFE 3 PN6 100/225 3-way rotary flange
K80625	065B5225	HFE 3 PN6 125/280 3-way rotary flange
K80626	065B5250	HFE 3 PN6 150/400 3-way rotary flange

Note That Rotary valves will allow leakage of <0.05% of flow Use seated valves for 100% shutoff



Actuators

Motorised Control Valves - Commercial

AMB 162/AMB 182 Actuators

Ucode	Part No.	Description
K80121	082G403100	24V Speed : 140 s/90dg Torque : 5 N - Aux Switch
306410	082G403500	230V Speed : 140 s/90dg Torque : 5 N - Aux Switch



2 Port Valves

Motorised Control Valves - Commercial

VRB/2 Bronze External Thread Seated (lift & lay) 2 Port Valves (Incl Tailpieces) use with AMV / AME 15/16 Actuator

Ucode	Part No.	Description
K80428	065B131502	Nominal Size : DN15 : PN16 Kvs : 4.00 m3/h
K80429	065B132002	Nominal Size : DN20 : PN16 Kvs : 6.30 m3/h
K80430	065B132502	Nominal Size : DN25 : PN16 Kvs : 10.00 m3/h
K80431	065B133202	Nominal Size : DN32 : PN16 Kvs : 16.00 m3/h
K80432	065B134002	Nominal Size : DN40 : PN16 Kvs : 25.00 m3/h
K80433	065B135002	Nominal Size : DN50 : PN16 Kvs : 40.00 m3/h



3 Port Valves

Motorised Control Valves - Commercial

VRB/3 Bronze External Thread Seated (lift & lay) 3 Port Valves (Incl Tailpieces) use with AMV / AME 15/16 Actuator

Ucode	Part No.	Description
K80440	065B131501	Nominal Size : DN15 : PN16 Kvs : 4.00 m3/h
K80441	065B132001	Nominal Size : DN20 : PN16 Kvs : 6.30 m3/h
K80442	065B132501	Nominal Size : DN25 : PN16 Kvs : 10.00 m3/h
K80443	065B133201	Nominal Size : DN32 : PN16 Kvs : 16.00 m3/h
K80444	065B134001	Nominal Size : DN40 : PN16 Kvs : 25.00 m3/h
K80445	065B135001	Nominal Size : DN50 : PN16 Kvs : 40.00 m3/h



AMV/AME 15/16 Actuators

AMV / AME 15/16 Actuators

Ucode	Part No.	Description
K80030	082G302700	AMV15, 24V, Speed: 11 s/mm Stroke : 15 mm
K80031	082G302600	AMV15, 230V, Speed: 11 s/mm Stroke : 15 mm
K80032	082G302800	AME15, 24V (0 - 10V) , Speed 11 s/mm, Stroke 15 mm
K80033	082G302900	AMV16, 24V, Speed: 7 s/mm Stroke : 15 mm
K80034	082G303000	AMV16, 230V , Speed: 7 s/mm Stroke : 15 mm
K80035	082G303100	AME16, 24V (0 - 10V), Speed 7 s/mm, Stroke 15 mm



2 Port Valves

VF2 - Cast Iron, PN16 Flanged, Seated (lift & lay) 2 Port Valves

use with AMV/AME 55/56 at sizes 50-100 mm & AMV/AME 85/86 at sizes 125-150 mm

Ucode	Part No.	Description
K80542	065B175000	Nominal Size : DN50 : PN16 Kvs : 40.00 m3/h
K80543	065B317000	Nominal Size : DN65 : PN16 Kvs : 63.00 m3/h
K80544	065B318500	Nominal Size : DN80 : PN16 Kvs : 100.00 m3/h
K80545	065B320500	Nominal Size : DN100 : PN16 Kvs : 145.00 m3/h
K80546	065B323000	Nominal Size : DN125 : PN16 Kvs : 220.00 m3/h
K80547	065B325500	Nominal Size : DN150 : PN16 Kvs : 320.00 m3/h



3 Port Valves

VF3 - Cast Iron, PN16 Flanged, Seated (lift & lay) 3 Port Valves

use with AMV/AME 55/56 at sizes 50-100 mm & AMV/AME 85/86 at sizes 125-150 mm

Ucode	Part No.	Description
K80559	065B165000	Nominal Size : DN50 : PN16 Kvs : 40.00 m3/h
K80560	065B166500	Nominal Size : DN65 : PN16 Kvs : 63.00 m3/h
K80561	065B168000	Nominal Size : DN80 : PN16 Kvs : 100.00 m3/h
K80562	065B168500	Nominal Size : DN100 : PN16 Kvs : 145.00 m3/h
K80563	065B312500	Nominal Size : DN125 : PN16 Kvs : 220.00 m3/h
K80564	065B315000	Nominal Size : DN150 : PN16 Kvs : 320.00 m3/h



AMV/AME 55/56 Actuators

AMV / AME 55/56 Actuators

Ucode	Part No.	Description
K80080	082H302000	AMV55, 24V Speed : 8 s/mm Stroke : 40 mm
K80081	082H302100	AMV55, 230V Speed : 8 s/mm Stroke : 40 mm
K80082	082H302200	AME55,24V (0 - 10V) Speed : 8 s/mm Stroke 40 mm
K80083	082H302300	AMV56, 24V Speed : 4 s/mm Stroke : 40 mm
K80084	082H302400	AMV56, 230V Speed : 4 s/mm Stroke : 40 mm
K80085	082H302500	AME56, 24V (0 - 10V) Speed : 4 s/mm Stroke : 40 mm



AMV/AME 85/86 Actuators

AMV / AME 85/86 Actuators

Ucode	Part No.	Description
K80100	082G145000	24V Speed : 8 s/mm Stroke : 40 mm
K80101	082G145100	230V Speed : 8 s/mm Stroke : 40 mm
K80102	082G145200	24V (0 - 10V) Speed : 8 s/mm Stroke : 40 mm
K80103	082G146000	24V Speed : 3 s/mm Stroke : 40 mm
K80104	082G146100	230V Speed : 3 s/mm Stroke : 40 mm
K80105	082G146200	24V (0 - 10V) Speed : 3 s/mm Stroke : 40 mm

ESBE 3 Port Rotary Valves



3 Port Threaded



3 Port Brass Threaded



3 Port Iron Flanged



60 Series Actuator



90 Series Actuator

ESBE 3 Port Rotary Shoe Valves

Cat No.	ESBE Part Number	Description	Kvs	Actuator Compatibility
3 Port Rotary Valves PN6 1100 C				
307242	VRG131 3 WAY VALVE 3/4" CV = 6.30	DN20	8	Series 60 or 90
307244	VRG131 3 WAY VALVE 1.0" CV = 10.00	DN25	12	
307245	VRG131 3 WAY VALVE 1.25" CV = 16.00	DN32	18	
307246	VRG131 3 WAY VALVE 1.5" CV = 25.00	DN40	28	
307247	VRG131 3 WAY VALVE 2.0" CV = 40.00	DN50	44	
3 Port Rotary Valve (Brass Threaded) PN10 1300 C				
307236	VRG131 3 WAY VALVE 1/2" CV = 1.00	DN15	1	Series 60 or 90
307237	VRG131 3 WAY VALVE 1/2" CV = 1.63	DN15	1.2	
307238	VRG131 3 WAY VALVE 1/2" CV = 2.50	DN15	1.6	
307242	VRG131 3 WAY VALVE 3/4" CV = 6.30	DN20	6.3	
307244	VRG131 3 WAY VALVE 1.0" CV = 10.00	DN25	8	
307018	3MG 3/4" 3PORT BRASS VALVE KV = 4.0	DN20	4	
307019	3MG 3/4" 3PORT BRASS VALVE KV = 6.3	DN20	6.3	
307245	VRG131 3 WAY VALVE 1.25" CV = 16.00	DN32	16	
3 Port Rotary Valve (Flanged) PN6 1100 C				
307100	3F20 3PORT ROYARY VLV FLANGED PN6	DN20	12	Series 60 or 90
307101	3F25 3PORT ROYARY VLV FLANGED PN6	DN25	18	
307102	3F32 3PORT ROYARY VLV FLANGED PN6	DN32	28	
307103	3F40 3PORT ROYARY VLV FLANGED PN6	DN40	44	
307008	3F50 50MM 3PORT FLG IRON VLV KV = 60	DN50	60	
307009	3F65 65MM 3PORT FLG IRON VLV KV = 90	DN65	90	Series 90
307013	3F80 80MM 3PORT FLG IRON VLV KV = 150	DN80	150	
307014	3F 100MM 3PORT FLG IRON VLV KV = 225	DN100	225	
307015	3F 125MM 3PORT FLG IRON VLV KV = 280	DN125	280	
307016	3F 150MM 3PORT FLG IRON VLV KV = 400	DN150	400	

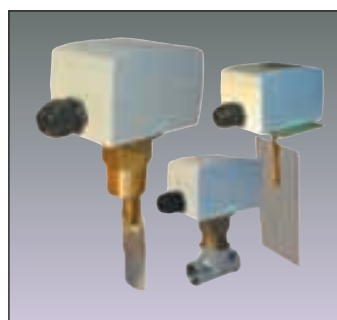
ESBE Actuators

	ESBE Part No	Voltage	Action	Order Code
307258	62M	24V ON/OFF		ARA664 ACTUATOR 24VAC 50HZ 120 SEC
307263	62P	24V 0-10VDC		ARA659 ACTUATOR PROP 24VAC/DC 50HZ
307262	67M	230V ON/OFF		ARA672 ACTUATOR 230V 50HZ 240 SEC
307048	93M	50HZ ON/OFF 24V AC 3 Point SPDT		93M 24V 50HZ ON/OFF VALVE ACTUATOR
307050	92P	24V 0-10VDC 10-20 MA or 4-20 MA		92P 24V 0-10VDC VALVE ACTUATOR

Pick up your free copy of our **Heat Merchants Catalogue** at your nearest branch to view our full range of Plumbing, Heating and Renewable Products



* Products highlighted in red are stocked centrally for fast delivery



EAA & ELF Flow Switch



F61 Water Flow Switch



EC Thermostat



EC Thermostat



EFP Freeze Protection

Electro Controls Air and Liquid Flow Switches - SPDT 15(8) Amps

Cat No						
323160	EAA 1	Air Flow	IP54	175mm x 80mm paddle		1st Choice
323161	ELF 1	Water Flow	IP54	Standard - For 1 to 8" Pipes		1st Choice
323162	ELF 2	Water Flow	IP65	Weatherproof - For 1 to 8" Pipes		
323166	ELF 3W	Water Flow	IP65	W/Proof Sensitive - For 1 to 8" Pipes		
323167	ELF 4W	Water Flow	IP65	S/Steel Sensitive - For 1 to 8" Pipes		
323186	EE 6P	ELF Paddle		6" Paddle for ELF Flow Switch Stainless Steel		

Johnson Controls F6 1/62 Flow Switches – SPDT 15 Amps resistive @ 230V 50Hz

Cat No						
687100	F61SB-9100	1*BSP :Liquid, Flow Temp = +4C to 120C : 1" to 8" Pipes				2nd Choice
687102	F61MB-9100	1*NPT :Liquid, Flow Temp = -30C to 120C : 1" to 8" Pipes				
687137	PLT 69-11R	Replacement 6" Stainless Steel paddle for the above Flow Switches				
687101	F62AA-9001	Air Flow Switch Stainless Steel paddle 55mm x 175mm				

Honeywell Air and Water Flow Switches

Cat No						
310620	MCD AF1JE	AF1-JE Air Flow Switch SPDT Max Temperature 300F				3rd Choice
310630	MCD FS1-JE	FS1-JE Liquid Flow Switch 1/2"BSP SPDT Switch				3rd Choice
310631	MCD FS4-3JE	FS4-3JE Liquid Flow Switch 1"& above SPDT Switch				

Capillary Thermostats 1,2,3 and 4 stages

Cat No	Part No	Range oC	Diff'l oC	Capillary	IP Rating	Stage & Switch
323000	EC 2	-20 to +40	0.5	2m	IP43	1 x 15(3)A
323001	EC 3	-20 to +40	1.5	2m	IP43	1 x 15(6)A
323004	EC 6	0 to 100	2	2m	IP43	1 x 15(4)A
323005	EC 7	0 to 200	5	2m	IP43	1 x 15(6)A
323006	EC 8	0 to 200	Hand Reset	2m	IP43	1 x 15(6)A
323008	EC 3D	-15 to +45	1.5	Rigid Stem	IP43	1 x 15(8)A
323011	EC 6D	0 to 70	2	Rigid Stem	IP43	1 x 15(8)A
323012	EC 6DM	30 to 65	Hand Reset	Rigid Stem	IP43	1 x 15(8)A
323002	EC 3W	-20 to +40	1.5	2m	IP65	1 x 15(6)A
323010	EC 8W	0 to 200	Hand Reset	2m	IP65	1 x 15(6)A
323015	EMC 22A	-20 to +40	1 to 10 Adj.	2m	IP43	2 x 15(3)A
323180	EE 1A	305mm Duct Bulb Holder for capillary stats and cable sensors				
323181	EE 1B	Brass Bulbwell 1/2" BSP 155mm x 8.2mm EC & EMC Sensors				
323183	EE STE	Stainless Steel Bulbwell 1/2" BSP 155 x 8.2mm EC,EMC				

Freeze Protection & Outside Air Thermostats

Cat No	Part No	Range oC	Diff'l oC	Capillary	IP Rating	Stage & Switch
323025	EFP 1	-15 to +15	2	6m	IP43	1 x 24(10)A
323026	EFP 2	-15 to +15	Hand Reset	6m	IP43	1 x 24(10)A
323027	EFP 3	-15 to +15	2	3m	IP43	1 x 24(10)A
323032	EFP 1W	-15 to +15	2	6m	IP65	1 x 24(10)A
323033	EFP 2W	-15 to +15	Hand Reset	6m	IP65	1 x 24(10)A
323185	EE 1C	Capillary Clips for EFP Thermostats (6 per pack)				

* Products highlighted in red are stocked centrally for fast delivery

Flow Switches & Thermostats



Room Stats



EBS Immersion



ESS Strap-On



EL & ELL Level Switch

Outside Frost Thermostats

Cat No	Part No	Range oC	Diff'l oC	Capillary	IP Rating	Stage & Switch
323030	EOF-01	-20 to 30C	1		IP65	1 x 10(3)A

Weatherproof Space Thermostats

Cat No	Part No	Range oC	Diff'l oC	Max Amb.	IP Rating	Stage & Switch
323119	ECS 3	-20 to 40	1.5	60oC	IP65	1 x 15(6)A
323120	ECS 4	-20 to 40	3.5	60oC	IP65	1 x 15(6)A
323121	ECS 6	0 to 80	2.5	60oC	IP65	1 x 15(6)A

Immersion Thermostats 1 and 2 stage

Cat No	Part No	Range oC	Diff'l oC	Stem	IP Rating	Stage & Switch
323089	EBS 1	0 to 35	0.5	120mm	IP43	1 x 10(3)A
323091	EBS 2	0 to 80	2	100mm	IP43	1 x 10(3)A
323090	EBS 3	35 to 95	4	100mm	IP43	1 x 15(5)A
323095	EBS 8	60 to 95	Hand Reset	100mm	IP43	1 x 15(5)A
323096	EBS 9	95 to 130	Hand Reset	100mm	IP43	1 x 15(5)A
323102	EBD 1	0/80C auto	0/80C auto	100mm	IP43	2 x 10(3)A
323099	EBD 2	35/95C auto	35/95C auto	100mm	IP43	2 x 15(5)A
323100	EBD 8	35/95C auto	60/95C hand	100mm	IP43	2 x 15(5)A
323184	EE ST9	Stainless Steel Pocket 1/2" BSP 100 x 7mm EBS				
323181	EE 9B	Brass pocket 1/2 BSP				

Strap on Thermostats

Cat No	Part No	Control oC	Limit oC	Stem	IP Rating	Stage & Switch
323105	BRC	20 to 90C	5	Single	IP30	1 x 15(3)A
323106	ESS 1	-25 to +45C	2	Single	IP43	1 x 10(3)A
323107	ESS 2	0 to 70C	2	Single	IP43	1 x 10(3)A

Room Thermostats

Cat No	Part No	Range oC	Htg or Clg	Features
323040	TA 2	5 to +30	Htg or Clg	Knob Adjustment 1 x 10(3)A
323047	MTR10 005	5 to +30	1Htg & 1Clg	Knob Adj. Bimetal
323049	EMR 22A	0 to +50	Htg or Clg	1/10C Adj Diff per Stage 2 x 15(3)A

Electro Controls – Horizontal Mounted Liquid Level Switches - SPDT

Cat No	Part No	Mounting	Diff (mm)	Switch	Enclosures	Med Temp
323170	ELL 01	Horizontal	12mm Diff	15(8) Amp	Standard IP54	90C
323171	ELL 02	Horizontal	12mm Diff	15(8) Amp	W/Proof IP65	90C

Vertical Mounted Liquid Level Switches - SPDT

Cat No	Part No	Mounting	Diff (mm)	Switch	Enclosures	Med Temp
324070	EL AL	Vertical	40	6 (3) Amp	Low Level Alarm	55C
324071	EL AH	Vertical	40	6 (3) Amp	High Level Alarm	55C
323174	ETF 1	Vertical	30-900mm	10(5) Amp	Standard IP54	65C

* Products highlighted in red are stocked centrally for fast delivery



930 Pressure Switch

Air Differential Pressure Switches

Code	Part No	Range	Differential	Pascals	Max Press	Media Temp	Enclosure
323113	930-80-ATP	20-200	10	1000	1.5(0.4)A	-20 + 85oC	IP65
323114	930-83-ATP	50-500	20	1000	1.5(0.4)A	-20 + 85oC	IP54
323115	930-80-ATP	20-200	10	1000	1.5(0.4)A	-20 + 85oC	IP54
323116	930-85-ATP	200-1000	100	1000	1.5(0.4)A	-20 + 85oC	IP54
Code	Part No	Range mbar	Diff mbar	Max Press	SPDT	IP	
323296	EADP 2	0.2 to 2.0	0.2	50 mbar	1.5(0.4)A	IP54	
324080	EADP 5	0.5 to 5.0	0.2	50 mbar	1.5(0.4)A	IP54	
323116	EADP 10	2.0 to 10	1	50 mbar	1.5(0.4)A	IP54	
324082	EADP 25	5.0 to 25	1.5	50 mbar	1.5(0.4)A	IP54	
323113	EADP 2W	0.2 to 2.0	Weatherproof EADP2	1.5(0.4)A	IP65		
324084	EADP 10W	2.0 to 10	Weatherproof EADP10	1.5(0.4)A	IP65		
323117	EFS 02	0.13 to 30	0.05 to 2.0	35mbar	10(2.0)A	IP30	
323118	EFS 02HT	0.13 to 30	0.05 to 2.0	35mbar	10(2.0)A	IP30	
323189	EE D1	EFS-02 Duct Connection set					
323190	930-DFK-3	Duct Connection Kit	60 deg C				

parts arena^o

Find and order your spare parts quickly and efficiently by utilising line drawings of components for easy identification and purchase



Finding the right part to order is easier than you thought!

Parts Arena allows you to find and order your spare parts quickly and efficiently by utilising line drawings of components for easy identification and purchase.

Drop in to your local Heat Merchants or log on to
www.heatmerchants.ie



RVL 470 Controller

Siemens Comp / Optimiser

Code		Own Brand
303293 or 306062	RVL 470 COMPENSATOR / OPTIMISER	
303292 or 350110	RVL471, as RVL470 + DHW CONTROL	
303284 or 306064	RVL 472 CMPSR OPTMR + DHW + 2 BURN	
303109 or 303110	OUTSIDE AIR TEMPERATURE SENSOR	380192
303108	SPACE TEMPERATURE SENSOR	380198
I303649	IMMERSION TEMPERATURE SENSOR	380206
	IMMERSION SENSOR POCKET	380555
303111	STRAP-ON WATER TEMPERATURE SENSOR	380194
303267	RVP300 COMPENSATOR / OPTIMISER	
303268	RVP310, as RVP300 + DHW CONTROL	



Duct Temperature Sensors

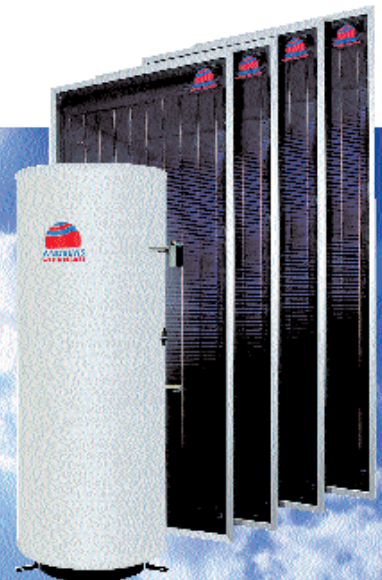


Temperature Sensors

Working towards a cleaner future

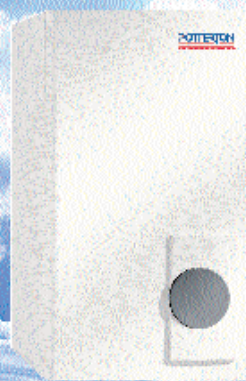
SOLARflo

A complete solar thermal solution for both commercial condensing boiler and direct fired water heating applications.



Paramount two

A range of technically advanced wall hung condensing boilers. Lightweight, ultra low noise, combining the latest heat exchanger technology and state of the art control systems.



Established values.
Leading edge technology

HEAT MERCHANTS

SVT Optimiser Only Controllers – SVT

Code	Mfr Order Code		Own Brand
302450	SVT 4201	Optimiser c/w DR 2253 Room Temp. Detector + Analogue Clock	
302452	SVT 4251	Optimiser c/w DR 2253 Room Temp. Detector + Digital Clock	
302462	561-9-260	SVT & CSC Spare Analogue Clock	
302464	561-9-261	SVT & CSC Spare Digital Clock	



CSC Controller

Compensator and or Optimiser Controllers – CSC

Code	Mfr Order Code		Own Brand
302518	CSC 5252	24V or 230V Compensator less Timeswitch	
302519	CSC 5352	24V or 230V Compensator with Timeswitch	
Outside Air Sensors			
304588	-40 to +40C	TAC 5126060000 SENSOR TEMPR OUTDOOR	380304
Surface and Immersion Sensors			
304589	5 to 120C	TAC 5126070000 SENSOR TEMPR CONTACT	380306
304590	5 to 120C	TAC 5126080000 SENSOR TEMPR PIPE TELESC	380316
323981	Pocket for 304590		380556
Room Temperature Sensors			
Non Adjustable			
304508	-5 to + 40C	TAC 004604100 SENSOR ROOM TEMP STR600	380310
Exposed Adjustment			
304555	+10 to 35C	TAC 004604300 SENSOR ROOM ADJUSTABLE	

DC-1100 Compensator/Optimiser

Code	Mfr Part No	Description	Own Brand
304355	DC1100 04-03-105	COMPENSATOR / OPTIMISER	
304582	ST0600D 5126000000	OUTSIDE AIR TEMPERATURE SENSOR Above directly replaces A702 304391	380224
324332	STR600D 0.04604.000	SPACE TEMPERATURE SENSOR Above directly replaces A701 304390	380230
304583	STP600D 5126010000	IMMERSION TEMPERATURE SENSOR Above replaces A703 304392 but is not a direct replacement & needs pocket 323981 below	380240
323981	DWA005 9121066000	IMMERSION SENSOR POCKET for above sensor	380555
304584	STC600D 5126020000	STRAP-ON WATER TEMPERATURE SENSOR Above directly replaces A704 304393	380336



Energy Controller

DC-1400 Energy Controller

Code	Mfr Part No	Description	Own Brand
304354	DC1400	COMPENSATOR / OPTIMISER	
304588	ST0600 5126060000	OUTSIDE AIR TEMPERATURE SENSOR	380444
304508	STR600 0.046041.00	SPACE TEMPERATURE SENSOR-ADJUSTABLE	380450
304507	STR612 0.046047.00	SPACE TEMPERATURE SENSOR-NON ADJUSTABLE	
304590	STP660 5126080000	IMMERSION TEMPERATURE SENSOR-TELESCOPIC	380460
323981	DWA005 9121066000	IMMERSION SENSOR POCKET for above sensor	380555
304589	STC600 5126070000	STRAP-ON WATER TEMPERATURE SENSOR	380446

Grundfos Service Replacement Pump Heads



UPS Head

Single Head multi-speed 240V 50Hz Commercial Pumps

415 50Hz 3PH	Single Head	Twin Head	Replaces	240V 50Hz 1PH
Cat No			Cat No	
	UPS 40-50		144945	UP 42-42
	UPS 40-80		144946	UP 42-70
144940	UPS 40-50F		UP 42-42	
144941	UPS 40-80F		UP 42-70	



UPC Head

UPC & UMC Replacement Pump Heads less Terminal Boxes

415 50Hz 3PH	Single Head	Twin Head	Replaces	240V 50Hz 1PH
Cat No			Cat No	
144950	UPC 40-60	UPCD 40-60	144980	UPS 40-60
144951	UPC 40-120	UPCD 40-120	144981	UPS 40-120
144955	UMC 50-60	UMCD 50-60	144985	UMS 50-60
144956	UPC 50-120	UPCD 50-120	144986	UPS 50-120
144960	UMC 65-60	UMCD 65-60	144990	UMS 65-60
144961	UPC 65-120	UPCD 65-120	144991	UPS 65-120
144965	UMC 80-60	UMCD 80-60		UMS 80-60
144966	UPC 80-120	UPCD 80-120		UPS 80-120
144970	UMC 100-60	UMCD 100-60		UMS 100-60



UPS Terminal Box

UPS & UPSD Service Replacement Heads less Terminal Boxes

415 50Hz 3PH	Single Head	Twin Head	Replaces	240V 50Hz 1PH
Cat No			Cat No	
143910	UPS 40-60/2	UPSD 40-60/2	143900	
143911	UPS 40-120/2	UPSD 40-120/2	143901	
143912	UPS 50-60/4	UPSD 50-60/4	143902	
143913	UPS 50-120/2	UPSD 50-120/2	143903	
143914	UPS 65-60/4	UPSD 65-60/4	143904	
143915	UPS 65-120/2	UPSD 65-120/2	143905	
143916	UPS 80-60/4	UPSD 80-60/4		
143917	UPS 80-120/2	UPSD 80-120/2		



UPC Terminal Box

Terminal Boxes for 240V 50Hz 1ph Service Replacement Heads

415 50Hz 3PH	Single Head	Twin Head	Replaces	240V 50Hz 1PH
Cat No				
144932	UPS 40-60/2	UPSD 40-60/2	Terminal Box including Capacitor	
143951	UPS 40-120/2	UPSD 40-120/2	Terminal Box including Capacitor	
143954	UPS 65-120/2	UPSD 65-120/2	Terminal Box including Capacitor	
144930	UPC 40-60	UPCD 40-60	Terminal Box including Capacitor	
144931	UPC 40-120	UPCD 40-120	Terminal Box including Capacitor	
144932	UMC 50-60	UMCD 50-60	Terminal Box including Capacitor	
144933	UPC 50-120	UPCD 50-120	Terminal Box including Capacitor	
144934	UPC 65-120	UPCD 65-120	Terminal Box including Capacitor	
144935	UPC(D) & UMC(D)	Terminal Box for ALL UPC(D) and UMC(D) 3 phase pumps		

Grundfos Service Replacement Pump Heads

Terminal Boxes for 415V 50Hz 3ph Service Replacement Heads

UPC(D) & UMC(D) – Terminal Box for ALL UPC(D) and UMC(D) 3 phase pumps

Cat No	Pump Model	Twin Head	Type of Fitting	
144009	UP 40F	UPC 40	1.1/2" Counter Flanges	per pair
144010	UP 40F	UPC 40	2" Counter Flanges	per pair
144340	UP 25	UPE 25	1" BSP Union Set	
144341	UP 25	UPE 25	1.1/4" BSP Union Set	
144342	UP 32	UPE 32	1.1/4" BSP Union Set	
144350	UPS 32	UPE 32	1.1/4" Flange Set	
144352	UPS 50	UPE 50	2" Flange Set	
144353	UPS 65	UPE 65	2.1/2" Flange Set	
144354	UPS 80	UPE 80	3" Flange Set	
144355	UPS100	UPE 100	4" Flange Set	
144920	UP(S)D 40/50	UP(S)D 80	Blanking Plate	
144922	Various		Blanking Plate for all other Twin head Models	
144938	UP 20		22mm Isolating Valves	per pair

Why buy from us?

- 41 Branches located nationwide with 10 branches located in the Dublin area and 6 branches in Cork
- All branches hold the top selling spare parts for today's market.
- Each branch can change their spare parts stock profile to suit your needs.
- Daily delivery to all branches.
- Access to over 60,000 parts between our Irish and UK distribution networks
- Direct access to all major parts suppliers across Ireland, UK & Europe.
- In-branch experts trained and certified on gas spares.
- Our online and in branch parts identification system (Parts Arena) available for all RGII customers. Every boiler type and model listed with exploded diagrams for easy look-ups.
- On-line access for all account holders to Parts Arena.
- Heat Merchants have been the chosen supplier of spare parts to Bord Gais parts centre for over 10 years
- New commercial spares parts range coming soon. Pop into your nearest branch and pick up our brochure.
- New commercial boiler range also available from 40kw to 200kw.

WILO Replacement Pump Heads



TOP-S & SD Replacement Pump Heads

415V 50Hz 3 phase	Single Head	Description
CAT No		TOP-S & SD Replacement Pump Heads
145855	TOP-S 40/7	
145856	TOP-S 40/10	
145858	TOP-S 50/7	
145859	TOP-S 50/10	
002 006 755	TOP-S 65/7	
145861	TOP-S 65/10	
145862	TOP-S 65/13	
145863	TOP-S 80/7	
145864	TOP-S 80/10	



Offering you a full range of Commercial Boilers from leading Suppliers!



Paramount 2 Boiler 30KW - 115KW



Sirius WH Series 50KW - 110KW



Sirius FS Series 50KW - 160KW

To view our range or for more technical information drop in to your local branch

For a full listing of our branches, just view the back page of this brochure.

Damper Motors									
Code	Siemens	Siemens	Code	Electro	Code	TAC/ Belimo	Johnson	Sontay	Description
5NM									
305620	S5-24	GDB131.1E	416100	EK4-24	323904	MD5B / LM24	M9304-AGA-1N	VA-DAN1	Damper motor 4NM 24v
305621	S5-24AS2	GDB136.1E	416101	EK4-24S	323905	MD5B / LM24S	M9304-AGC-1N	VA-DAN1.S	Damper motor 4NM 24v + aux switch
305623	S5-230	GDB331.1E	416102	EK4-230	323902	MD5B / LM230	M9304-ADA-1N	VA-DAN2	Damper motor 4NM 230v
305624	S5-230AS2	GDB336.1E	416103	EK4-230S	323903	MD5B LM230S	M9304-ADC-1N	VA-DAN2.S	Damper motor 4NM 230v + aux switch
305622	S5-24M	GDB161.1E	416104	EK4-24M	323906	MD5A / LM24-SR	M9304-GGA-1N	VA-DMN1.1	Damper motor 4NM 0-10v
10NM									
305627	S10-24	GLB131.1E	416105	E08-24	323908	MD10B / NM24	M9108-AGA-1	VA-DAS1	Damper motor 8NM 24v
305628	S10-24AS2	GLB136.1E	416106	E08-24S		NM24+SN2	M9108-AGC-1	VA-DAS1.S	Damper motor 8NM 24v + aux switch
305630	S10-230	GLB331.1E	416107	E08-230	323907	MD10B / NM230	M9108-ADA-1	VA-DAS2	Damper motor 8NM 230v
305631	S10-230AS2	GLB336.1E	416108	E08-230S		NM230+SN2	M9108-ADC-1	VA-DAS2.S	Damper motor 8NM 230v + aux switch
305629	S10-24M	GLB161.1E	416109	E08-24M	323909	MD10A / NM24SR	M9108-GGA-1	VA-DMS1.1	Damper motor 8NM 0-10v
15NM									
305635	S15-24	GEB131.1E	416111	E16-24	323912	MD20B / SM 24	M9116-AGA-1	VA-DA1	Damper motor 16NM 24v
305635 + 305254	S15-24 + AS1	GEB136.1E	416112	E16-24S	323912	MD20B / SM24S	M9116-AGC-1	VA-DA1.S	Damper motor 16NM 24v + aux switch
305638	S15-230	GEB331.1E	416113	E16-230	323910	MD20B / SM 240	M9116-ADA-1	VA-DA2	Damper motor 16NM 230v
305638 + 305254	S15-230 + AS1	GEB336.1E	416114	E16-230S		SM240+S2	M9116-ADC-1	VA-DA2.S	Damper motor 16NM 230v + aux switch
305637	S15-24M	GEB161.1E	416115	E16-24M	323913	MD20A / SM24SR	M9116-GGA-1	VA-DM1.1	Damper motor 16NM 0-10v
305637 + 305254	S15-24M + AS1		416116	E16-24MS			M9116-GGC-1	VA-DM 1.1S	Damper motor 16NM 0-10v + aux switch
25NM									
303488	S25-24	GBB131.1E	416119	E24-24		AM 24	M9124-AGA-1	VA-DAL1	Damper motor 24NM 24v
303488 + 305254	S25-24 + AS1	GBB136.1E	416120	E24-24S		AM24+SA2	M9124-AGC-1	VA-DAL1.S	Damper motor 24NM 24v + aux switch
303486	S25-230	GBB331.1E	416121	E24-230	323910	MD20B / AM 230	M9124ADA-1	VA-DAL2	Damper motor 24NM 230v
303486 + 305254	S25-230 + AS1	GBB336.1E	416122	E24-230S		AM230+SA2	M9124-ADC-1	VA-DAL2.S	Damper motor 24NM 230v + aux switch
303487	S25-24M	GBB161.1E	416123	E24-24M		AM24SR	M9124GGA-1	VA-DML1.1	Damper motor 24NM 0-10v
303487 + 305254	S25-24M + AS1	GBB166.1E	416124	E24-24MS		AM24SR+SA2	M9124-GGC-1	VA-DML1.1S	Damper motor 24NM 0-10v + aux switch
35NM									
305585	S35-24	GIB131.1E	416125	E32-24	323914	MD40B / GM24	M9132-AGA-1		Damper motor 32NM 24v
305585 + 305254	S35-24 + AS1	GIB136.1E	416126	E32-24S		GM24+S2	M9132-AGC-1		Damper motor 32NM 24v + aux switch
305584	S35-230	GIB331.1E	416127	E32-230		GM240	M9132GGA-1		Damper motor 32NM 230v
305584 + 305254	S35-230 + AS1	GIB336.1E	416128	E32-230S		GM240+S2	M9132-ADC-1		Damper motor 32NM 230v + aux switch
305589	S35-24M	GIB161.1E	416129	E32-24M		GM24SR	M9132-GGA-1		Damper motor 32NM 0-10v
305589 + 305254	S35-24M + AS1	GIB166.1E		E32-24MS			M9132-GGC-1		Damper motor 32NM 0-10v + aux switch
7NM Spring return									
305642	SF7-24	GMA121.1E			309372	LF24	M9206-BGA-1S		Damper motor 6NM 24v spring ret.
305642 + 305254	SF7-24 + AS1	GMA126.1E				LF24-S	M9206-BGB-1S		Damper motor 6NM 24v + aux switch spring ret
305644	SF7-24M	GMA161.1E				LF24-SR			Damper motor 6NM 0-10v
305645	SF7-230	GMA321.1E				LF230	M9206-BDA-1S		Damper motor 6NM 230v On/Off spring ret
305645 + 305254	SF7-230 + AS1	GMA326.1E				LF230-S	M9206-BDB-1S		Damper motor 6NM 230v On/Off + aux switch spring ret
16NM Spring return									
303718	SF16-24	GCA121.1E	416130	ER16-24-2		AF24	M9216-BGA-1	VA-DA1F	Damper motor 16NM on/off 24v spring ret.
303718 + 305254	SF16-24 + AS1	GCA126.1E	416131	ER16-24-2S		AF24-S	M9216-BGC-1	VA-DA1.FS	Damper motor 16NM 24v on/off + aux switch spring ret.
305595 + 305254	GCA131.1E + AS1		416132	ER16-230			M9216-HGA-1 M9216-AGA-1	VA-DA2.F	Damper motor 16NM 24v 3 position spring ret
303719	SF16-230	GCA321.1E				AF230	M9216-BDA-1		Damper motor 16NM 230v 3 position spring ret
303719 + 305254	SF16-230 + AS1	GCA326.1E	416133	ER-16-230S		AF230-S	M9216-BDC-1	VA-DA2.FS	Damper motor 16NM 230v 3 position + aux switch spring ret
303717	SF16-24M	GCA161.1E	416134	ER16-24M		AF24-SR	M9216-AGA-1	VA-DM1.1F	Damper motor 16NM 0-10v Proportional spring ret.
303717 + 305254	SF16-24M + AS1	GCA166.1E	416135	ER16-24MS		AF24SR-S	M9216-AGC-1	VA-DM1.1FS	Damper motor 16NM 0-10v + aux switch spring ret.

Refer to Manufacturer for suitable linkage kits and aux switch kits

*** Products highlighted in red are stocked centrally for fast delivery**

Landon Kingsway Free Fall Fire Valves



FFF Screwed Valve

Screwed Valves for Oil & Gas comprising: Valve, levered weight c/w 9M stainless steel cable, anchor hook, 160F fusible link, 2 wood screw + 1.1/4" BSP pulleys, and a Mind Your Head label

Cat No	Part No	Size	Description
412140	10/9037/01	1/2"	Valve c/w installation pack
412141	10/9037/05	3/4"	Valve c/w installation pack
412142	10/9037/09	1"	Valve c/w installation pack
412143	10/9037/13	1.1/4"	Valve c/w installation pack
412144	10/9037/17	1.1/2"	Valve c/w installation pack
412145	10/9037/21	2"	Valve c/w installation pack
412138	10/9037/25	2.1/2"	Valve c/w installation pack
412139	10/9037/29	3"	Valve c/w installation pack



Manual Quick Release

Flanged Valve Sets to PN16

412132	10/9037/02	1/2"	Valve c/w installation pack
412133	10/9037/06	3/4"	Valve c/w installation pack
412134	10/9037/10	1"	Valve c/w installation pack
412146	10/9037/14	1.1/4"	Valve c/w installation pack
412147	10/9037/18	1.1/2"	Valve c/w installation pack
412148	10/9037/22	2"	Valve c/w installation pack
412135	10/9037/26	2.1/2"	Valve c/w installation pack
412136	10/9037/30	3"	Valve c/w installation pack
412137	10/9037/34	4"	Valve c/w installation pack

Quick Release Mechanisms

402101	10/9003/01	MQR	Manual Quick Release Button
402102	10/9010/01	SQR Mk1	Solenoid Quick Release 230V 50Hz
402103	10/9010/02	SQR Mk2	As SQR Mk1 + Remote Alarm Contacts
402105	10/9017/01	ELK	Electromek quick release mechanism
412170	10/9038/01	SVK	Severlek Electrical Quick Release Button
402109		ETL	Electro Thermal Link



SQR Mk II

Free Fall Fire Valve Lubricating Compound

412125	99/0138/53	Tube of lubricating compound (No 90) 1/2"-3" Valves
412127	99/0138/52	Tube of lubricating compound (No 44) 4"-6" Valves

Spares & Accessories for Free Fall Fire Valves

412155	10/9036/02	3/4" Dia. Pulley with Screw-eye Wood thread
412042	10/9036/04	1.1/2" Dia. Pulley with Screw-eye Wood Thread
412048	10/9036/01	3/4" Dia. Pulley with Screw-eye 1/4" BSP thread
412156	10/9036/05	1.1/2" Dia. Pulley with Screw-eye 1/4" BSP Thread
412051	10/0303/01	Wall Anchor Screw Wood thread
412052	10/9036/03	Wall Anchor Screw 1/4" BSP thread
412151	99/0087/01	S' Cable Hook - Brass
412153	10/0157/08	9 Metre (30ft) length of Stainless Steel Wire
412154	10/0045/01	Connector for Stainless Steel wire
412158	10/0340/01	Heavy Tension Spring for 1.1/2" to 3" F.F.F.Valves
412050	10/0121/01	Mind Your Head Warning notice
412053	99/0097/01	Spare Turnbuckle cable tensioner for 2" valves and above
412054	10/0335/01	Small bag of fittings for F.F.F.Valves upto 1.1/2"
412055	10/0336/01	Large bag of fittings for F.F.F.Valves from 2" to 4"



Severlek

Fusible Links and Mercury Switches

412152	10/9028/01	71C (160F) Fusible Link
412168	10/9028/03	92C (198F) Fusible Link
412160	10/9028/05	104C (220F) Fusible Link
412169	10/9038/06	127C (260F) Fusible Link
412161	10/9028/08	143C (290F) Fusible Link
412162	10/9028/10	180C (356F) Fusible Link
412165	10/9004/01	Single Phase Mercury Switch S.P.D.T.
412166	10/9002/01	Three Phase Mercury Switch S.P.D.T

*** Products highlighted in red are stocked centrally for fast delivery**



BK Gas Meter

Domestic BK Diaphragm Gas Meter (2 pipe connections)

Order Code	Meter Connection	Centre to Centre distance	Measuring Flow Range	Max W.P.	Model	Old Reference
497877	3/4" BSP swivel	110mm	0.04 to 6.0 m ³ /hr	500 mbar	BK-G4(110)	U6
497879	1" BSP swivel	250mm	0.06 to 10 m ³ /hr	500 mbar	BK-G6	U10

Commercial BK Diaphragm Gas Meter (2 pipe connections)

Order Code	Meter Connection	Centre to Centre distance	Measuring Flow Range	Max W.P.	Model	Old Reference
497881	1.1/4" BSP swivel	152mm	0.10 to 16 m ³ /hr	500 mbar	BK-G10	U16
497883	2" BSP swivel	250mm	0.16 to 25 m ³ /hr	500 mbar	BK-G16	U25
497884	2" BSP swivel	280mm	0.25 to 40 m ³ /hr	500 mbar	BK-G25	U40
497885	65mm Flg	335mm	0.40 to 65 m ³ /hr	500 mbar	BK-G40	U65
487617	80mm Flg	430mm	0.65 to 100 m ³ /hr	500 mbar	BK-G65	U100

Both the Domestic & Commercial BK Diaphragm meters can be retro fitted with a Low Frequency pulse unit (IN-Z61)

497886 IN-Z61 Pulse Unit with Plug and Cable to fit all BK Diaphragm meters



Oil Meter

Elster Oil & Water Meters

WOLSELEY Cat No	Elster Product No	Description (Kent replaces ABB) Oil Meters	Elster Short Code
488100	FC4S1	KENT 4MM OIL METER	
488101	FC4P8	KENT 4MM OIL METER PULSED	
488102	FC8S1	KENT 8MM OIL METER	
488104	FB15S1BA	KENT 15MM OIL METER with connections	
488105	FB15P2BA	KENT 15MM OIL METER PULSED with connections	
488106	FB20S1CA	KENT 20MM OIL METER with connections	
488107	FB20P2CA	KENT 20MM OIL METER PULSED with connections	
488108	FB25S1DA	KENT 25MM OIL METER with connections	
488109	FB25P2DA	KENT 25MM OIL METER PULSED with connections	
488110	FA40S1	KENT 40MM OIL METER flanged NP16	
488111	FA40P3	KENT 40MM OIL METER PULSED flanged NP16	
488112	FA50S1	KENT 50MM OIL METER flanged NP16	
488113	FA50P3	KENT 50MM OIL METER PULSED flanged NP16	
448110	2290M9091	KENT 4mm (FC4) ANGLE BANJO CONNECTION	
448111	2290M9090	KENT 8mm (FC8)_ANGLE BANJO CONNECTION	

Cat No

Volumetric Meters V100 (inline)

488064	V100C015M134BXTNMBB	KENT V100 15 MM (PSMT)WATER METER PULSED	S-201
488065	V100C025M165CXTNMCB	KENT V100 20MM (PSMT) WATER METER PULSED	S-202
488066	V100C035M199DXTNMDB	KENT V100 25MM (PSMT) WATER METER PULSED	S-203
488067	V100C060M260EXTNMEB	KENT V100 30MM (PSMT) WATER METER PULSED	S-204
488068	V100C100M300GXTNMFb	KENT V100 40MM (PSMT) WATER METER PULSED	S-205



V110 Cold Water Meter



Multical 401

KAMSTRUP MULTICAL® 401 HEAT METERS

Heat meter with integrated ultrasonic flow part with 1.5 m signal cable, standard optical data output, incl. power supply, a set of short direct or pocket sensors with 1.5 m cable and 2 nipples or 2 stainless steel pockets (65mm or 90mm):

Order Code	Model No		Description	Pipe Size
365900	66-Wx-xx1-xxx	Multical 401	qp 0.6 m³/h, 110 mm X G¾B (R½), PN 16	½ inch threaded *
365901	66-Wx-xx4-xxx	Multical 401	qp 1.5 m³/h, 110 mm X G¾B (R½), PN 16	½ inch threaded *
365902	66-Wx-xx5-xxx	Multical 401	qp 1.5 m³/h, 165 mm X G¾B (R½), PN 16	½ inch threaded *
365903	66-Wx-xx7-xxx	Multical 401	qp 1.5 m³/h, 130 mm X G1B (R¾), PN 16	¾ inch threaded*
365904	66-Wx-xx9-xxx	Multical 401	qp 1.5 m³/h, 190 mm X G1B (R¾), PN 16	¾ inch threaded*
365905	66-Wx-xxA-xxx	Multical 401	qp 3.0 m³/h, 130 mm X G1B (R¾), PN 16	¾ inch threaded*
365906	66-Wx-xxB-xxx	Multical 401	qp 3.0 m³/h, 190 mm X G1B (R¾), PN 16	¾ inch threaded*
365907	66-Wx-xxD-xxx	Multical 401	qp 3.5 m³/h, 260 mm X G1¼B (R1), PN 16	1 inch threaded*
365908	66-Wx-xxF-xxx	Multical 401	qp 6.0 m³/h, 260 mm X G1¼B (R1), PN 16	2 inch threaded*
365909	66-Wx-xxG-xxx	Multical 401	qp 6.0 m³/h, 260 mm X DN25, PN 25	25 mm flanged
365910	66-Wx-xxH-xxx	Multical 401	qp 10.0 m³/h, 300 mm X G2B (R1½), PN 16	1½ inch threaded*
365911	66-Wx-xxJ-xxx	Multical 401	qp 10.0 m³/h, 300 mm X DN40, PN 25	40 mm flanged
365912	66-Wx-xxK-xxx	Multical 401	qp 15.0 m³/h, 270 mm X DN50, PN 25	50 mm flanged



2WR5F Heat Meter

parts arena^o

Find and order your spare parts quickly and efficiently by utilising line drawings of components for easy identification and purchase



Finding the right part to order is easier than you thought!

Parts Arena allows you to find and order your spare parts quickly and efficiently by utilising line drawings of components for easy identification and purchase.

Drop in to your local Heat Merchants or log on to
www.heatmerchants.ie



S250 Timeswitch



Q550 Timeswitch



E850 Quartz Master

SANGAMO ROUND PATTERN TIMSWITCHES

S250 & Q550 24 Hour Dial 2 On/Off 20 Amp SPST Timeswitches

Cat No	Model No	Motor	Reserve	Pins	Features
333001	S254 2	Quartz	None	3	Day omit of On operation
333004	S255 2	Quartz	None	4	Day omit of On operation
333290	Q554 2	Quartz	100 hours	3	Day omit of On operation
333291	Q555 2	Quartz	100 hours	4	Day omit of On operation
333292	Q557 2	Quartz	100 hours	4	Day omit of Off operation
333294	Q559 2	Quartz	100 hours	4	Day omit of On operation, Early Off 1 day/week
333295	Q563 2	Quartz	100 hours	4	C/O of Circuits, 10A/20A changeover
333297	Q586 2	Quartz	100 hours	4	Day omit of On operation, Early On 1 day/week
333050	FD 930	Conduit Entry Box for S250, Q550 and E850 Models			

SANGAMO ROUND PATTERN TIMSWITCHES

E850 Electronic 7 Day 20 Amp Single Channel Timeswitches

Cat No	Model No	Motor	Reserve	Pins	Features
333315	E 854	48 On/Off	50 days	3	1 x 20A SPST : 2 hr override ON
333316	E 855	48 On/Off	50 days	4	2 x 20A SPST : 2 hr override ON
333317	E 863	48 On/Off	50 days	4	3 x 20A SPST : 2 hr override ON

SANGAMO DIN & PANEL : 16 Amp SPCO

Din Rail, Surface or Panel Mounting : Flexible Programming + permanent On/Off Switch + Programmable override from 1 Hour to 27 Days

Cat No	Model	Dial	Switchings	Channel	Features
333106	23302	24Hr + 24Hr	Upto 140	2	25,000 Hr Reserve
333108	23802	2 x 7 Day	140 On/Off	2	200 = 3 Modules Wide
Din Rail Mounting : Flexible Programming + permanent On/Off Switch Temporary exemption only					
333298	23141	7 Day Single channel	Up to 56	1	5 year battery reserve
333299	23142	7 Day Two channel	Up to 56	2	5 year battery reserve

SANGAMO DIN & PANEL : 16 Amp SPCO

72 x 72mm casing. 8 Amp volt free changeover. Suitable for DIN, surface or Panel Mounting. Manual override On/Off

Cat No	Model	Dial	Switchings	Channel	Features
333131	23671	7 Day	Up to 140	1	25,000 Hr Reserve
333134	95583	BR6 Panel Mounting kit with screws			
	95588	BR7 Panel Mounting kit with screws			

SANGAMO DIN & PANEL : 16 Amp SPCO

72 x 72mm casing. 16 Amp volt free changeover. Suitable for DIN, surface or Panel Mounting. 16401 only has a clockwise setting

Cat No	Model	Dial	Switchings	Channel	Features
333301	16622	24 Hour	Up to 72	1	Without battery reserve
333303	16921	7 Day	Up to 84	1	200hr battery reserve
333304	16922	7 Day	Upto 84	1	Without battery reserve
333302	16621	24 Hour	Upto 72	1	200hr battery reserve

SANGAMO POWER SAVER

Cat No	Model	
333382	PS24/7	SAN PS24/7 POWER SAVER TIMER SWITCH 24HR
333383	143609	SAN 143609 POWER SAVER SURFACE MOUNT BOX

Magnehelic Gauge



Magnehelic Gauge



2000 Magnehelic

Measures low air or compatible gas pressures - positive, negative or differential.

The frictionless movement assures 2% accuracy on most ranges • 4.1/2" diameter case for flush, surface or panel mounting.

Duplicate 1/8" NPT(F) connections for side or back entry • c/w plugs for duplicate taps, brass adaptors for plastic tubing.

Please Note: The ranges below represent scales that are available from stock. Other ranges to suit your specific requirements are obtainable to special order.

DWYER MAGNEHELIC GAUGES					
Imperial Scales			S.I. Unit Scale		
Cat No	Model No	Range in "WC	Cat No	Model No	Pa Range
655440	2000-00	0 - 0.25	655335	2000-60 Pa	0 - 60
655448	2000-0	0 - 0.50	655336	2000-100 Pa	0 - 100
655441	2001	0 - 1.0	655337	2000-125 Pa	0 - 125
655442	2002	0 - 2.0	655338	2000-250 Pa	0 - 250
655443	2003	0 - 3.0	655339	2000-500 Pa	0 - 500
655449	2004	0 - 4.0	655340	2000-750 Pa	0 - 750
655444	2005	0 - 5.0	655341	2000-1 kPa	0 - 1 kPa
	2006	0 - 6.0	655342		
655451	2008	0 - 8.0	655343	2000-1.5 kPa	0 - 1.5
655445	2010	0 - 10	655344	2000-2 kPa	0 - 2.0
655452	2015	0 - 15	655345	2000-3 kPa	0 - 3.0
655462	2020	0 - 20	655346	2000-4 kPa	0 - 4.0
655446	2030	0 - 30	655333	2000-5 kPa	0 - 5.0
655454	2025	0 - 25	655332	2000-8 kPa	0 - 8.0
655447	2040	0 - 40	655363	2000-10 kPa	0 - 10
	2050	0 - 50	655347		
	2060	0 - 60	655459		
	2080	0 - 80	655208		
	2100	0 - 100	655348		

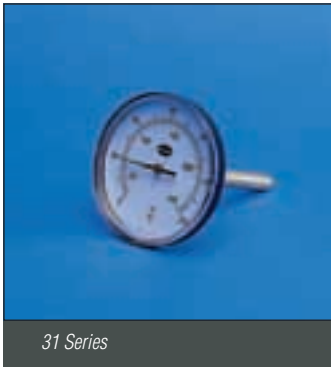
MAGNEHELIC SERIES 2000 GAUGES			
Cat No	Cat No	Range	Minor Divisions
655334	2000-00N	Range = 0.05 to 0 to 0.20" WG	Clean Room Applications
655219	2300-0	Range= 0.25 to 0 to 0.25"wg	0.01"WG
655210	2301	Range= 0.5 to 0 to 0.5"wg	0.02"WG
655212	2302	Range= 1.0 to 0 to 1.0"wg	0.05"WG
655214	2310	Range = 5.0 to 0 to 5.0" WG	0.1"WG
655215	2320	Range = 10.0 to 0 to 10.0" WG	0.2"WG
655217	2330	Range = 15.0 to 0 to 15.0" WG	0.5"WG
655221	2300-10cm	Range = 5 to 0 to 5cm WG	1.0cm WG
655398	2300-60 Pa-N	Range = -10 to 0 to +50Pa	Clean Room Applications
655426	2300-60 Pa	Range = 30 to 0 to 30 Pa	2.0Pa
655427	2300-120 Pa	Range = 60 to 0 to 60 Pa	2.0Pa
655428	2300-250 Pa	Range = 125 to 0 to 125 Pa	5.0Pa
655429	2300-500 Pa	Range = 250 to 0 to 250 Pa	5.0Pa



A432 Carrying Case

MAGNEHELIC ACCESSORY KITS		
Cat No		
655392	A605	Air Filter Kit - adapts a Magnehelic for use as an air filter gauge
655393	A432	Portable accessory package includes plastic carrying case,
655394	A610	Vertical or horizontal mounting of Magnehelic on a Pipe Kit

Magnehelic Gauges are also available scaled in PSI - Please note that above 10PSI the Medium Pressure (MP) standard applies rated to 35PSI static pressure.



31 Series

BRANNAN BI-METAL THERMOMETERS

Direct Mounting Horizontal Thermometers Black Case

Cat No	Model No	Dial Size	Range oC	Range oF	Length
324450	31/421/0	66mm	0 to 120	32 to 250	50mm
324460	31/441/0	66mm	0 to 120	32 to 250	100mm
324461	31/461/0	66mm	0 to 120	32 to 250	150mm
324457	31/621/0	100mm	0 to 120	32 to 250	50mm
324459	31/624/0	100mm	-20 to +60	0 to 140	50mm
324453	31/641/0	100mm	0 to 120	32 to 250	100mm
324451	31/644/0	100mm	-20 to +60	0 to 140	100mm
324462	31/661/0	100mm	0 to 120	32 to 250	150mm
324463	31/921/0	150mm	0 to 120	32 to 250	50mm
324455	31/941/0	150mm	0 to 120	32 to 250	100mm
324456	31/961/0	150mm	0 to 120	32 to 250	150mm

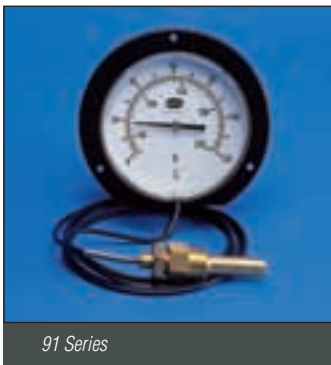


32 Series

BRANNAN BI-METAL THERMOMETERS

Direct Mounting Vertical Thermometers Black Case

Cat No	Model No	Dial Size	Range oC	Range oF	Length
324470	32/421/0	66mm	0 to 120	32 to 250	50mm
324464	32/621/0	100mm	0 to 120	32 to 250	50mm
324468	32/624/0	100mm	-20 to +60	0 to 140	50mm
324454	32/641/0	100mm	0 to 120	32 to 250	100mm
324467	32/644/0	100mm	-20 to +60	0 to 140	100mm
324465	32/661/0	100mm	0 to 120	32 to 250	150mm



91 Series

BRANNAN BI-METAL THERMOMETERS

Remote Reading Capillary Thermometers – Black Case

Cat No	Model No	Dial Size	Range oC	Range oF	Length
324611	91/624/0	100mm	-20 to +60	0 to 140	1.5M Cap
324612	91/626/0	100mm	0 to 120	32 to 250	1.5M Cap
324613	91/631/6	100mm	-40 to +40	-40 to +100	3.0M Cap
324808	91/651/6	100mm	-40 to +40	-40 to +100	5.0M Cap
324614	91/634/0	100mm	-20 to +60	0 to 140	3.0M Cap
324615	91/636/0	100mm	0 to 120	32 to 250	3.0M Cap
324616	91/638/0	100mm	0 to 250	32 to 480	3.0M Cap
324617	91/656/0	100mm	0 to 120	32 to 250	5.0M Cap



90 Series

BRANNAN BI-METAL THERMOMETERS

Stainless Steel Filled System Thermometers

Cat No	Model No	Dial Size	Range oC	Range oF	Length
324691	90/131/6	100mm	0 to 160	Back Entry	100mm
324695	90/140/6	100mm	0 to 120	Bottom Entry	100mm
324692	90/133/6	100mm	-20 to +60	Back Entry	100mm
324702	90/163/6	100mm	-20 to +60	3.0M Cap	100mm
324707	90/173/6	100mm	-20 to +60	5.0M Cap	100mm
324520	39/107/0	100mm Mild Steel pocket for the above			
324521	39/117/0	100mm Stainless Steel pocket for the above			
324522	39/127/0	100mm Brass pocket for the above			

KANE 455 Boiler Analyser

As the KANE425 but with the following upgrades...

- Long life infra-red sensor measures CO₂ direct
- Long life CO sensor
- Lower annual service costs because both sensors have 5 years expected life
- Supplied with rechargeable batteries and charger as standard

Options include

- Plug-in gas leak detector
- Bluetooth™ module and software
- A range of combustion probes and temperature probes
- Standard, Pro and Oil kits available



KANE455

KANE455 KIT

KANE455 PRO KIT

KANE455 OIL KIT

Available at

**HEAT
MERCHANTS**

NEW

Hand Held Multi-Gas Emissions Analyser

KANE900 PLUS

it's easy with Kane



900 PLUS

O₂
CO
CO₂
NO
NO_x
SO₂

GAS ANALYSERS

Measures

- Oxygen to 21%
- Carbon Monoxide (CO) to 10,000ppm with hydrogen compensated sensor (alternatively CO to 100,000ppm with high range sensor)
- Nitric Oxide (NO) to 5000ppm with calculated NO_x (alternatively NO to 100ppm with better low range accuracy)
- Sulphur Dioxide (SO₂) to 5000ppm
- (Alternatively any toxic sensor can be replaced with a 1000ppm Nitrogen Dioxide (NO₂) sensor)
- Inlet Temperature
- Flue Gas Temperature
- Differential pressure

Features

- Big character display
- IR printer link... printed header can be customised
- Large memory to store results for easy transfer to PC
- Long life battery recharged in situ

Options

- High range CO sensor instead of standard CO sensor
- Low range NO sensor in place of standard NO sensor
- NO₂ sensor in place of any other toxic gas sensor
- SO₂ sensor in place of any other toxic gas sensor

Optional Extras

- KMIRP infra-red thermal paper printer
- KANE ImPrint infra-red plain paper printer



Hand Held Multi-Gas Emissions Analyser

KANE900 PLUS

it's easy with Kane



900 PLUS

O₂
CO
CO₂
NO
NO_x
SO₂

GAS ANALYSERS

Measures

- Oxygen to 21%
- Carbon Monoxide (CO) to 10,000ppm with hydrogen compensated sensor (alternatively CO to 100,000ppm with high range sensor)
- Nitric Oxide (NO) to 5000ppm with calculated NO_x (alternatively NO to 100ppm with better low range accuracy)
- Sulphur Dioxide (SO₂) to 5000ppm
- (Alternatively any toxic sensor can be replaced with a 1000ppm Nitrogen Dioxide (NO₂) sensor)
- Inlet Temperature
- Flue Gas Temperature
- Differential pressure

Features

- Big character display
- IR printer link... printed header can be customised
- Large memory to store results for easy transfer to PC
- Long life battery recharged in situ

Options

- High range CO sensor instead of standard CO sensor
- Low range NO sensor in place of standard NO sensor
- NO₂ sensor in place of any other toxic gas sensor
- SO₂ sensor in place of any other toxic gas sensor

Optional Extras

- KMIRP infra-red thermal paper printer
- KANE ImPrint infra-red plain paper printer



HEAT MERCHANTS Branches Nationwide

ARKLOW Unit 4 Portview Knockenrahan Ind Est Arklow Co Wicklow Ph: 0402 29020	Co Cork Ph: 021 4355607 CORK - SKIBBEREEN Curragh Comercial Park Skibbereen Co Cork Ph: 028 51859	Cullens Cottages Deansgrange Road Dublin 18 Ph: 01 2070060 DUBLIN - FINGLAS Unit 33-34 Finglas Business Park Tolka Valley Road Dublin 11 Ph: 01 8110081	DUNGARVAN Unit 3A Dungarvan Business Park Dungarvan Co Waterford Ph: 058 48244 ENNIS Unit 2 Block F Quin Road Business Park Quin Road Ennis Co Clare Ph: 065 6844922	Ph: 044 9339098 NAAS Toughers Business Park Newhall Naas Co Kildare Ph: 045 486843 NAVAN Old Dublin Road Navan Co Meath Ph: 046 9072900
ATHLONE Unit 2 Moydrum Road Athlone Co Westmeath Ph: 090 6491056	CORK - TOGHER c/o Brooks Pouladuff Industrial Estate Togher Co Cork Ph: 021 4971192	DUBLIN - FONTHILL Unit B Fonthill Industrial Estate Fonthill Road Dublin 22 Ph: 01 6304306	GALWAY Unit 50 Briarhill Business Park Ballybrit Co Galway Ph: 091 705150	NENAGH Unit 22 Stereame Centre Limerick Road Nenagh Co Tipperary Ph: 067 50660
BALLINA c/o Brooks Crossmolina Road Ballina Co Mayo Ph: 096 71919	CORK - TURNERS CROSS Unit 5 Curragh Road Turners Cross Co Cork Ph: 021 4968134	DUBLIN - RIALTO Unit 8 Glenview Industrial Estate Rialto Dublin 12 Ph: 01 4541900/09	KILKENNY Dublin Road Kilkenny Ph: 056 7762244	PORLAOISE Unit 4 Clonminan Industrial Estate Portlaoise Co Laois Ph: 057 866511
BRAY Unit 34 Beechwood Close Boghall Road Bray Co Wicklow Ph: 01 2116180	DROGHEDA Unit 17 Donore Industrial Estate Donore Road Drogheda Co Louth Ph: 041 9836403	DUBLIN - SANDYFORD c/o Brooks 60 Heather Road Sandyford Industrial Estate Dublin 18 Ph: 01 2136481	KILLARNEY Unit 4A Tiernaboul Industrial Estate Killarney Co Kerry Ph: 064 25034	SLIGO Duck Park Co Sligo Ph: 071 9162133
CARLOW Unit 1A O'Brien Road Carlow Ph: 059 9137374	DUBLIN - BALBRIGGAN c/o Brooks, Unit BC5, M1 Business Park Courtough Balbriggan Co Dublin Ph: 01 6905151	DUBLIN - SWORDS Turvey Business Park Donabate Swords Co Dublin Ph: 01 8950000	LETTERKENNY Unit 5-6 Rossview Business Park Port Road Letterkenny Co Donegal Ph: 074 9188377	TRALEE Clash Industrial Estate Tralee Co Kerry Ph: 066 7180600
CLONMEL Carrigeen Powerstown Clonmel Co Tipperary Ph: 052 6182102	DUBLIN - BALDOYLE Unit 131 Baldoyle Industrial Estate Baldoyle Dublin 13 Ph: 01 8399001	DUBLIN - TALLAGHT Unit 4 Hibernian Industrial Estate Greenhills Road Tallaght Dublin 24 Ph: 01 4585060	LIMERICK - BALLYSIMON c/o Brooks Tipperary Road Ballysimon Co Limerick Ph: 061 410011	WATERFORD Unit 2 Carriganard Six Crossroads Co Waterford Ph: 051 334606
CORK - BALLINCOLLIG Unit 5 Link Road Business Park Ballincollig Co Cork Ph: 021 4875530	DUBLIN - BLUEBELL c/o Brooks Bluebell Naas Road Dublin 12 Ph: 01 4190099	DUNDALK Finnabair Industrial Estate Dundalk Co Louth Ph: 042 9334845	LIMERICK - ROXBORO Roxboro Co Limerick Ph: 061 311206	WEXFORD Kerlogue Business Park Rosslare Road Co Wexford Ph: 053 9142136
CORK - BLACKPOOL Unit 4 Northpoint Business Park Blackpool Co Cork Ph: 021 4211120	DUBLIN - DEANSGRANGE Ground Floor Block 2		MULLINGAR Unit 16 Clonmore Road Bus Park Clonmore Road Mullingar Co Westmeath	
CORK - LITTLE ISLAND Unit 18D Euro Bus Park, Courtown Little Island				



HEAT MERCHANTS

Whilst every care has been taken to ensure that the information included in this document was accurate at the time of printing, we reserve the right to change specifications at any time. The photographs reproduced in this publication are within the constraints of the printing process and are NOT to be used for matching purposes. E&OE.